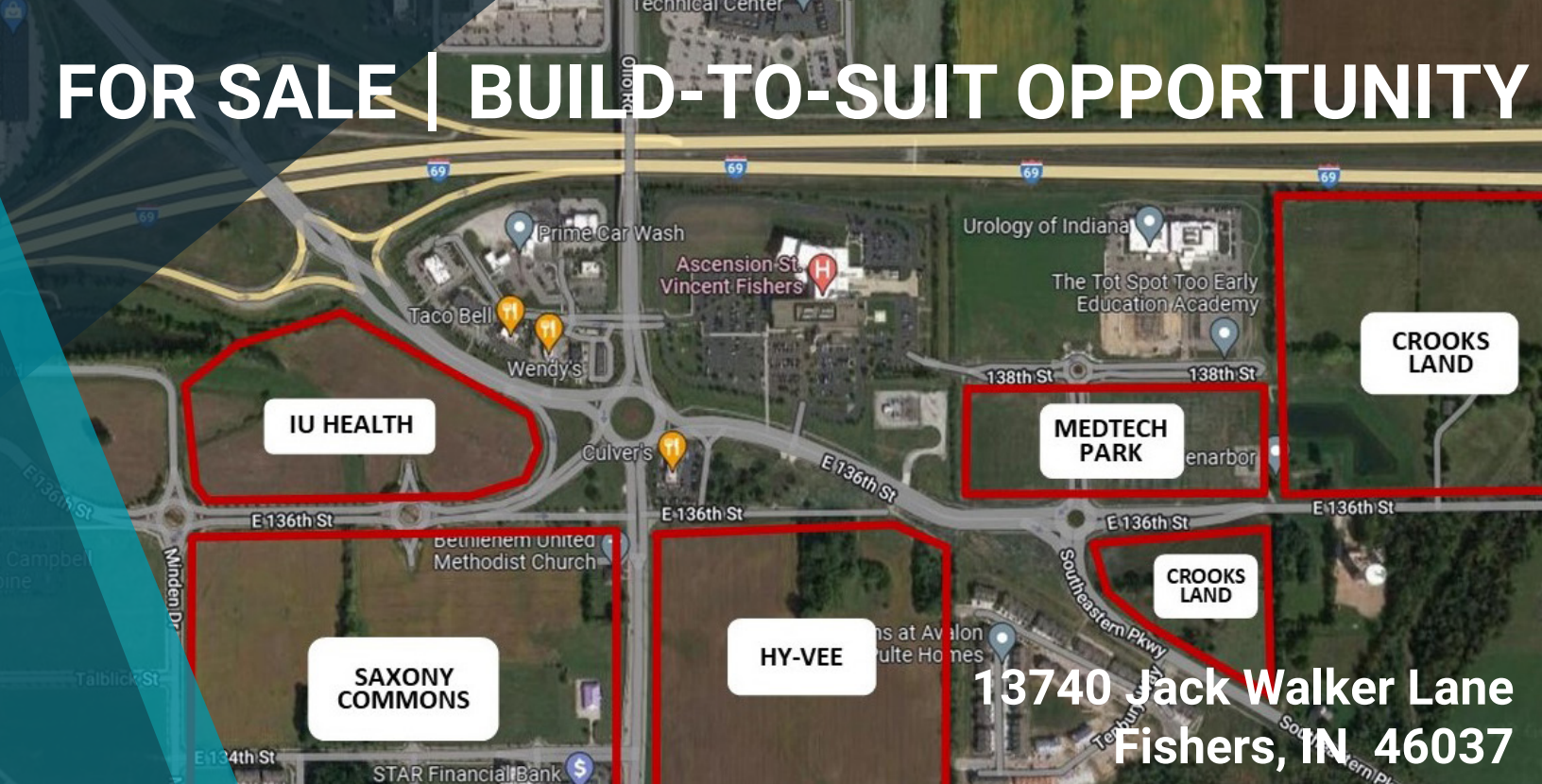


FOR SALE | BUILD-TO-SUIT OPPORTUNITY



**13740 Jack Walker Lane
Fishers, IN 46037**

PROPERTY DETAILS



- Premier Medical & Commercial Development
 - Pad Ready Site Available - 1.76 acres
- Price/AC: \$550,000
 - Includes site infrastructure, grading, utilities and portion of the shared access road
- Shared road currently under construction for access via Jack Walker Ln and 138th Street
- Two MOB's slated for construction to the South of the available parcel
- Zoning: Medtech Park PUD (medical uses preferred by city of Fishers)
- Shared access and parking for all three sites
- Surrounded by major healthcare providers



CONTACT

Bill McClamroch
Associate, Brokerage
317.919.2992
bmccclamroch@cciiin.com

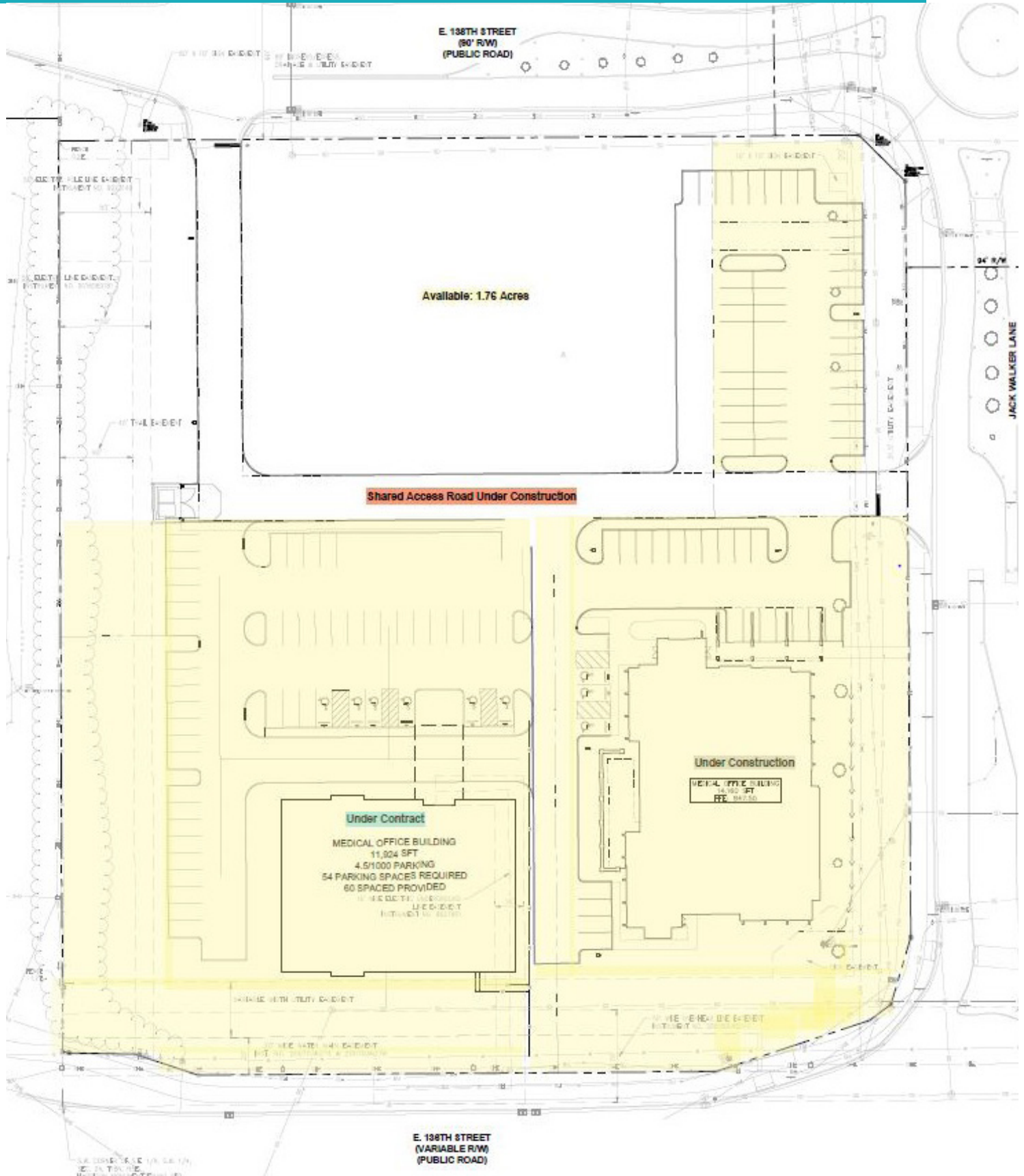
HQ: Cornerstone Companies, Inc.
8902 N Meridian Street, Suite 205
Indianapolis, IN | 317.841.9900
cornerstonecompaniesinc.com

LAND PLAN

13740 Jack Walker Lane
Fishers, IN 46037



Land Available | 1.76 Acres





CORNERSTONE

**Build to Suit
Opportunity
MedTech Park**

BILL MCCLAMROCH
317-919-2992
CornerstoneCompaniesInc.com



CORNERSTONE

**LAND
FOR SALE
MedTech Park**

BILL MCCLAMROCH
317-919-2992
CornerstoneCompaniesInc.com

13740 JACK WALKER LN.

DEMOGRAPHICS (3 - mile radius)



103,175
Population



33.7
Median Age



34,875
Households



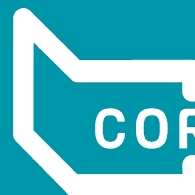
113,501
Median
Household
Income



\$89,335
Average
Household
Income



CORNERSTONE



CORNERSTONE



CONTACT

Bill McClamroch
Associate, Brokerage
317.919.2992
bcclamroch@cciin.com

Cornerstone Companies, Inc.
8902 N Meridian Street, Suite 205
Indianapolis, IN 46260