

FOR LEASE

1 E County Line Rd
Sandwich, IL 60548



PROPERTY DETAILS



- Prime 19,459 SF medical office building
- 16,622 sf available for lease
- 2nd gen medical space with plumbing throughout
- Less than 2 miles from Northwestern Medicine Valley West Hospital and approximately 22 miles from Rush Copley Medical Center
- Convenient access to US 34
- Ample parking
- Monument signage opportunities



CONTACT

Charles Yeo
Senior Vice President
317.358.7021
cyeo@cciin.com

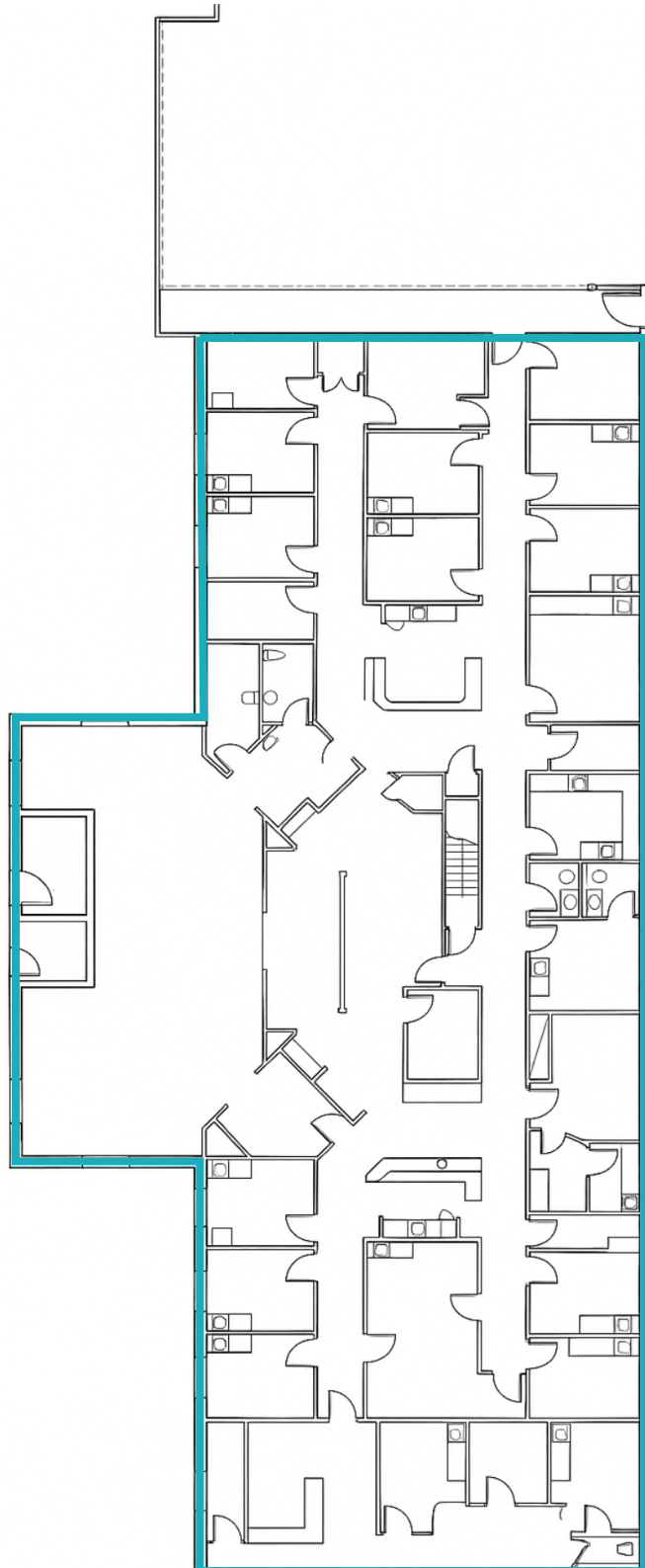
HQ: Cornerstone Companies, Inc.
8902 N Meridian Street, Suite 205
Indianapolis, IN | 317.841.9900
cornerstonecompaniesinc.com

FLOOR PLAN

1 East County Rd
Sandwich, IL 60548



1st Floor

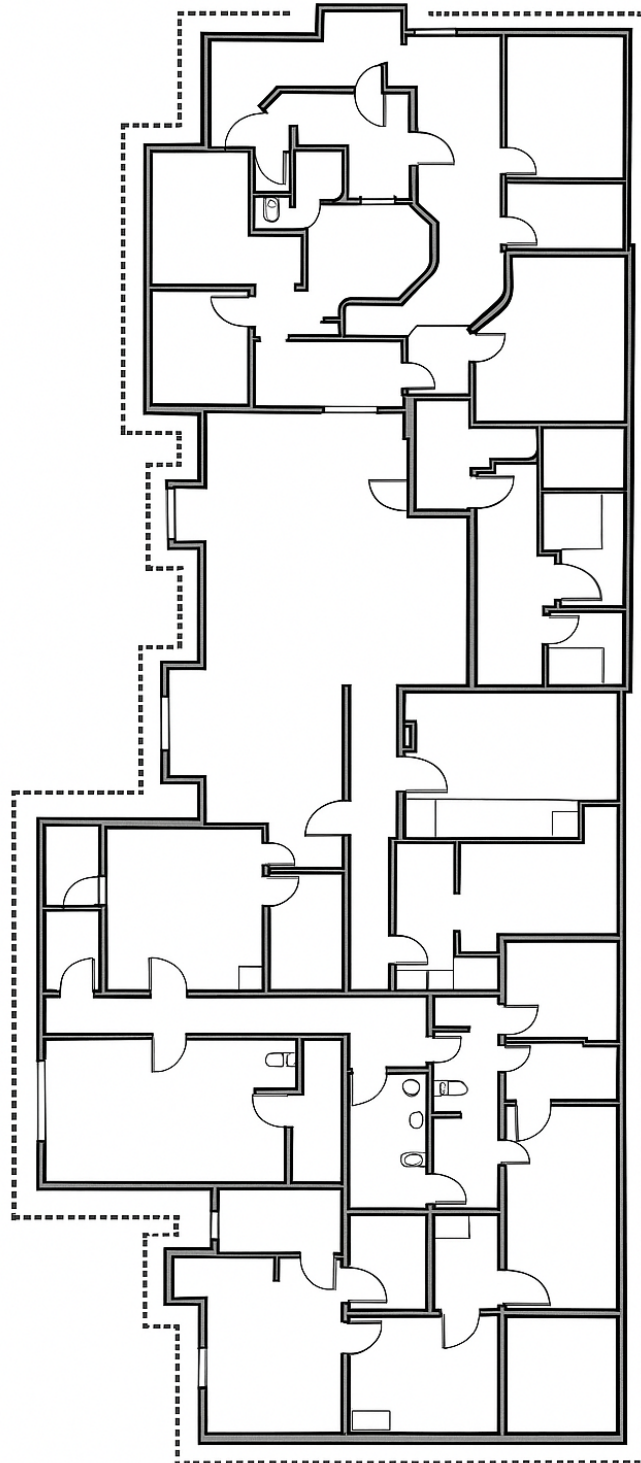


FLOOR PLAN

1 East County Rd
Sandwich, IL 60548



Lower Level





1 E COUNTY LINE RD

DEMOGRAPHICS (3 - mile radius)



12,837
Population



42.60
Median Age



4,973
Households



\$80,350
Median
Household
Income



CONTACT

Charles Yeo
Senior Vice President
317.358.7021
CYeo@cciin.com



CORNERSTONE

Cornerstone Companies, Inc.
8902 N Meridian Street, Suite 205
Indianapolis, IN 46260