

MEDICAL OFFICE FOR SALE

5645 Lafayette Rd, Indianapolis, IN



PROPERTY HIGHLIGHTS

- +/-8,200 SF single-story medical office building for sale
- Leased to long-term medical tenant
- Built in 1994
- Located on the northwest side of Indianapolis, approximately 9 miles from Downtown Indianapolis
- Easy access to I-465 & I-65
- Densely populated area with a population of approximately 174,000 within a 5-mile radius
- Monument signage
- Excellent visibility to over 31,366 vehicles per day (W 56th Street & I-65)



**5645 Lafayette Rd.
Indianapolis, IN 46254**



CONTACT

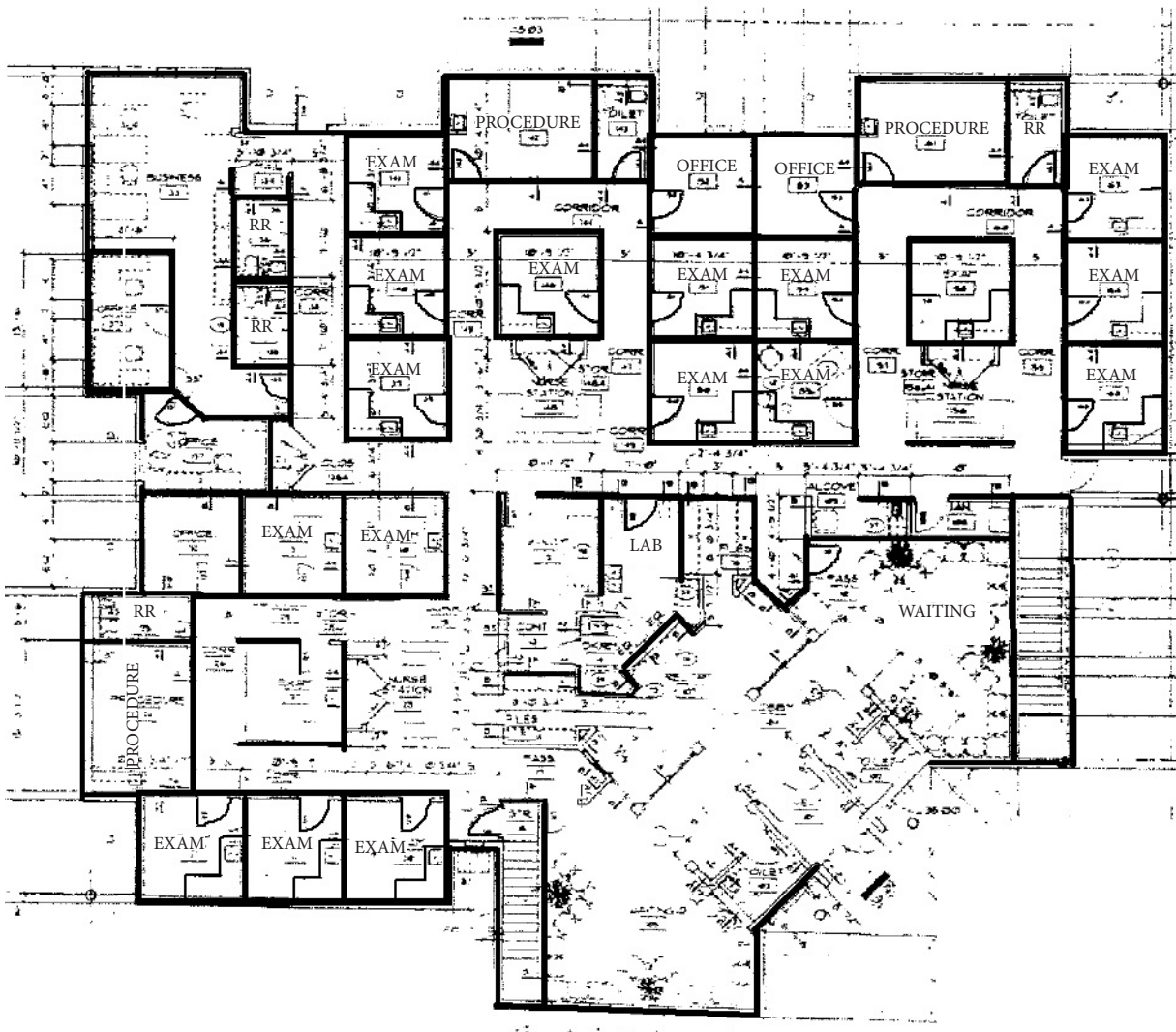
Ben Cohen, MBA
VP, Brokerage
317.754.6245
bcohen@cciin.com

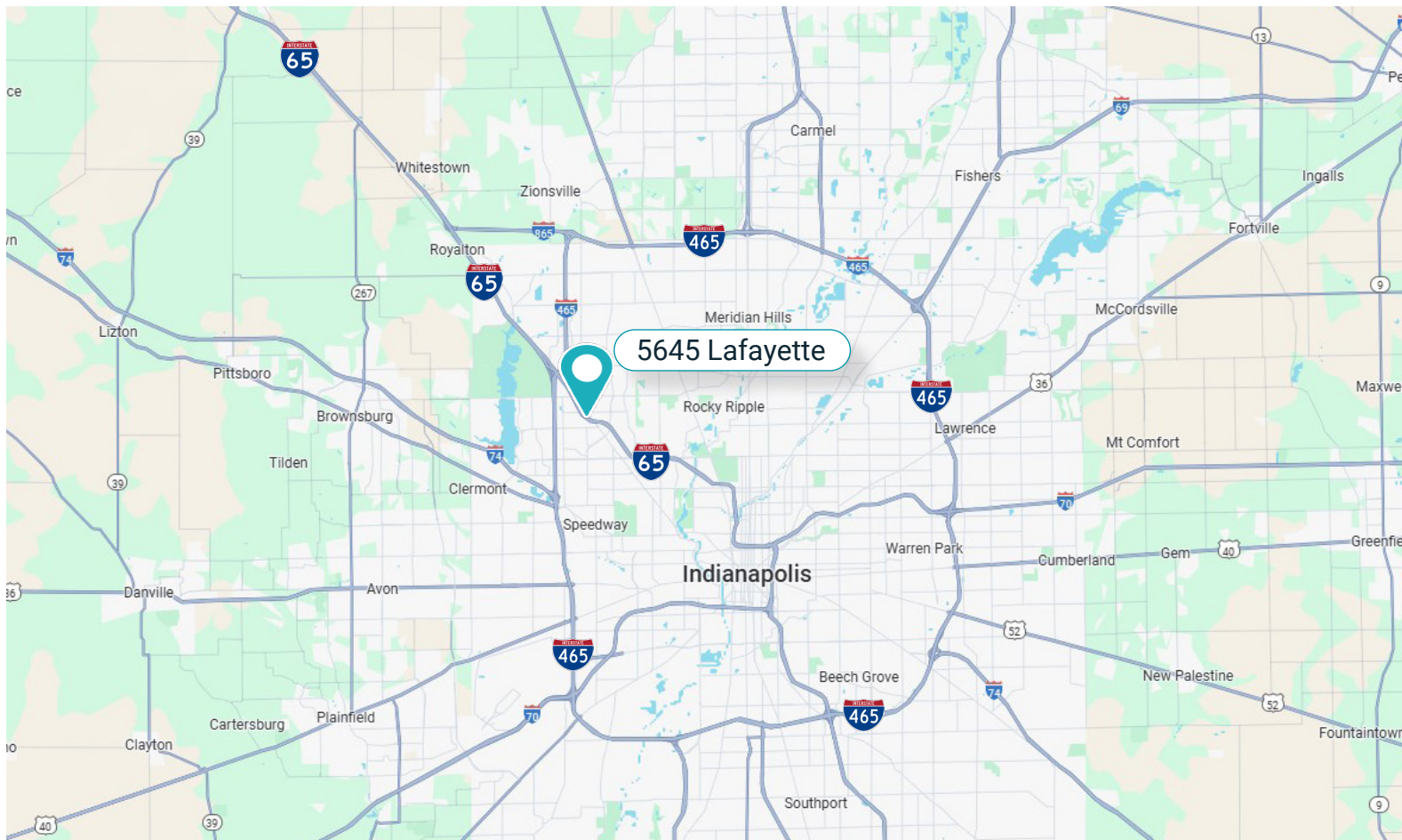
Cornerstone Companies, Inc.
8902 N Meridian Street, Suite 205
Indianapolis, IN, 46260

FLOOR PLAN



+/- 8,200 SF MEDICAL OFFICE





DEMOGRAPHICS

*5 - mile radius



173,965
Population



35
Median Age



69,504
Households



\$77,614
Average
Household
Income



CONTACT

Ben Cohen, MBA
VP, Brokerage
317.754.6245
bcohen@cciin.com

EAGLE CREEK
URGENT CARE
Cornerstone Companies, Inc.
8902 N Meridian Street, Suite 205
Indianapolis, IN, 46260



© 2024 Cornerstone Companies, Inc. All rights reserved. Although the information contained herein has been obtained from sources deemed reliable, Owner, Cornerstone Companies, Inc., and/or their representatives, brokers or agents make no representation or warranty as to its accuracy or completeness. Any reliance on this information is solely at your own risk.