

# FOR LEASE

11355 97<sup>th</sup> Ln.  
St. John, IN 46373



## PROPERTY DETAILS



- Single-story, Medical Office Building
- 10,104 For Lease
- Covered Portico Drive
- Scenic Landscaping with Mature Trees
- Convenient Nearby Amenities
- Ample Parking in a Surface Lot



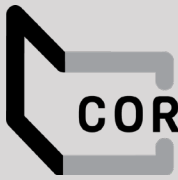
## CONTACT

**Charles J. Yeo, CCIM, CPM**  
Senior Vice President, Brokerage  
317.288.9006  
CYeo@cciin.com

HQ: Cornerstone Companies, Inc.  
8902 N Meridian Street, Suite 205  
Indianapolis, IN | 317.841.9900  
cornerstonecompaniesinc.com



CORNERSTONE



**CORNERSTONE**

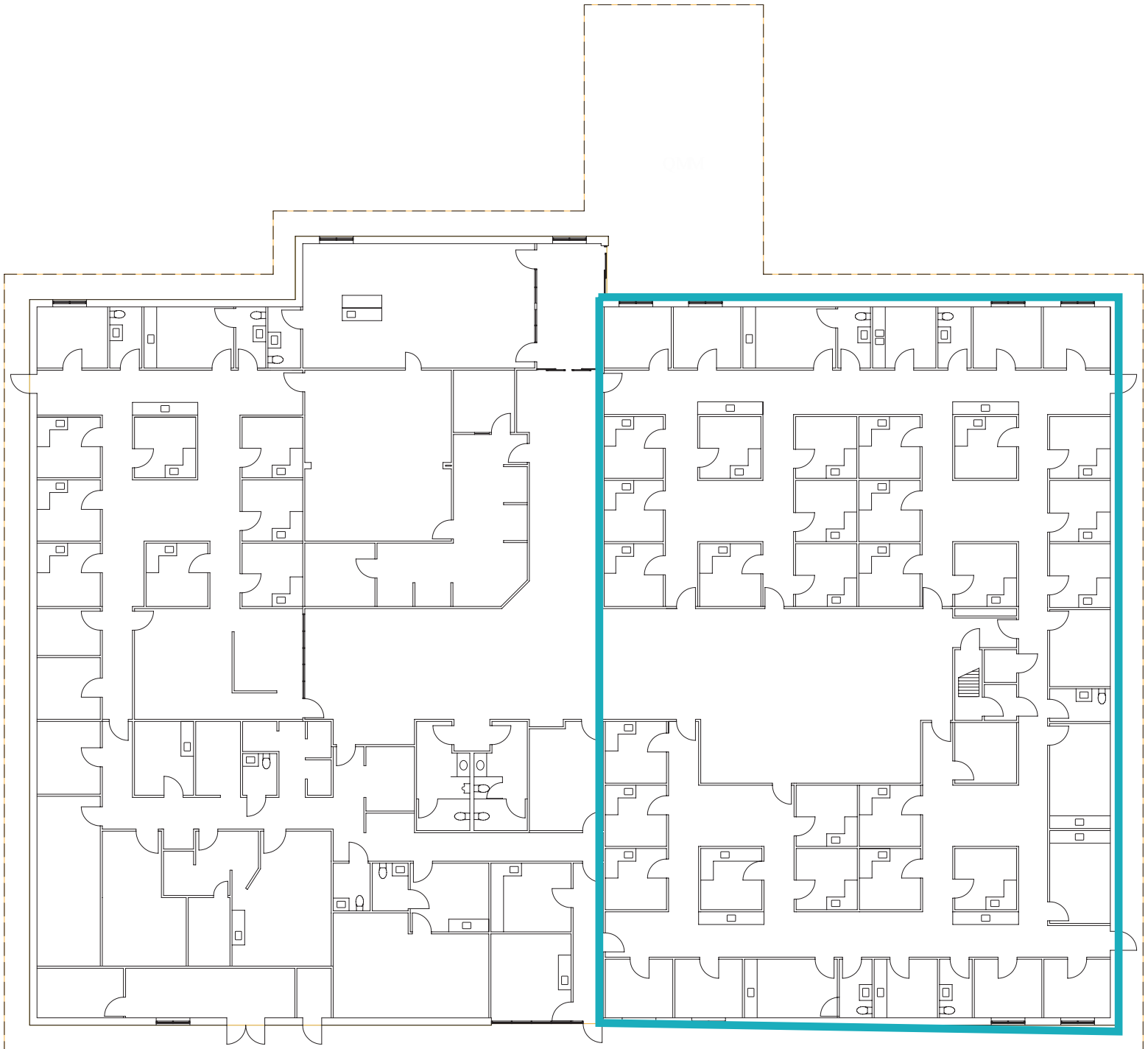
# FLOOR PLAN

11355 97th Ln.

St. John, IN 46373



**10,104 RSF**







CORNERSTONE



11355 97<sup>TH</sup> LN.

## DEMOGRAPHICS (5 - mile radius)



82,517

Population



43.8

Median Age



31,331

Households



\$113,321

Average Household Income



## CONTACT

**Charles J. Yeo, CCIM, CPM**  
Senior Vice President, Brokerage  
317.288.9006  
[CYeo@cciin.com](mailto:CYeo@cciin.com)

Cornerstone Companies, Inc.  
8902 N Meridian Street, Suite 205  
Indianapolis, IN 46260

