

# FOR LEASE

707 N. Logan Ave, Danville, IL



CORNERSTONE



3707 N Logan Ave

## PROPERTY HIGHLIGHTS



Suite 401: 4,531 SF



ASC with Certificate of Need in a state with heavy CON restrictions



OSF Healthcare is anchor tenant



Situated 0.2 miles from OSF Sacred Heart Medical Center



Danville, IL is located 2.5 hours from Chicago, 1.5 hours from Indianapolis, and 0.5 hours from Champaign & Urbana



## CONTACT

**Ben Cohen, MBA**

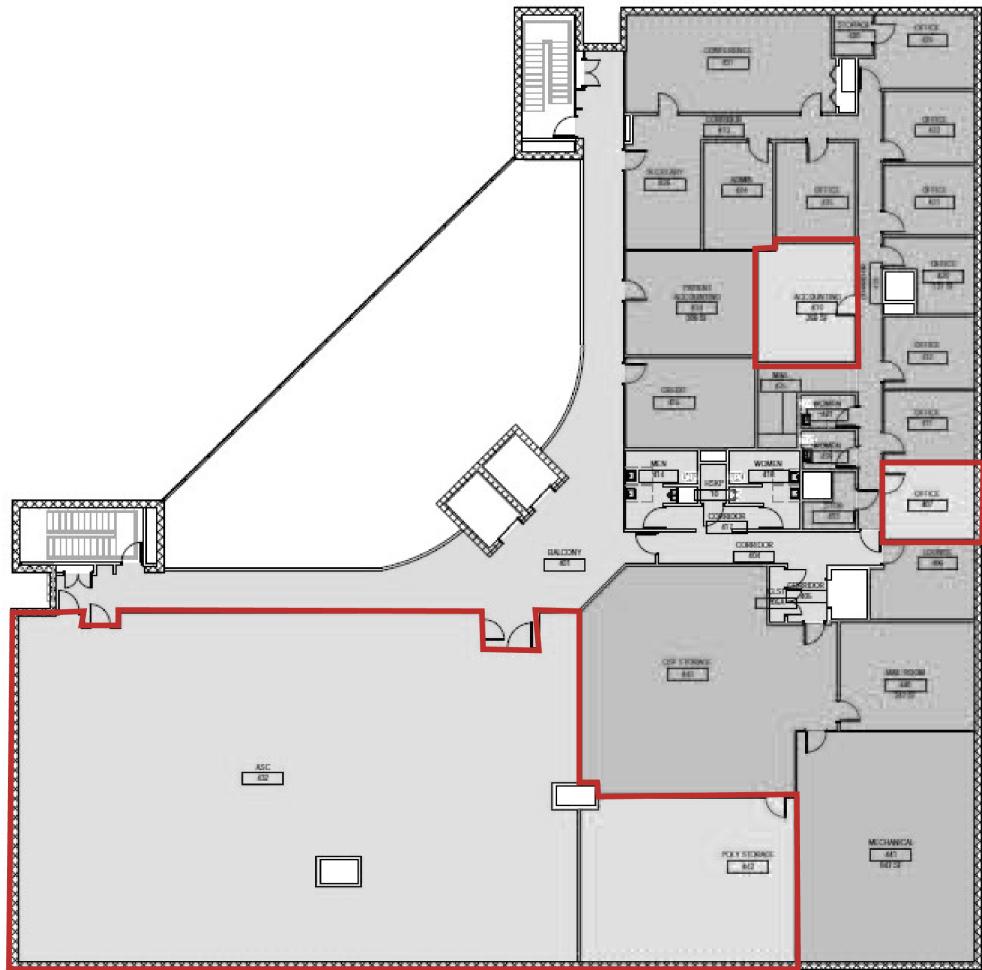
Vice President

317.754.6245

[bcohen@cornerstonecompaniesinc.com](mailto:bcohen@cornerstonecompaniesinc.com)

Cornerstone Companies, Inc.  
8902 N Meridian Street, Suite 205, Indianapolis, IN  
<https://cornerstonecompaniesinc.com> | 317.841.9900

# FLOOR PLAN



**Suite 401:**  
4,531 SF

## DEMOGRAPHICS | 5-MILE RADIUS



40,827  
Population



\$75,701  
Median  
Net Worth



16,537  
Households



40.8  
Median Age



\$56,870  
Median  
Household  
Income



\$26,835  
Per Capita  
Income



CONTACT

Ben Cohen, MBA  
Vice President  
317.754.6245

[bcohen@cornerstonecompaniesinc.com](mailto:bcohen@cornerstonecompaniesinc.com)



CORNERSTONE

© 2024 Cornerstone Companies, Inc. All rights reserved. Although the information contained herein has been obtained from sources deemed reliable, Owner, Cornerstone Companies, Inc., and/or their representatives, brokers or agents make no representation or warranty as to its accuracy or completeness. Any reliance on this information is solely at your own risk.