

# FOR SALE OR LEASE

373 Meridian Parke Ln, Suite B  
Greenwood, IN 46142



373 Meridian Parke Ln

## PROPERTY HIGHLIGHTS



Medical office for sale or lease | 5,864 SF + basement space (divisible)



Situated in the Meridian Parke development with many amenities nearby



High traffic area with great accessibility



Space features 13 exam rooms, 2 nurses' stations, 4 physician offices, breakroom, large file room/reception area, basement for additional storage, and a shared lobby with 2 separate waiting rooms and private entrances



## CONTACT

**Bill McClamroch**

Brokerage Associate

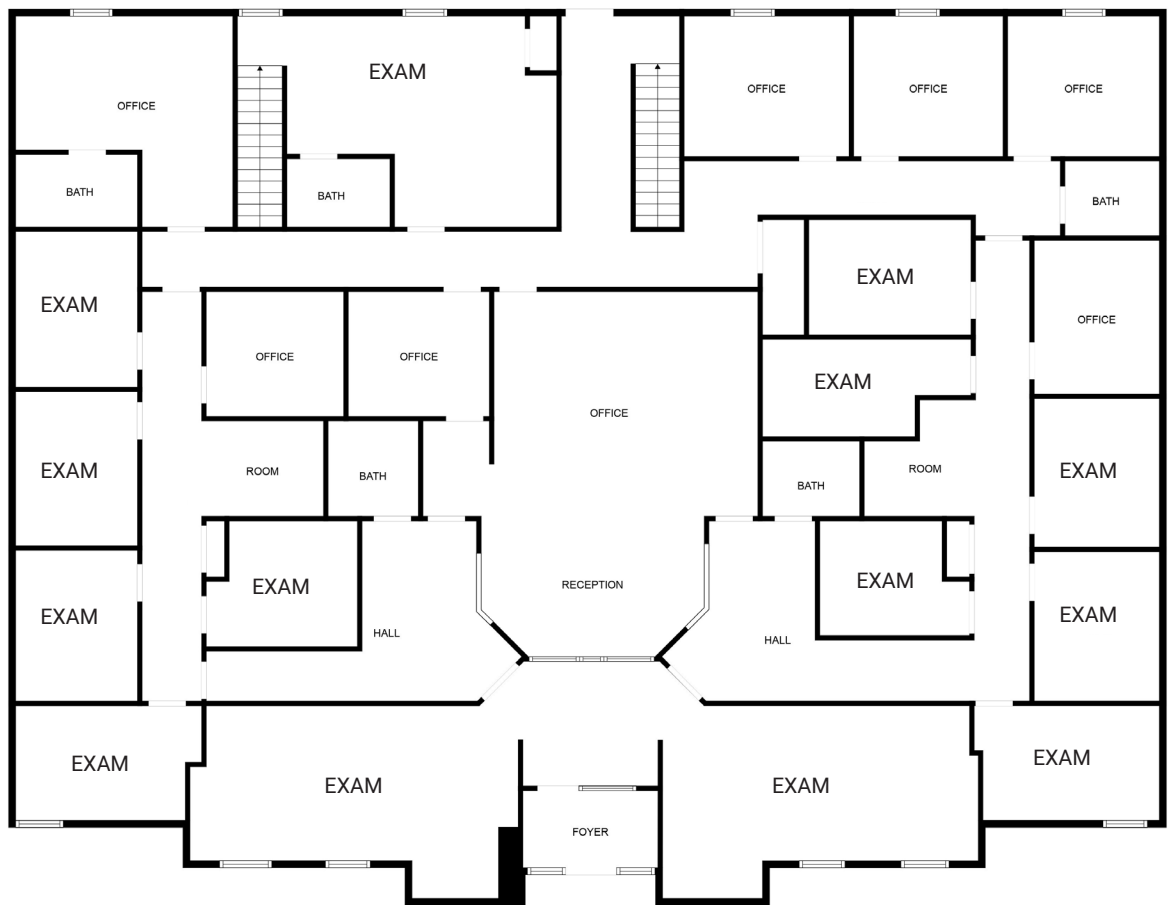
317.919.2992

[bmcclamroch@cornerstonecompaniesinc.com](mailto:bmcclamroch@cornerstonecompaniesinc.com)

Cornerstone Companies, Inc.  
8902 N Meridian Street, Suite 205, Indianapolis, IN  
[cornerstonecompaniesinc.com](http://cornerstonecompaniesinc.com) | 317.841.9900

## FLOOR PLAN SUITE B

5,864 SF



## DEMOGRAPHICS | 5-MILE RADIUS



174,195

Population



69,531

Households



\$84,500

Median  
Household  
Income



CONTACT

**Bill McClamroch**  
Brokerage Associate  
317.919.2992

[bmcclamroch@cornerstonecompaniesinc.com](mailto:bmcclamroch@cornerstonecompaniesinc.com)



CORNERSTONE

© 2025 Cornerstone Companies, Inc. All rights reserved. Although the information contained herein has been obtained from sources deemed reliable, Owner, Cornerstone Companies, Inc., and/or their representatives, brokers or agents make no representation or warranty as to its accuracy or completeness. Any reliance on this information is solely at your own risk.