

FOR SALE OR LEASE

373 Meridian Parke Ln, Suite B
Greenwood, IN 46142



373 Meridian Parke Ln

PROPERTY HIGHLIGHTS

- Medical office for sale or lease | 5,864 SF + basement space (*divisible*)
- Asking Price: \$1.3M
- Situated in the Meridian Parke development with many amenities nearby
- High traffic area with great accessibility
- Space features 13 exam rooms, 2 nurses' stations, 4 physician offices, breakroom, large file room/reception area, basement for additional storage, and a shared lobby with 2 separate waiting rooms and private entrances



CONTACT

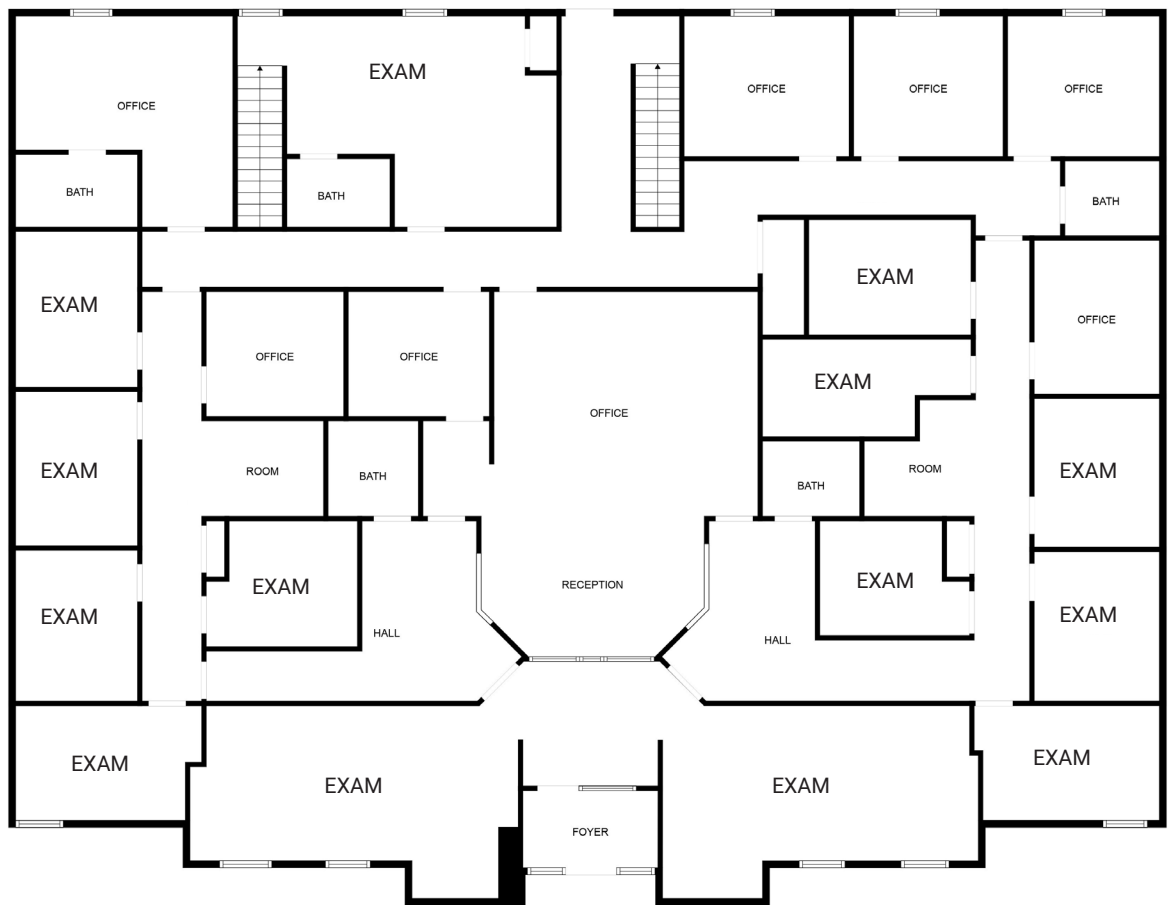
Bill McClamroch
Brokerage Associate
317.919.2992

bmcclamroch@cornerstonecompaniesinc.com

Cornerstone Companies, Inc.
8902 N Meridian Street, Suite 205, Indianapolis, IN
cornerstonecompaniesinc.com | 317.841.9900

FLOOR PLAN SUITE B

5,864 SF



DEMOGRAPHICS | 5-MILE RADIUS



174,195

Population



69,531

Households



\$84,500

Median
Household
Income



CONTACT

Bill McClamroch
Brokerage Associate
317.919.2992

bmcclamroch@cornerstonecompaniesinc.com



© 2025 Cornerstone Companies, Inc. All rights reserved. Although the information contained herein has been obtained from sources deemed reliable, Owner, Cornerstone Companies, Inc., and/or their representatives, brokers or agents make no representation or warranty as to its accuracy or completeness. Any reliance on this information is solely at your own risk.