


FOR LEASE

373 Meridian Parke Ln, Suite B
Greenwood, IN 46142




 373 Meridian Parke Ln

PROPERTY HIGHLIGHTS

 Medical office for lease | 5,864 SF + basement space (divisible)

 Situated in the Meridian Parke development with many amenities nearby

 High traffic area with great accessibility

 Space features 13 exam rooms, 2 nurses' stations, 4 physician offices, breakroom, large file room/reception area, basement for additional storage, and a shared lobby with 2 separate waiting rooms and private entrances



CONTACT

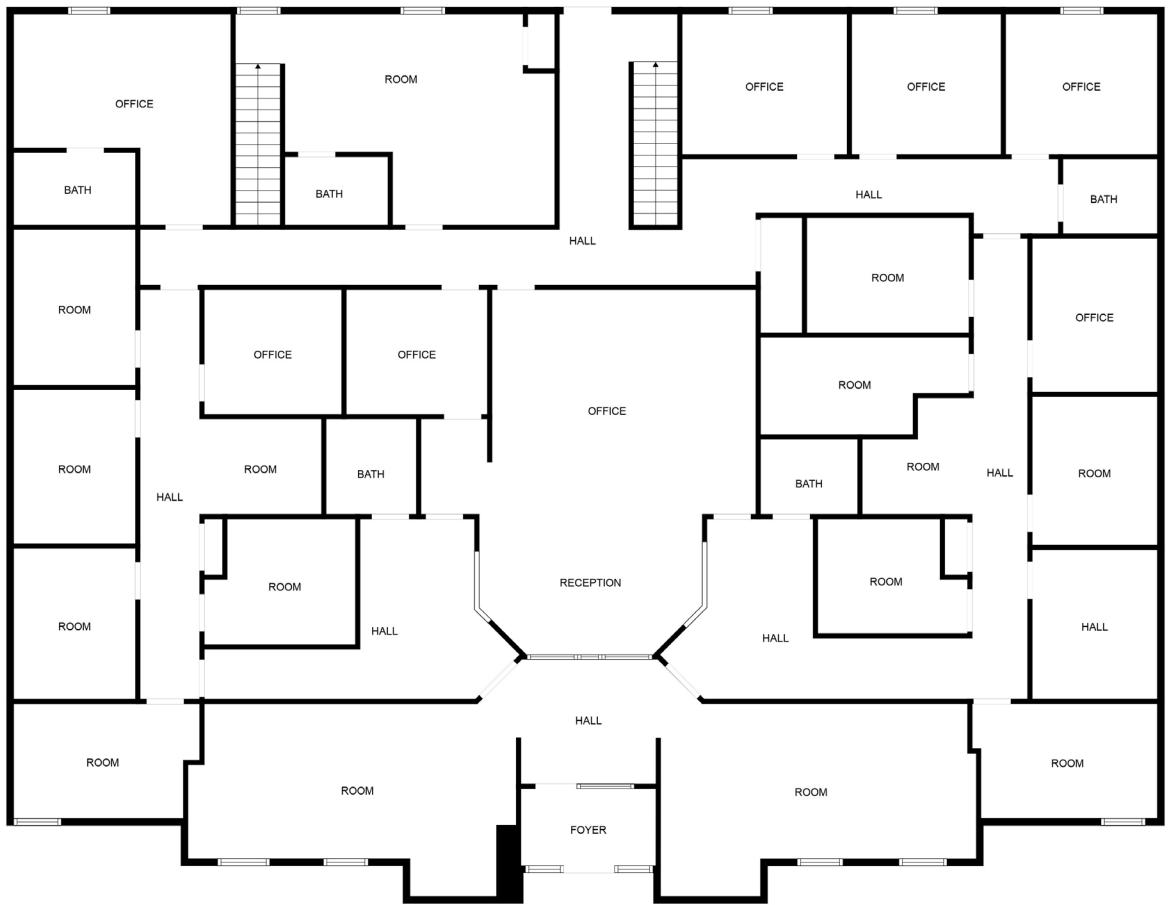
Bill McClamroch
Brokerage Associate
317.919.2992

bmclamroch@cornerstonecompaniesinc.com

Cornerstone Companies, Inc.
8902 N Meridian Street, Suite 205, Indianapolis, IN
<https://cornerstonecompaniesinc.com> | 317.841.9900

FLOORPLAN
SUITE B

5,864 SF



MOB LOCATION | 5-MILE RADIUS



174,195

Population



69,531

Households



\$84,500

Median
Household
Income



CONTACT

Bill McClamroch
Brokerage Associate
317.919.2992

bmcclamroch@cornerstonecompaniesinc.com

