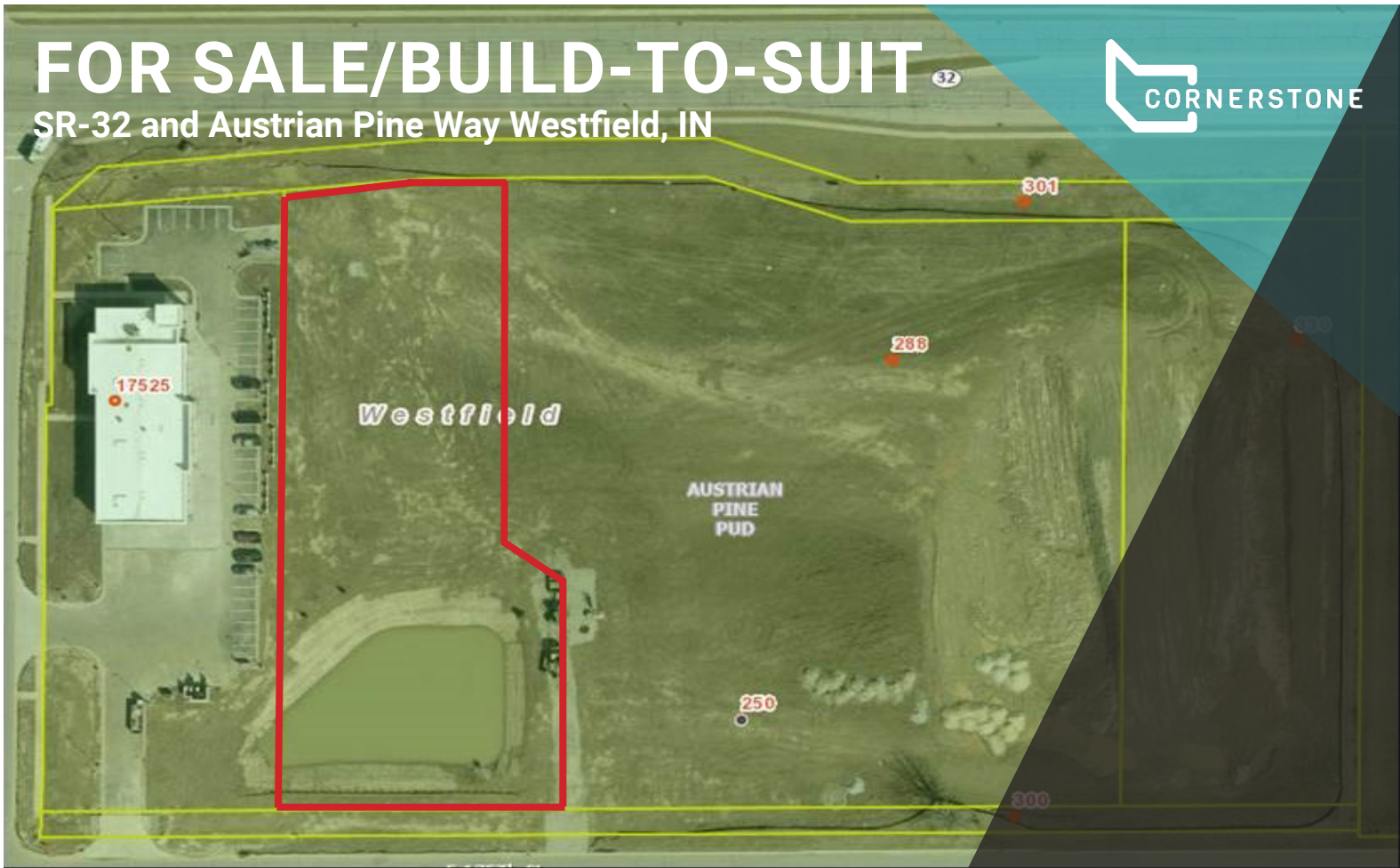


FOR SALE/BUILD-TO-SUIT

SR-32 and Austrian Pine Way Westfield, IN



PROPERTY HIGHLIGHTS

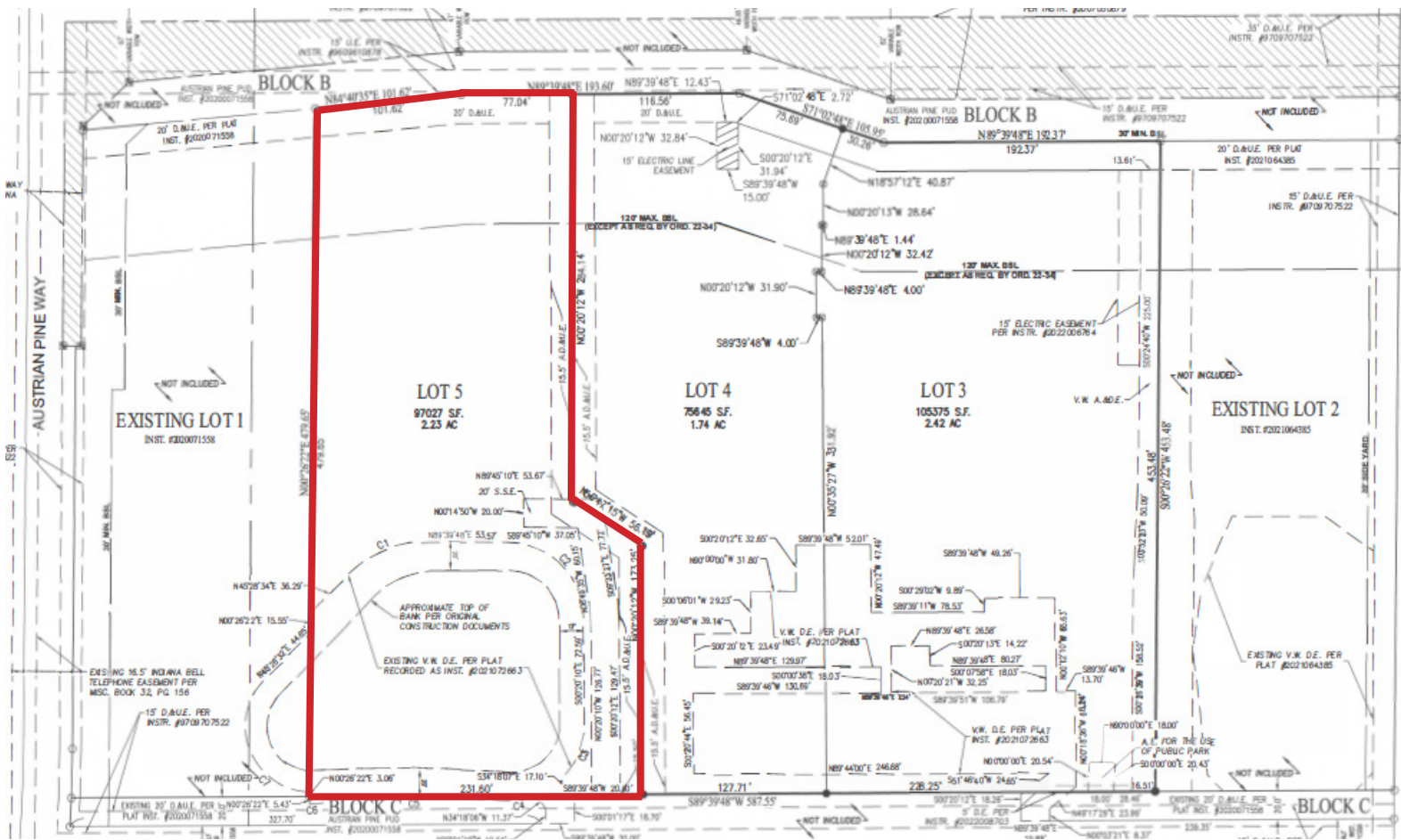
- 2.23 acres for sale/build-to-suit
- SR-32 frontage
- Prime medical office opportunity
- Retention pond and North-South access roads have been completed
- Just west of OrthoIndy MOB and HOPD facility



CONTACT

Ross Goyer
EVP, Brokerage
317-493-6273
rgoyer@cciin.com


Cornerstone Companies, Inc.
8902 N Meridian Street, Suite 205
Indianapolis, IN, 46260





DEMOGRAPHICS

 103,942
Population

 37
Median Age

 38,503
Households

 \$56,524
Per Capita Income

 \$115,373
Median Household Income

 CONTACT

Ross Goyer
EVP, Brokerage
317-493-6273
rgoyer@cciin.com

