

FOR LEASE



METHODIST MEDICAL PLAZA EAST
9650-9670 E Washington Street - Indianapolis, IN



PROPERTY HIGHLIGHTS

- 62,386 SF Class A medical office building with surgery center, radiology, and lab
- 5,539 SF Available For Lease:
 - Suite 205: 2,164 SF
 - Suite 235A: 2,437 SF
 - Suite 210: 938 SF
- Ample parking and covered patient drop-off
- Highly visible building and monument signage available
- Easily accessible from I-465
- Abundance of area amenities including retail, restaurants, and lodging



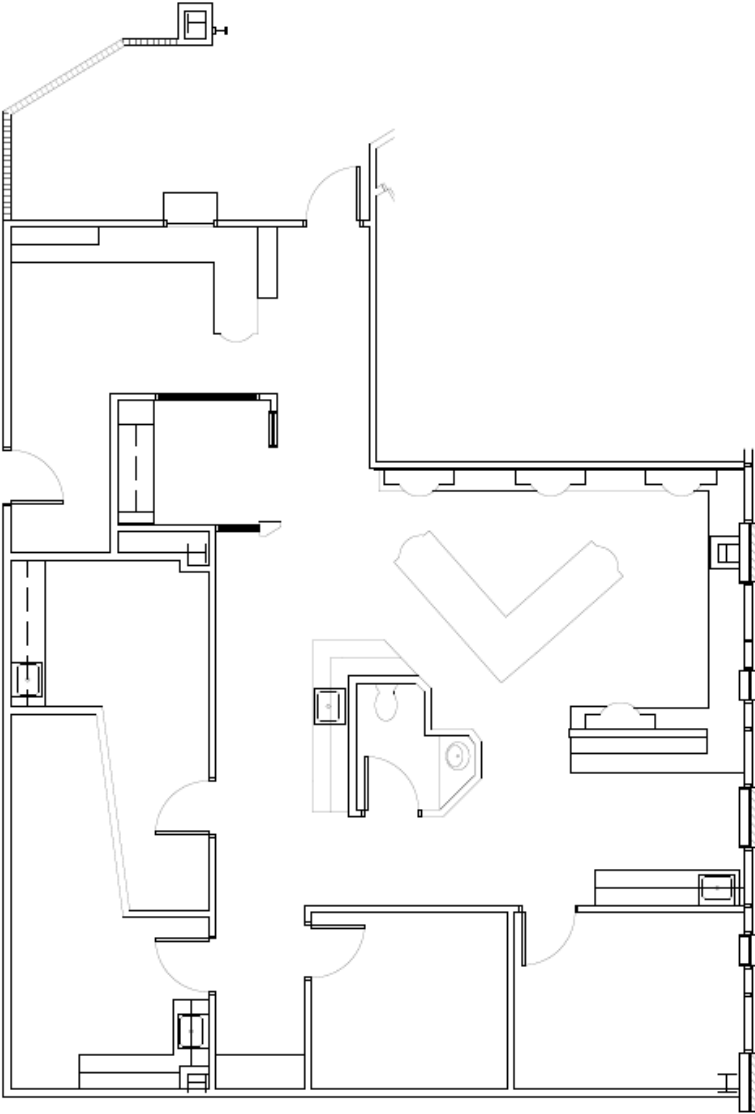
CONTACT

Ross Goyer
EVP, Brokerage
317-493-6273
rgoyer@cciin.com

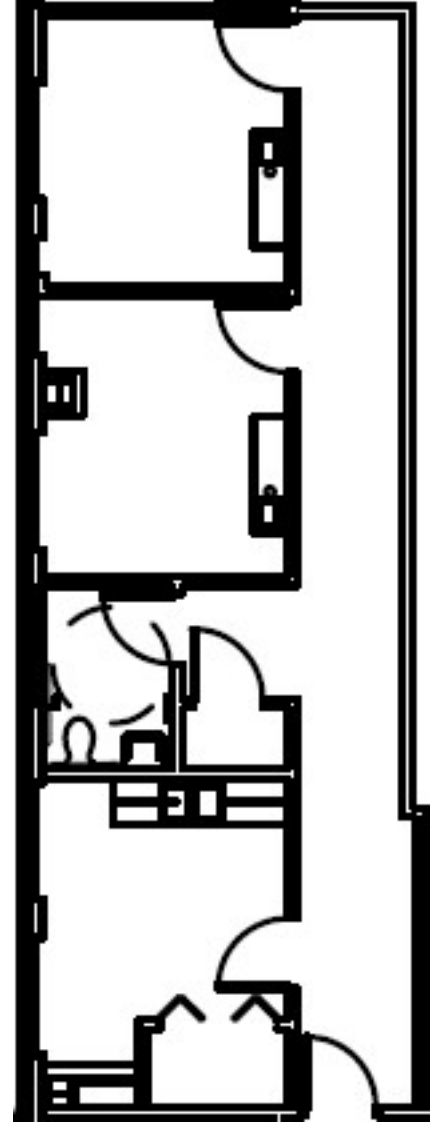
Cornerstone Companies, Inc.
8902 N Meridian Street, Suite 205
Indianapolis, IN, 46260

FLOOR PLANS

Suite 205
2,164 SF

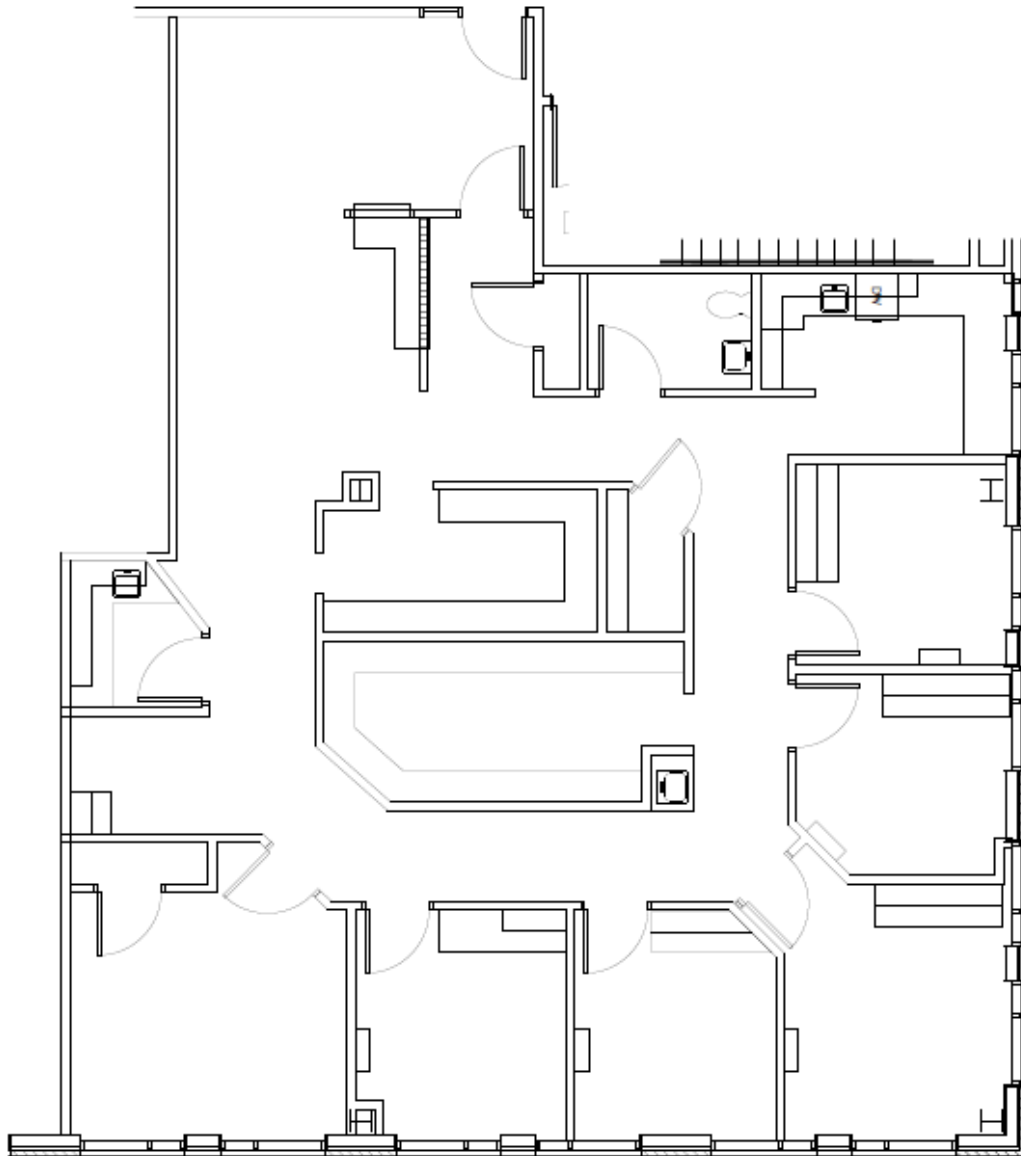


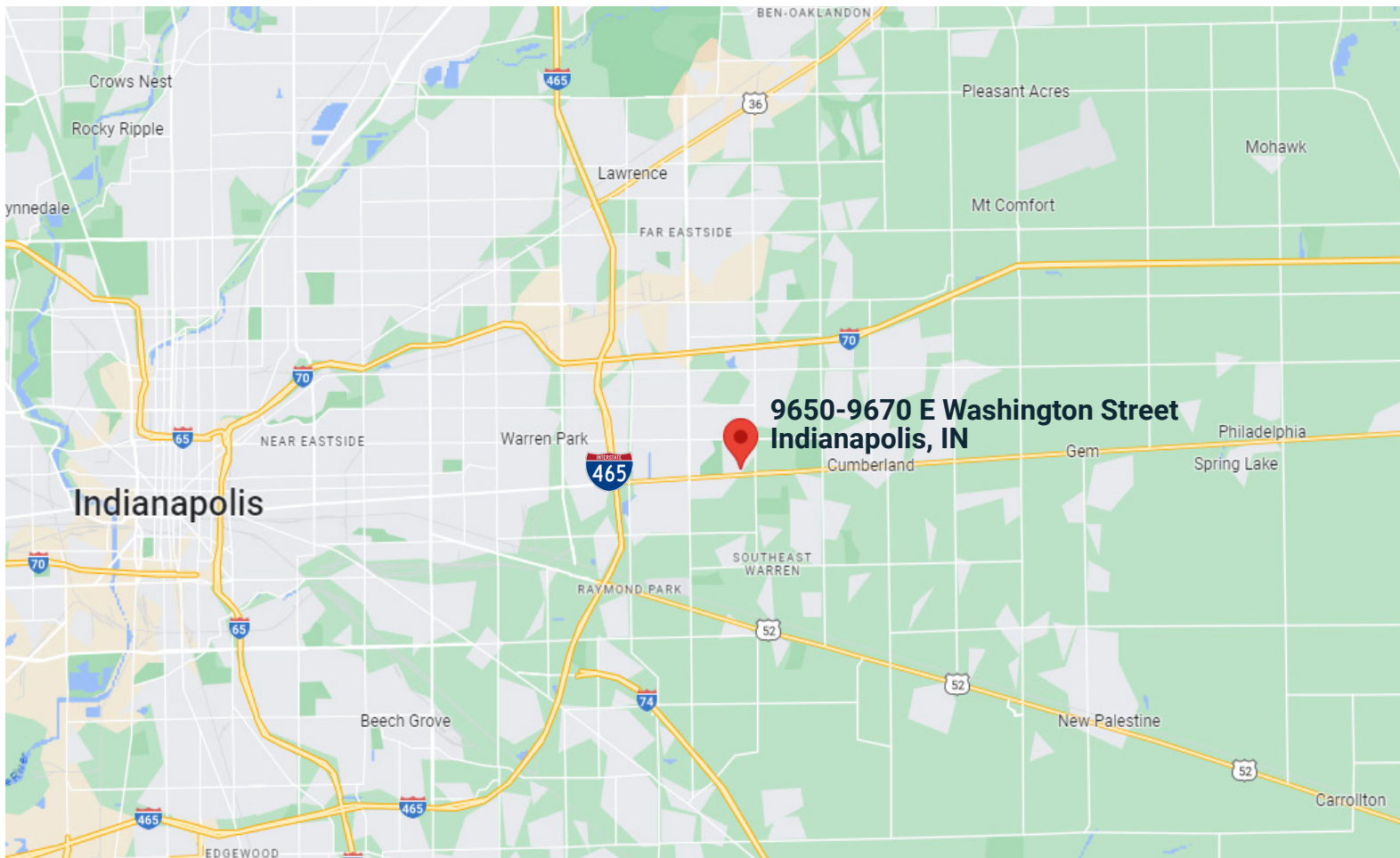
Suite 210
938 SF



FLOOR PLANS

Suite 235A
2,437 SF





DEMOGRAPHICS



158,814
Population



36.4
Median Age



61,433
Households



\$28,746
Per Capita
Income



\$55,717
Median
Household
Income



CONTACT

Ross Goyer

EVP, Brokerage

317-493-6273

rgoyer@cciin.com



© 2022 Cornerstone Companies, Inc. All rights reserved. Although the information contained herein has been obtained from sources deemed reliable, Owner, Cornerstone Companies, Inc., and/or their representatives, brokers or agents make no representation or warranty as to its accuracy or completeness. Any reliance on this information is solely at your own risk.