

FOR LEASE

GLENDALE PROFESSIONAL PLAZA 2620 Kessler Blvd East Drive Indianapolis, IN



PROPERTY HIGHLIGHTS

- 5,284 SF Available For Lease:
 - Suite 200: 2,260 SF
 - Suite 215: 3,024 SF
- Class A office and medical space
- Located in the heart of Glendale, minutes from Broad Ripple Village and Keystone Crossing
- Covered patient drop-off



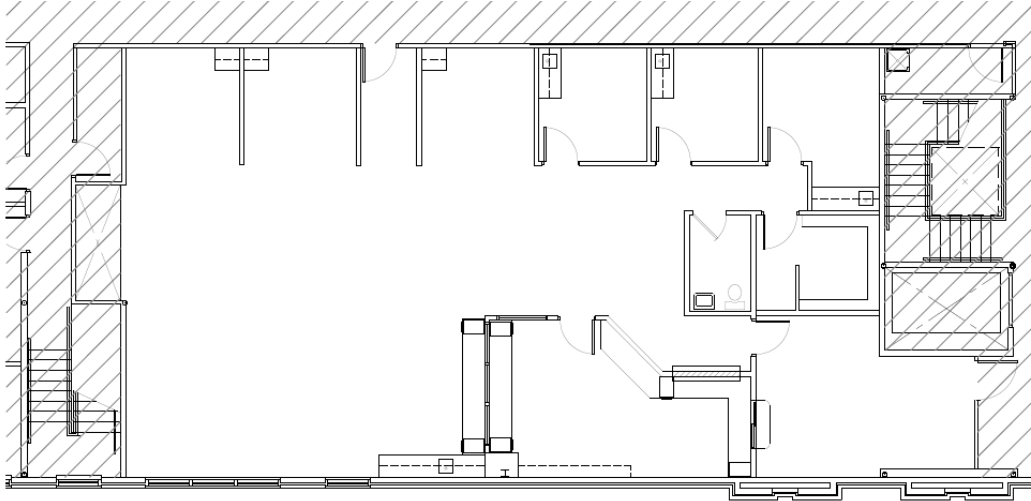
CONTACT

Ross Goyer
EVP, Brokerage
317-493-6273
rgoyer@cciin.com

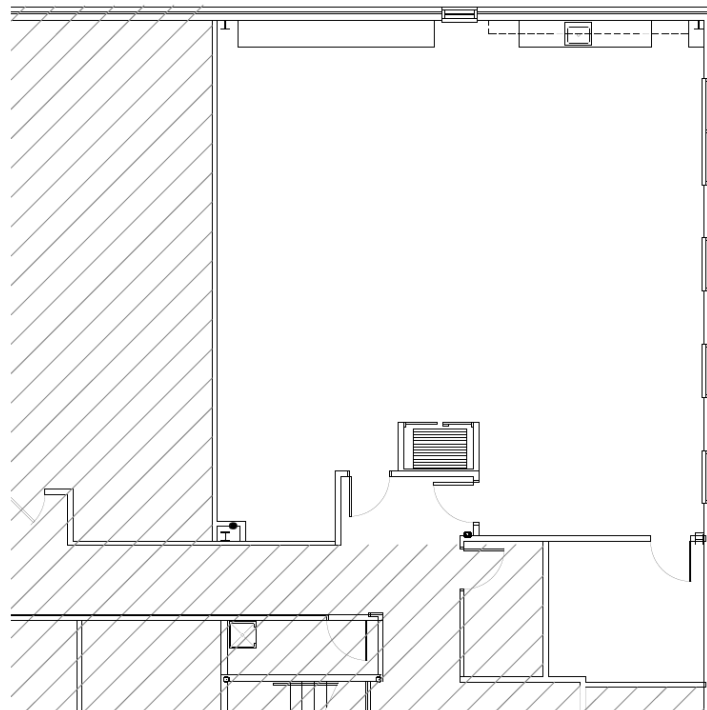
Cornerstone Companies, Inc.
8902 N Meridian Street, Suite 205
Indianapolis, IN, 46260

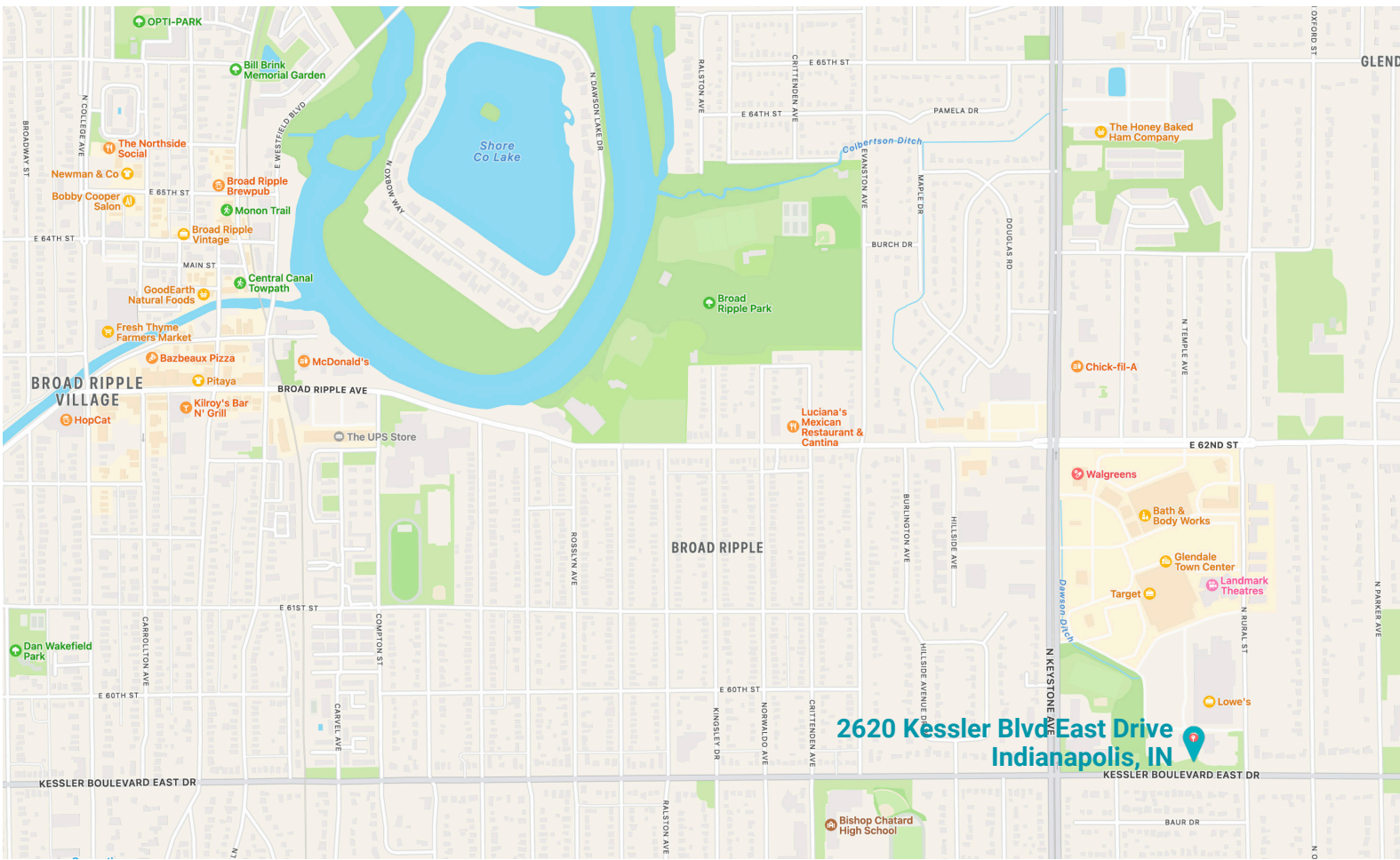
FLOOR PLAN

Suite 215:
3,024 SF



Suite 200:
2,260 SF





TRAFFIC COUNT

41,813 vehicles per day on Keystone Ave

15,750 vehicles per day on E Kessler Blvd

KEY TENANTS



CONTACT

Ross Goyer
EVP, Brokerage
317-493-6273
rgoyer@cciin.com



© 2022 Cornerstone Companies, Inc. All rights reserved. Although the information contained herein has been obtained from sources deemed reliable, Owner, Cornerstone Companies, Inc., and/or their representatives, brokers or agents make no representation or warranty as to its accuracy or completeness. Any reliance on this information is solely at your own risk.