

FOR LEASE



METHODIST MEDICAL PLAZA EAST
9650-9670 E Washington Street - Indianapolis, IN



PROPERTY HIGHLIGHTS

- 62,386 SF Class A medical office building with surgery center, radiology, and lab
- 4,601 SF Available For Lease:
 - Suite 205: 2,164 SF
 - Suite 235A: 2,437 SF
- Ample parking and covered patient drop-off
- Highly visible building and monument signage available
- Easily accessible from I-465
- Abundance of area amenities including retail, restaurants, and lodging



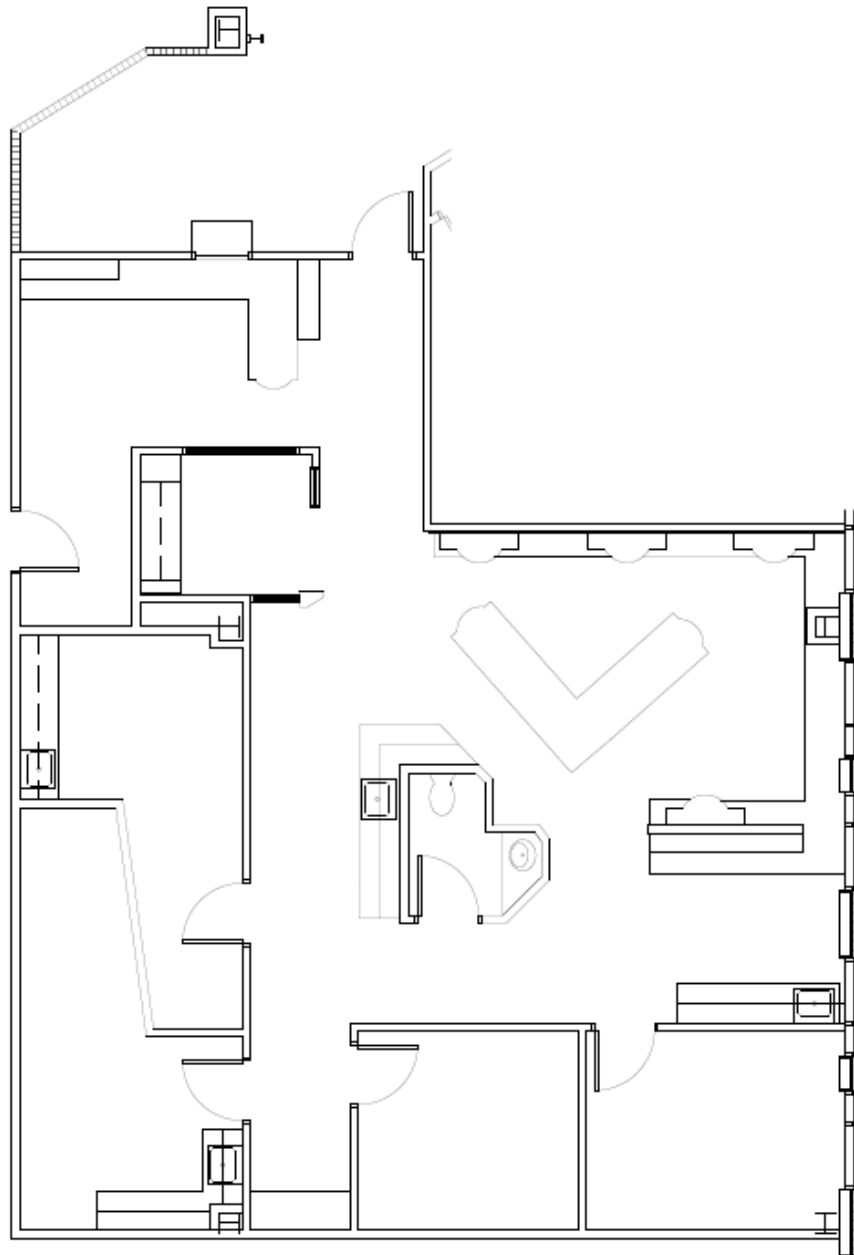
CONTACT

Ross Goyer
EVP, Brokerage
317-493-6273
rgoyer@cciin.com

Cornerstone Companies, Inc.
8902 N Meridian Street, Suite 205
Indianapolis, IN, 46260

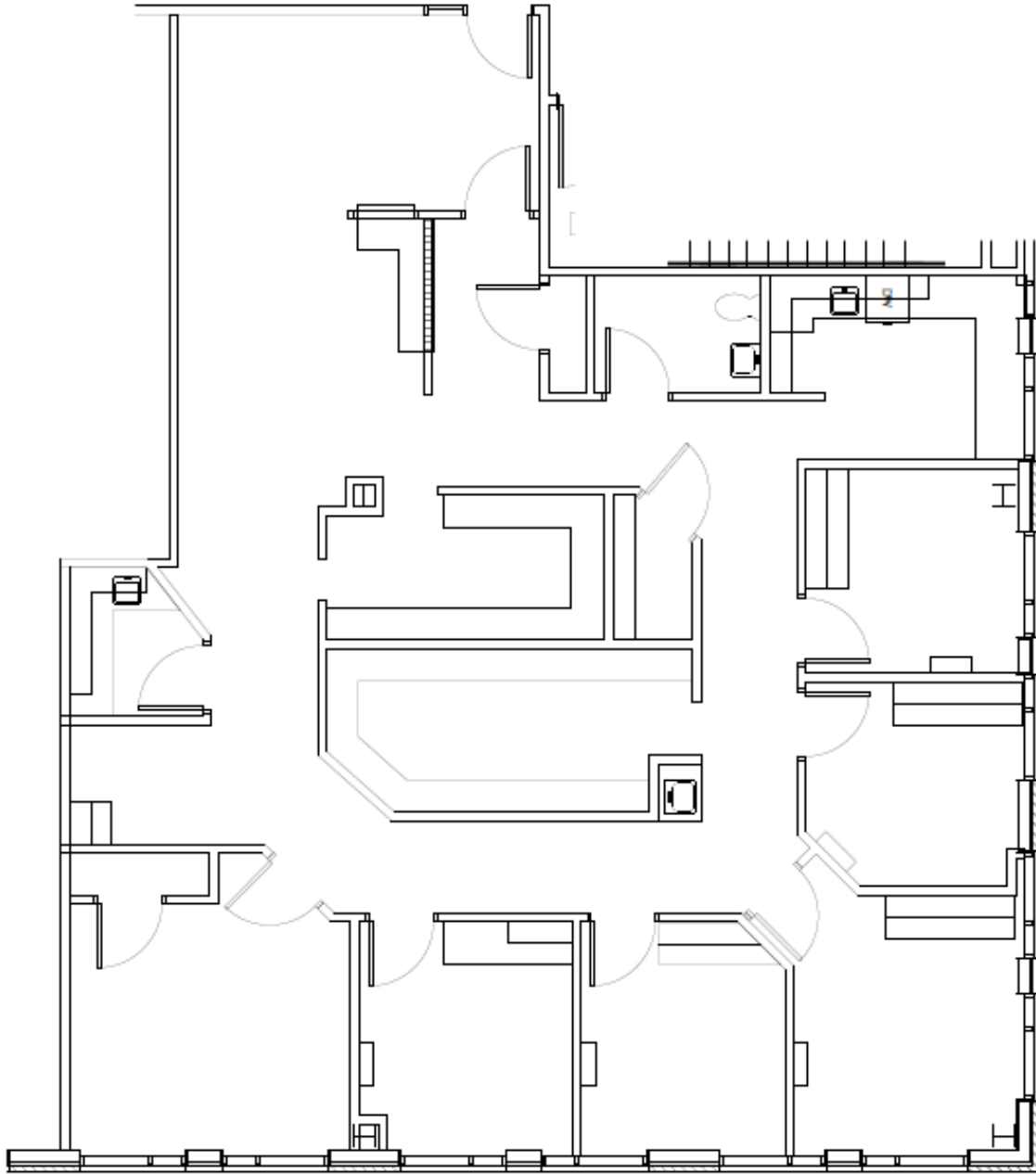
FLOOR PLANS

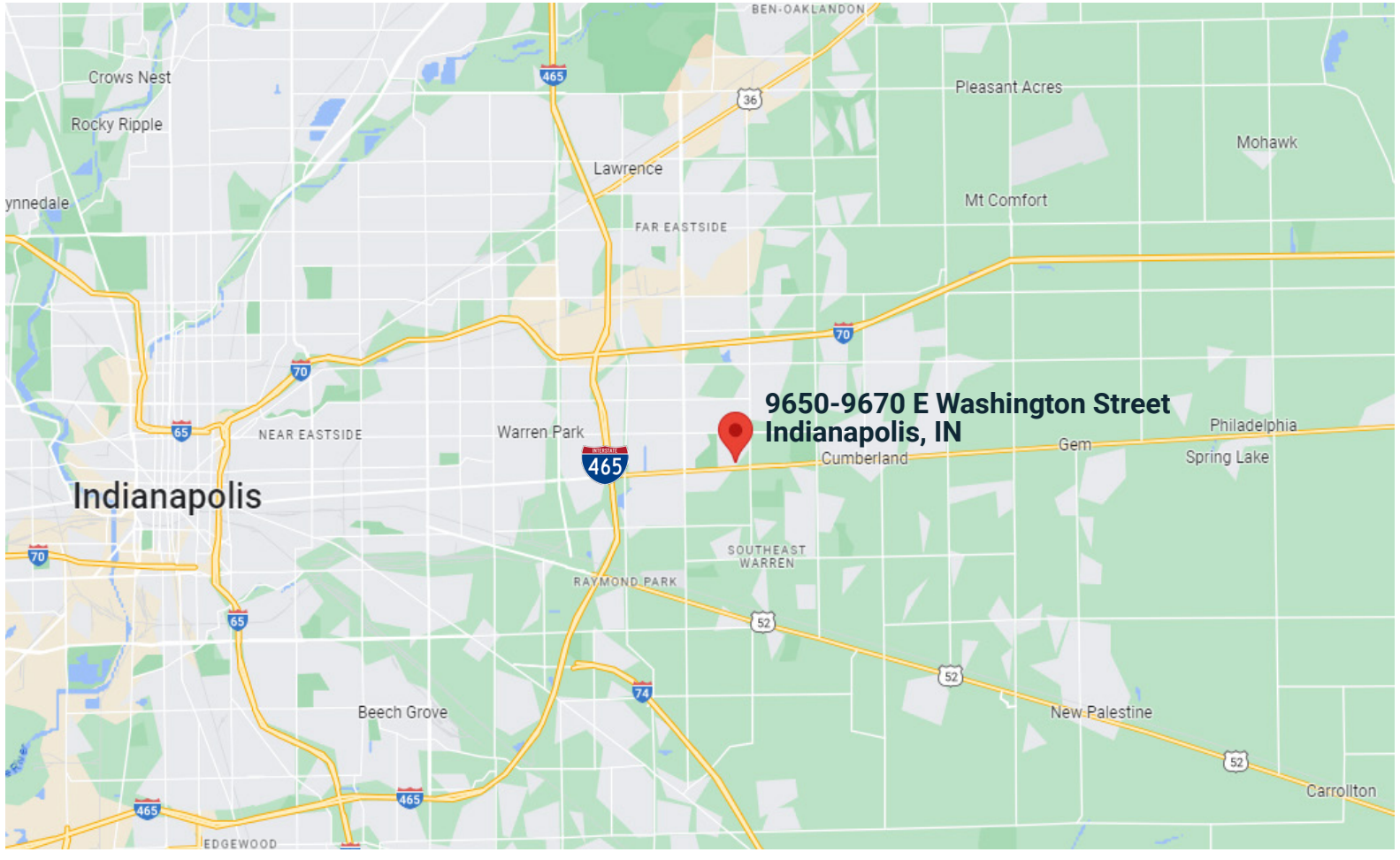
Suite 205
2,164 SF



FLOOR PLANS


Suite 235A
2,437 SF






**9650-9670 E Washington Street
Indianapolis, IN**


DEMOGRAPHICS

 **158,814**
Population

 **36.4**
Median Age

 **61,433**
Households

 **\$28,746**
Per Capita Income

 **\$55,717**
Median Household Income

CONTACT

Ross Goyer
EVP, Brokerage
317-493-6273
rgoyer@cciin.com



© 2022 Cornerstone Companies, Inc. All rights reserved. Although the information contained herein has been obtained from sources deemed reliable, Owner, Cornerstone Companies, Inc., and/or their representatives, brokers or agents make no representation or warranty as to its accuracy or completeness. Any reliance on this information is solely at your own risk.