

# FOR LEASE

## METHODIST MEDICAL PLAZA EAST

9650-9670 E Washington Street Indianapolis, IN



## PROPERTY HIGHLIGHTS

- 62,386 SF medical office building with surgery center, radiology, and lab
- 2,164 SF of medical space for lease
- Ample parking with covered patient drop-off
- Highly visible building - monument signage available
- Easily accessible from I-465
- Abundance of area amenities including retail, restaurants, and lodging

 **METHODIST MEDICAL PLAZA EAST**  
9650-9670 E Washington Street  
Indianapolis, IN



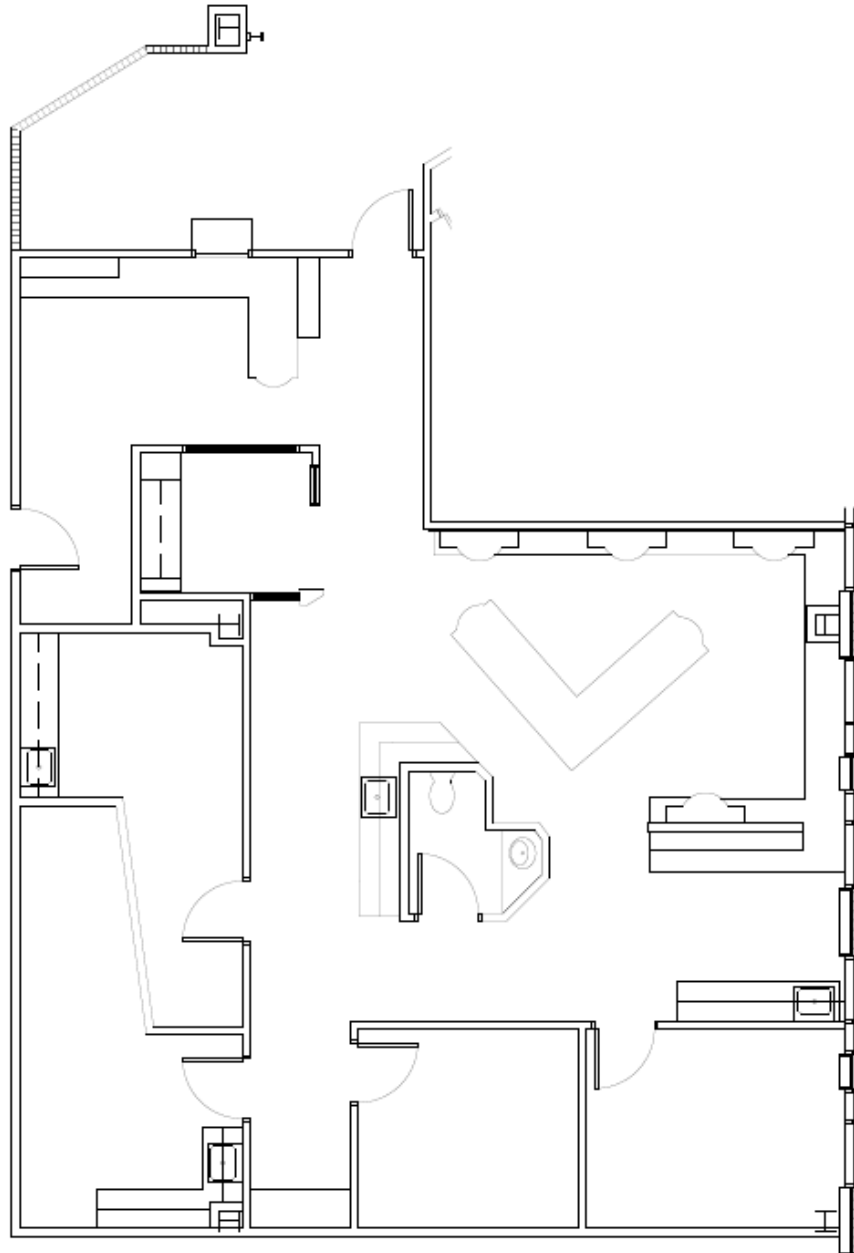
## CONTACT

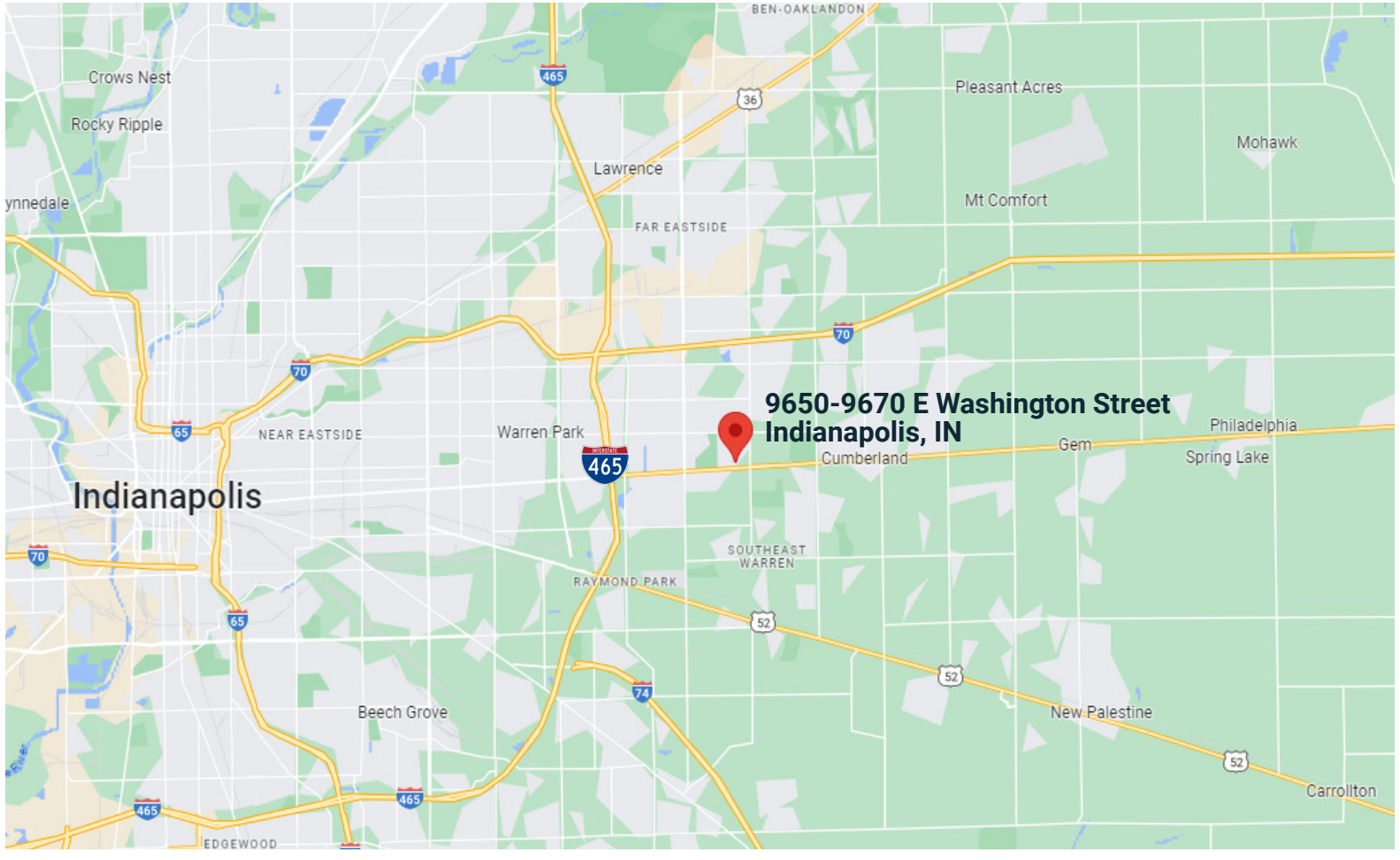
**Jennifer McAllister**  
Brokerage Associate  
(317) 288-9022  
[jmcallister@cciin.com](mailto:jmcallister@cciin.com)

Cornerstone Companies, Inc.  
8902 N Meridian Street, Suite 205  
Indianapolis, IN, 46260

# FLOOR PLANS


Suite 205  
2,164 SF





**9650-9670 E Washington Street  
Indianapolis, IN**


# DEMOGRAPHICS

 **158,814**  
Population

 **36.4**  
Median Age

 **61,433**  
Households

 **\$28,746**  
Per Capita Income

 **\$55,717**  
Median Household Income

## CONTACT

**Jennifer McAllister**  
Brokerage Associate  
(317) 288-9022  
[jmcallister@cciin.com](mailto:jmcallister@cciin.com)



© 2022 Cornerstone Companies, Inc. All rights reserved. Although the information contained herein has been obtained from sources deemed reliable, Owner, Cornerstone Companies, Inc., and/or their representatives, brokers or agents make no representation or warranty as to its accuracy or completeness. Any reliance on this information is solely at your own risk.