

FOR LEASE

2620 Kessler Blvd. East Dr, Indianapolis, IN



PROPERTY HIGHLIGHTS

- 17,054 SF For Lease:
 - Suite 105: 7,691 SF - *move-in ready office space*
 - Suite 200: 2,260 SF
 - Suite 215: 3,024 SF - *2nd gen medical space*
 - Suite 230: 4,079 SF - *move-in ready office space*
- Turnkey office space available
- Located in the heart of Glendale, minutes from Broad Ripple Village and Keystone Crossing
- Covered patient drop-off
- Monument signage available
- Competitive tenant improvement allowance



GLENDALE PROFESSIONAL PLAZA
2620 Kessler Blvd. East Dr.
Indianapolis, IN



CONTACT

Jennifer McAllister
Brokerage Associate
(317) 288-9022
jmcallister@ccin.com

Cornerstone Companies, Inc.
8902 N Meridian Street, Suite 205
Indianapolis, IN, 46260

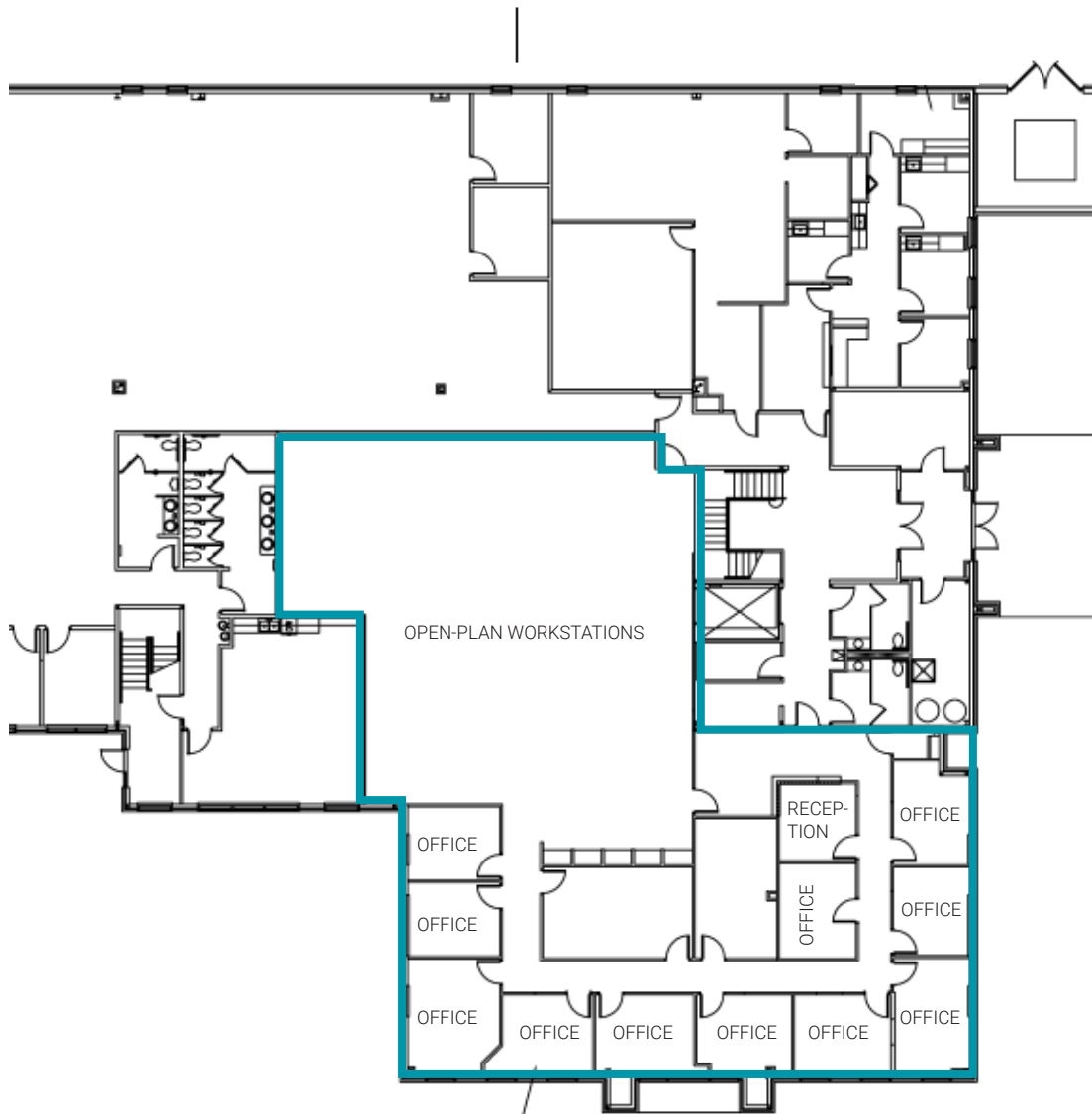
FLOOR PLANS

1st Floor

Suite 105:

7,691 SF

move-in ready office space

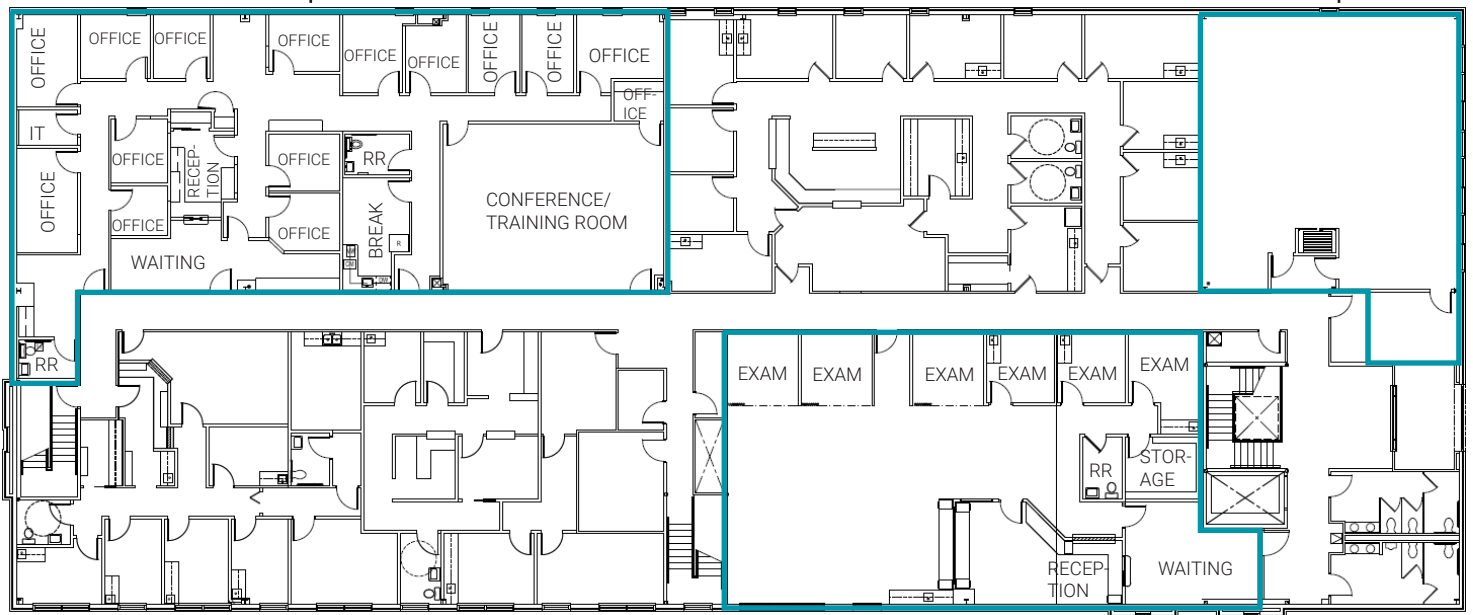


FLOOR PLANS

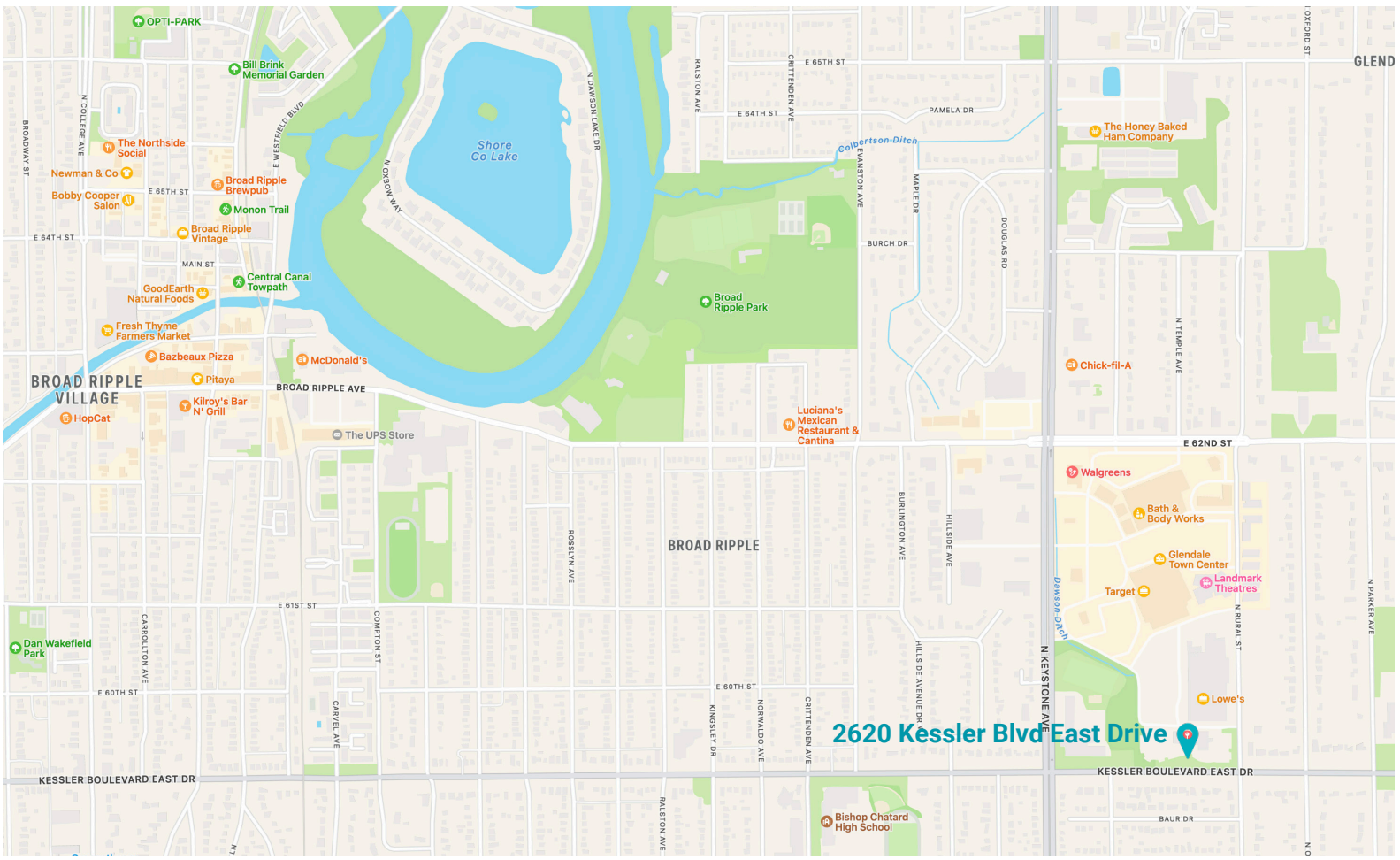
2nd Floor

Suite 230:
4,079 SF
move-in ready office space

Suite 200:
2,260 SF



Suite 215:
3,024 SF



TRAFFIC COUNT

41,813 vehicles per day on Keystone Ave.

15,750 vehicles per day on E Kessler Blvd.

DEMOGRAPHICS (5 - mile radius)



224,772
Population



36.4
Median Age



98,519
Households



\$80,405
Median Household Income



CONTACT

Jennifer McAllister
Brokerage Associate
(317) 288-9022
jmcallister@ccin.com



CORNERSTONE



HEALTHCARE REALTY

© 2022 Cornerstone Companies, Inc. All rights reserved. Although the information contained herein has been obtained from sources deemed reliable, Owner, Cornerstone Companies, Inc., and/or their representatives, brokers or agents make no representation or warranty as to its accuracy or completeness. Any reliance on this information is solely at your own risk.