


FOR LEASE

 2620 Kessler Blvd. East Dr, Indianapolis, IN

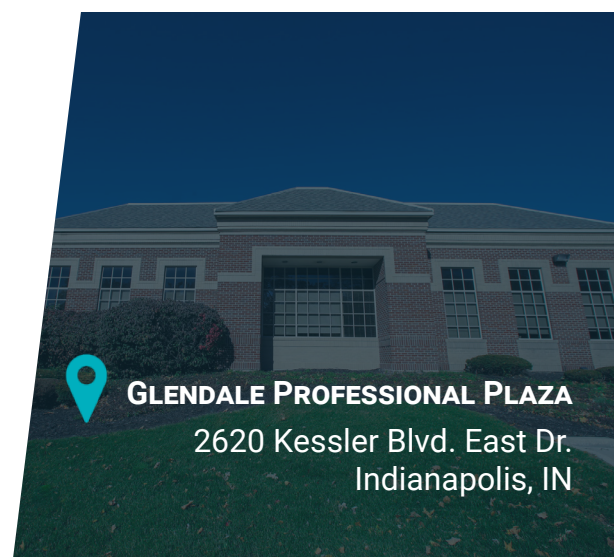
 CORNERSTONE

 HEALTHCARE
REALTY



PROPERTY HIGHLIGHTS

- 16,686 SF for lease:
 - Suite 105: 6,231 SF
 - Suite 115: 1,499 SF
 - Suite 200: 1,853 SF - *medical spec suite*
 - Suite 215: 3,024 SF - *2nd gen medical space*
 - Suite 230: 4,079 SF - *move-in ready office space*
- Located in the heart of Glendale, minutes from Broad Ripple Village
- Abundant parking with covered patient drop-off
- Monument signage
- Competitive tenant improvement allowances
- Prime healthcare setting conveniently located near several major hospital systems
 - Ascension St. Vincent Hospital - Indianapolis - 6.9 miles
 - Community Hospital North - 6.1 miles
 - IU Health Methodist Hospital - 6.4 miles
 - IU Health University Hospital - 8.6 miles
 - Sidney & Lois Eskenazi Hospital - 8.1 miles
 - Community Hospital East - 7.5 miles
 - IU Health Primary Care - Indianapolis - 0.8 miles
 - Community Physician Network, Family Medicine Care - 1.3 miles



GLENDALE PROFESSIONAL PLAZA

2620 Kessler Blvd. East Dr.
Indianapolis, IN



CONTACT

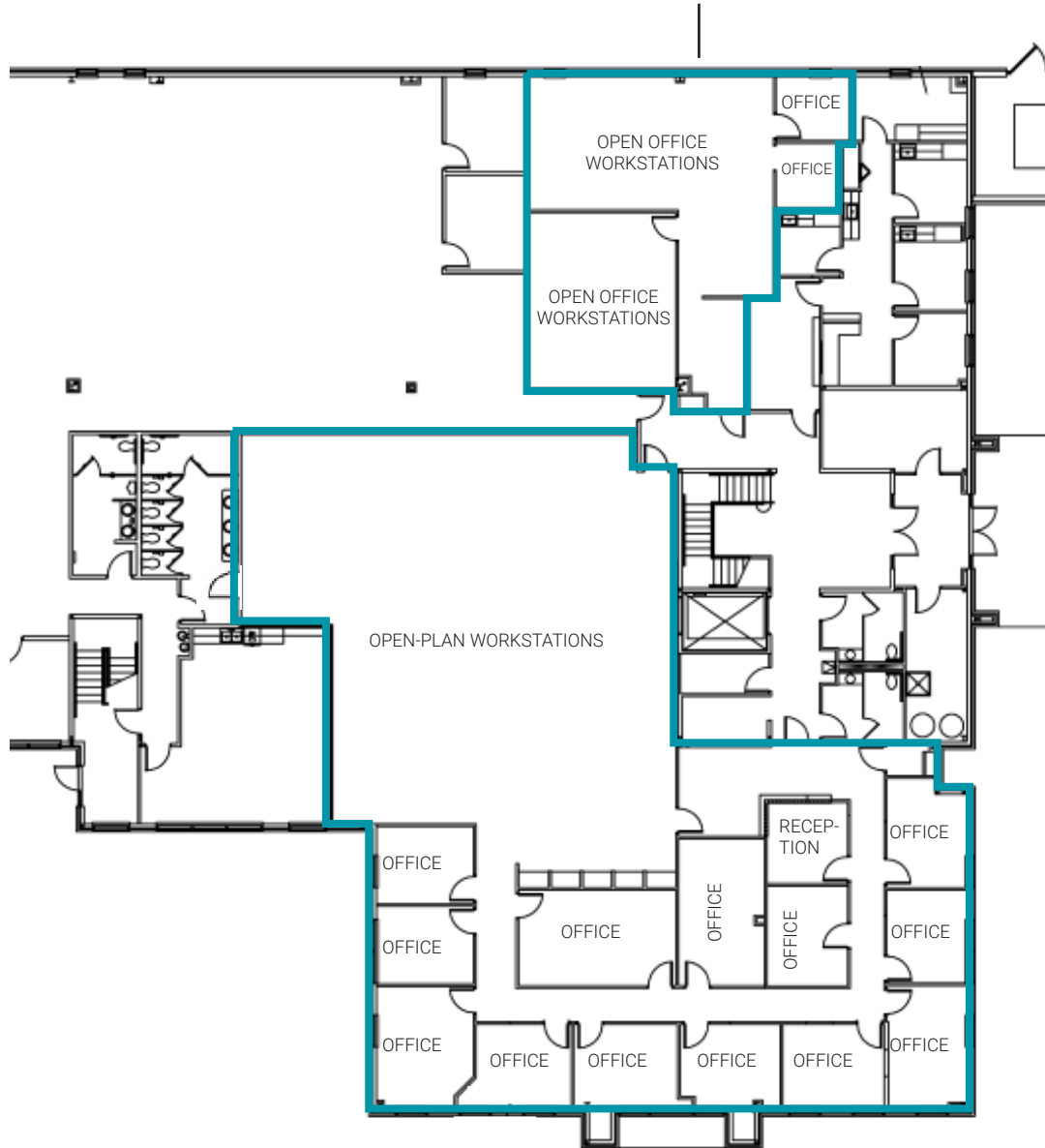
Jennifer McAllister
Brokerage Associate
(317) 288-9022
jmcallister@ccin.com

Cornerstone Companies, Inc.
8902 N Meridian Street, Suite 205
Indianapolis, IN, 46260

1st Floor

Suite 115:

1,499 SF



Suite 105:

6,231 SF

2nd Floor

Suite 230:

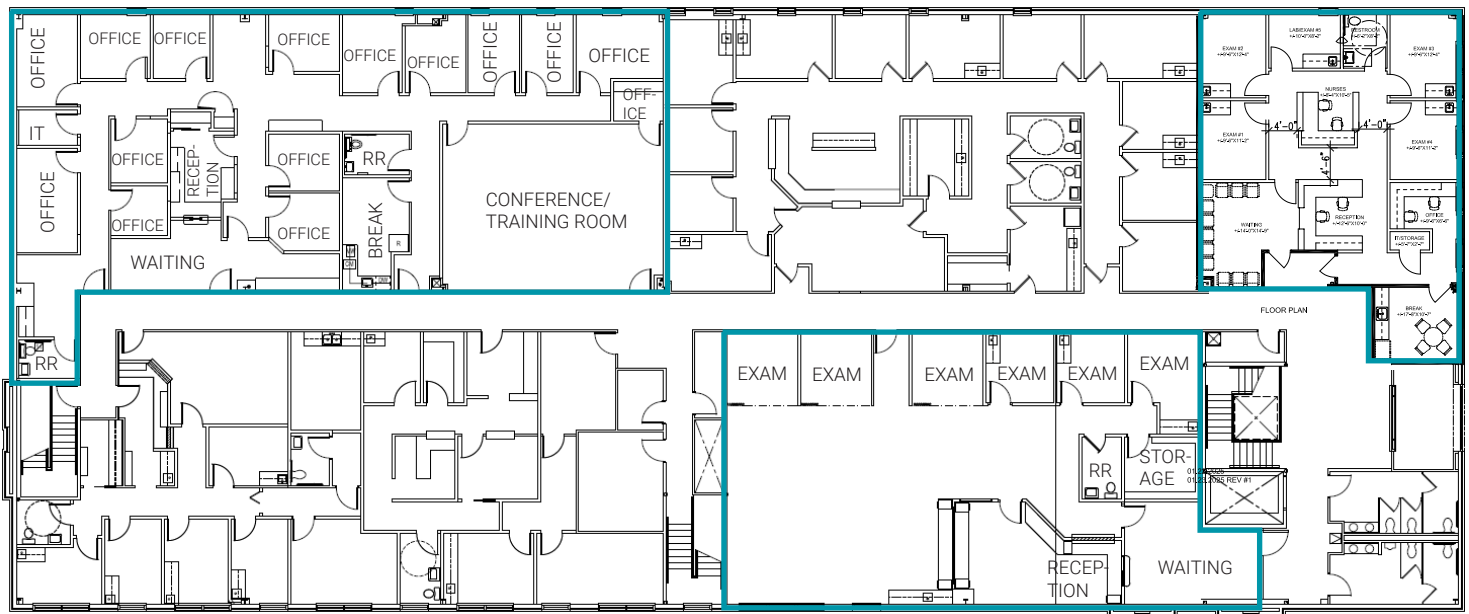
4,079 SF

move-in ready office space

SPEC SUITE

Suite 200:

1,853 SF



Suite 215:

3,024 SF

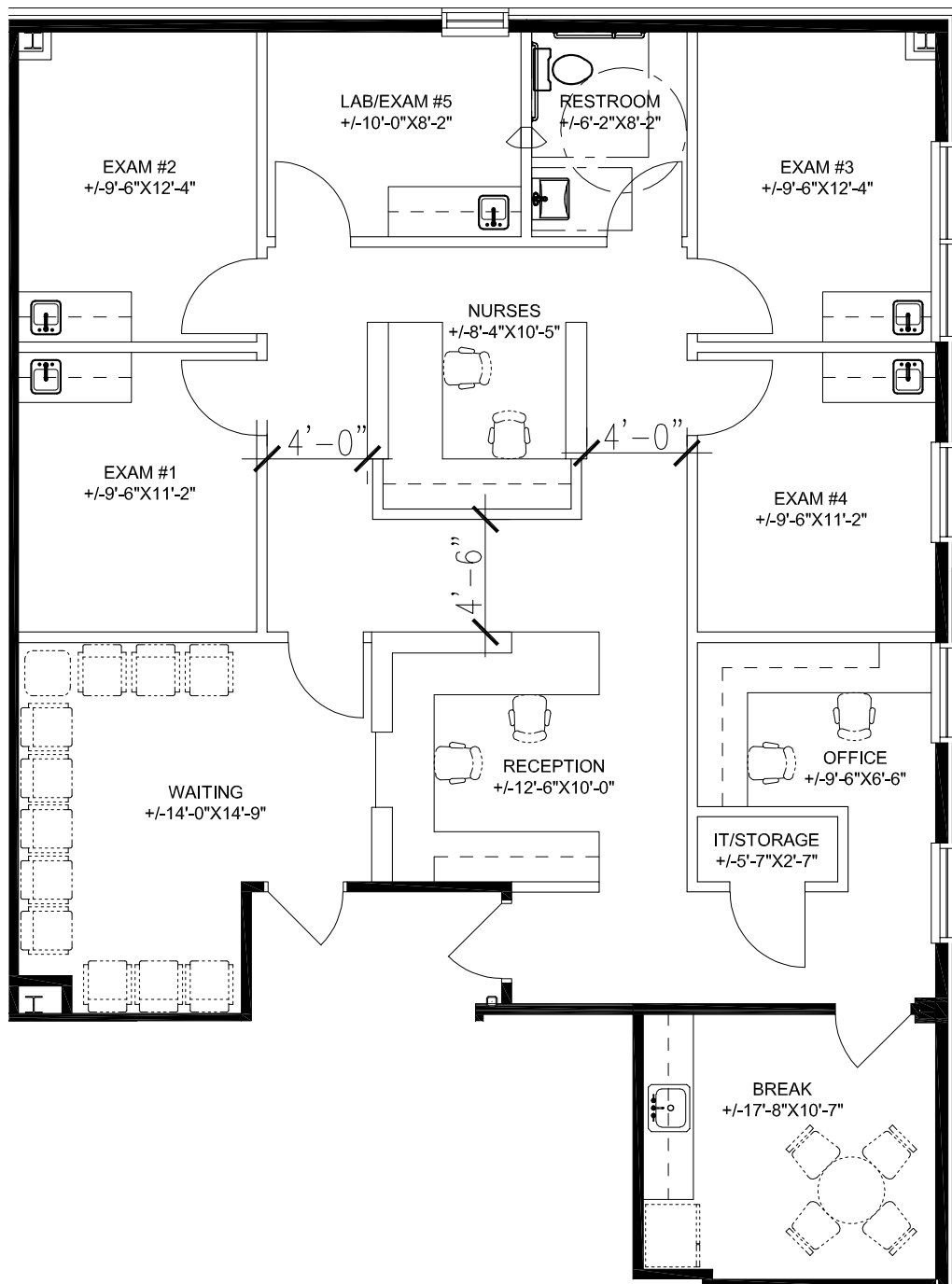
MEDICAL SPEC SUITE COMING SOON!

FLOOR PLAN

MEDICAL SPEC SUITE

Suite 200:

1,853 SF





TRAFFIC COUNT

41,813 vehicles per day on Keystone Ave.

15,750 vehicles per day on E Kessler Blvd.

DEMOGRAPHICS (5 - mile radius)



224,772
Population



36.4
Median Age



98,519
Households



\$80,405
Median Household Income



CONTACT

Jennifer McAllister
Brokerage Associate
(317) 288-9022
jmcallister@ccin.com



CORNERSTONE



HEALTHCARE
REALTY

© 2022 Cornerstone Companies, Inc. All rights reserved. Although the information contained herein has been obtained from sources deemed reliable, Owner, Cornerstone Companies, Inc., and/or their representatives, brokers or agents make no representation or warranty as to its accuracy or completeness. Any reliance on this information is solely at your own risk.