

FOR LEASE

 2620 Kessler Blvd. East Dr, Indianapolis, IN

 CORNERSTONE

 HEALTHCARE
REALTY



PROPERTY HIGHLIGHTS

- 16,686 SF for lease:
 - Suite 105: 6,231 SF
 - Suite 115: 1,499 SF
 - Suite 200: 1,853 SF
 - Suite 215: 3,024 SF - *2nd gen medical space*
 - Suite 230: 4,079 SF - *move-in ready office space*
- Located in the heart of Glendale, minutes from Broad Ripple Village
- Abundant parking with covered patient drop-off
- Monument signage
- Competitive tenant improvement allowances
- Prime healthcare setting conveniently located near several major hospital systems
 - Ascension St. Vincent Hospital - Indianapolis - *6.9 miles*
 - Community Hospital North - *6.1 miles*
 - IU Health Methodist Hospital - *6.4 miles*
 - IU Health University Hospital - *8.6 miles*
 - Sidney & Lois Eskenazi Hospital - *8.1 miles*
 - Community Hospital East - *7.5 miles*
 - IU Health Primary Care - Indianapolis - *0.8 miles*
 - Community Physician Network, Family Medicine Care - *1.3 miles*



GLENDALE PROFESSIONAL PLAZA
2620 Kessler Blvd. East Dr.
Indianapolis, IN

 CONTACT

Jennifer McAllister
Brokerage Associate
(317) 288-9022
jmcallister@cciin.com

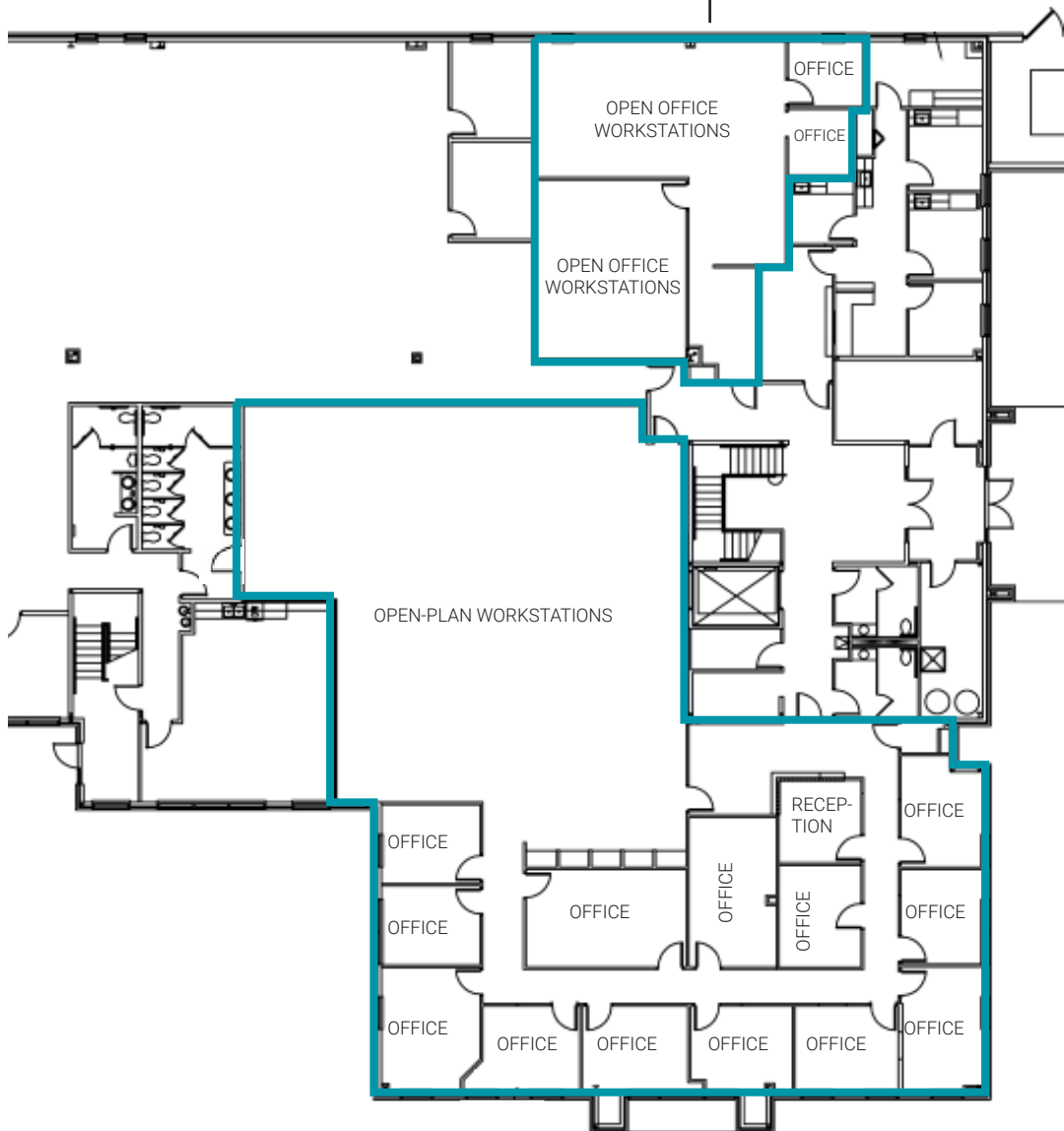
Cornerstone Companies, Inc.
8902 N Meridian Street, Suite 205
Indianapolis, IN, 46260

FLOOR PLANS

1st Floor

Suite 115:

1,499 SF



Suite 105:

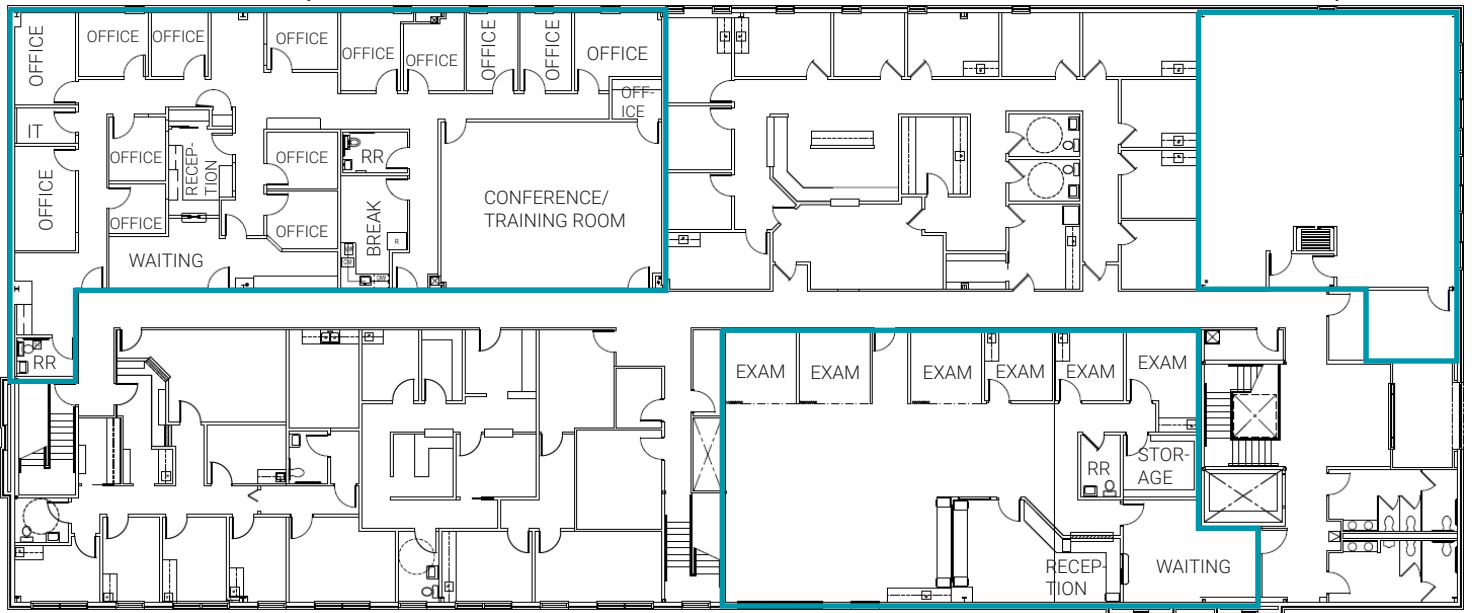
6,231 SF

FLOOR PLANS

2nd Floor

Suite 230:
4,079 SF
move-in ready office space

Suite 200:
1,853 SF



Suite 215:
3,024 SF




TRAFFIC COUNT


41,813 vehicles per day on Keystone Ave.


15,750 vehicles per day on E Kessler Blvd.

DEMOGRAPHICS (5 - mile radius)

 224,772
Population

 36.4
Median Age

 98,519
Households

 \$80,405
Median Household Income

CONTACT

Jennifer McAllister
Brokerage Associate
(317) 288-9022
jmcallister@cciin.com

