

# FOR LEASE

2620 Kessler Blvd. East Dr, Indianapolis, IN



## PROPERTY HIGHLIGHTS

- 18,109 SF For Lease:
  - Suite 105: 7,691 SF
  - Suite 110: 1,055 SF
  - Suite 200: 2,260 SF
  - Suite 215: 3,024 SF
  - Suite 230: 4,079 SF - *move-in ready office space*
- 2nd gen office and medical space available
- Located in the heart of Glendale, minutes from Broad Ripple Village and Keystone Crossing
- Covered patient drop-off



**GLENDALE PROFESSIONAL PLAZA**  
2620 Kessler Blvd. East Dr.  
Indianapolis, IN



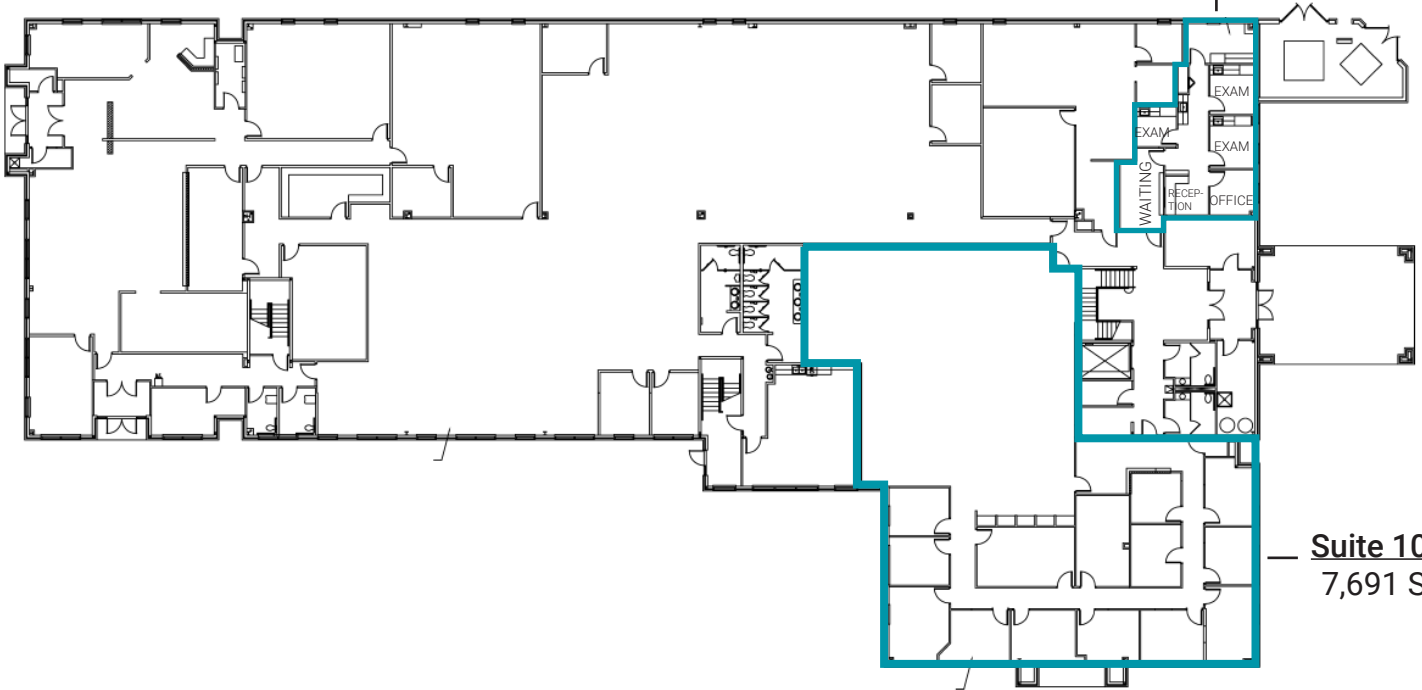
## CONTACT

**Jennifer McAllister**  
Brokerage Associate  
(317) 288-9022  
[jmcallister@cciin.com](mailto:jmcallister@cciin.com)

Cornerstone Companies, Inc.  
8902 N Meridian Street, Suite 205  
Indianapolis, IN, 46260

# FLOOR PLANS

**Suite 110:**  
1,055 SF

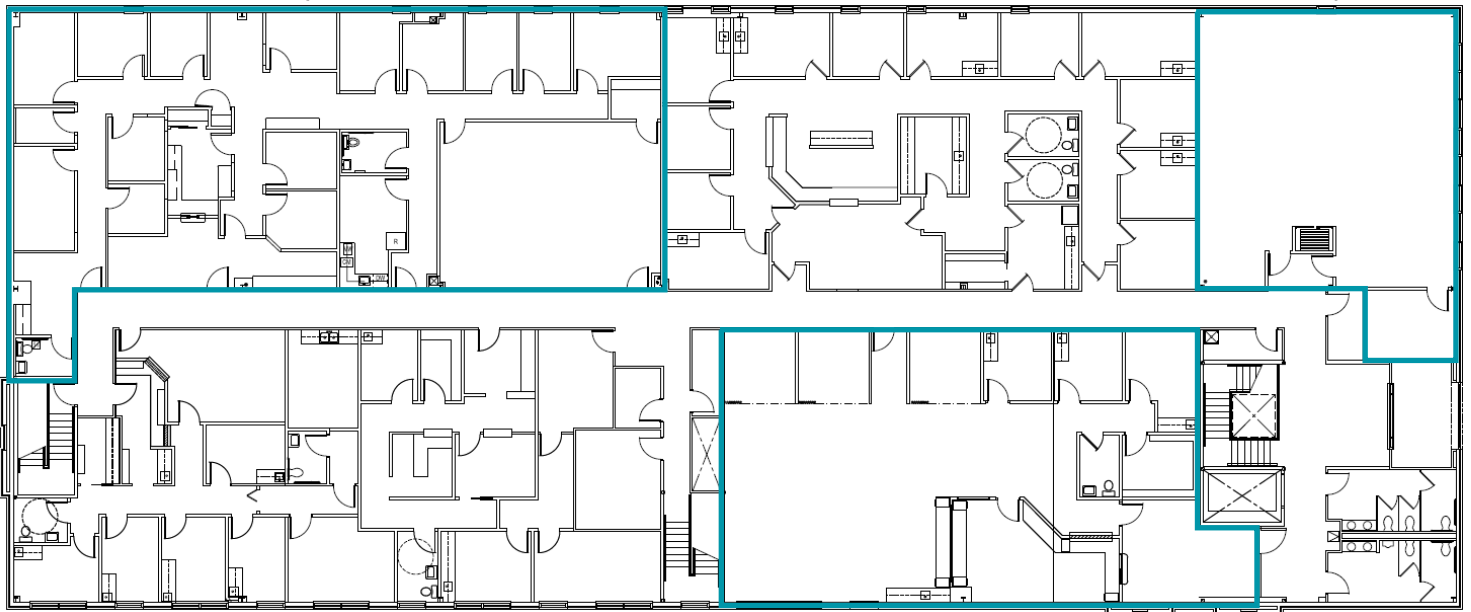


**Suite 105:**  
7,691 SF

**Suite 230:**  
4,079 SF

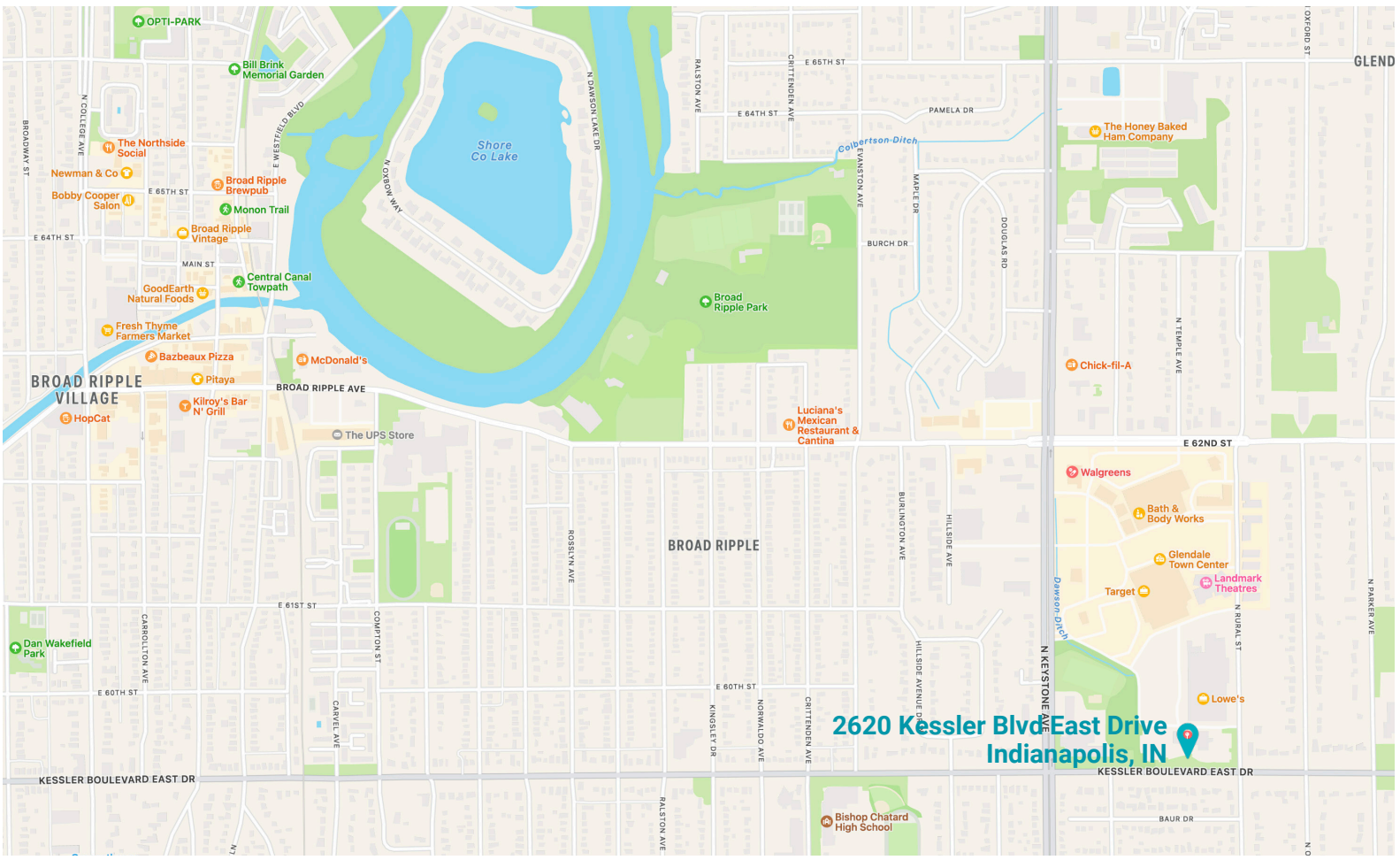
*move-in ready office space*

**Suite 200:**  
2,260 SF



**Suite 215:**  
3,024 SF





2620 Kessler Blvd East Drive  
Indianapolis, IN


# TRAFFIC COUNT

41,813 vehicles per day on Keystone Ave.

15,750 vehicles per day on E Kessler Blvd.

# DEMOGRAPHICS (5 - mile radius)

 224,772  
Population

 36.4  
Median Age

 98,519  
Households

 \$80,405  
Median Household Income

## CONTACT

**Jennifer McAllister**  
Brokerage Associate  
(317) 288-9022  
jmcallister@cciin.com



© 2022 Cornerstone Companies, Inc. All rights reserved. Although the information contained herein has been obtained from sources deemed reliable, Owner, Cornerstone Companies, Inc., and/or their representatives, brokers or agents make no representation or warranty as to its accuracy or completeness. Any reliance on this information is solely at your own risk.