

FOR LEASE

Kokomo Medical Office Park

2302-2350 S. Dixon Road, Kokomo, IN 46902



PROPERTY HIGHLIGHTS



- For Lease (Max. Contiguous: 17,704 SF):
 - NEW-TO-MARKET Medical Spec Suite: 3,095 SF
 - Suite 2312-225: 5,271 SF
 - Suite 2312-250: 9,338 SF
- Easy commute from Community Howard Regional Hospital and Ascension St. Vincent Hospital
- Professionally managed, multi-tenant medical office park
- Convenient, to-your-door parking
- Separate suite entrance for employees and providers



Kokomo Medical Office Park
2302-2350 S. Dixon Road
Kokomo, IN 46902



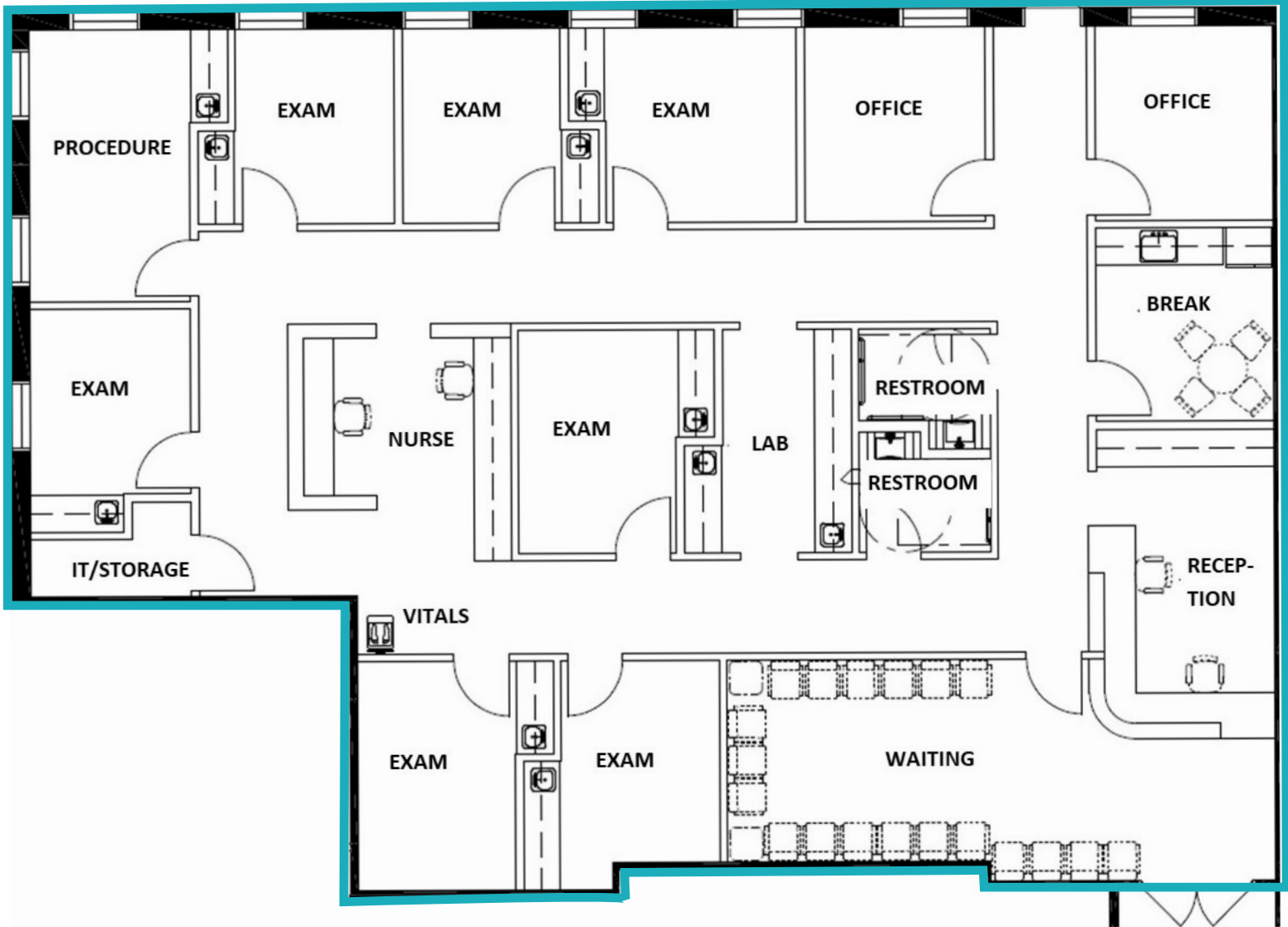
CONTACT

Charles Yeo, CCIM, CPM
SVP, Brokerage
317.288.9006
cyeo@cciin.com

Cornerstone Companies, Inc.
8902 N Meridian Street, Suite 205
Indianapolis, IN, 46260

NEW - TO - MARKET: MEDICAL SPEC SUITE COMING SOON!

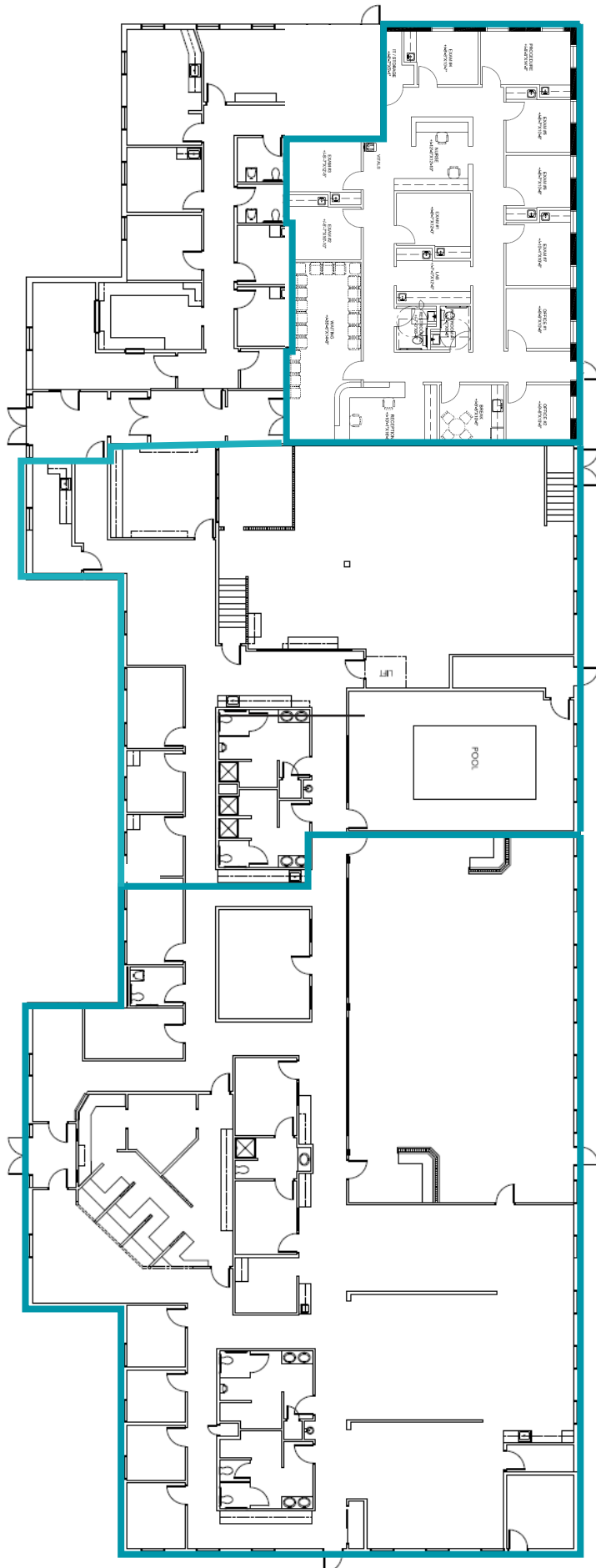
Medical Spec Suite:
3,095 SF



FLOOR PLAN



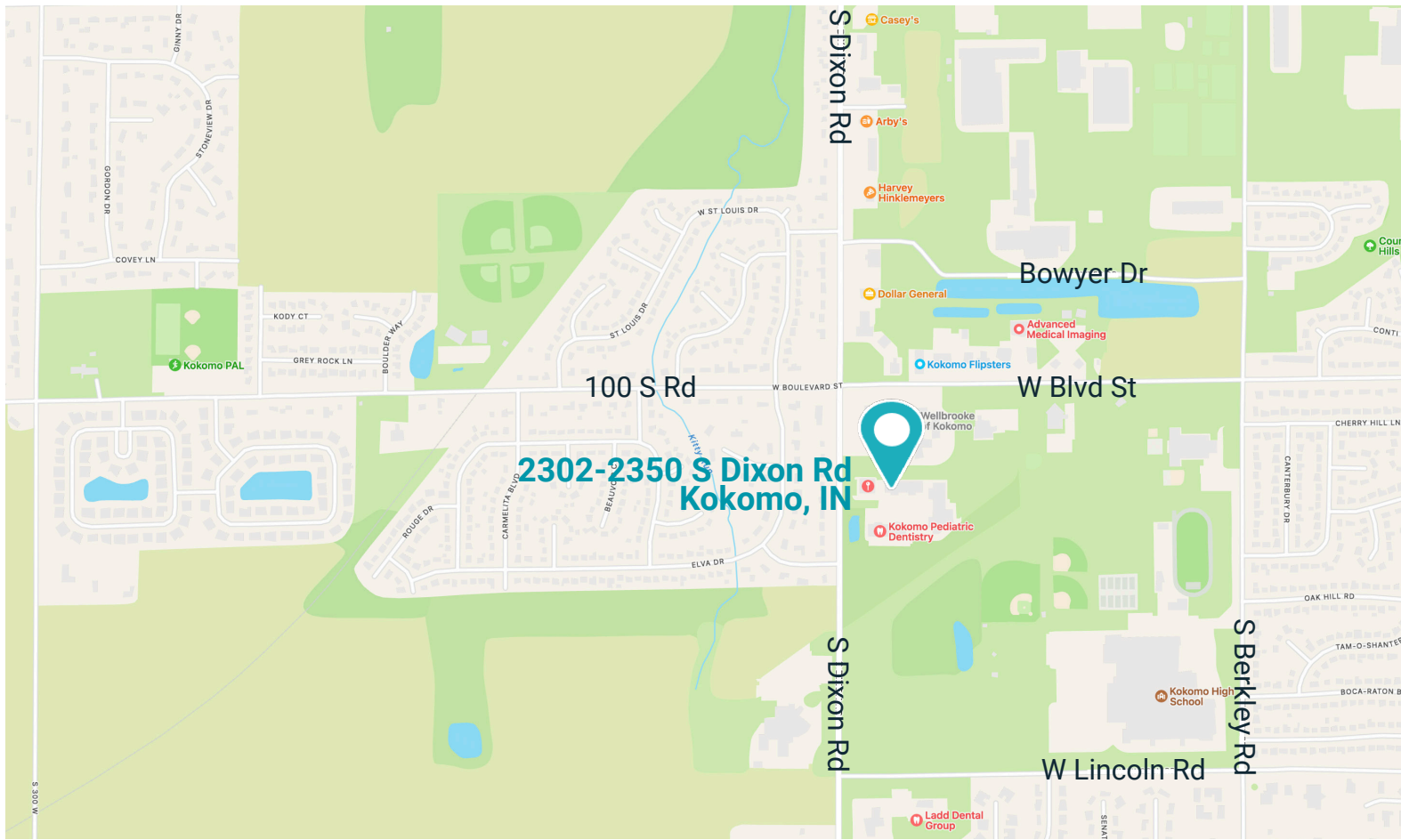
Total Contiguous:
17,704 SF



Medical Spec Suite:
3,095 SF

Suite 2312-225:
5,271 SF

Suite 2312-250:
9,338 SF



TRAFFIC COUNT

14,147 vehicles per day on South Dixon Road

DEMOGRAPHICS (5 - mile radius)



72,288

Population



40.4

Median Age



30,564

Households



\$70,839

Average Household Income



CONTACT

Charles Yeo, CCIM, CPM
 SVP, Brokerage
 317.288.9006
 cyeo@cciin.com



HEALTHCARE
 REALTY



CORNERSTONE

© 2024 Cornerstone Companies, Inc. All rights reserved. Although the information contained herein has been obtained from sources deemed reliable, Owner, Cornerstone Companies, Inc., and/or their representatives, brokers or agents make no representation or warranty as to its accuracy or completeness. Any reliance on this information is solely at your own risk.

