

FOR LEASE

Kokomo Medical Office Park


2302-2350 S. Dixon Road, Kokomo, IN 46902



PROPERTY HIGHLIGHTS



- For Lease:
 - Medical Spec Suite: 3,095 SF - includes \$3/SF moving allowance
 - Suite 2312-225: 3,619 SF
 - Suite 2330-315: 750 SF
 - Max. Contiguous: 6,714 SF
- Easy commute from Community Howard Regional Hospital and Ascension St. Vincent Hospital
- Professionally managed, multi-tenant medical office park
- Convenient, to-your-door parking
- Separate suite entrance for employees and providers
- Competitive tenant improvement allowance available

 **Kokomo Medical Office Park**
2302-2350 S. Dixon Road
Kokomo, IN 46902



CONTACT

Charles Yeo, CCIM, CPM
SVP, Brokerage
317.288.9006
cyeo@cciin.com

Cornerstone Companies, Inc.
8902 N Meridian Street, Suite 205
Indianapolis, IN, 46260

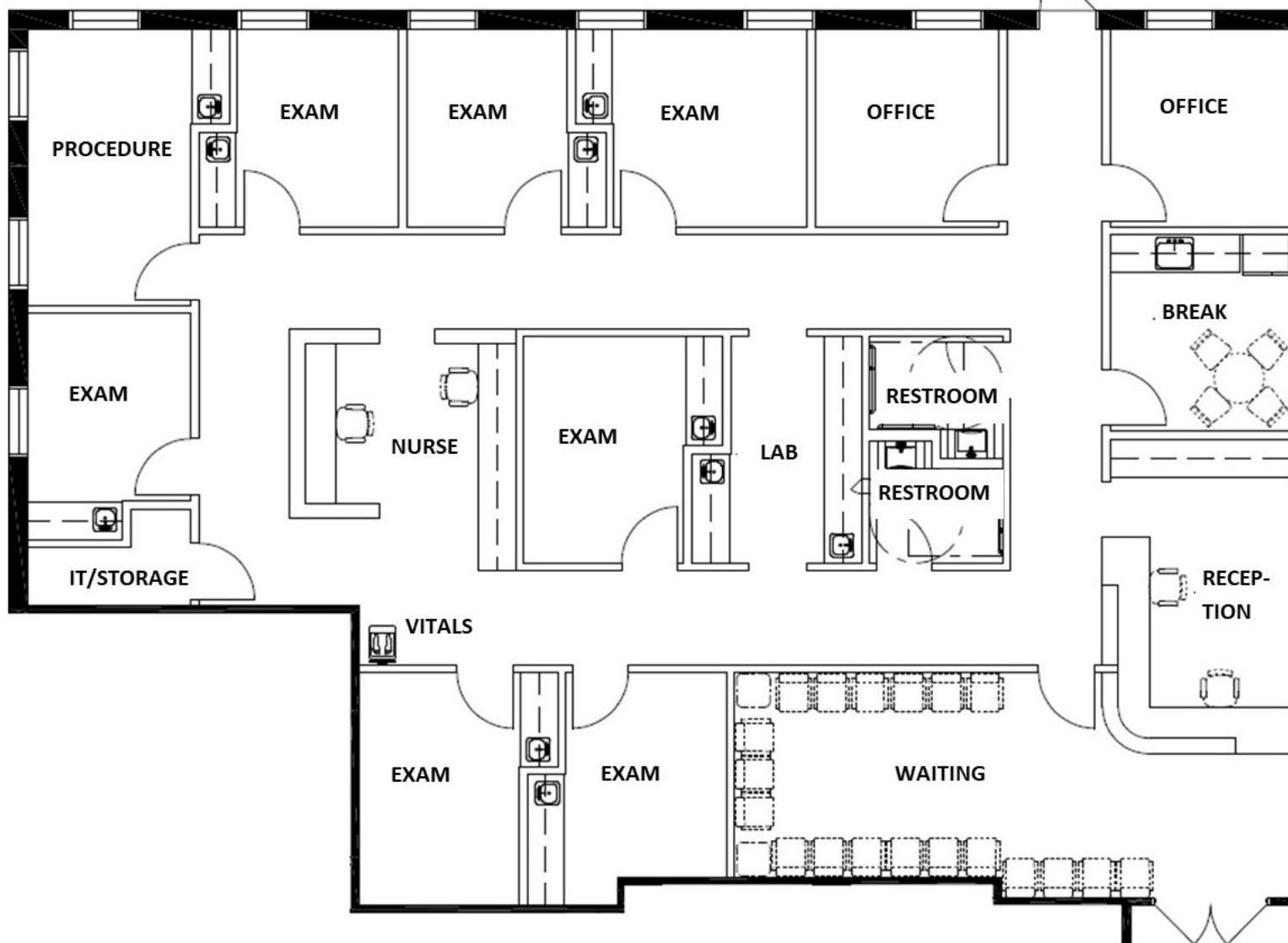
MEDICAL SPEC SUITE COMING SOON!

FLOOR PLAN

Medical Spec Suite

3,095 SF

\$3/SF Moving Allowance Included

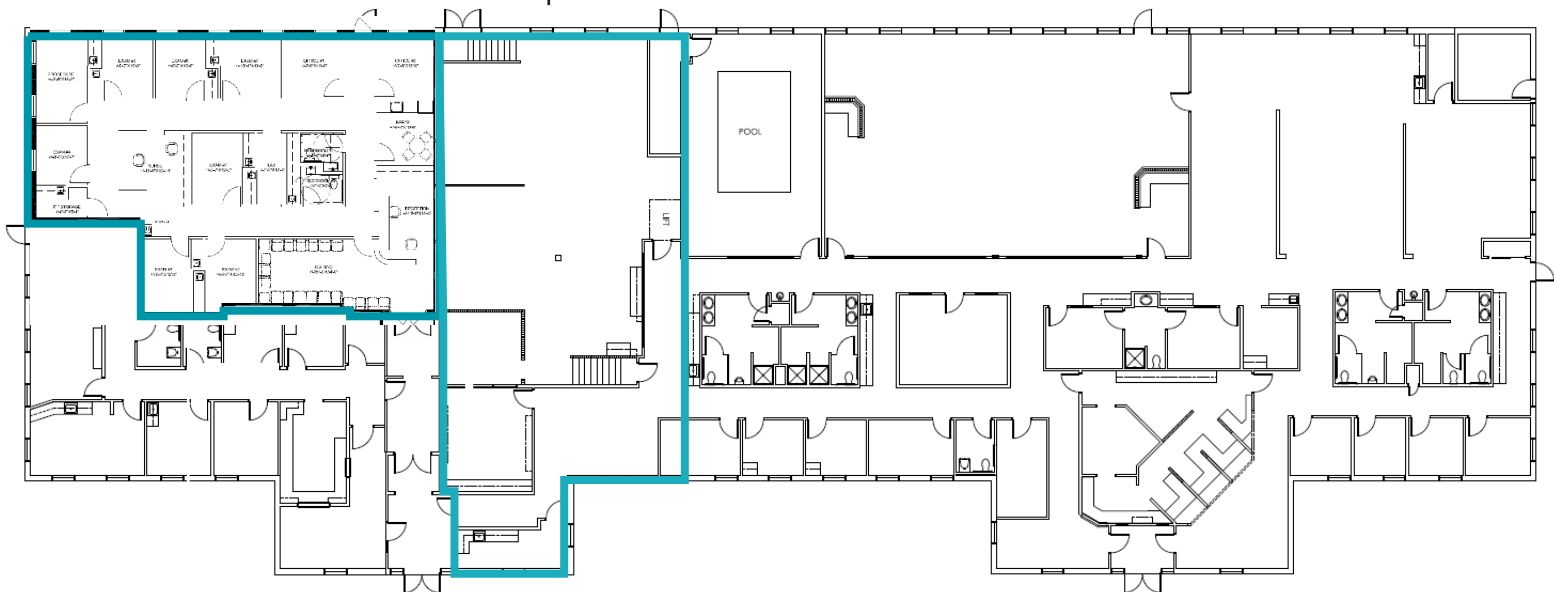


FLOOR PLAN

MAX. CONTIGUOUS:
6,714 SF

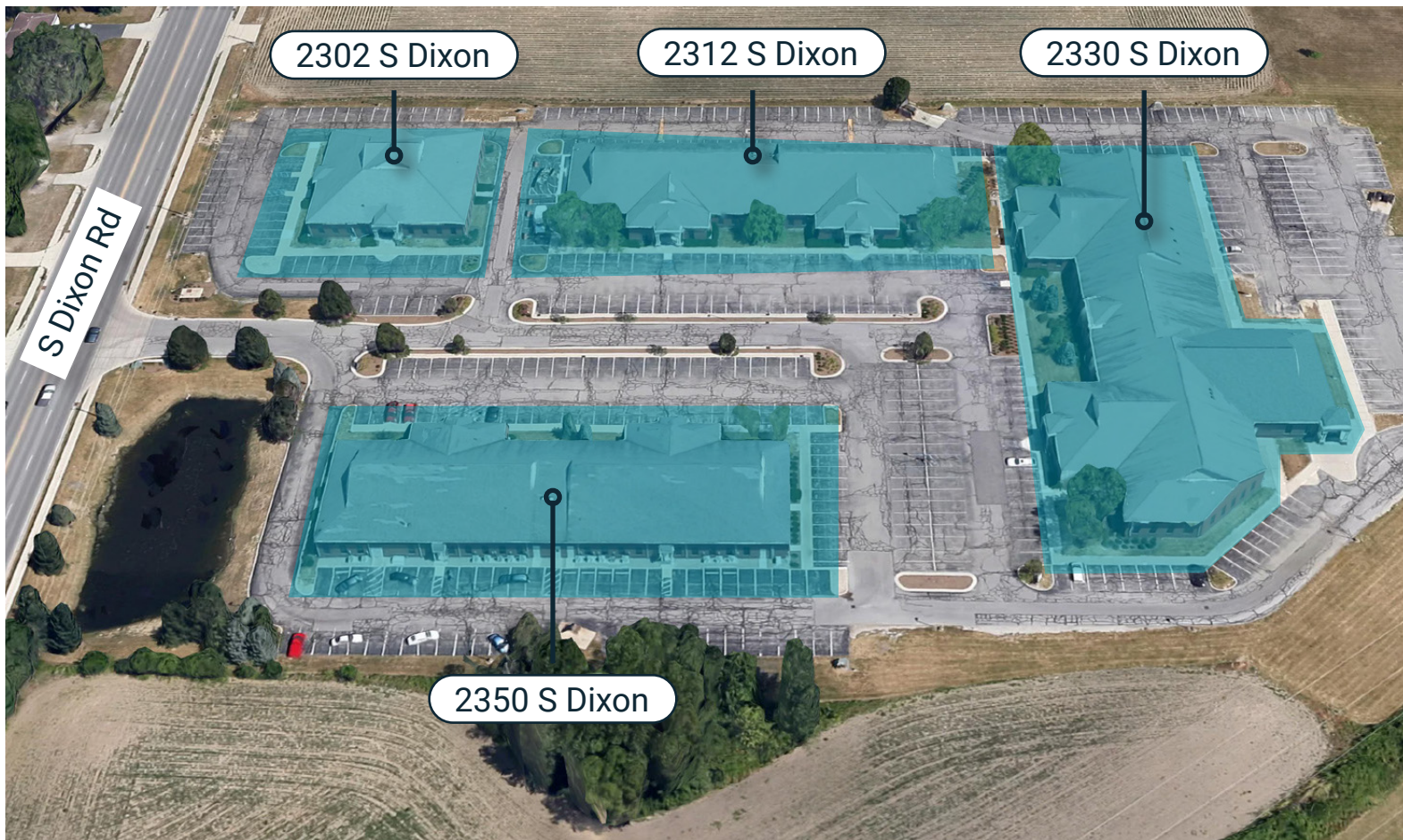
Medical Spec Suite
3,095 SF

Suite 2312-225
3,619 SF



Suite 2330-315:
750 SF





TRAFFIC COUNT

14,147 vehicles per day on South Dixon Road

DEMOGRAPHICS (5 - mile radius)



72,288

Population



40.4

Median Age



30,564

Households



\$70,839

Average
Household
Income

KOKOMO MEDICAL
OFFICE PARK



CONTACT

Charles Yeo, CCIM, CPM
SVP, Brokerage
317.288.9006
cyeo@ccim.com



HEALTHCARE
REALTY



CORNERSTONE

© 2024 Cornerstone Companies, Inc. All rights reserved. Although the information contained herein has been obtained from sources deemed reliable, Owner, Cornerstone Companies, Inc., and/or their representatives, brokers or agents make no representation or warranty as to its accuracy or completeness. Any reliance on this information is solely at your own risk.