

FOR LEASE

Kokomo Medical Office Park

2302-2350 S. Dixon Road, Kokomo, IN 46902



PROPERTY HIGHLIGHTS

- For Lease:
 - Suite 2312-250: 9,338 SF
 - Suite 2312-225: 8,366 SF
 - Max. contiguous: 17,704 SF
- Easy commute from Community Howard Regional Hospital and Ascension St. Vincent Hospital
- Professionally managed, multi-tenant medical office park
- Convenient, to-your-door parking
- Additional employee/provider entrance in rear



Kokomo Medical Office Park
2302-2350 S. Dixon Road
Kokomo, IN 46902



CONTACT

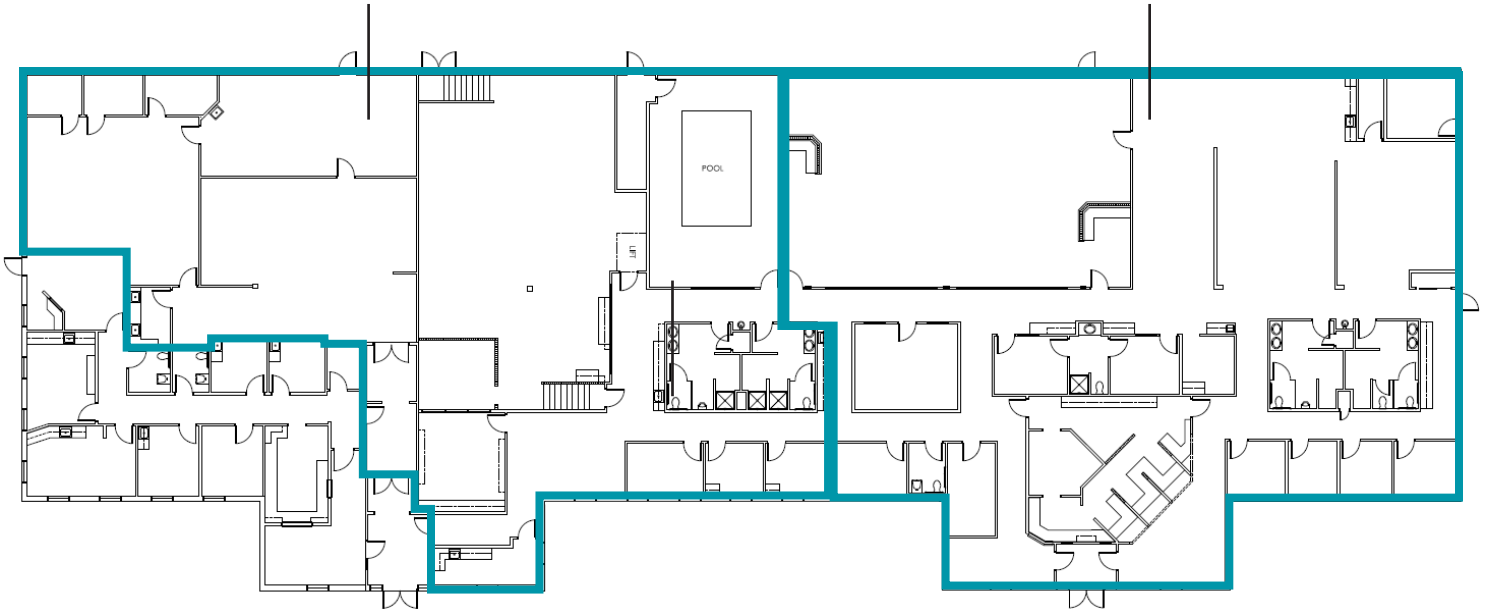
Charles Yeo, CCIM, CPM
SVP, Brokerage
317-288-9006
cyeo@cciin.com

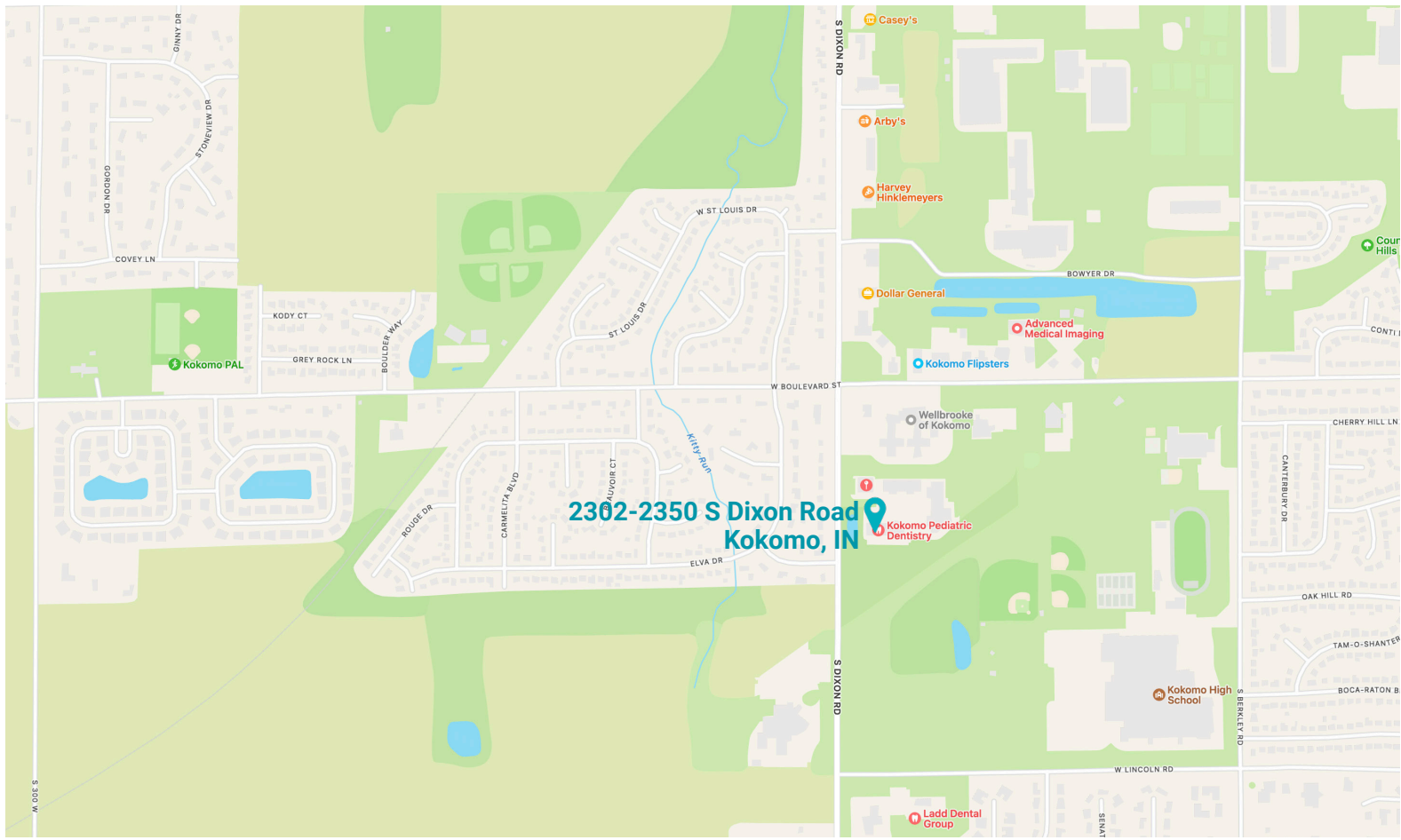
Cornerstone Companies, Inc.
8902 N Meridian Street, Suite 205
Indianapolis, IN, 46260

FLOOR PLAN

Suite 2312-225:
8,366 SF

Suite 2312-250:
9,338 SF








TRAFFIC COUNT


14,147 vehicles per day on South Dixon Road

DEMOGRAPHICS (5 - mile radius)

 72,288
Population

 40.4
Median Age

 30,564
Households

 \$52,689
Median Household Income



CONTACT

Charles Yeo, CCIM, CPM
SVP, Brokerage
317-288-9006
cyeo@cciin.com



© 2022 Cornerstone Companies, Inc. All rights reserved. Although the information contained herein has been obtained from sources deemed reliable, Owner, Cornerstone Companies, Inc., and/or their representatives, brokers or agents make no representation or warranty as to its accuracy or completeness. Any reliance on this information is solely at your own risk.