

FOR LEASE

53 & 57 Physicians Drive NW
Supply, NC 28462



PROPERTY DETAILS



- 1.69-acre site in Brunswick County



- Two lots available

- Lot 1: 0.89 AC

- Lot 2: 0.80 AC



- 12,500 SF build-to-suit opportunity



- Lots are part of a seven lot subdivision located one mile from

Novant Hospital directly off HWY 17



- Area is referred to as the Brunswick Medical Mile due to close proximity to Novant Health Hospital



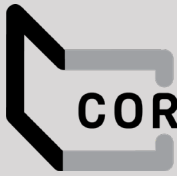
- High visibility with 400 feet of frontage on HWY 17



CONTACT

Andrew Lawler
Regional Partner (NC)
704.942.1954
alawler@cciin.com

HQ: Cornerstone Companies, Inc.
8902 N Meridian Street, Suite 205
Indianapolis, IN | 317.841.9900
cornerstonecompaniesinc.com



CORNERSTONE

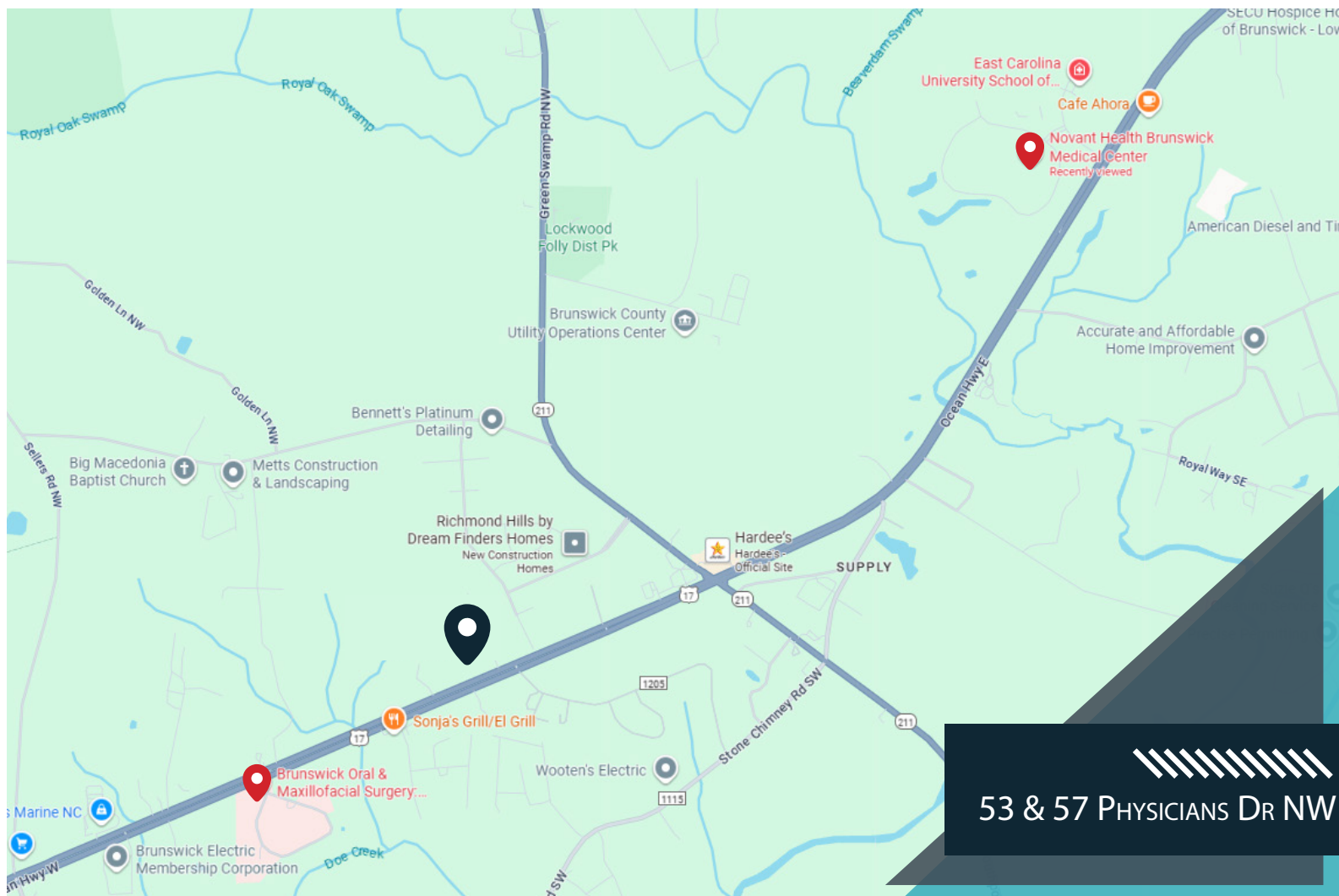
Site Plan

53 & 57 Physicians Drive NW
Supply, NC 28462



2 Spaces Available





DEMOGRAPHICS

(3 - mile radius)



3,680
Population



45.3
Median Age



1,493
Households



\$39,052
Median Disposable Income



\$49,691
Median Household Income



CORNERSTONE



CONTACT

Andrew Lawler
Regional Partner (NC)
704.942.1954
alawler@cciin.com

Cornerstone Companies, Inc.
8902 N Meridian Street, Suite 205
Indianapolis, IN 46260