



# FOR SUBLEASE

## PROPERTY HIGHLIGHTS:

- 2,104 RSF for sublease
- Current lease expires 6/30/2026
- Located on the Franciscan Health Indianapolis campus
- Ample parking
- Rental rate negotiable

8051 S EMERSON AVENUE  
INDIANAPOLIS, IN 46237

## CONTACT:

---

Ross Goyer  
Senior Vice President  
317-288-9011  
rgoyer@cciin.com

## CORNERSTONE COMPANIES, INC.

---

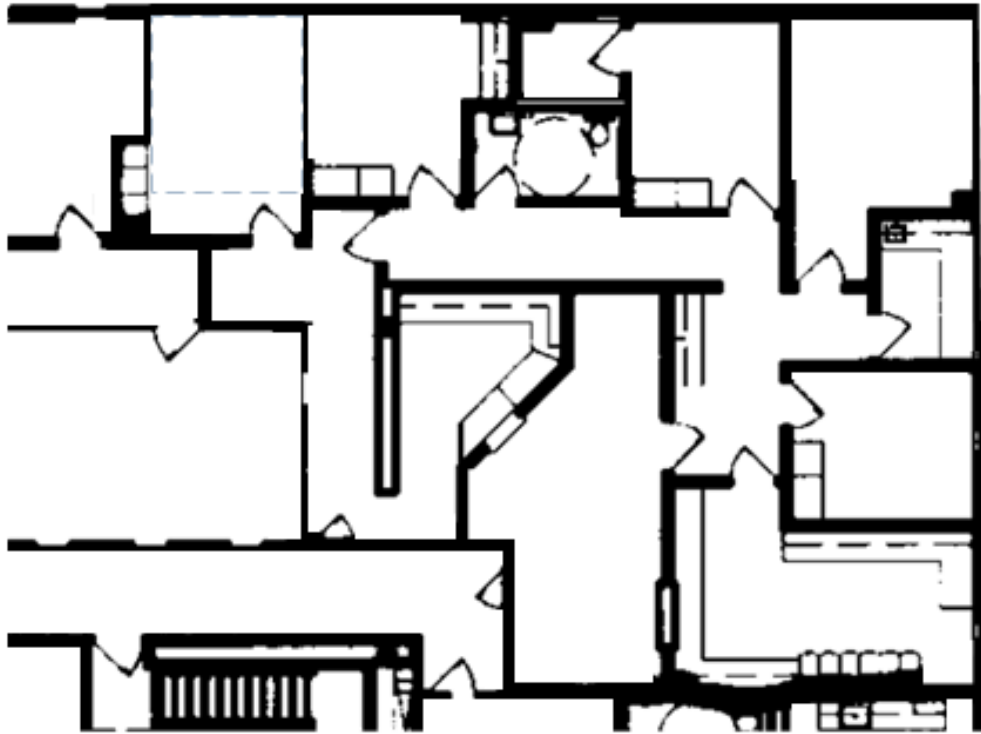
8902 N Meridian Street  
Suite 205  
Indianapolis, IN 46260



For more, visit: [CornerstoneCompaniesInc.com](http://CornerstoneCompaniesInc.com)

# FLOOR PLAN

SUITE 480  
2,104 RSF

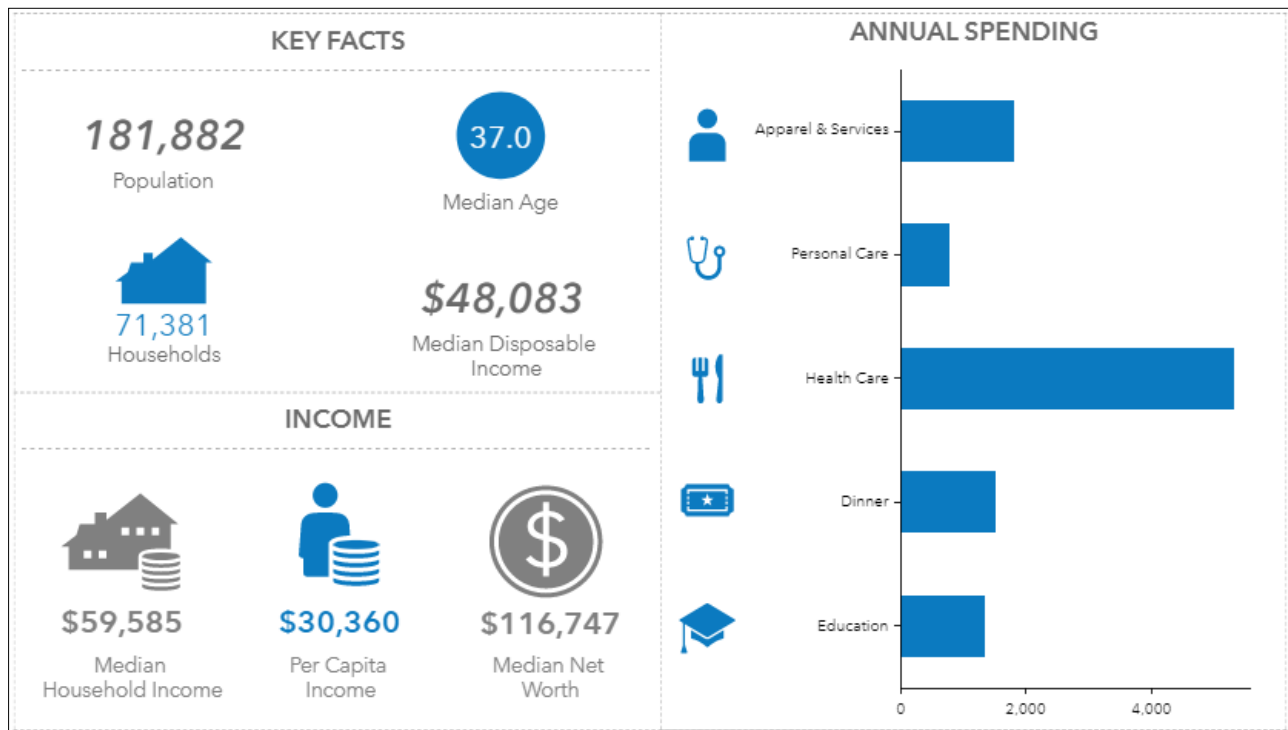


For more, visit: [CornerstoneCompaniesInc.com](http://CornerstoneCompaniesInc.com)

# LOCATION



# DEMOGRAPHICS



For more, visit: [CornerstoneCompaniesInc.com](http://CornerstoneCompaniesInc.com)