

MEDICAL OFFICE SPACE FOR LEASE



CENTER GROVE MEDICAL PAVILION

1777 STONES CROSSING ROAD W | GREENWOOD, IN

PROPERTY HIGHLIGHTS:

- 15,055 RSF available for lease
- Common corridors provide efficiently divided space
- Quickly developing medical hub
- Electronic pylon and building signage available
- Highly desirable location—hard corner of Stones Crossing Road W and N State Road 135—Center Grove's most prominent intersection
- Abundance of area amenities including retail, restaurants, and lodging—less than 15 minutes from Greenwood Park Mall
- Located less than 10 miles from I-465 and I-65
- 23,468 Average Annual Daily Traffic

CONTACT:

Charles Yeo, CPM

Vice President

317.288.9006

cyeo@cciin.com

CORNERSTONE COMPANIES, INC

8902 N. Meridian Street, Suite 205

Indianapolis, IN 46260

Leasing Agent



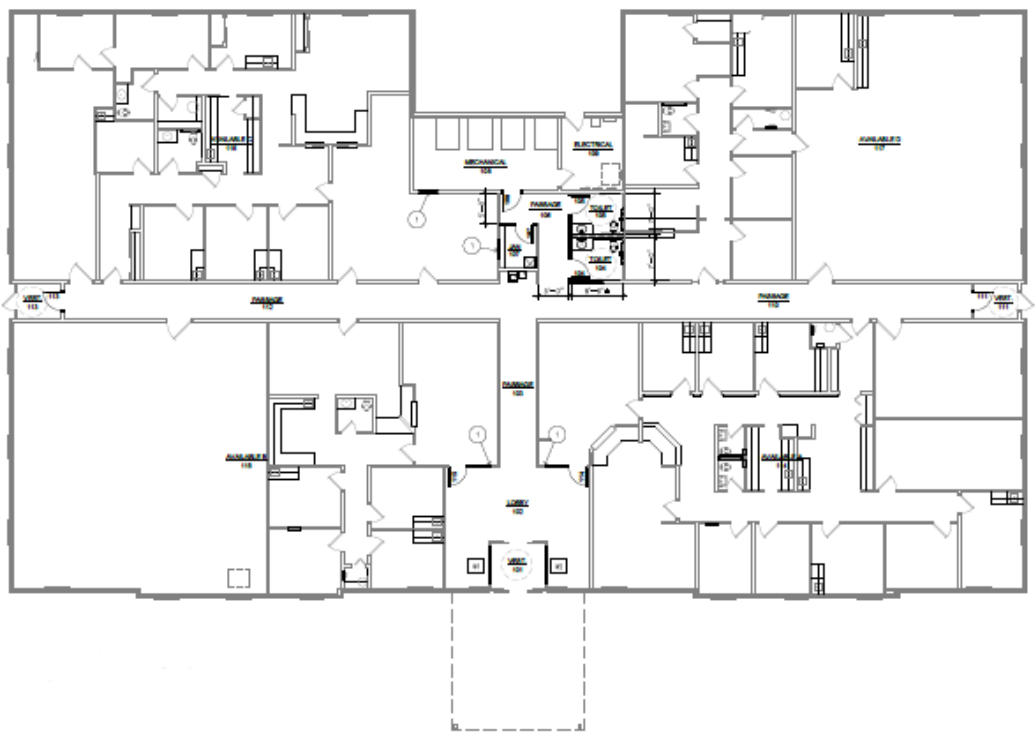
Owner



For more, visit: CornerstoneCompaniesInc.com

FLOOR PLAN AND MAP

Available: Approx. 15,055 RSF



Average Household Income



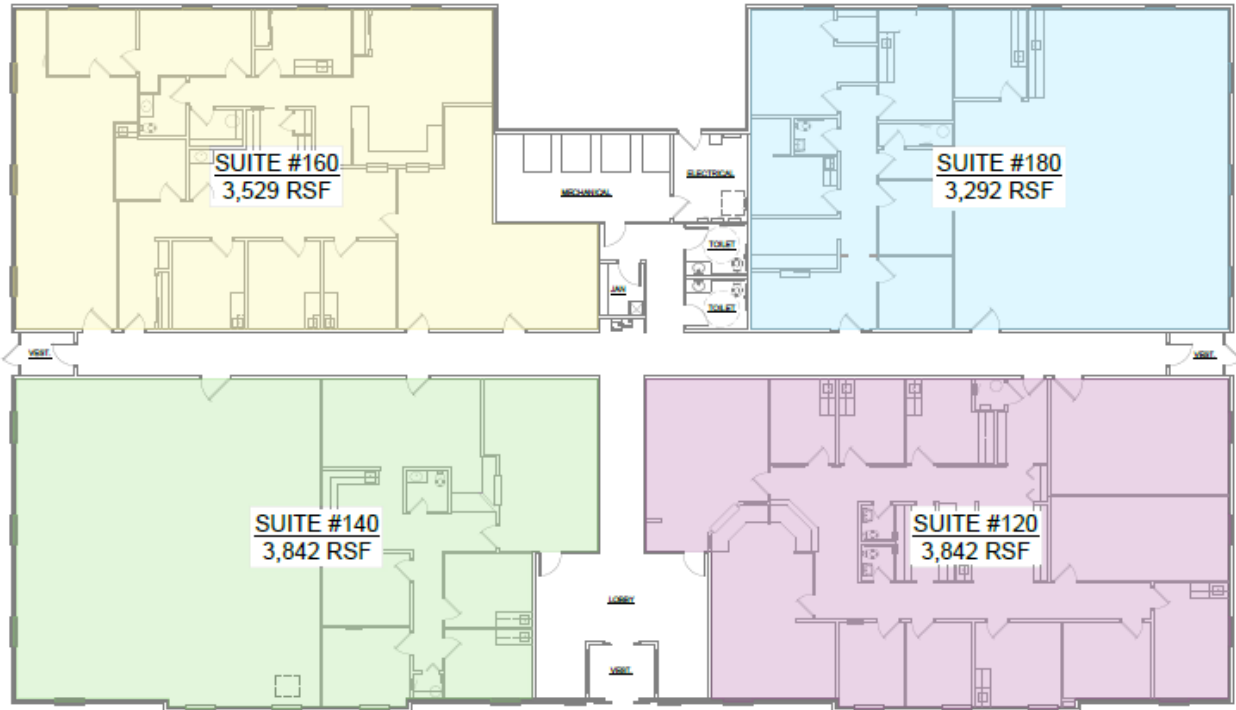
Electronic Pylon Signage



For more, visit: CornerstoneCompaniesInc.com

PROPOSED FLOOR PLANS

OPTION 1:



OPTION 2:



For more, visit: CornerstoneCompaniesInc.com