



# FOR LEASE

## PROPERTY HIGHLIGHTS:

- Building Size: 61,263 SF
- Up to 26,967 SF available
- Located in close proximity to Prisma Health's Greenville Memorial Medical Campus
- Ambulatory Surgery Center in building with possible partnerships/participation in the surgery center for qualified surgeons
- Easy access to I-185/US 29 via the Henrydale Avenue intersection
- New construction, first generation space—build to suit tenant's specifications
- Perfect health care setting in the core of Greenville's medical corridor

5 STEVENS STREET  
GREENVILLE, SC 29605

## CONTACT:

Charles J. Yeo, CCIM, CPM  
Vice President  
(317) 288-9006  
cyeo@cciin.com

## CORNERSTONE COMPANIES, INC.

8902 N Meridian Street  
Suite 205  
Indianapolis, IN 46260



CornerstoneCompaniesInc.com

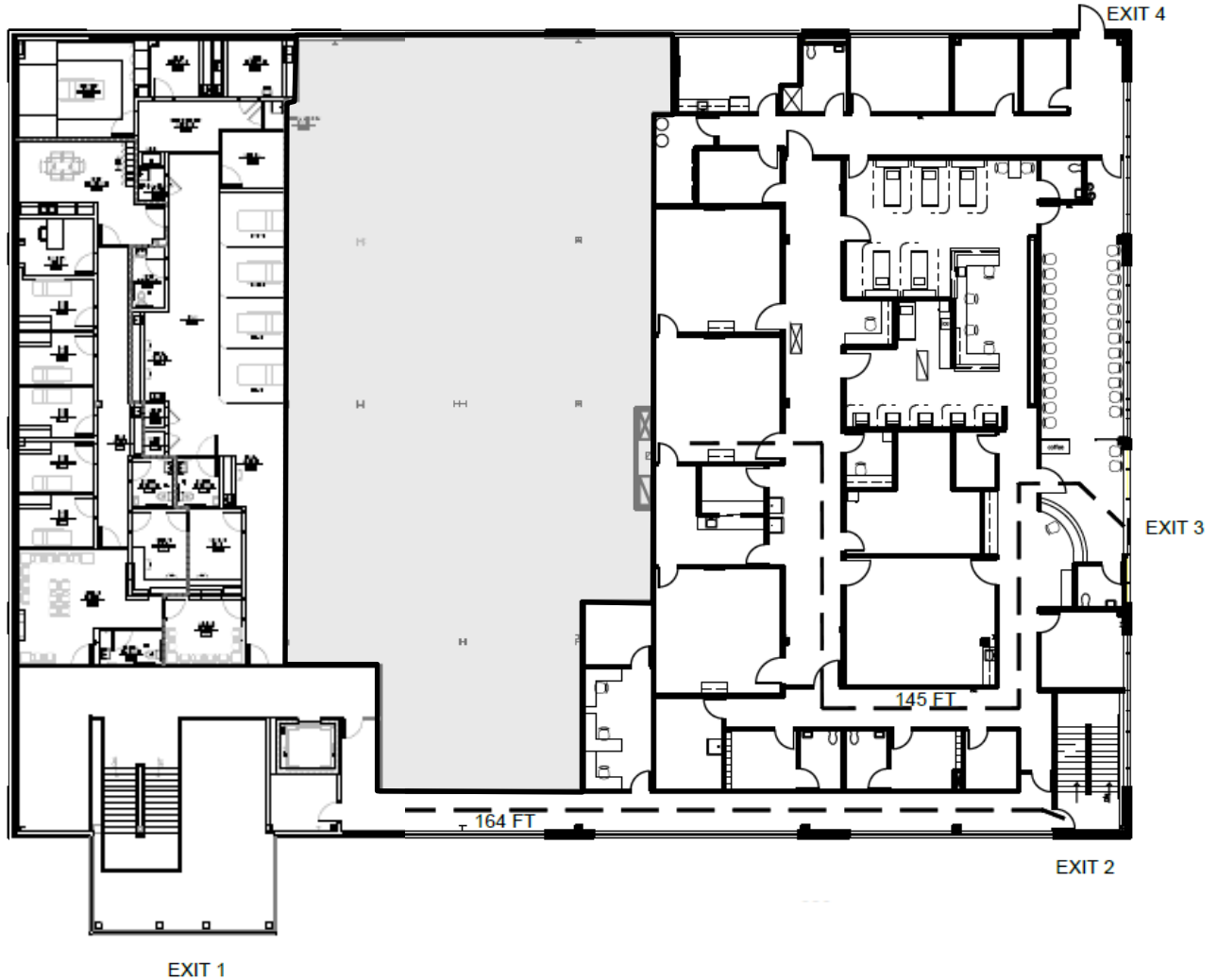
# FLOOR PLAN



## **2ND FLOOR**

SUITE 250:  
6,546 RSF

*Available Immediately*

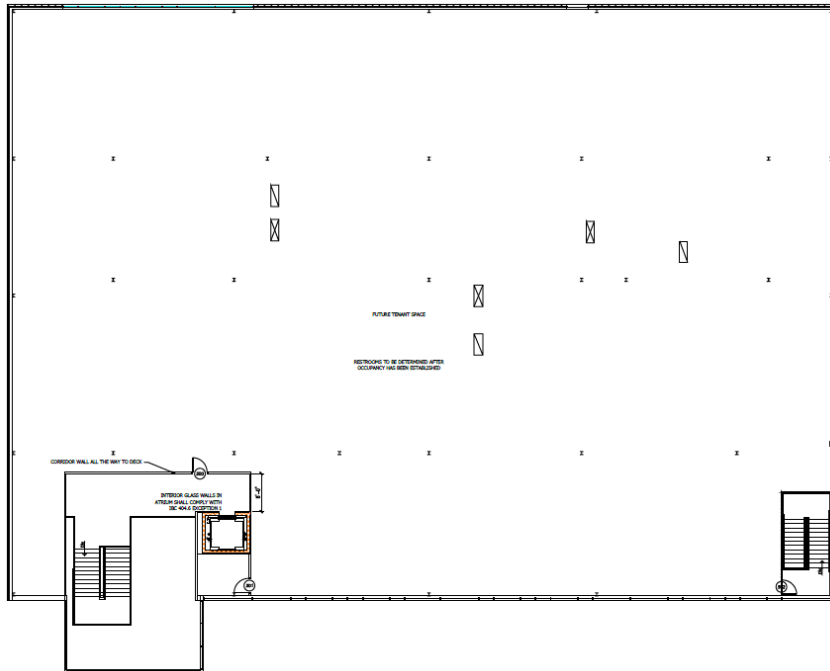


# FLOOR PLAN

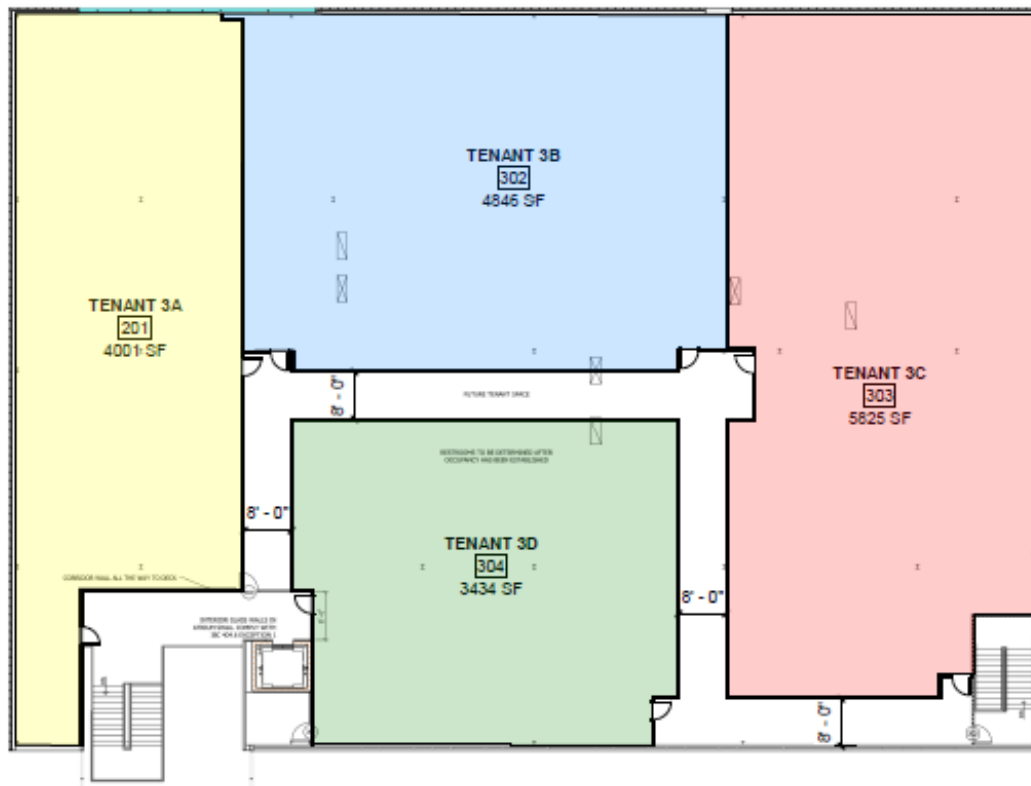
## **3RD FLOOR**

SUITE 300:  
20,421 RSF

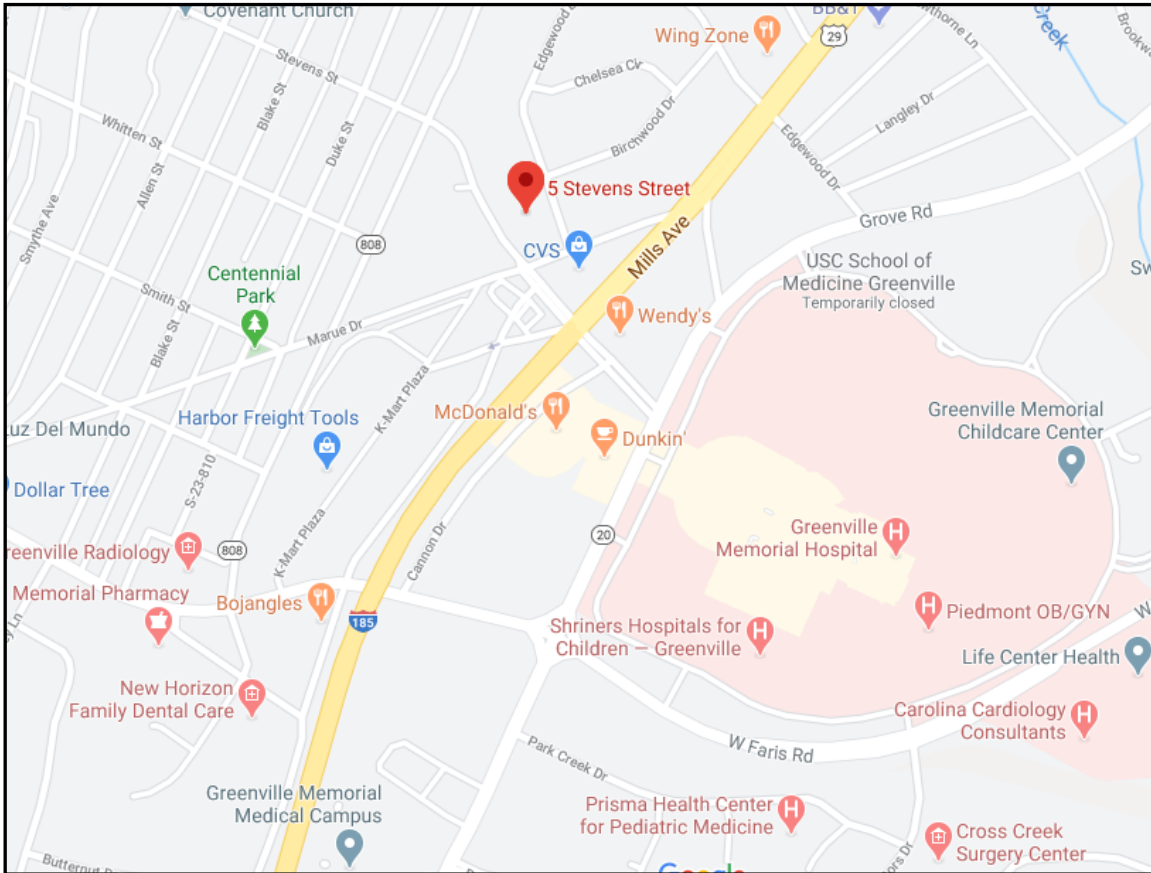
*Available Immediately*



## PROPOSED FLOOR PLAN



# LOCATION



# SITE PLAN

