

# FOR LEASE

5 Stevens Street  
Greenville, SC 29605



## PROPERTY DETAILS



- Building Size: 61,263 SF
- Up to 26,967 SF available



- Located in close proximity to Prisma Health's Greenville Memorial Medical Campus



- Ambulatory Surgery Center in building with possible partnerships/participation in the surgery center for qualified surgeons



- Easy access to I-185/US 29 via the Henrydale Avenue intersection



- New construction, first generation space — build to suit tenant's specifications



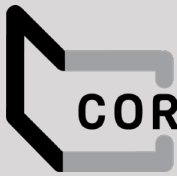
- Perfect health care setting in the core of the Greenville's medical corridor



## CONTACT

Charles J. Yeo, CCIM, CPM  
Senior Vice President, Brokerage  
317.288.9006  
cyeo@cciiin.com

HQ: Cornerstone Companies, Inc.  
8902 N Meridian Street, Suite 205  
Indianapolis, IN | 317.841.9900  
cornerstonecompaniesinc.com



CORNERSTONE

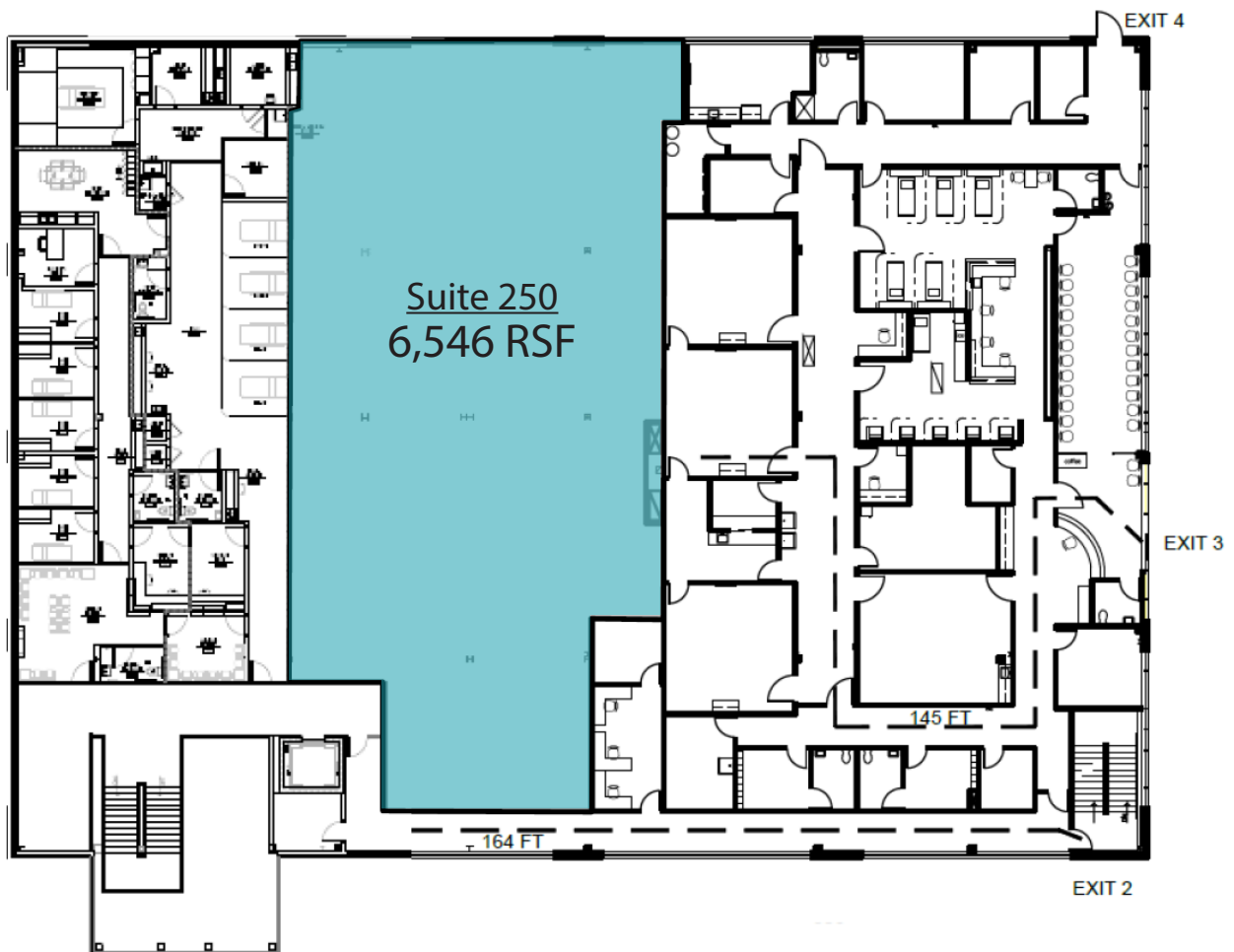
# FLOOR PLAN

5 Stevens Street  
Greenville, SC 29605



Suite Available | 6,546 RSF

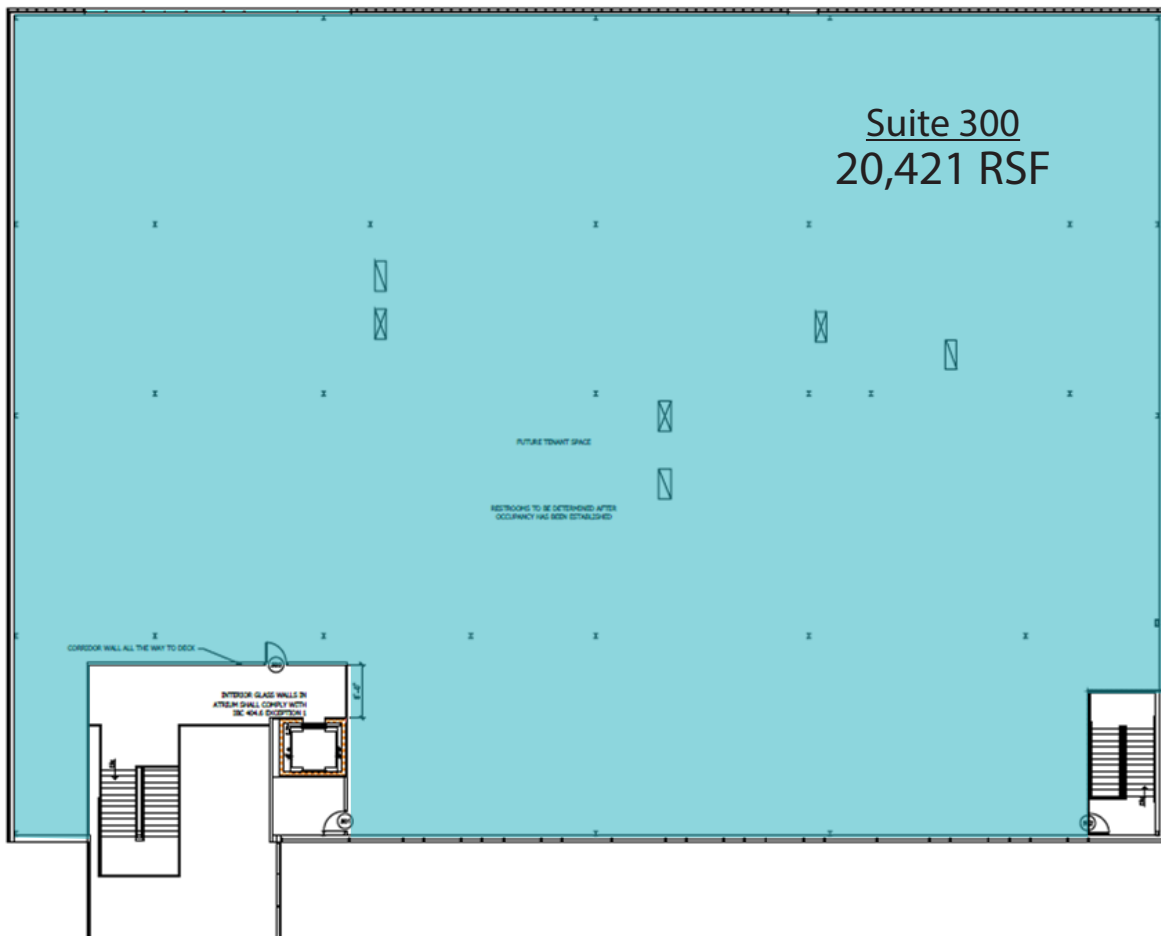
## 2nd Floor



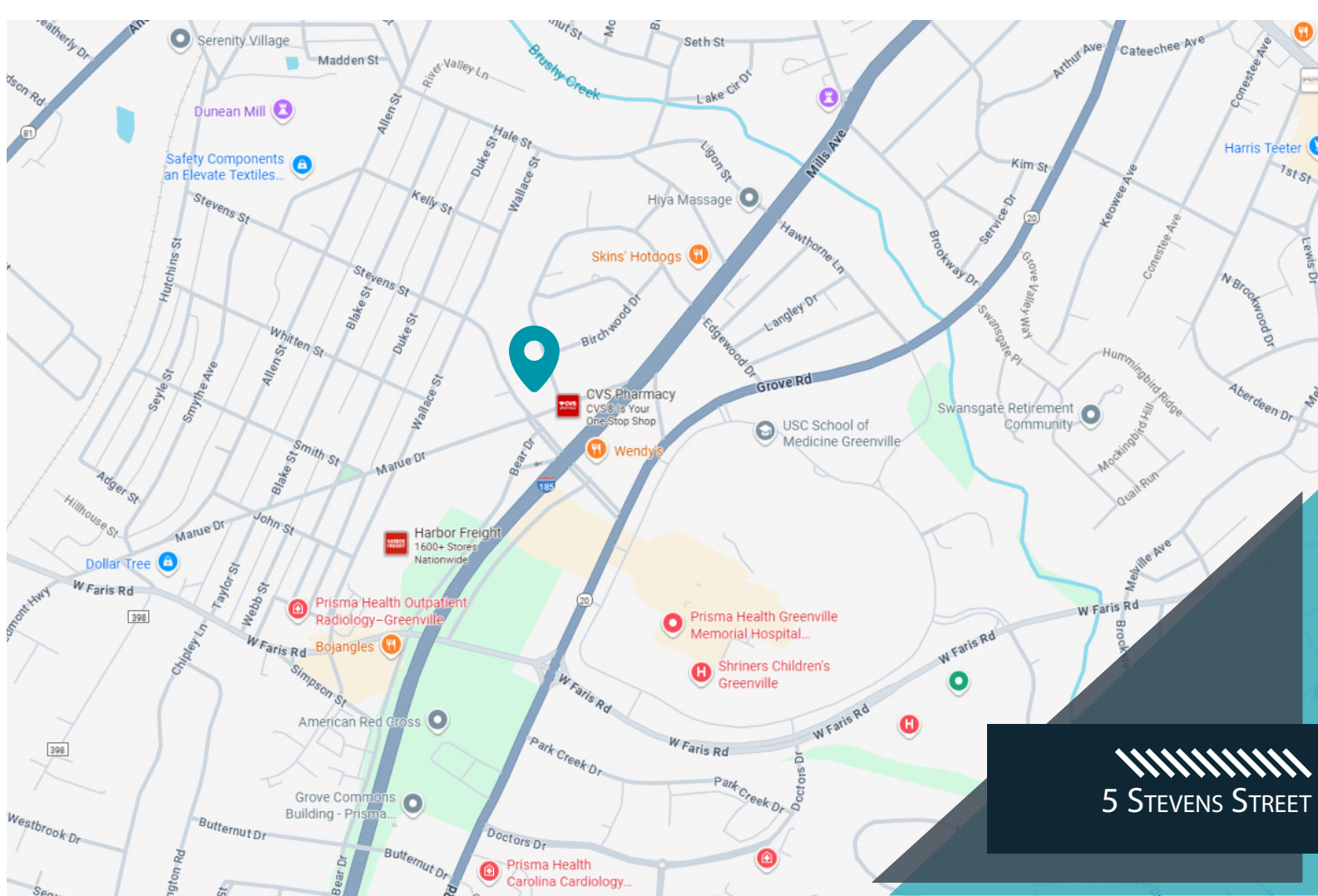


Suite Available | 20,421 RSF

## 3rd Floor







5 STEVENS STREET

## DEMOGRAPHICS

(3 - mile radius)



70,164  
Population



37.5  
Median Age



30,283  
Households



\$51,442  
Median Household Income



\$88,683  
Average Household Income



CORNERSTONE



## CONTACT

Charles J. Yeo, CCIM, CPM  
Senior Vice President, Brokerage  
317.288.9006  
cyeo@cciin.com

Cornerstone Companies, Inc.  
8902 N Meridian Street, Suite 205  
Indianapolis, IN 46260