



BROKER BONUS:

Additional .5% commission for any prospect under 5,000 SF
and an additional 1% for any prospect over 5,000 SF

MEDICAL OFFICE SPACE FOR LEASE

6855 SHORE TERRACE INDIANAPOLIS, IN 46254

PROPERTY HIGHLIGHTS:

- Building Size: 45,437 SF
- 26,747 RSF Available For Lease
- Max contiguous: 16,384 RSF
- Min divisible: 2,000 RSF
- Located at 38th Street & I-465
- Only half a mile from Methodist Medical Plaza, IU Health Physicians Primary Care and Rehabilitation Hospital of Indiana
- 2 miles from Eskenazi Health Center
- High-traffic residential area with easy access to I-465
- Large floor plates available
- Light, open, 2-story Atrium
- Ample parking
- Modern aesthetic

CONTACTS:

Charles J. Yeo, CCIM, CPM
Vice President
317-288-9006
CYeo@cciin.com

Bill McClamroch
Brokerage Associate
317.919.2992
BMcClamroch@cciin.com

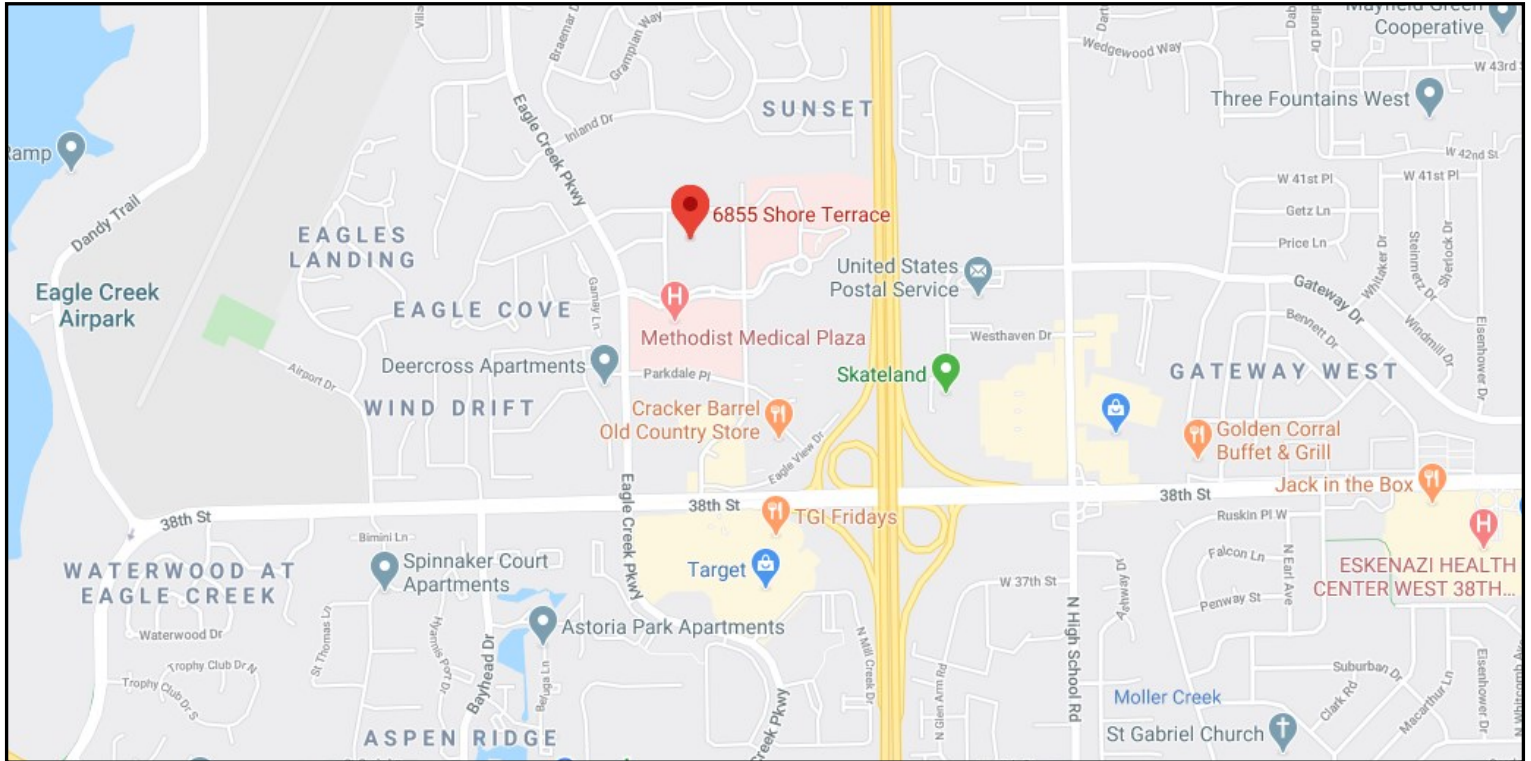
CORNERSTONE COMPANIES, INC.

8902 N Meridian Street
Suite 205
Indianapolis, IN 46260



SHORE TERRACE
MEDICAL CENTER

LOCATION



CornerstoneCompaniesInc.com

SHORE TERRACE
MEDICAL CENTER

ShoreTerraceMedicalCenter.com

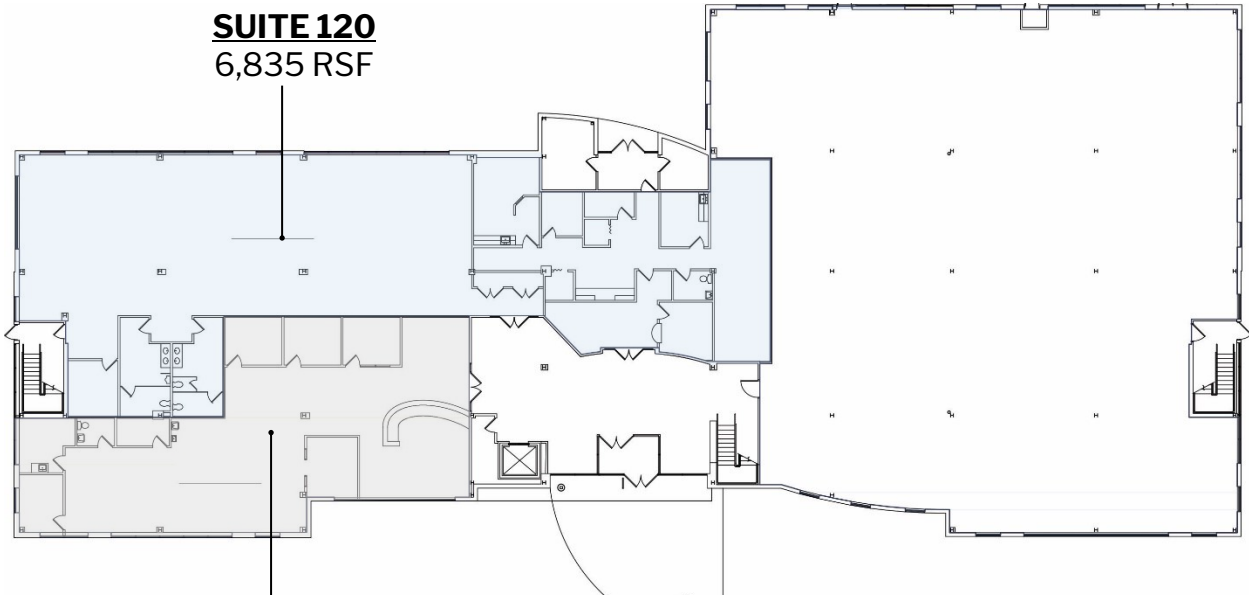
FLOOR PLAN

1ST FLOOR



Click available suites below for a virtual tour

SUITE 120
6,835 RSF



SUITE 130
3,528 RSF



CornerstoneCompaniesInc.com

SHORE TERRACE
MEDICAL CENTER

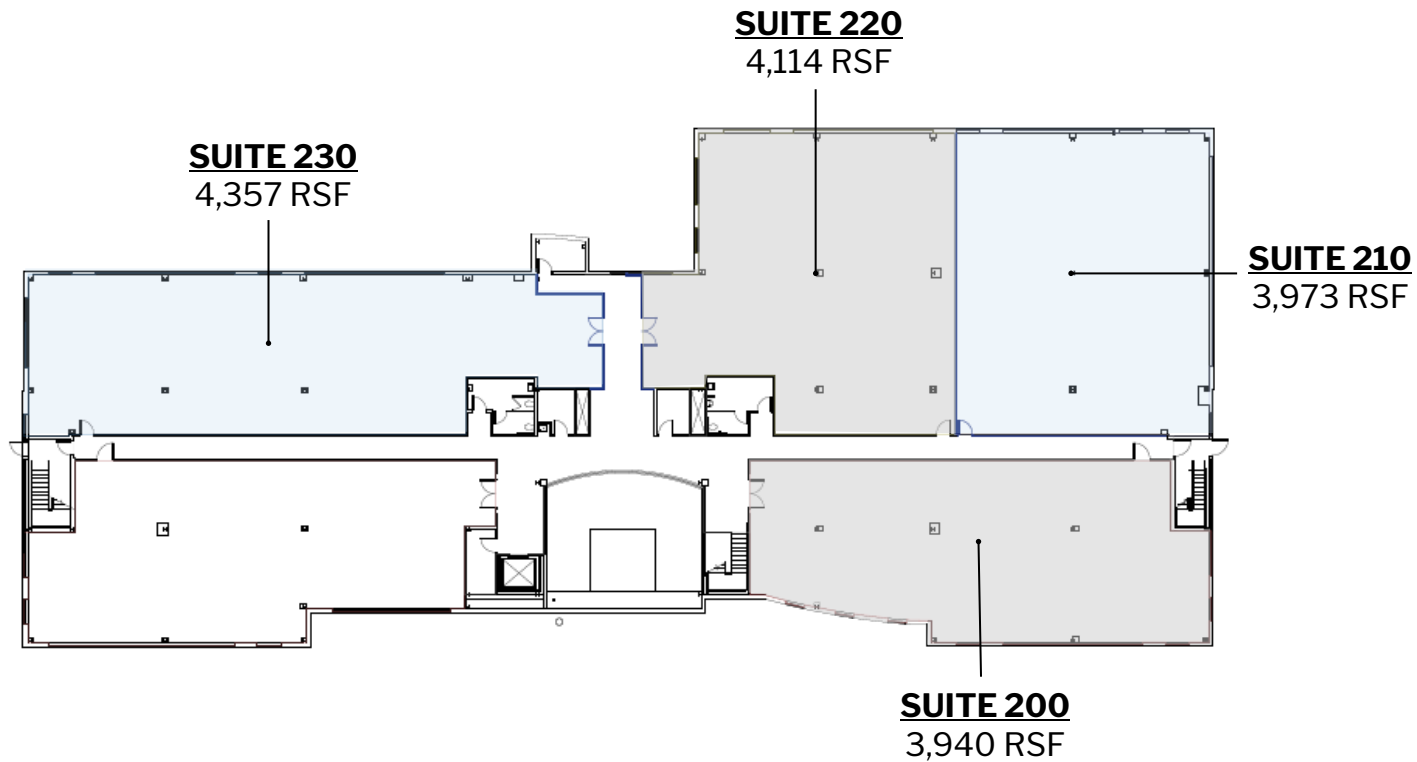
ShoreTerraceMedicalCenter.com

FLOOR PLAN

2ND FLOOR



Click available suites below for a virtual tour



CornerstoneCompaniesInc.com

SHORE TERRACE
MEDICAL CENTER

ShoreTerraceMedicalCenter.com