



# FOR LEASE

## PROPERTY HIGHLIGHTS:

- 34,040 RSF Medical Office Space Available
- Conveniently located on East Liberty Street/  
US Highway 60 and near S. Floyd Street
- Easy access to/from I-65
- Minutes from Jewish Hospital and Norton  
Children's Hospital

## AVAILABLE SUITES:

MIN. DIVISIBLE: 1,216 RSF | MAX. CONTIGUOUS: 9,871 SF

- |                          |                           |
|--------------------------|---------------------------|
| • <u>200</u> : 1,435 RSF | • <u>902</u> : 3,462 RSF  |
| • <u>301</u> : 3,435 RSF | • <u>905</u> : 1,184 RSF  |
| • <u>400</u> : 3,311 RSF | • <u>909</u> : 2,586 RSF  |
| • <u>602</u> : 4,525 RSF | • <u>1001</u> : 5,604 RSF |
| • <u>714</u> : 3,015 RSF | • <u>1005</u> : 4,267 RSF |
| • <u>801</u> : 1,216 RSF |                           |

## KENTUCKYONE HEALTH MEDICAL PLAZA II

250 E LIBERTY STREET  
LOUISVILLE, KY 40202

## CONTACT:

Callie Gray  
Brokerage Associate  
502.890.2043  
[CGray@CornerstoneCompaniesInc.com](mailto:CGray@CornerstoneCompaniesInc.com)

## CORNERSTONE COMPANIES, INC

250 E Liberty Street, Suite 714  
Louisville, KY 40202



PHYSICIANS REALTY TRUST



CORNERSTONE

For More, Visit: [CornerstoneCompaniesInc.Com](http://CornerstoneCompaniesInc.Com)

# BUILDING OVERVIEW

## KENTUCKY ONE MEDICAL PLAZA II

KentuckyOne Medical Plaza II is a 98,933 RSF facility located at 250 E. Liberty Street in Louisville, Kentucky. Louisville is the largest city in Kentucky and home to the annual Kentucky Derby. Louisville is also home to the University of Louisville. Other key economic sectors include health care, medical sciences and whiskey distillation.

This property is located less than 1 mile from the heart of downtown Louisville and less than 10 minutes from the Louisville International Airport. Situated directly off of Interstate 65, this location is easily accessible to both patients and staff. Its high degree of visibility from I-65 and competitive lease terms make this a prime site for medical practices.

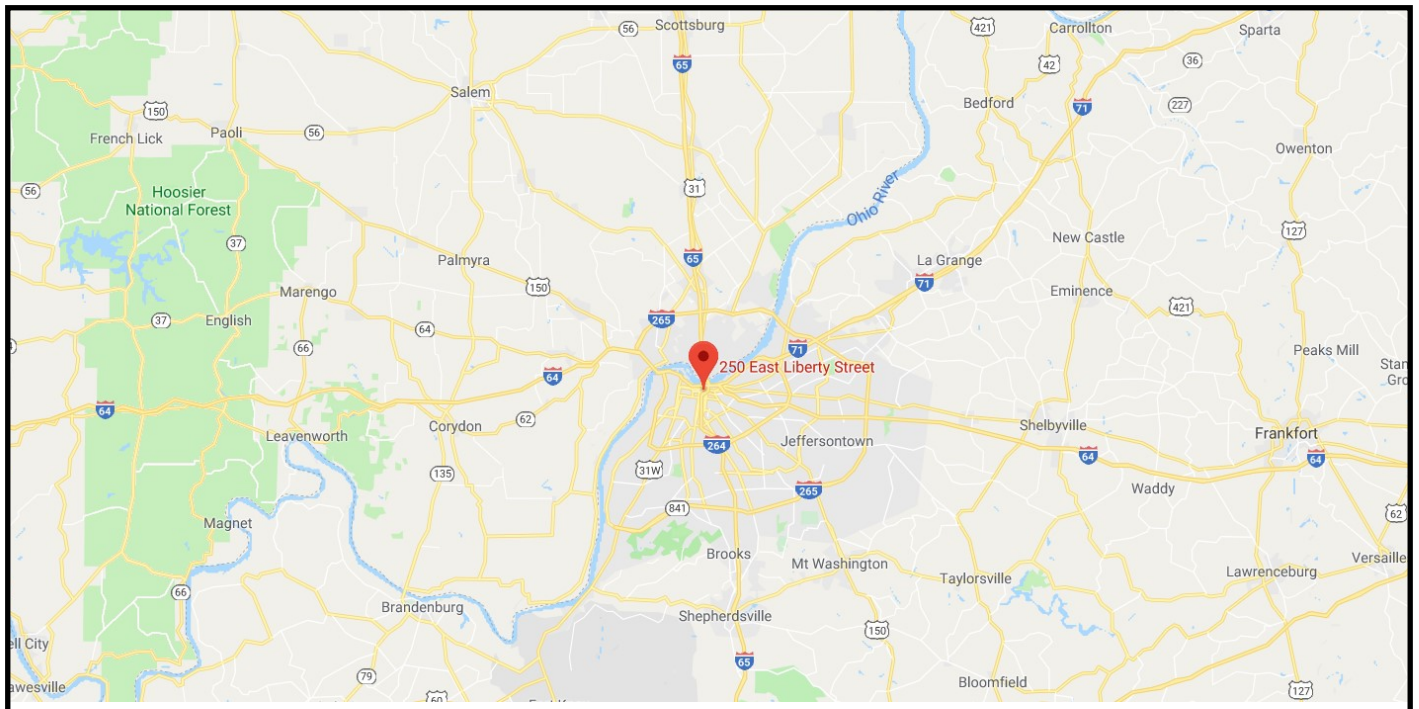
### NEARBY HOSPITAL SYSTEMS:

- JEWISH HOSPITAL (.3 MILES)
- NORTON CHILDREN'S HOSPITAL (.5 MILES)
- NORTON HOSPITAL (.6 MILES)
- UNIVERSITY OF LOUISVILLE SCHOOL OF MEDICINE (1 MILE)



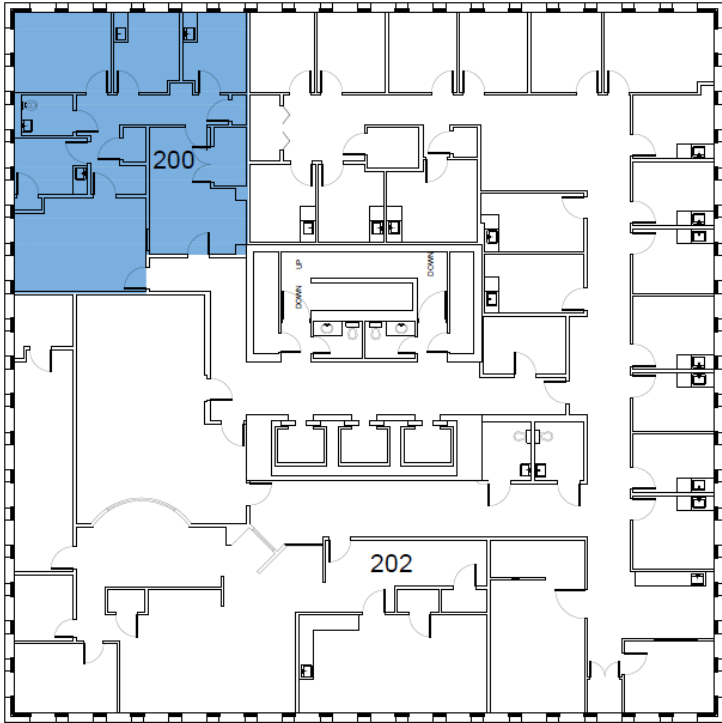


# LOCATION

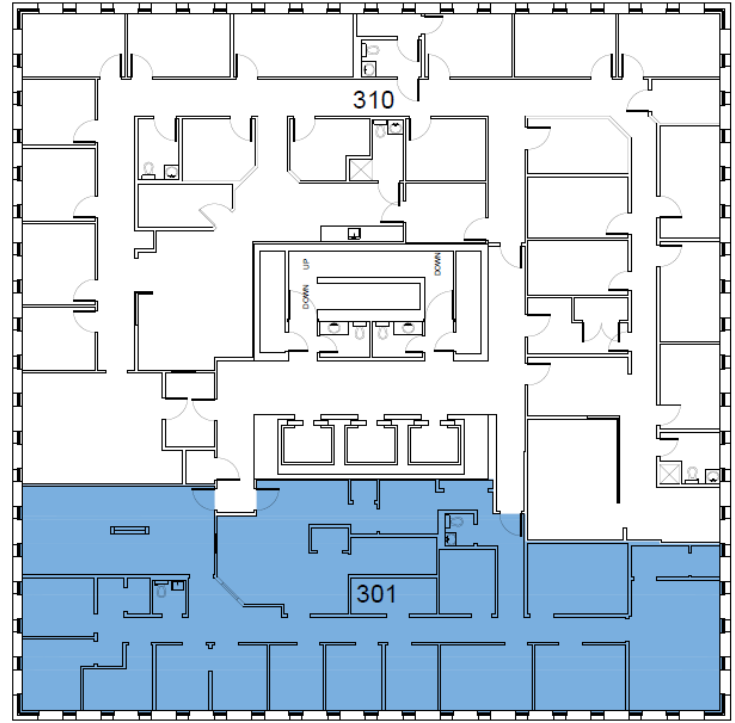


For More, Visit: [CornerstoneCompaniesInc.Com](http://CornerstoneCompaniesInc.Com)

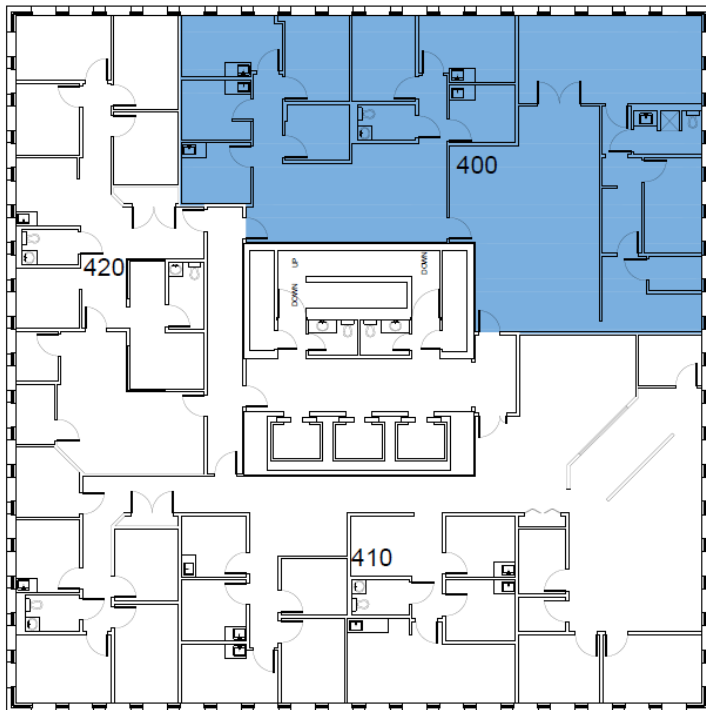
# FLOOR PLANS



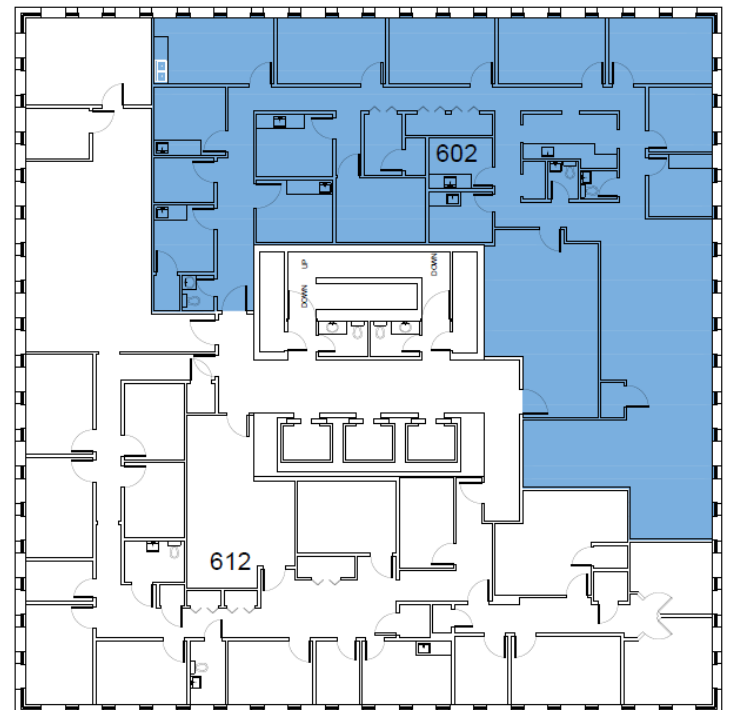
Suite 200: 1,435 RSF



Suite 301: 3,435 RSF

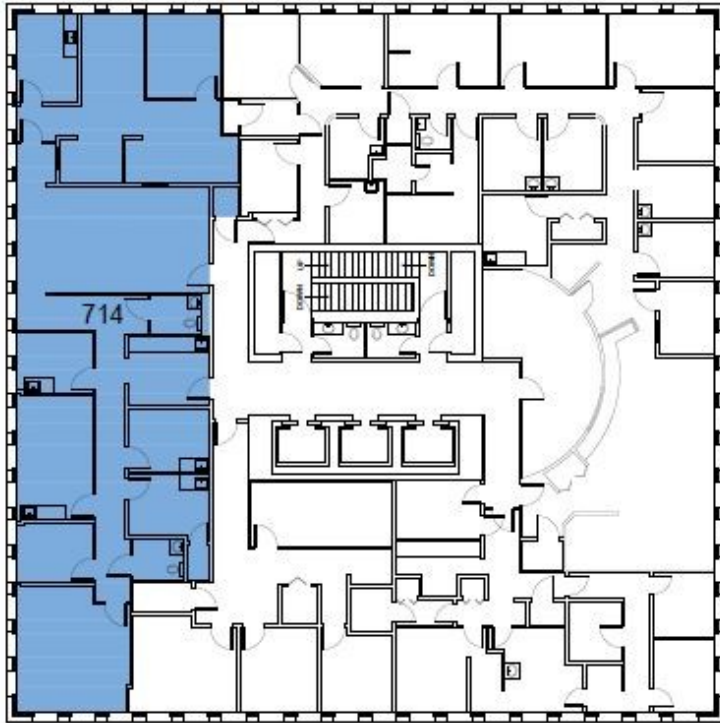


Suit 400: 3,311 RSF

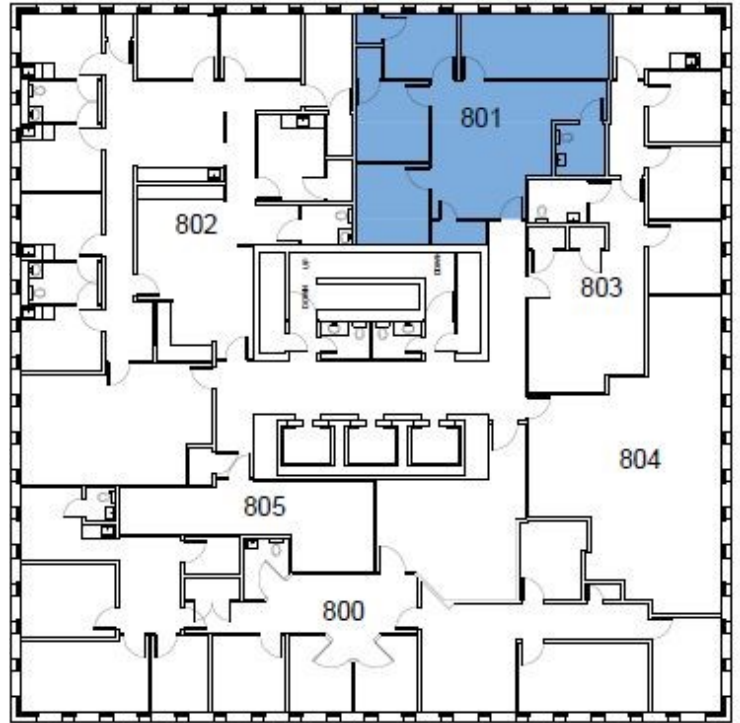


Suite 602: 4,525 RSF

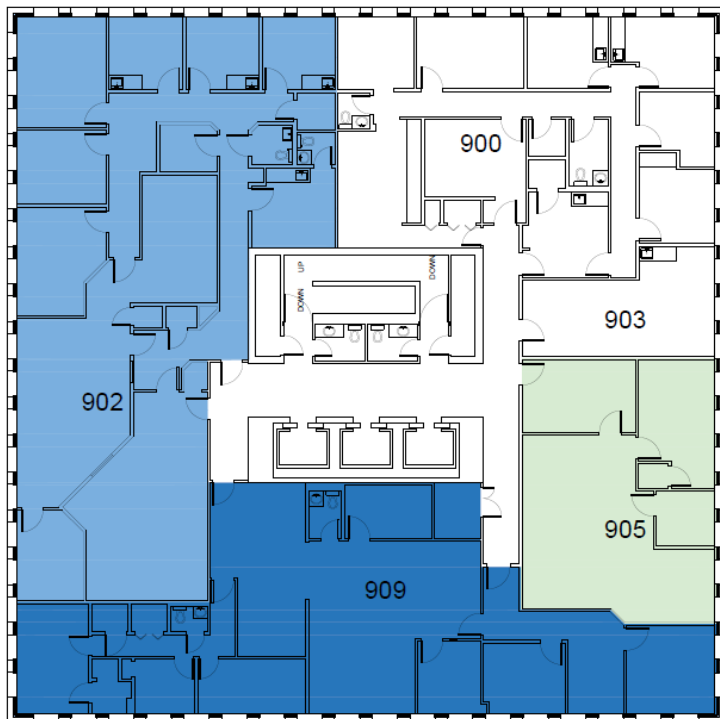
# FLOOR PLANS



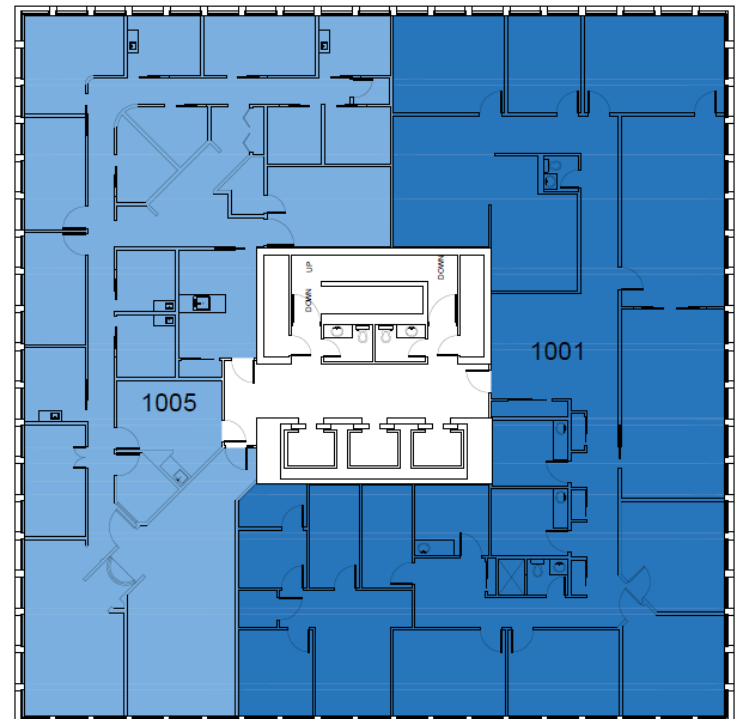
Suite 714: 3,015 RSF



Suite 801: 1,216 RSF



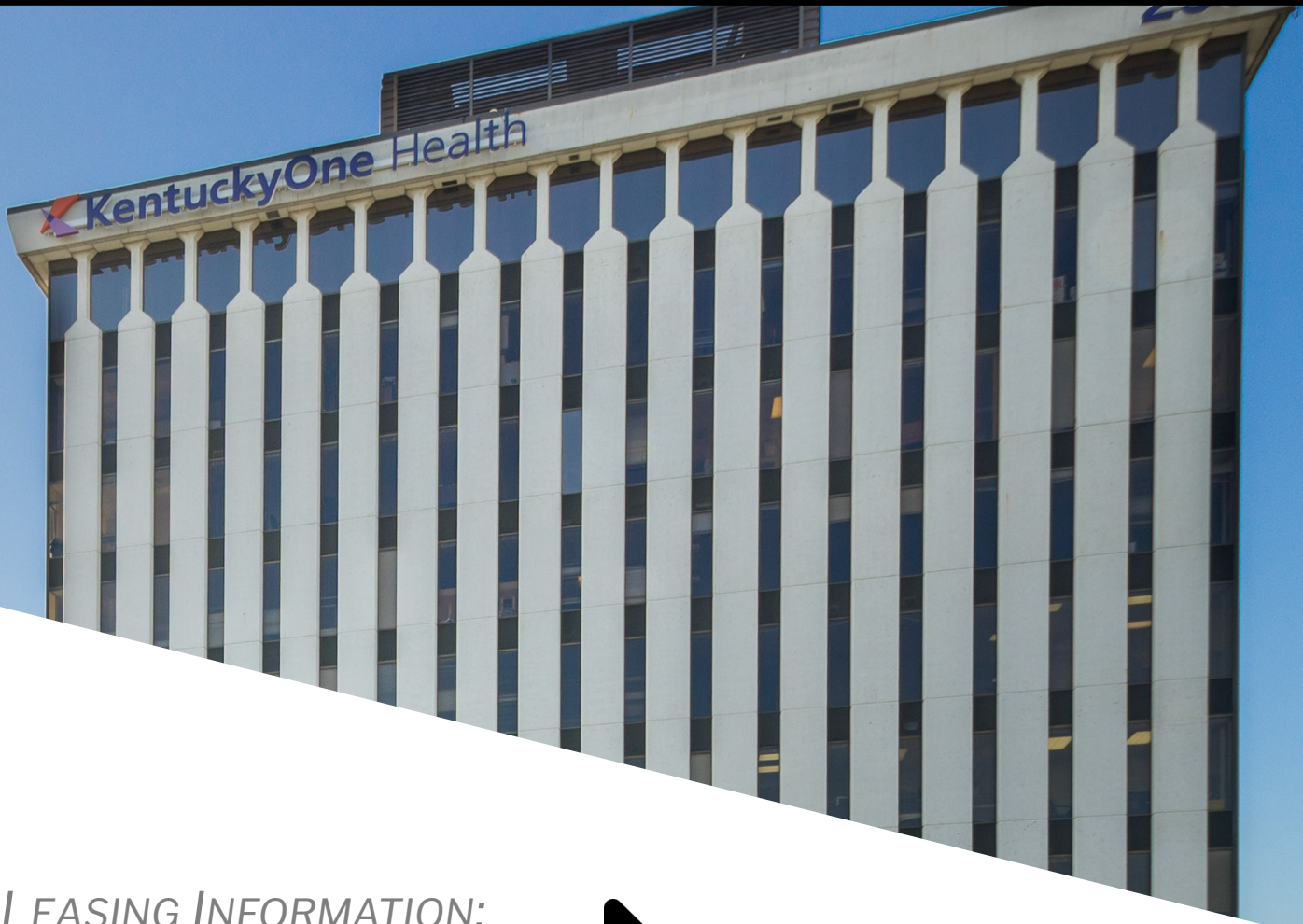
Suite 902: 3,462 RSF | Suite 905: 1,184 RSF  
Suite 909: 2,586 RSF



Suite 1001: 5,604 RSF | Suite 1005: 4,267 RSF



# CONTACT



*FOR LEASING INFORMATION:*

**Callie Gray**

(502)890-2043 | [CGray@Cciin.com](mailto:CGray@Cciin.com)



PHYSICIANS REALTY TRUST

CORNERSTONE COMPANIES, INC.  
250 E Liberty Street | Louisville, KY 40202 | [www.cornerstonecompaniesinc.com](http://www.cornerstonecompaniesinc.com)