



FOR LEASE

PROPERTY HIGHLIGHTS:

- Up to 7,375 RSF Available For Lease:
 - Suite 125: 3,301 RSF
 - Suite 205: 1,570 RSF— [Virtual Tour](#)
 - Suite 226: 2,504 RSF
- Building Size: 29,259 SF
- Class A Outpatient Medical Facility
- Located directly off Old Meridian Street in the highly-coveted Meridian Corridor
- Convenient access to Carmel City Center, US-31, and I-465
- Less than 4 miles from major hospitals like St. Vincent Carmel Hospital, IU Health North Hospital, and Franciscan Health Carmel
- 140 surface parking spaces

CARMEL MEDICAL PAVILION
13431 OLD MERIDIAN STREET
CARMEL, IN 46032

CONTACT:

Charles J. Yeo, CCIM, CPM
Senior Vice President, Brokerage
(317) 288-9006
CYeo@cciin.com

CORNERSTONE COMPANIES

8902 N. Meridian Street, Suite 205
Indianapolis, IN 46260



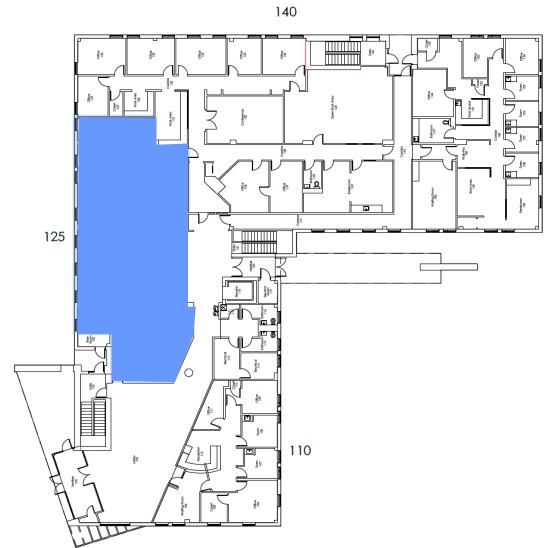
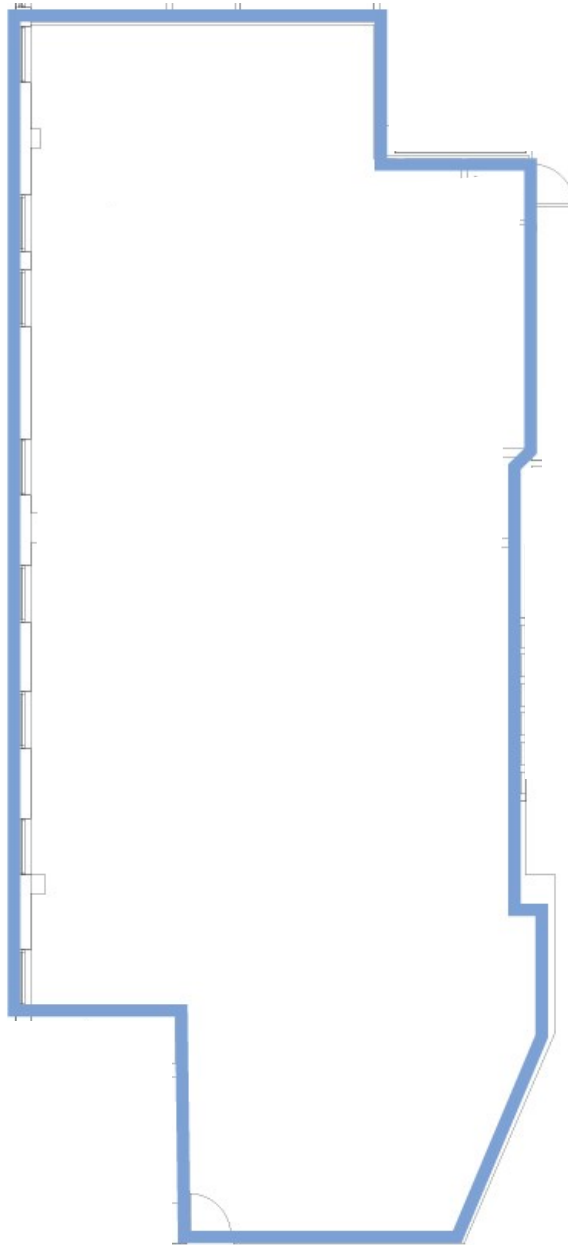
Healthpeak® | **DOC LISTED NYSE**

FLOOR PLAN

1ST FLOOR

SUITE 125
3,301 RSF
WHITEBOX

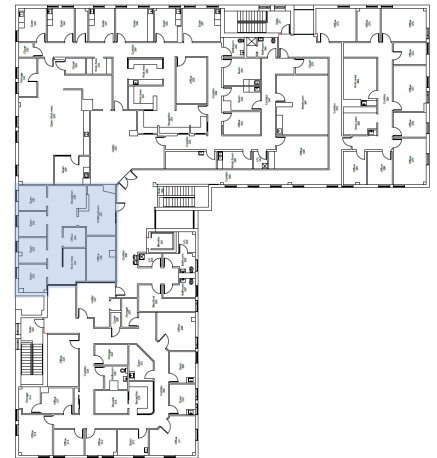
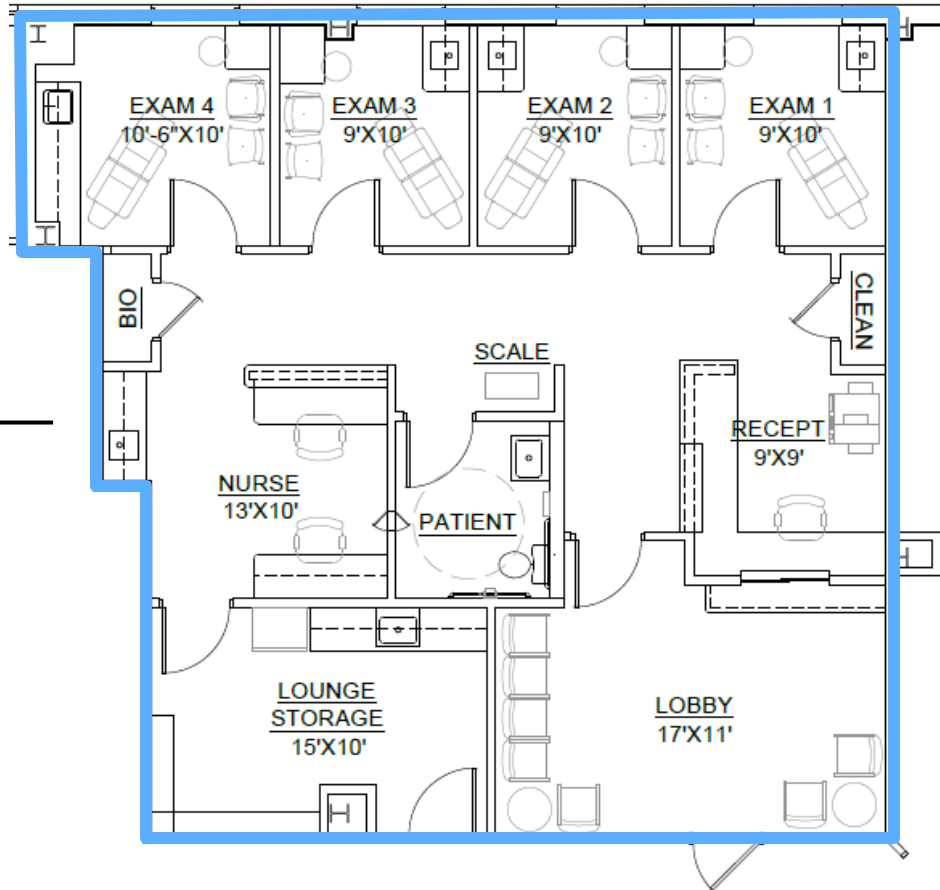
VIRTUAL TOURS:
[MEDICAL SPEC SUITE](#)
[DENTAL SPEC SUITE](#)



FLOOR PLAN

2ND FLOOR

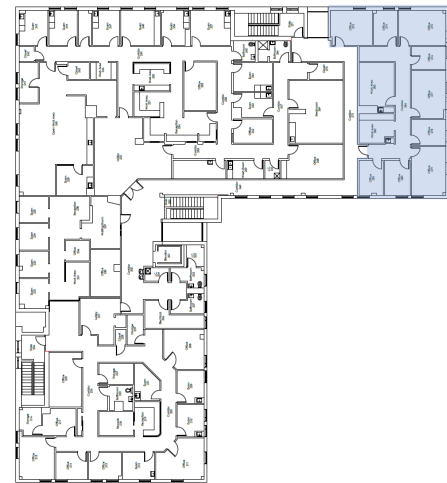
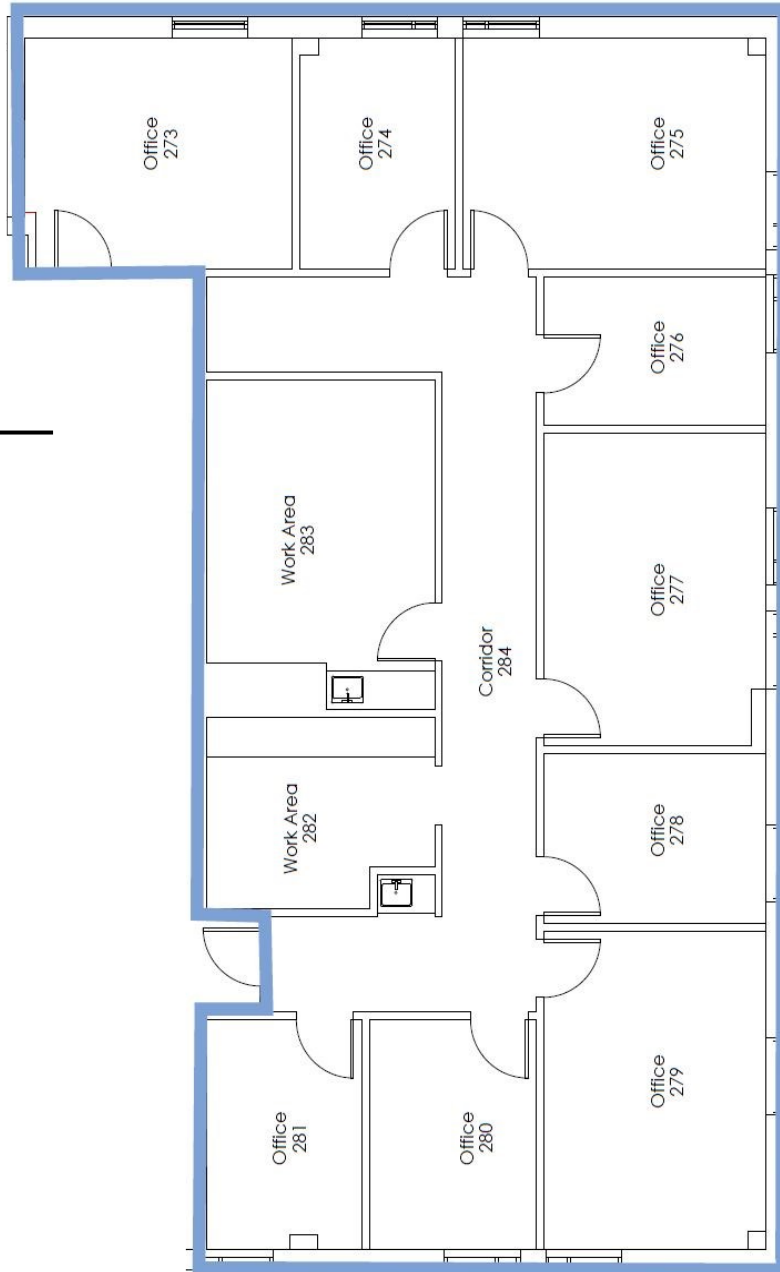
MEDICAL SPEC SUITE
SUITE 205:
1,570 RSF
[Virtual Tour](#)



FLOOR PLAN

2ND FLOOR

MEDICAL SUITE
SUITE 226:
2,504 RSF



Healthpeak®

DOC
LISTED
NYSE



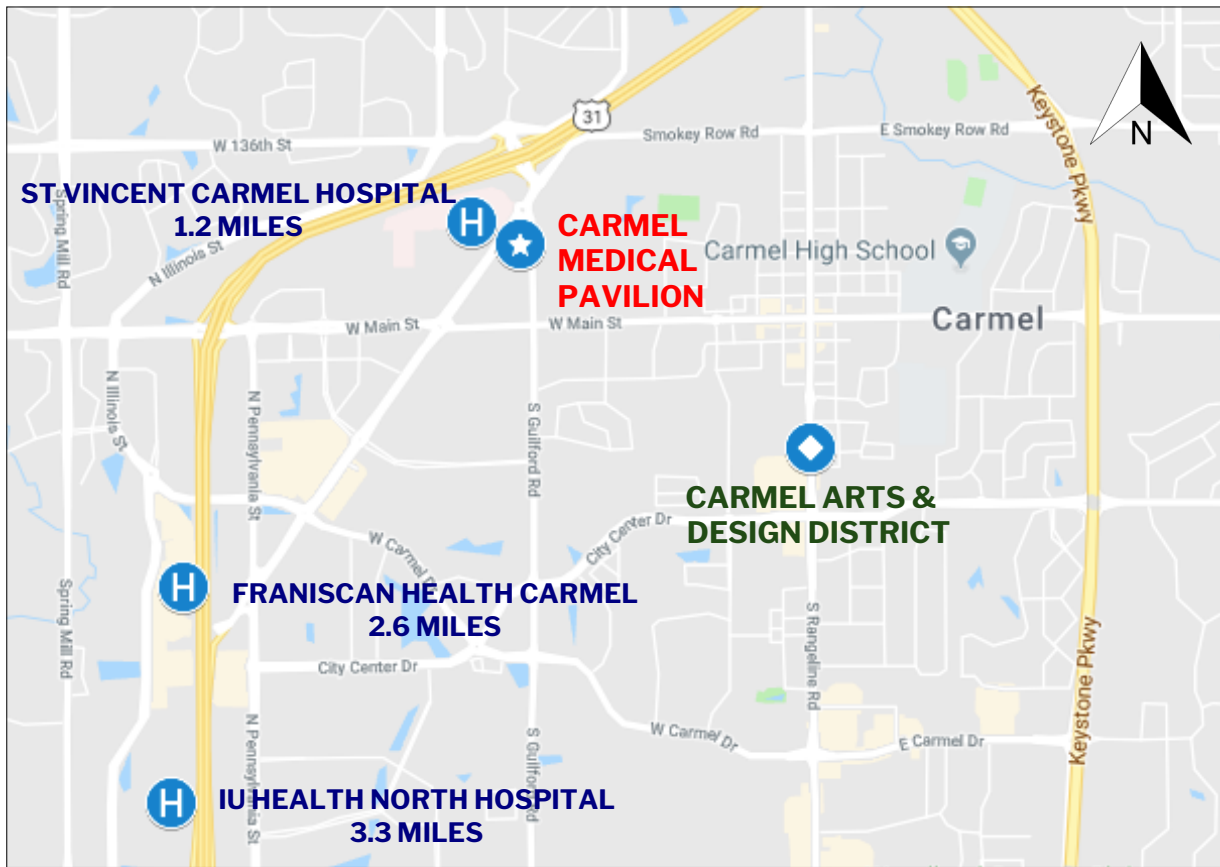
CORNERSTONE

LOCATION



ABOUT CARMEL, IN

Carmel is a city just north of Indianapolis with more than 92,000 residents. Frequently listed as one of the Best Places to Live in America by Money magazine, Carmel has highly educated and affluent residents. The city's Meridian Corridor is home to more than 40 corporate headquarters and regional offices, including some of the state's largest health care employers.



Healthpeak®

DOC
LISTED
NYSE

