



FOR LEASE

PROPERTY HIGHLIGHTS:

- Building Size: 62,175 SF
- For Lease:
 - Suite 102: 4,928 SF
 - Suite 103: 4,796 SF
 - Suite 230: 2,523 SF
- Located on the corner of Guilford and Mulford Road
- Less than 20 minutes east of downtown Rockford
- Ample parking with covered patient drop-off
- Easily accessible from I-90 & HWY 20
- High Visibility

CORNERSTONE BUILDING
1235 N MULFORD ROAD
ROCKFORD, IL 61107

CONTACT:

Ross Goyer	Quinn Peterson
EVP, Brokerage	Associate, Brokerage
(317) 288-9011	(317) 841-9900
RGoyer@cciin.com	QPeterson@cciin.com

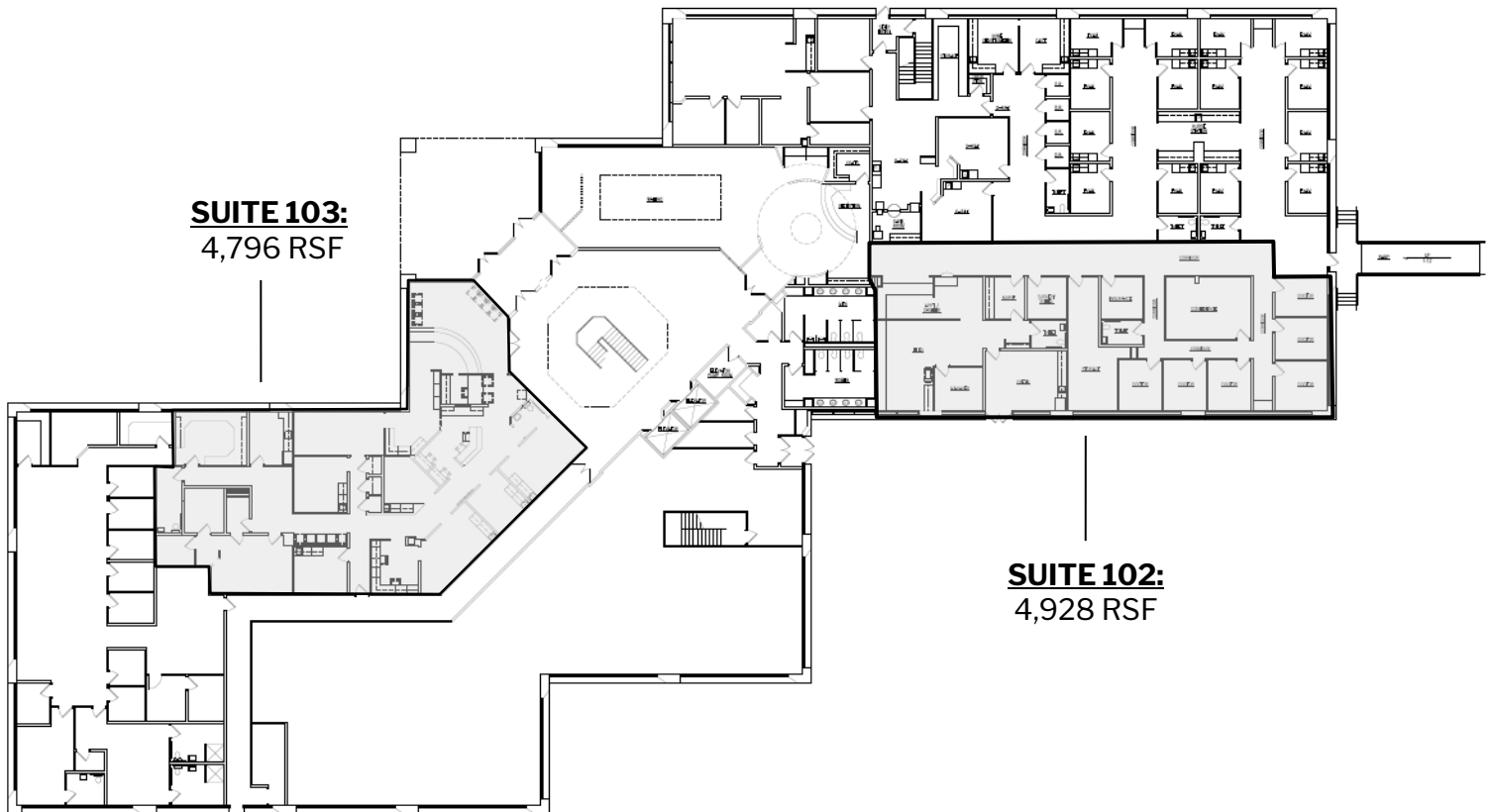
CORNERSTONE COMPANIES, INC.
8902 N. Meridian Street, Suite 205



For more, visit: CornerstoneCompaniesInc.com

FLOOR PLAN

1ST FLOOR

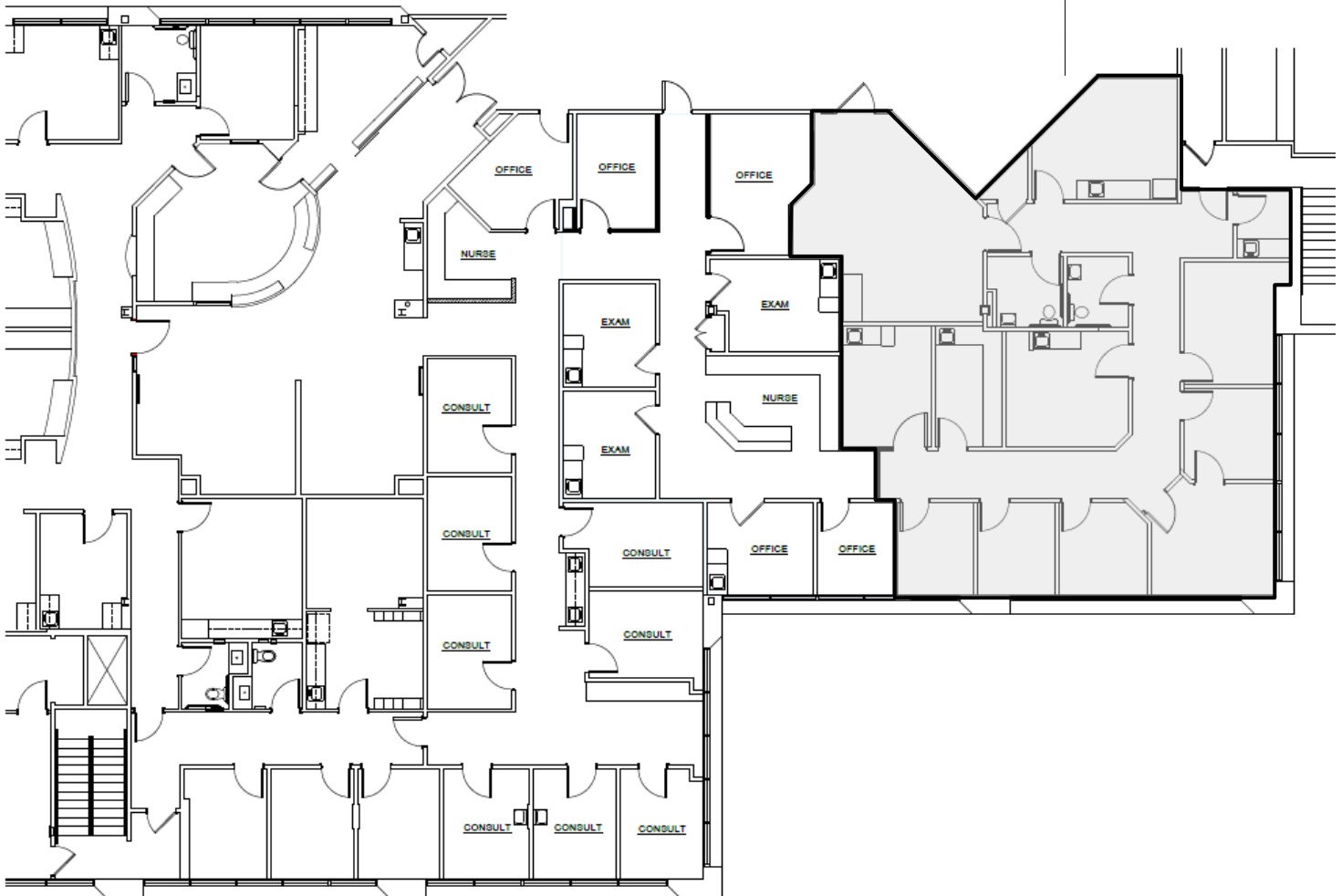


For more, visit: CornerstoneCompaniesInc.com

FLOOR PLAN

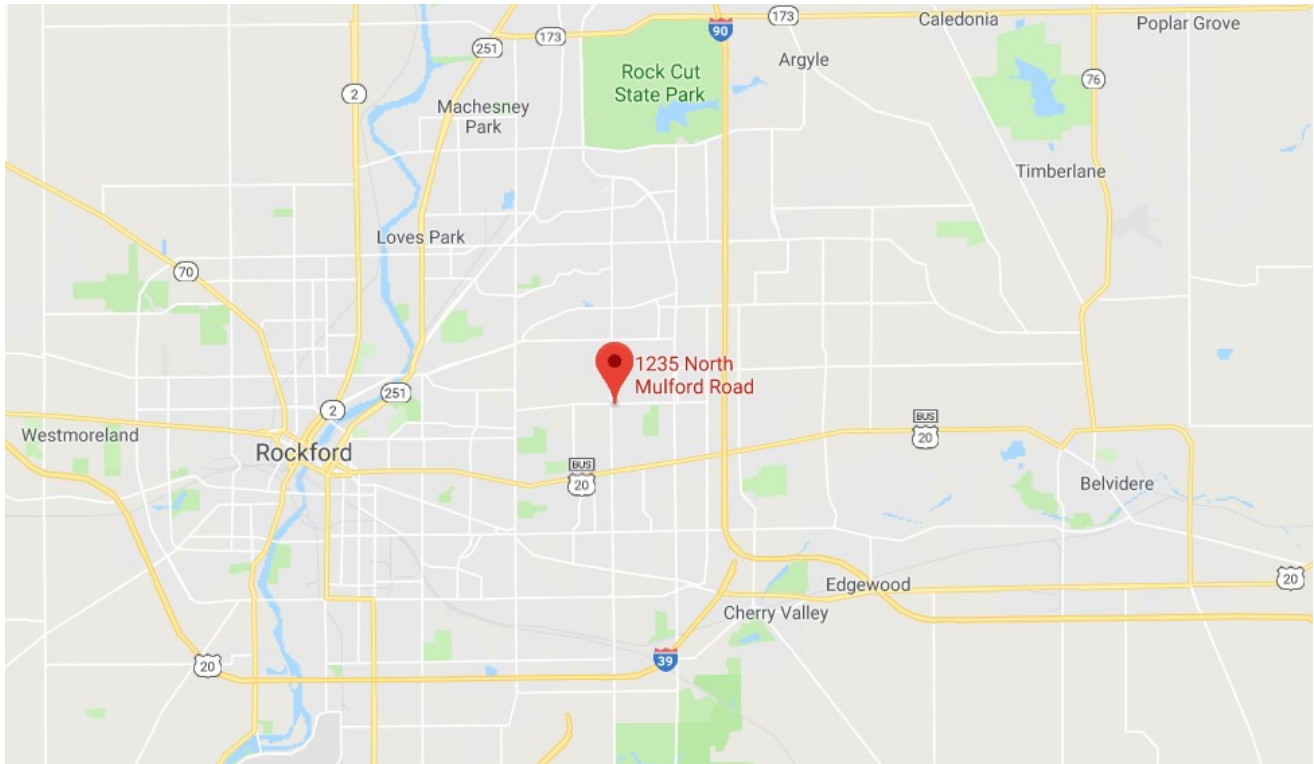
2ND FLOOR

SUITE 230:
2,523 RSF



For more, visit: CornerstoneCompaniesInc.com

LOCATION



For more, visit: CornerstoneCompaniesInc.com