



# FOR LEASE

## PROPERTY HIGHLIGHTS:

- Building Size: 62,175 SF
- For Lease:
  - Suite 102: 4,928 SF
  - Suite 103: 4,796 SF
  - Suite 200: 4,083 SF
- Located on the corner of Guilford and Mulford Road
- Less than 20 minutes east of downtown Rockford
- Ample parking with covered patient drop-off
- Easily accessible from I-90 & HWY 20
- High Visibility

CORNERSTONE BUILDING  
1235 N MULFORD ROAD  
ROCKFORD, IL 61107

## CONTACT:

Ben Cohen, MBA  
VP, Brokerage  
(317) 754-6245  
BCohen@cciin.com

**CORNERSTONE COMPANIES, INC.**  
8902 N. Meridian Street, Suite 205  
Indianapolis, IN 46260

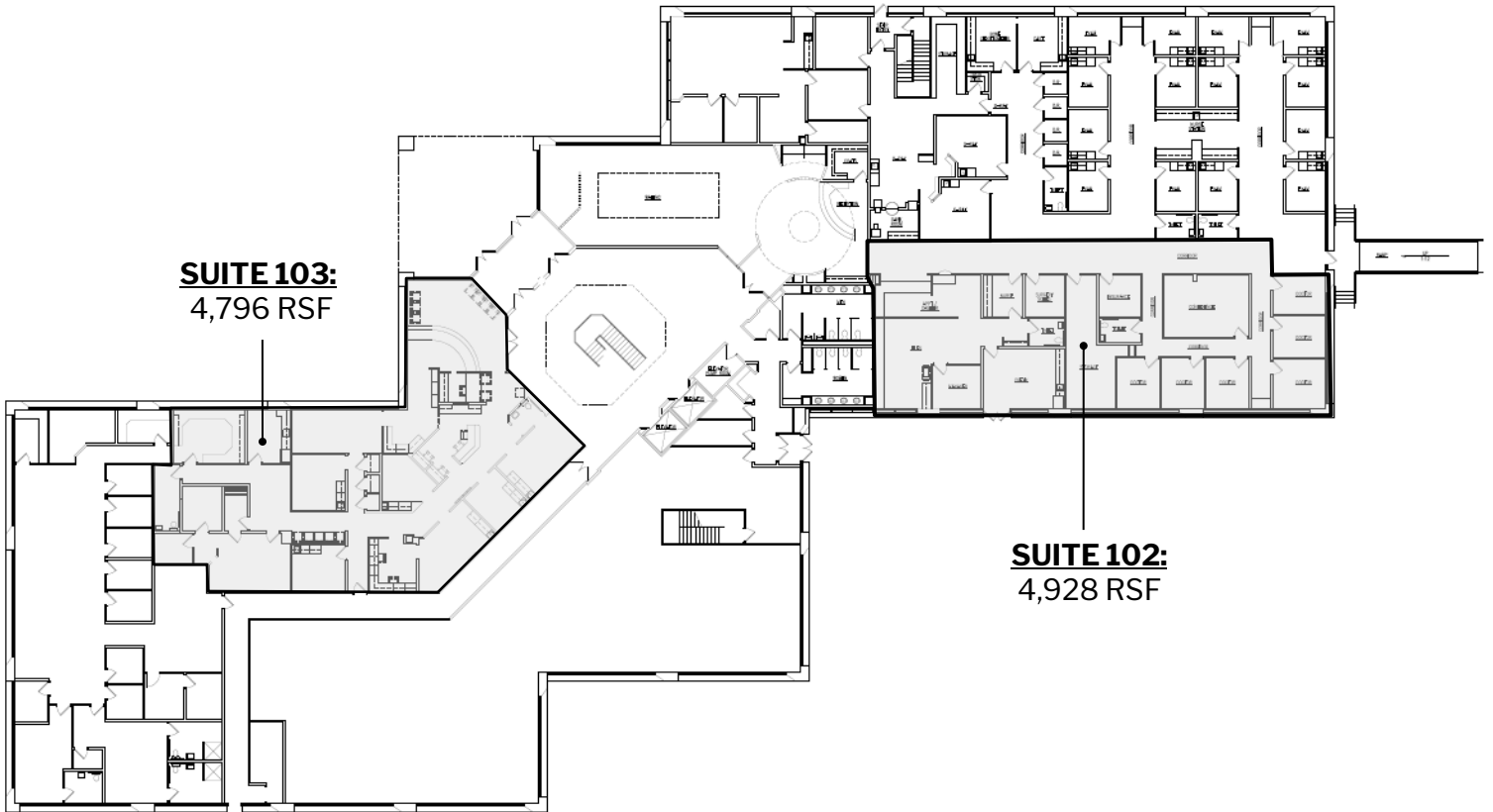


For more, visit: [CornerstoneCompaniesInc.com](http://CornerstoneCompaniesInc.com)

# FLOOR PLAN

---

## 1ST FLOOR

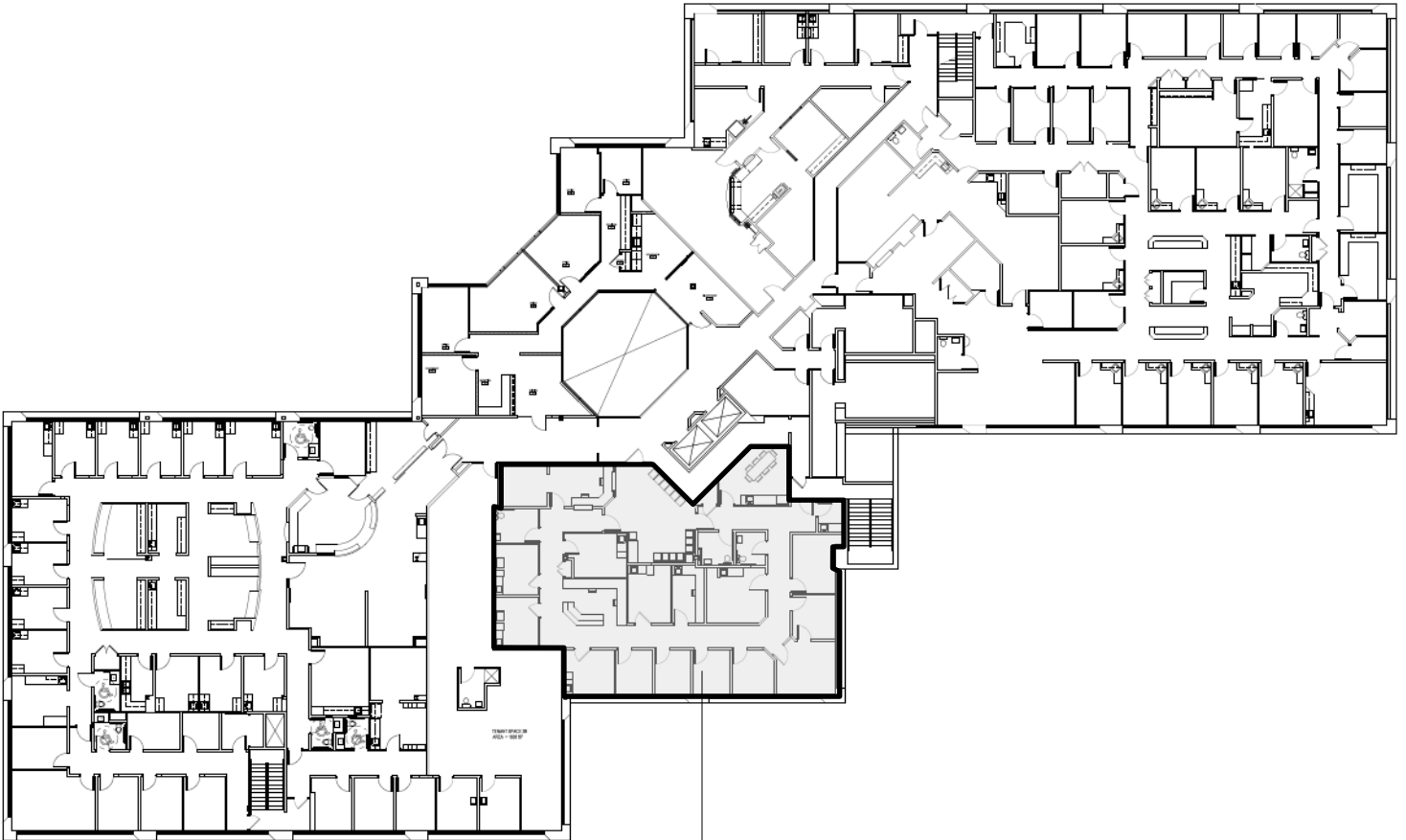


For more, visit: [CornerstoneCompaniesInc.com](http://CornerstoneCompaniesInc.com)

# FLOOR PLAN

---

## 2ND FLOOR



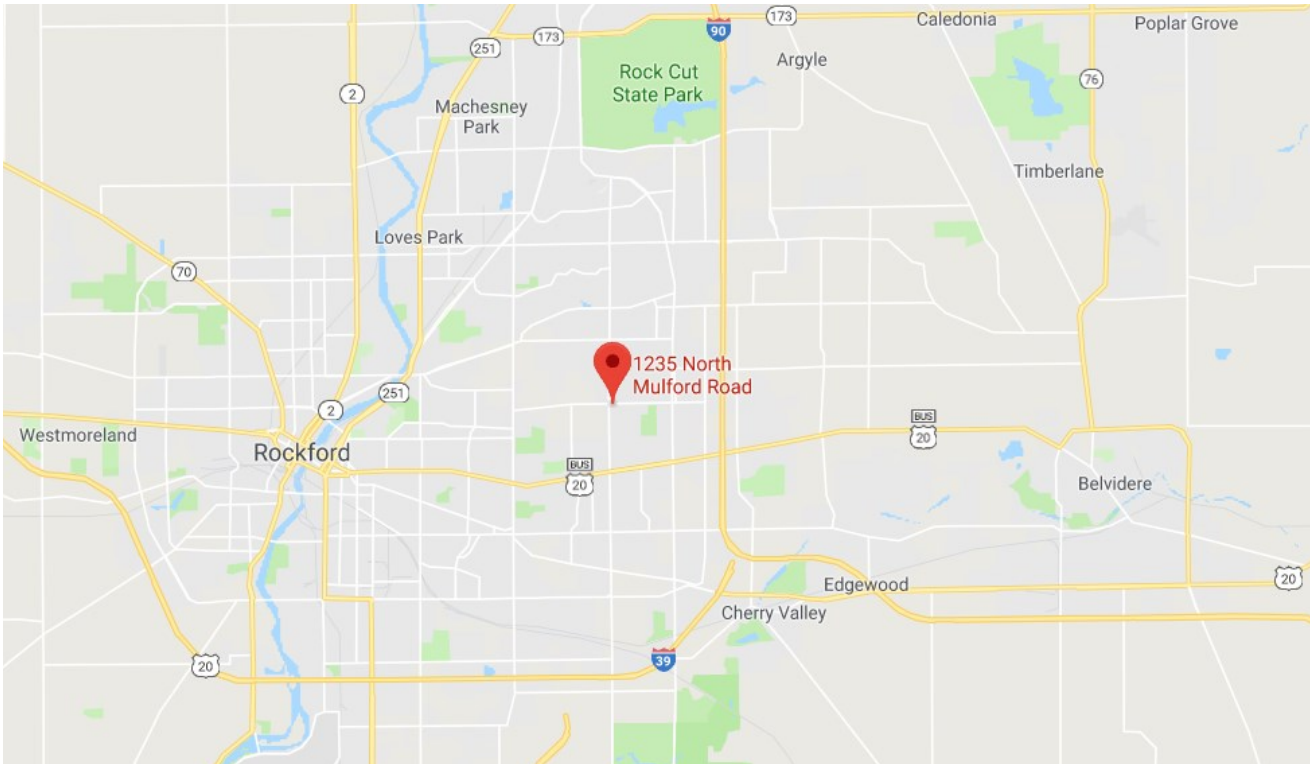
**SUITE 200:**  
4,083 RSF



For more, visit: [CornerstoneCompaniesInc.com](http://CornerstoneCompaniesInc.com)

# LOCATION

---



For more, visit: [CornerstoneCompaniesInc.com](http://CornerstoneCompaniesInc.com)