

# FOR LEASE

1235 N Mulford Road  
Rockford, IL 61107



## PROPERTY DETAILS



- Building Size: 62,175 SF



- For Lease:

- Suite 102: 4,928 SF
- Suite 103: 4,796 SF
- Suite 230: 2,523 SF



- Located on the corner of Guilford and Mulford Road



- Less than 20 minutes east of downtown Rockford



- Ample parking with covered patient drop-off



- Easily accessible from I-90 & HWY 20



- High Visibility

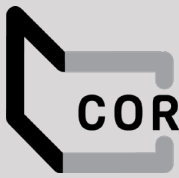


## CONTACT

Ross Goyer  
EVP, Brokerage  
317.288.9011  
[rgoyer@cciin.com](mailto:rgoyer@cciin.com)

Quinn Peterson  
Associate, Brokerage  
317.841.9900  
[qpeter@cciin.com](mailto:qpeter@cciin.com)

HQ: Cornerstone Companies, Inc.  
8902 N Meridian Street, Suite 205  
Indianapolis, IN | 317.841.9900  
[cornerstonecompaniesinc.com](http://cornerstonecompaniesinc.com)



**CORNERSTONE**

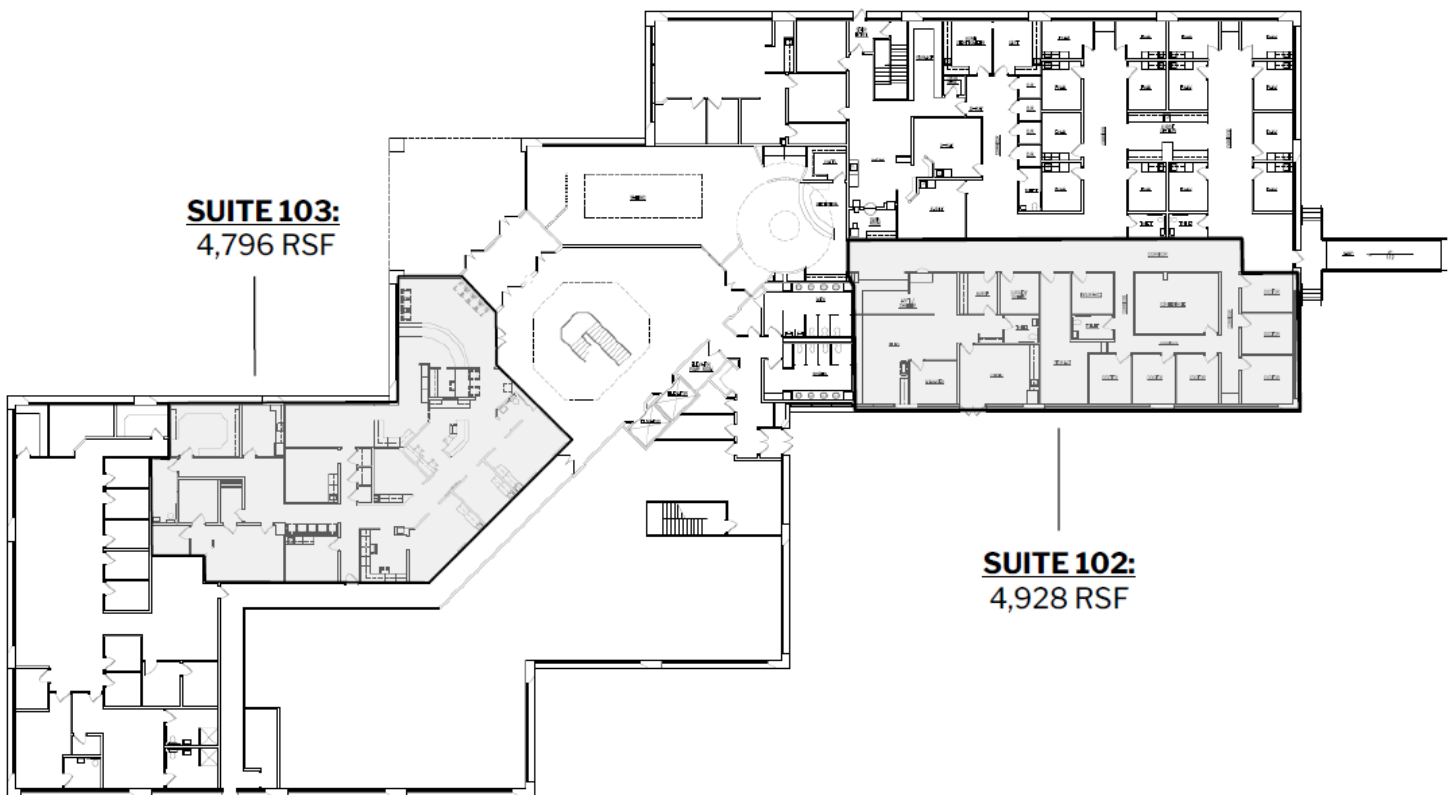
# FLOOR PLAN

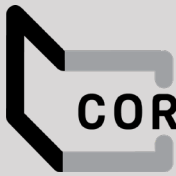
1235 N Mulford Road  
Rockford, IL 61107



Suites Available | 4,796 SF | 4,928 SF

## 1ST FLOOR





CORNERSTONE

# FLOOR PLAN

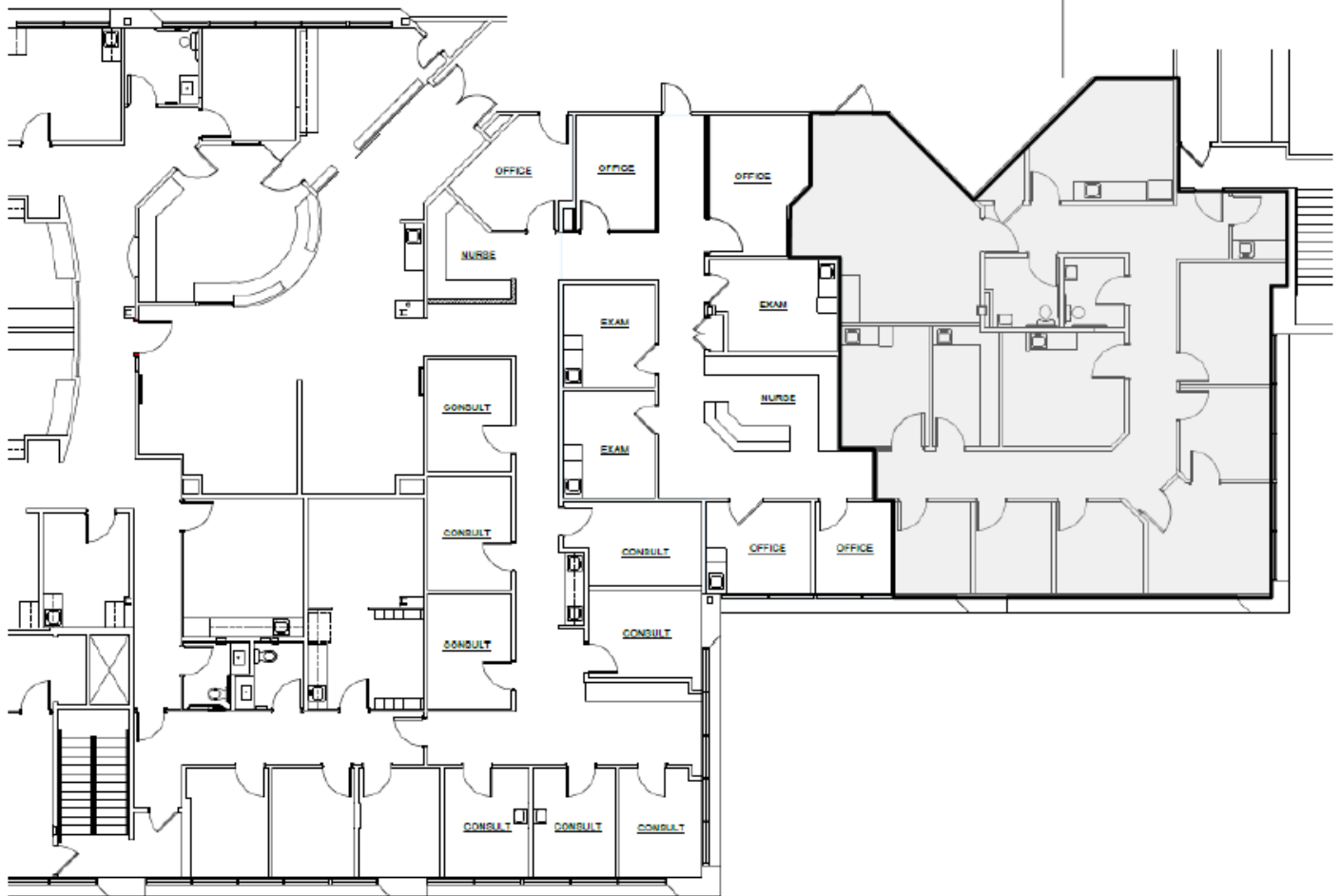
1235 N Mulford Road  
Rockford, IL 61107

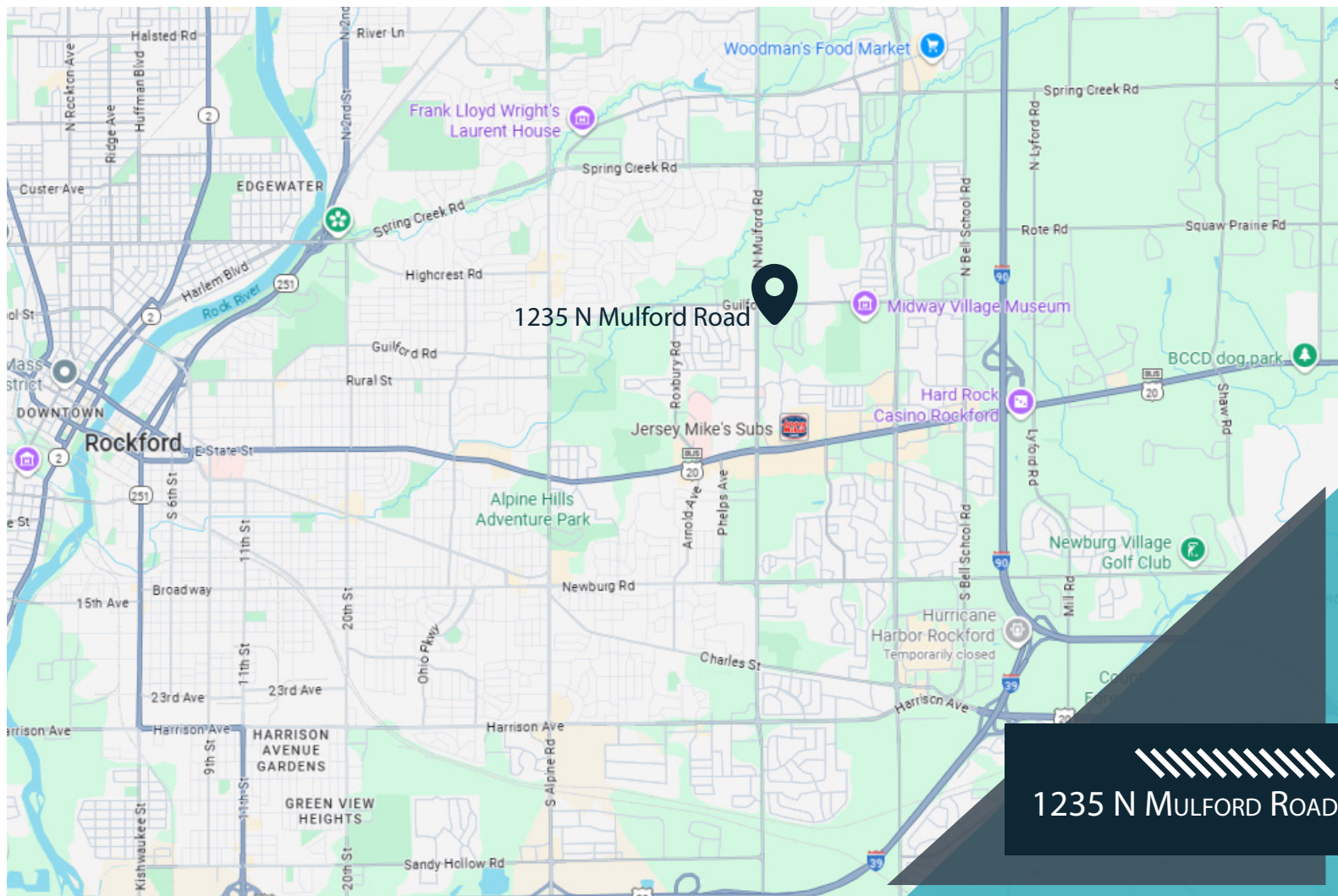


Suites Available | 2,523 SF

## 2ND FLOOR

**SUITE 230:**  
2,523 RSF





## DEMOGRAPHICS

(3 - mile radius)



**59,750**  
Population



**43.5**  
Median Age



**24,953**  
Households



**\$66,522**  
Median House-  
hold Income



**\$89,414**  
Average Household Income



**CORNERSTONE**



## CONTACT

Ross Goyer  
EVP, Brokerage  
317.288.9011  
rgoyer@ccin.com

Quinn Peterson  
Associate, Brokerage  
317.841.9900  
qpeterson@ccin.com

Cornerstone Companies, Inc.  
8902 N Meridian Street, Suite 205  
Indianapolis, IN 46260

