



# FOR LEASE

## PROPERTY HIGHLIGHTS:

- New construction, featuring state-of-the-art design, functionality and amenities
- Located in a high-traffic, highly sought-after area on North Meridian Street just south of 96th Street
- Easily accessible from I-465 and US 31
- Ample parking for tenants and patients
- Close proximity to several physician offices and hospitals, including IU Health North Hospital, Peyton Manning Children's Hospital, St. Vincent 86th Street Campus and St. Vincent Carmel Campus.
- Building Size: 48,054 SF
- 12,981 RSF of space available for lease
- Competitive Rental Rates: 18.00/SF NNN
- \$60/SF Tenant Improvement contributed by Landlord on 10-year term

9202 N MERIDIAN STREET  
INDIANAPOLIS, IN 46260

## CONTACT:

Ben Cohen, MBA  
Brokerage Associate  
317.754.6245  
BCohen@Cciin.com

## CORNERSTONE COMPANIES, INC

8902 N. Meridian Street, Suite 205  
Indianapolis, IN 46260



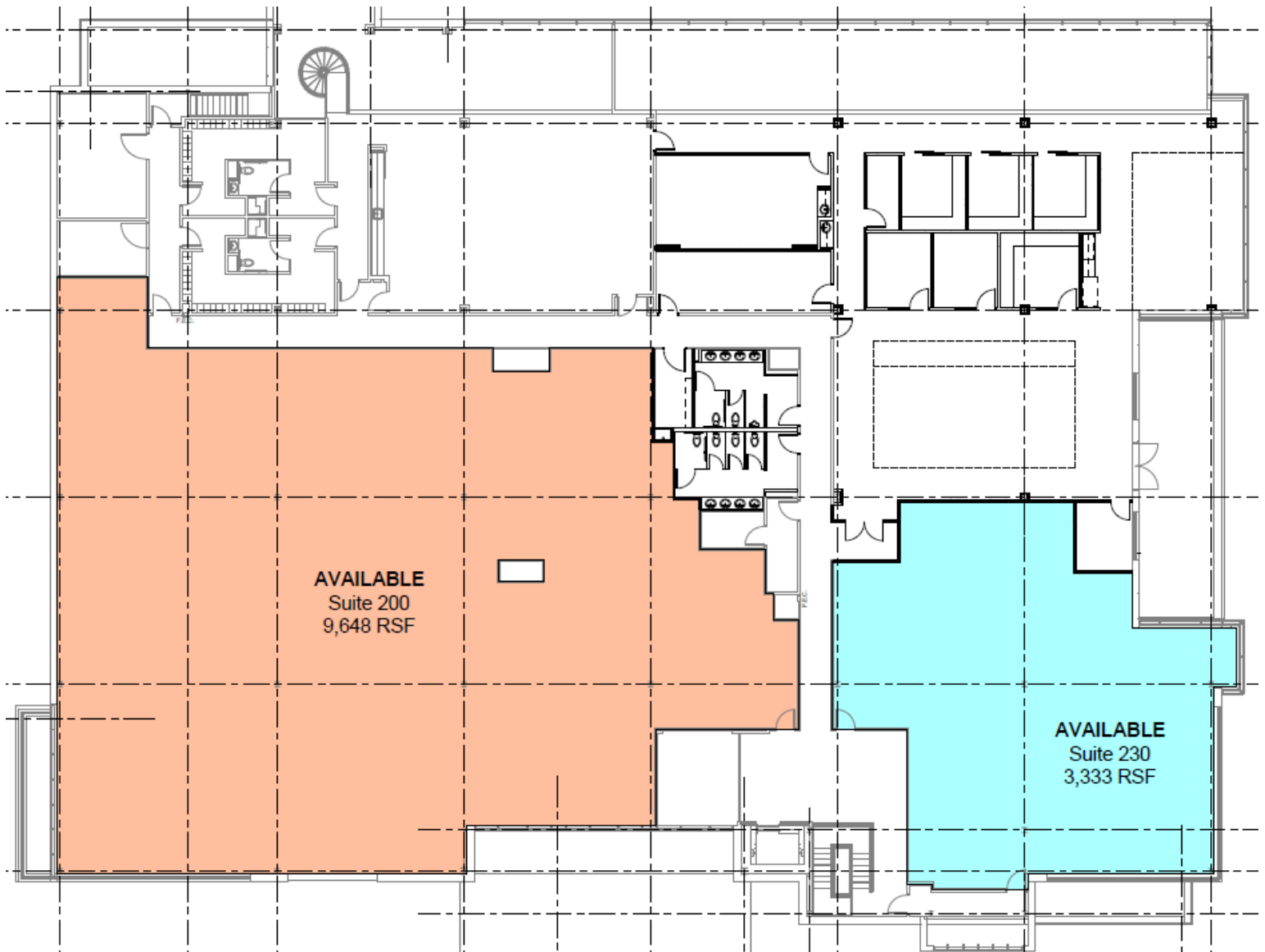
For More, Visit: [CornerstoneCompaniesInc.Com](http://CornerstoneCompaniesInc.Com)

# LOCATION



For More, Visit: [CornerstoneCompaniesInc.Com](http://CornerstoneCompaniesInc.Com)

# FLOOR PLAN



Max Contiguous Space Available: 9,648 RSF

Min Divisible Space Available: 2,500 RSF



For More, Visit: [CornerstoneCompaniesInc.Com](http://CornerstoneCompaniesInc.Com)