



FOR LEASE

PROPERTY HIGHLIGHTS:

- Building Size: 43,730 SF
- 3,316 RSF of medical office space available
- Located less than a half mile east of 146th Street and US 37 in Noblesville
- 5 miles from Riverview Health Hospital and St. Vincent Fishers Hospital and less than 6 miles from IU Health Saxony Hospital
- Covered patient drop-off
- Diverse tenant mix
- Premier medical office space location

RIVERVIEW MEDICAL ARTS
BUILDING
14540 PRAIRIE LAKES BLVD. N.
NOBLESVILLE, IN 46060

CONTACT:

Charles J. Yeo
Vice President
317.288.9006
CYeo@CornerstoneCompaniesInc.com

CORNERSTONE COMPANIES, INC
8902 N. Meridian St., Ste. 205
Indianapolis, IN 46260

2 VACANCIES LEFT:
STE 100: 1,909 RSF
STE 204: 1,407 RSF



CornerstoneCompaniesInc.com

ColonyCapital

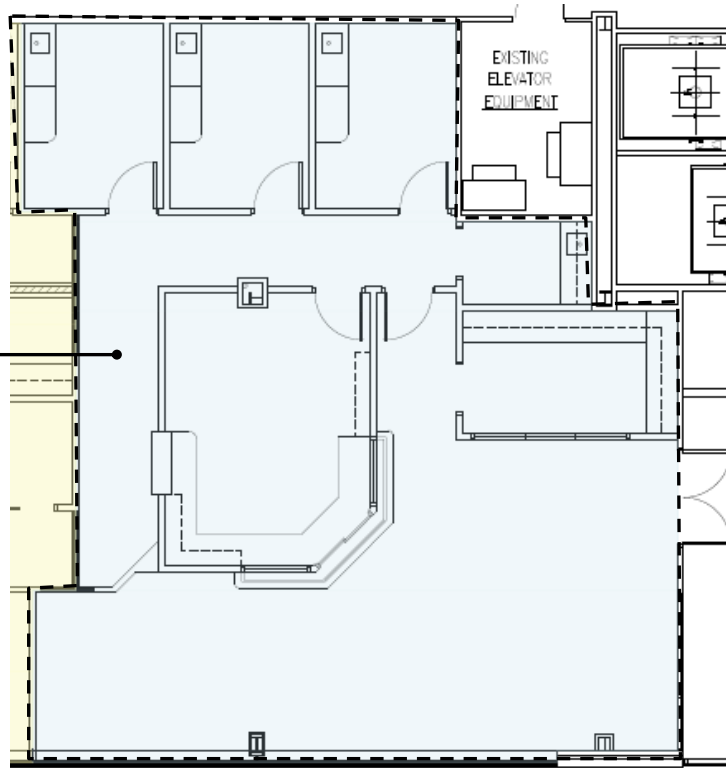
LOCATION



FLOOR PLAN

1ST FLOOR

AVAILABLE:
STE. 100
1,909 RSF



AVAILABLE:
STE. 204
1,407 RSF

2ND FLOOR

