



# FOR LEASE

## PROPERTY HIGHLIGHTS:

- 2,640 RSF Medical Office Space Available
- Minutes from Community Hospital South and the St. Francis South Campus
- Easy Access to/from I-65
- Less than 20 minutes from downtown Indianapolis

### **AVAILABLE SUITE:**

- Suite G: 2,640 RSF

## INDIANA AMERICAN MEDICAL OFFICE

521 E COUNTY LINE ROAD  
GREENWOOD, IN 46143

### **CONTACT:**

Charles J. Yeo  
Vice President  
317.288.9006  
CYeo@cciin.com

**CORNERSTONE COMPANIES, INC**  
8902 N. Meridian Street, Suite 205  
Indianapolis, IN 46260



PHYSICIANS REALTY TRUST



CORNERSTONE

# BUILDING OVERVIEW

## INDIANA AMERICAN MEDICAL OFFICE BUILDING 3

Indiana American Medical Office Building 3 is an 18,359 RSF facility located at 521 E. County Line Road in Greenwood, Indiana. Greenwood was a 2017 recipient of Time Magazine's Best Places to Live in America award for its family-friendly lifestyle, low cost of living and healthy economic outlook.

This property is located less than 20 minutes from downtown Indianapolis and 25 minutes from the Indianapolis International Airport. Situated one mile west of Interstate 65, this location is easily accessible to both patients and staff. Its high degree of visibility from County Line Road and competitive lease terms make this a prime site for medical practices.

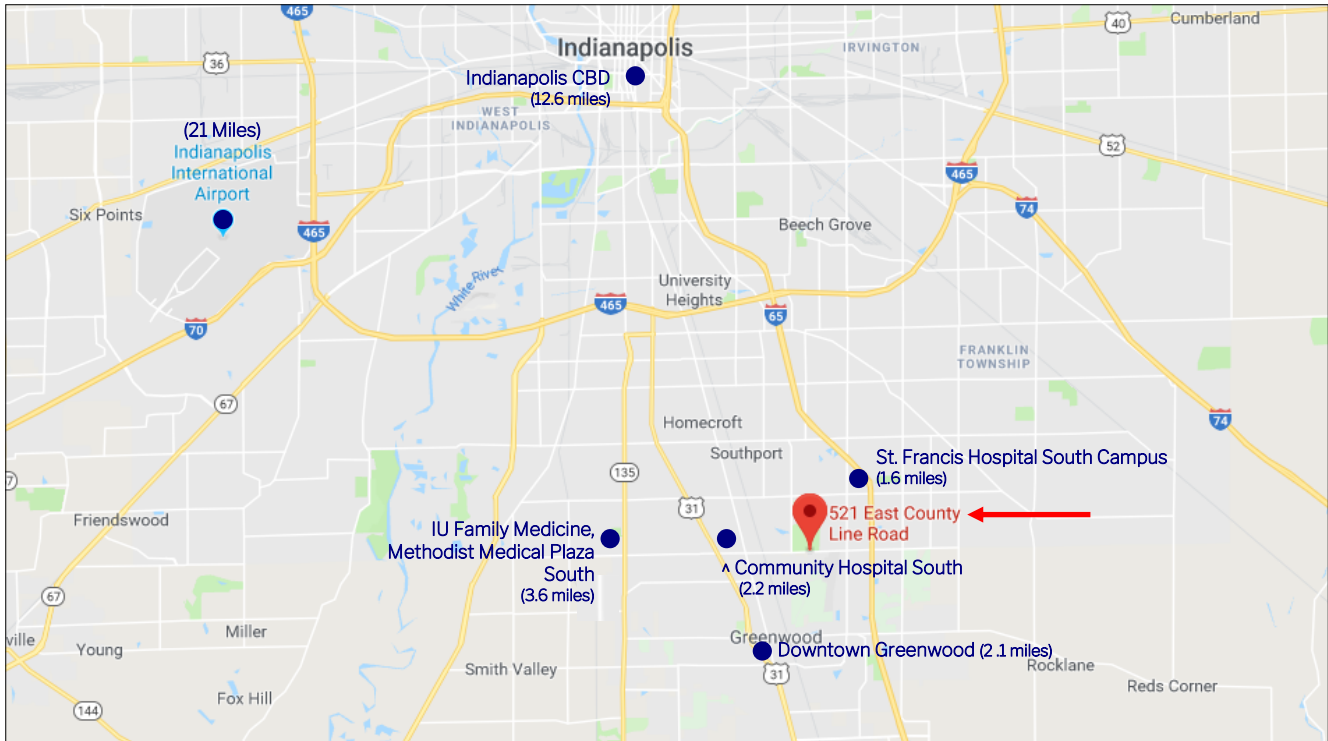
### NEARBY HOSPITAL SYSTEMS:

- COMMUNITY HOSPITAL SOUTH (2.2 MILES)
- ST. FRANCIS HOSPITAL SOUTH CAMPUS (1.8 MILES)
- IU HEALTH PHYSICIANS FAMILY AND INTERNAL HEALTH AT METHODIST MEDICAL PLAZA SOUTH (3 .5MILES)

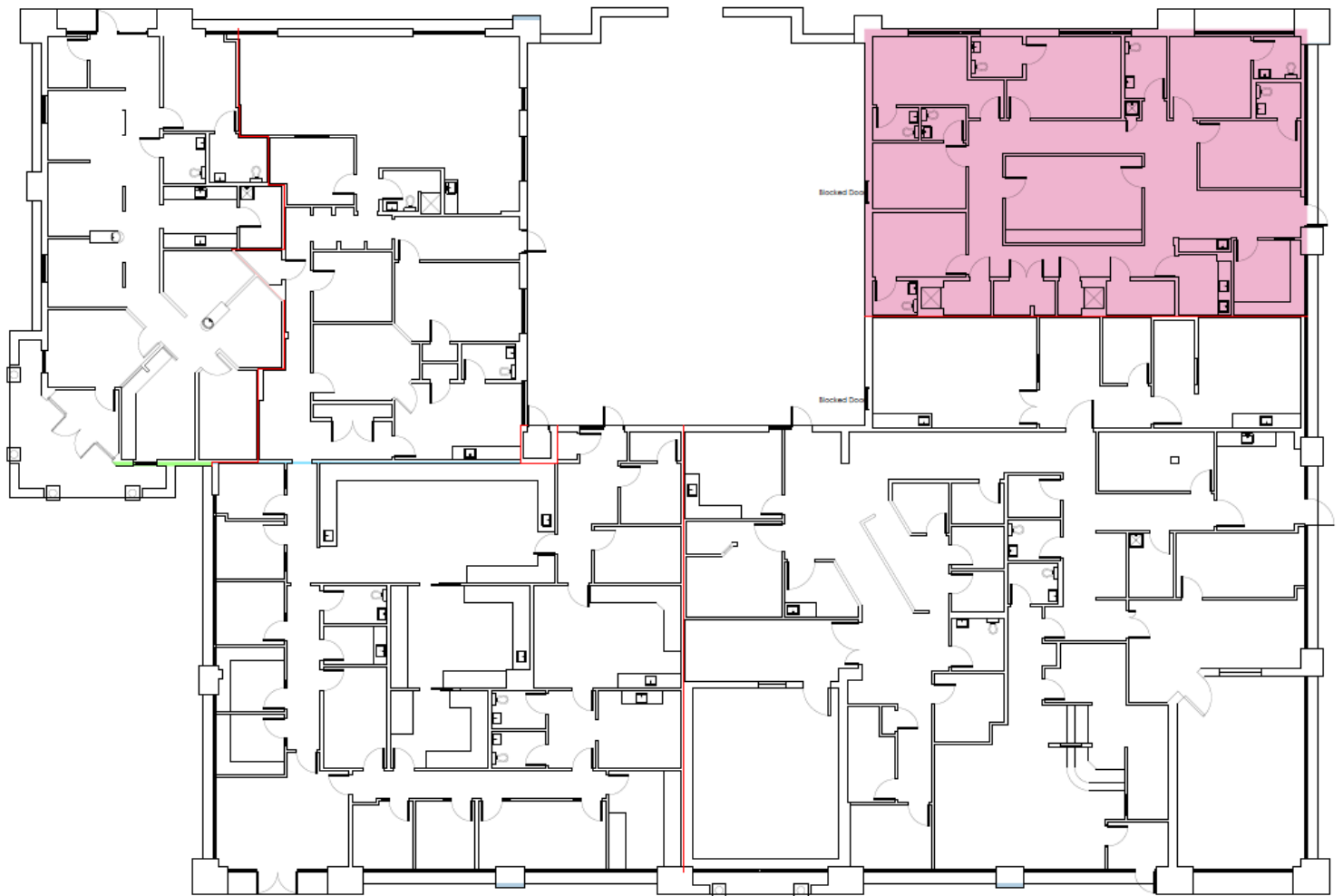




# LOCATION



# FLOOR PLAN



**STE G: 2,640 RSF**  
(available 1/1/21)

# CONTACT



*FOR LEASING INFORMATION:*

**Charles J. Yeo**

(317) 288-9006 | [CYeo@cciin.com](mailto:CYeo@cciin.com)



PHYSICIANS REALTY TRUST

CORNERSTONE COMPANIES, INC.  
8902 N Meridian Street, Suite 205 | Indianapolis, IN 46260 | [www.CornerstoneCompaniesInc.com](http://www.CornerstoneCompaniesInc.com)