


FOR SUBLEASE



 533 E County Line Rd, Greenwood, IN



PROPERTY HIGHLIGHTS

- Medical office for sublease
- Suite 212: 3,376 SF
- Sublease expires 6/30/28
- Outpatient medical facility conveniently located off I-65 and County Line Road
- Easy access to major highways including I-65, I-465, and US 31
- Minutes from Community Hospital South, Community Rehabilitation Hospital South, Franciscan Health Indianapolis Hospital, and OrthoIndy Hospital South



533 E County Line Rd.
Greenwood, IN 46143



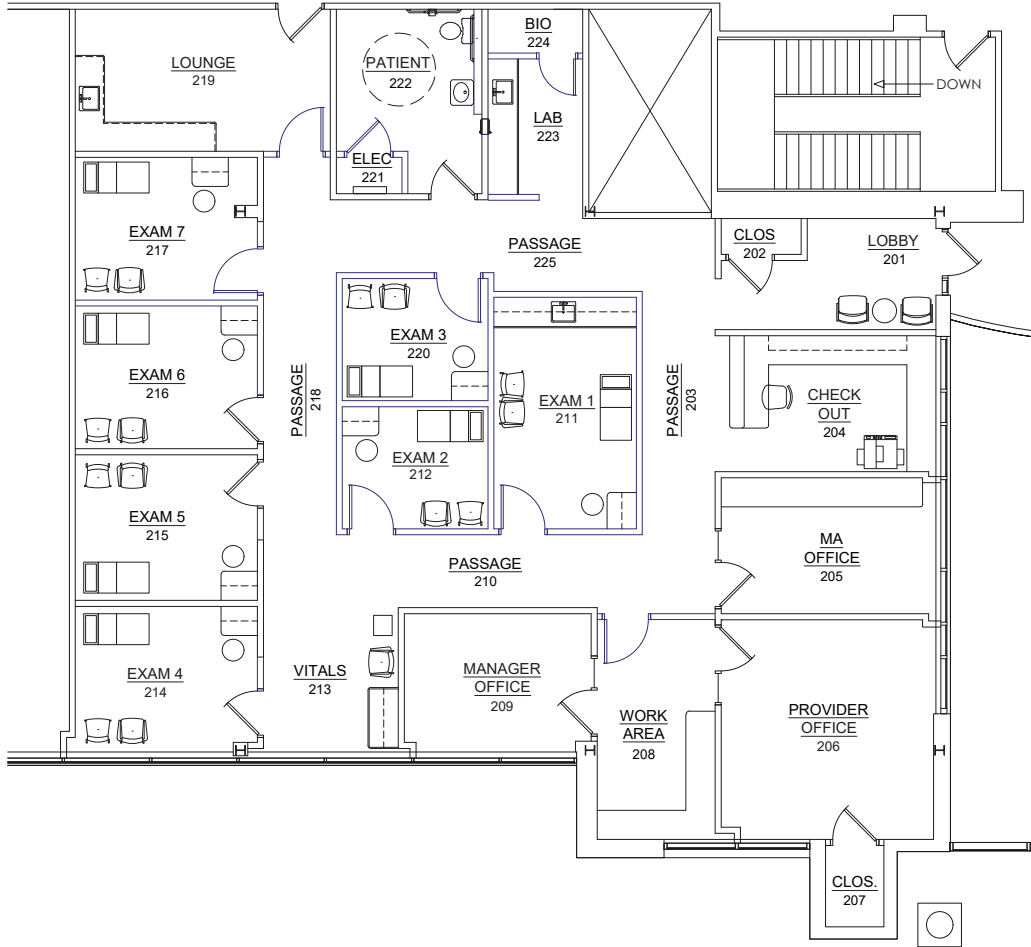
CONTACT

Ben Cohen, MBA
VP, Brokerage
317-754-6245
bcohen@cciin.com

Cornerstone Companies, Inc.
8902 N Meridian Street, Suite 205
Indianapolis, IN, 46260

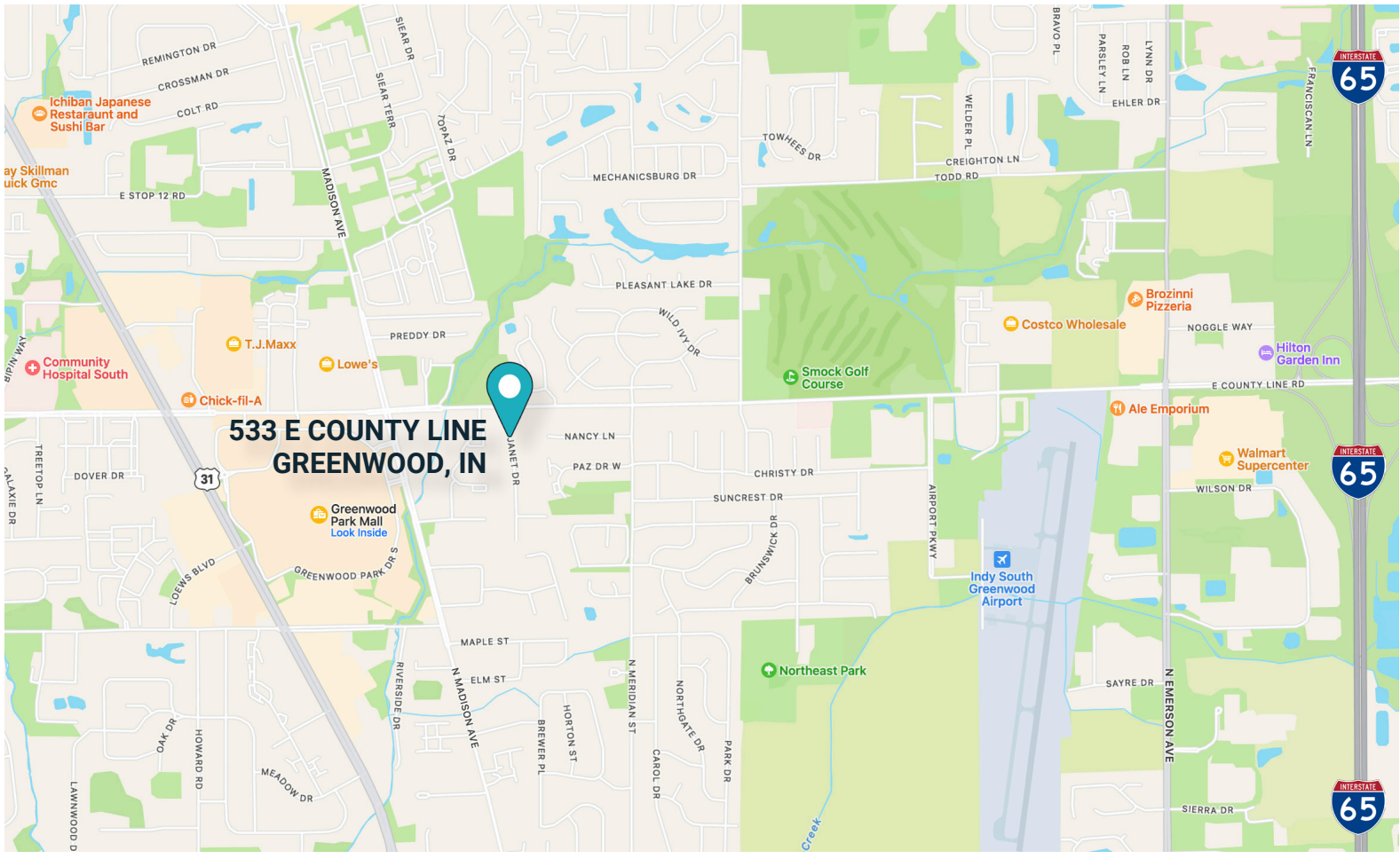
FLOOR PLAN

Suite 212
3,376 SF
Medical Office



KEY PLAN






**533 E COUNTY LINE
GREENWOOD, IN**


DEMOGRAPHICS

**5-mile radius of site*

 **195,483**
Population


 **\$35,403**
Per Capita Income

 **74,971**
Households

 **37.6**
Median Age

 **\$69,174**
Median Household Income

 **\$55,680**
Median Disposable Income

 **\$151,414**
Median Net Worth

CONTACT

Ben Cohen, MBA
VP, Brokerage
317-754-6245
bcohen@cciin.com

Cornerstone Companies, Inc.
8902 N Meridian Street, Suite 205
Indianapolis, IN, 46260

© 2023 Cornerstone Companies, Inc. All rights reserved. Although the information contained herein has been obtained from sources deemed reliable, Owner, Cornerstone Companies, Inc., and/or their representatives, brokers or agents make no representation or warranty as to its accuracy or completeness. Any reliance on this information is solely at your own risk.