

FOR LEASE



PROPERTY DETAILS



- Building Size: 179,733 RSF
- 19,130 RSF For Lease
- Conveniently located off 91st and Meridian Street
- Highly sought-after location with easy access to US 31 and I-465
- Sits approximately 3 miles south of IU Health North Hospital, 4 miles east of St. Vincent Hospital, and 5 miles south of St. Vincent Carmel Hospital
- Features a private, landscaped interior courtyard
- Highly visible location with signage opportunities



Lakeview Medical Office Park
8902-9002 N Meridian St.
Indianapolis, IN 46260



CONTACT

Ross Goyer
EVP, Brokerage
317.288.9011

rgoyer@cornerstonecompaniesinc.com

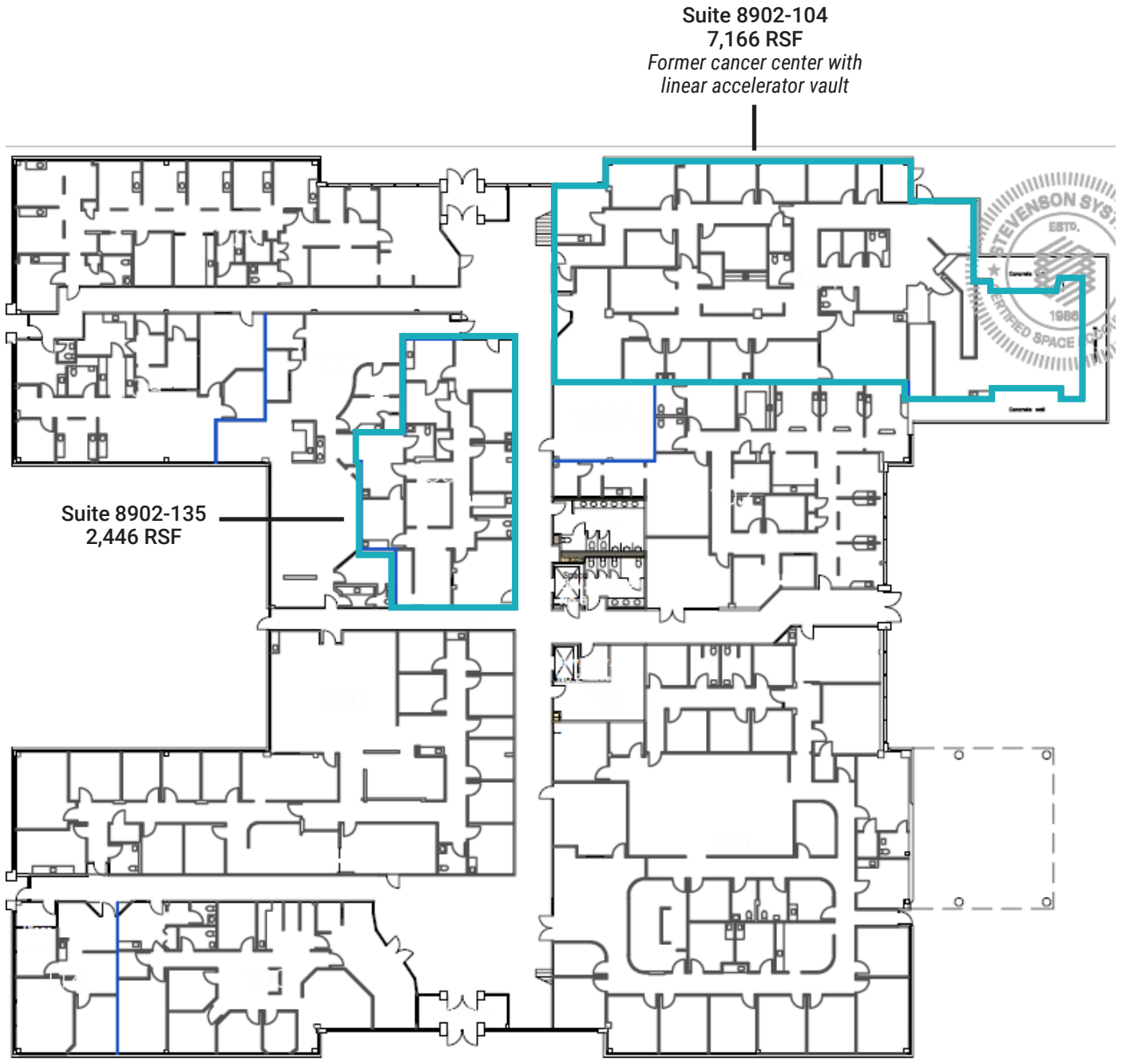


CORNERSTONE

FLOOR PLANS

Lakeview Medical Office Park
8902-9002 N Meridian St. Indianapolis, IN

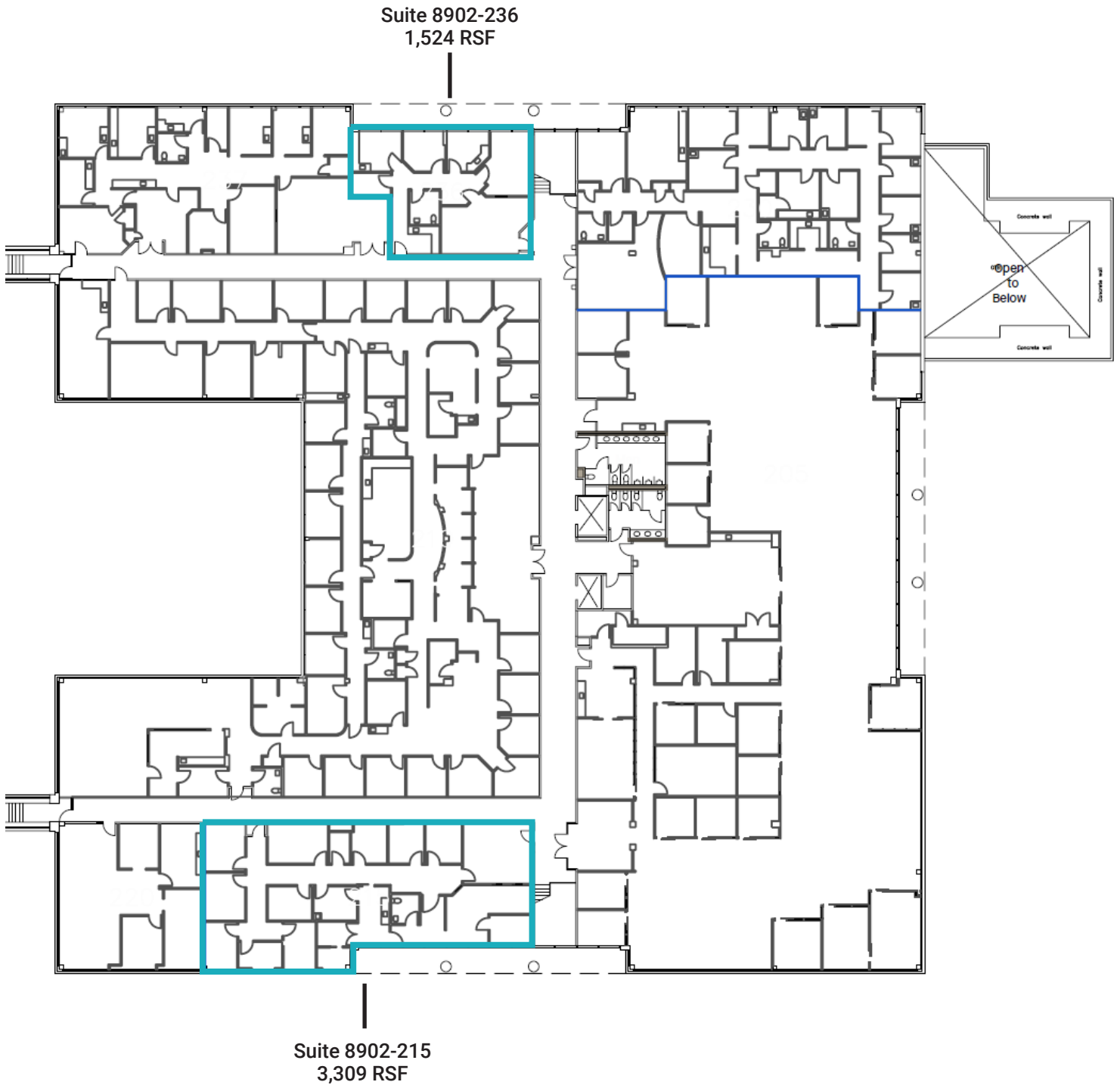
8902 N Meridian | 1st Floor



FLOOR PLANS

Lakeview Medical Office Park
8902-9002 N Meridian St. Indianapolis, IN

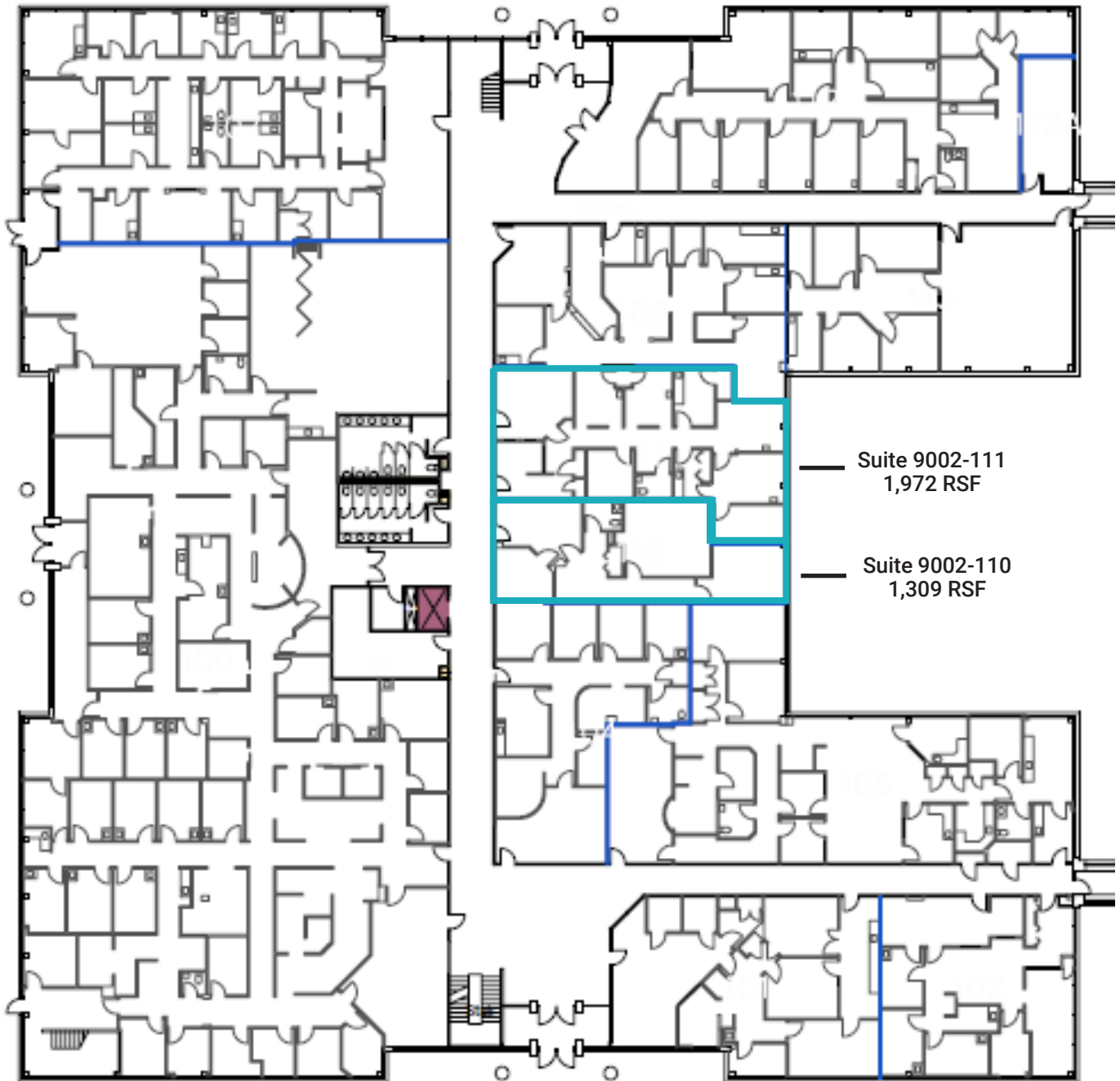
8902 N Meridian | 2nd Floor



FLOOR PLANS

Lakeview Medical Office Park
8902-9002 N Meridian St. Indianapolis, IN

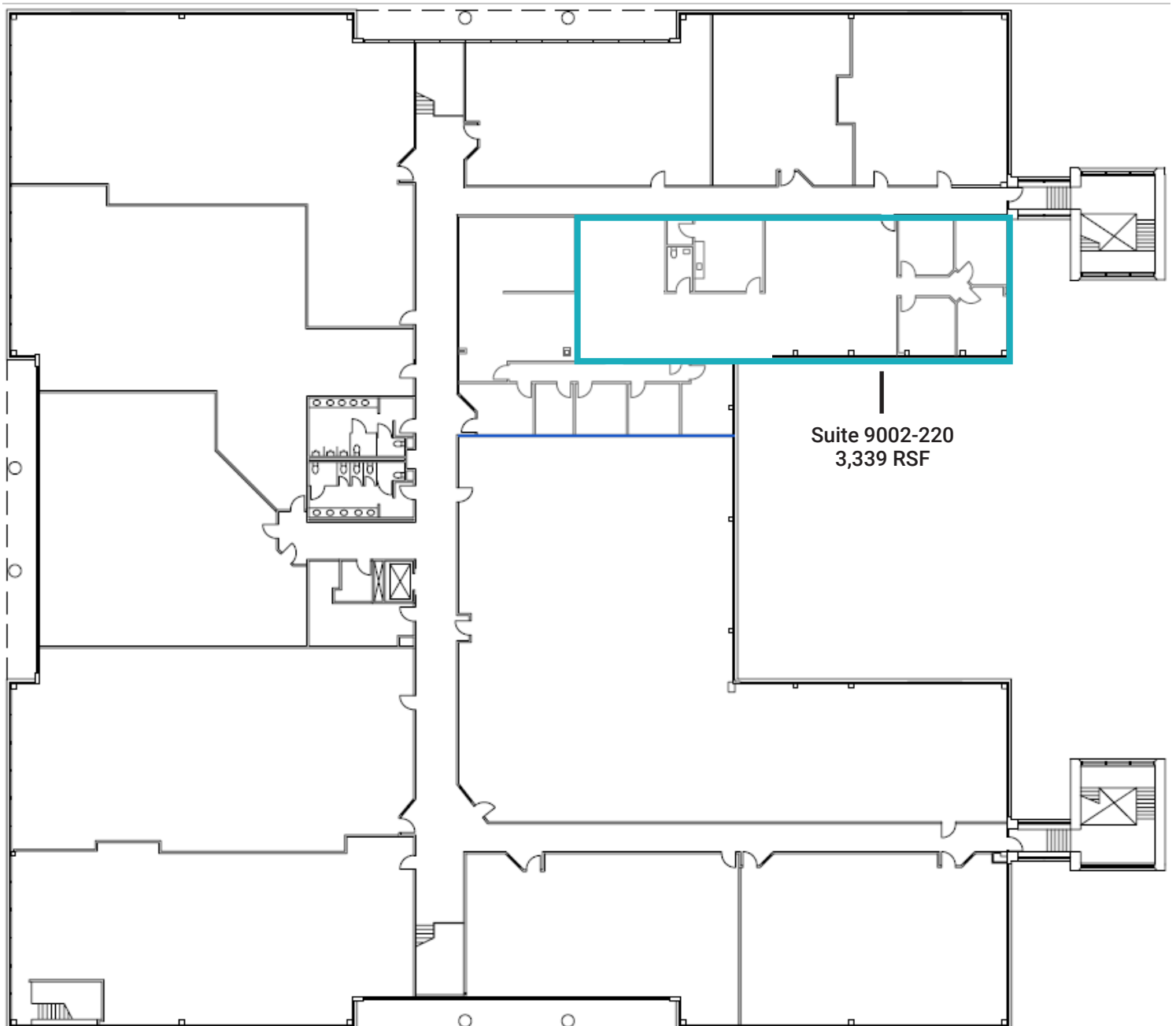
9002 N Meridian | 1st Floor



FLOOR PLANS

Lakeview Medical Office Park
8902-9002 N Meridian St. Indianapolis, IN

9002 N Meridian | 2nd Floor





DEMOGRAPHICS (5 - mile radius)



181,008
Population



38.7
Median Age



77,824
Households



\$82,092
Median Household Income

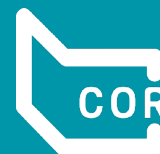


CONTACT

Ross Goyer
EVP, Brokerage
317.288.9011

rgoyer@cornerstonecompaniesinc.com

Cornerstone Companies, Inc.
8902 N Meridian Street, Suite 205
Indianapolis, IN 46260



CORNERSTONE