

FOR LEASE

LAKEVIEW MEDICAL OFFICE PARK



PROPERTY DETAILS



- Building Size: 179,733 RSF
- 27,633 RSF For Lease
- Highly sought-after location off 91st & Meridian Street with easy access to US 31 & I-465
- Within 5 miles of several major hospitals, including IU Health North Hospital, Ascension St. Vincent Indianapolis Hospital, Ascension St. Vincent Carmel Hospital, and Franciscan Health Carmel
- Building features an interior courtyard
- Highly visible location with signage opportunities



CONTACTS

Charles Yeo, CCIM, CPM
SVP, Brokerage
317.288.9006
cyeo@cciin.com

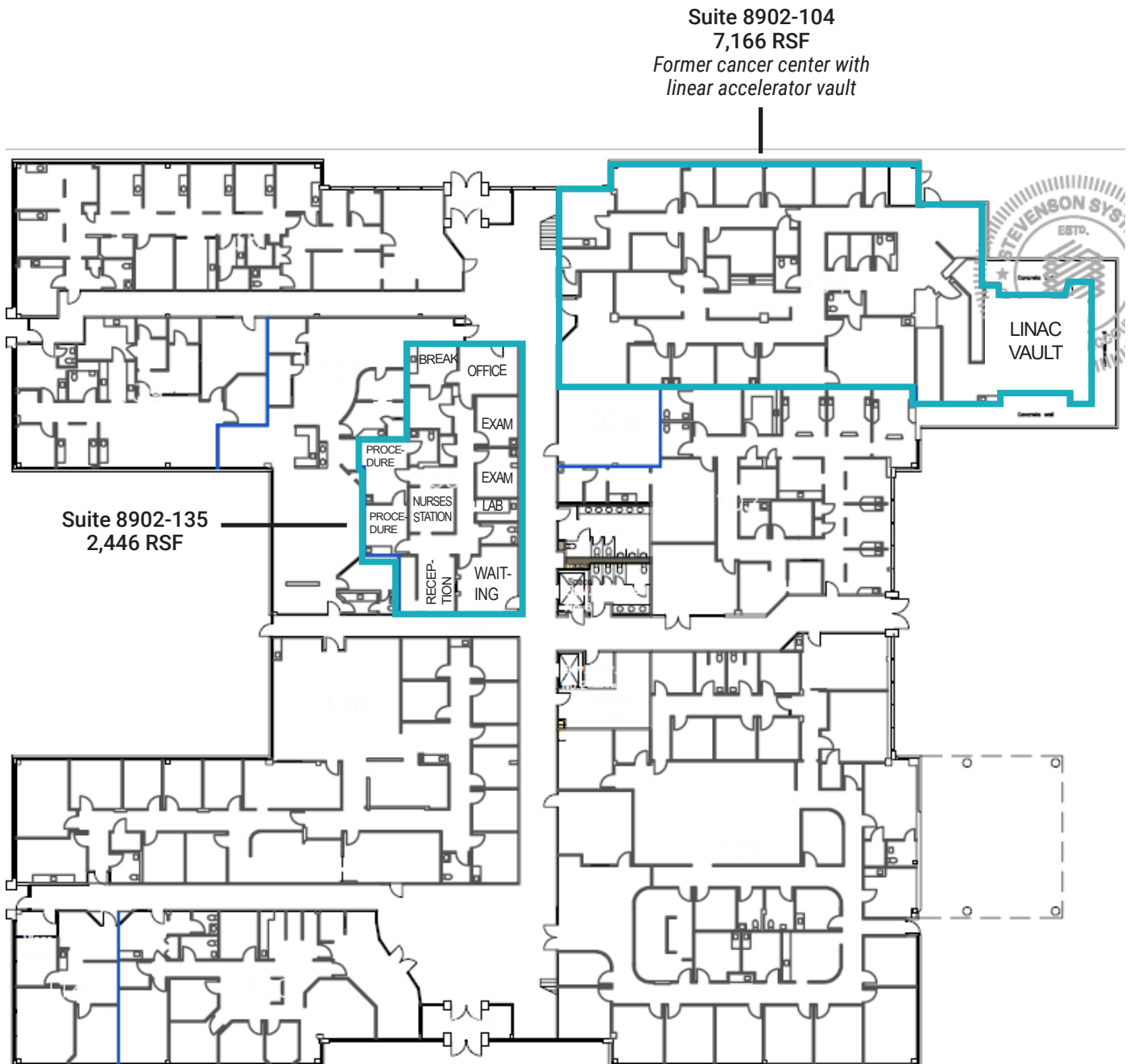
Jennifer McAllister
Brokerage Associate
317.288.9022
jmcallister@cciin.com



FLOOR PLANS

Lakeview Medical Office Park
8902-9002 N Meridian St. Indianapolis, IN

8902 N Meridian | 1st Floor

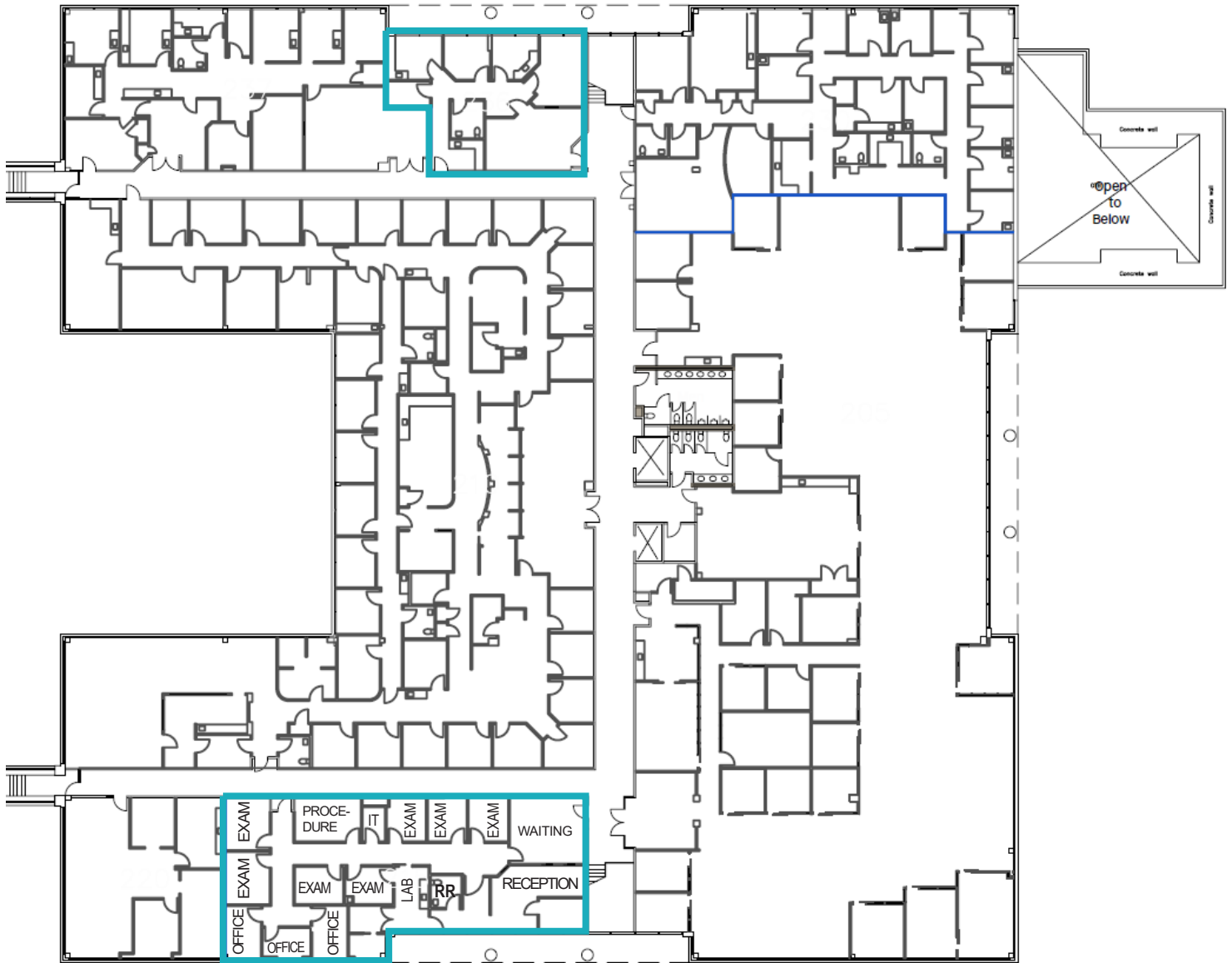


FLOOR PLANS

Lakeview Medical Office Park
8902-9002 N Meridian St. Indianapolis, IN

8902 N Meridian | 2nd Floor

Suite 8902-236
1,524 RSF



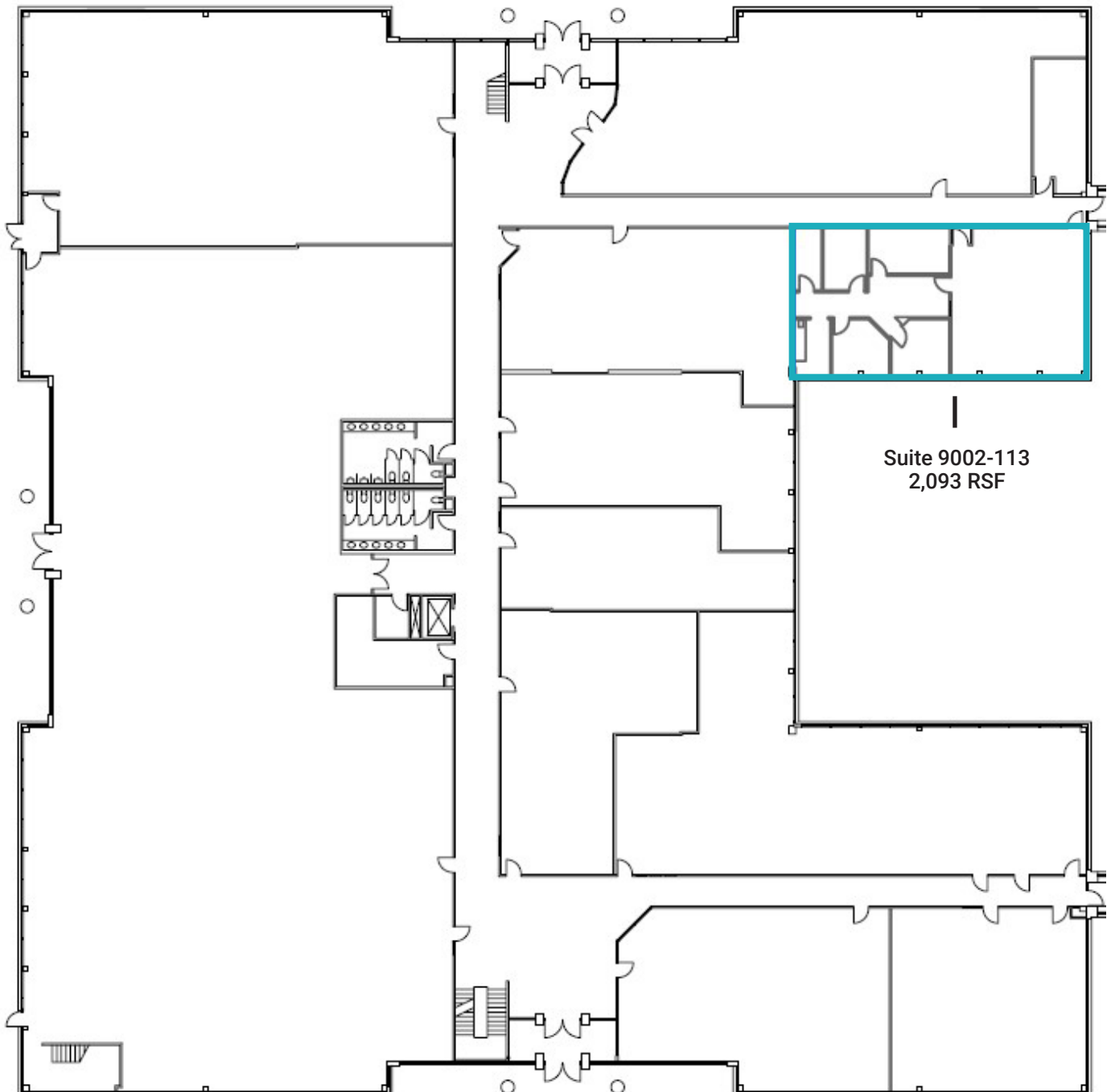
Suite 8902-215
3,309 RSF
Move-in ready medical office

FLOOR PLANS

Lakeview Medical Office Park
8902-9002 N Meridian St. Indianapolis, IN



9002 N Meridian | 1st Floor



FLOOR PLANS

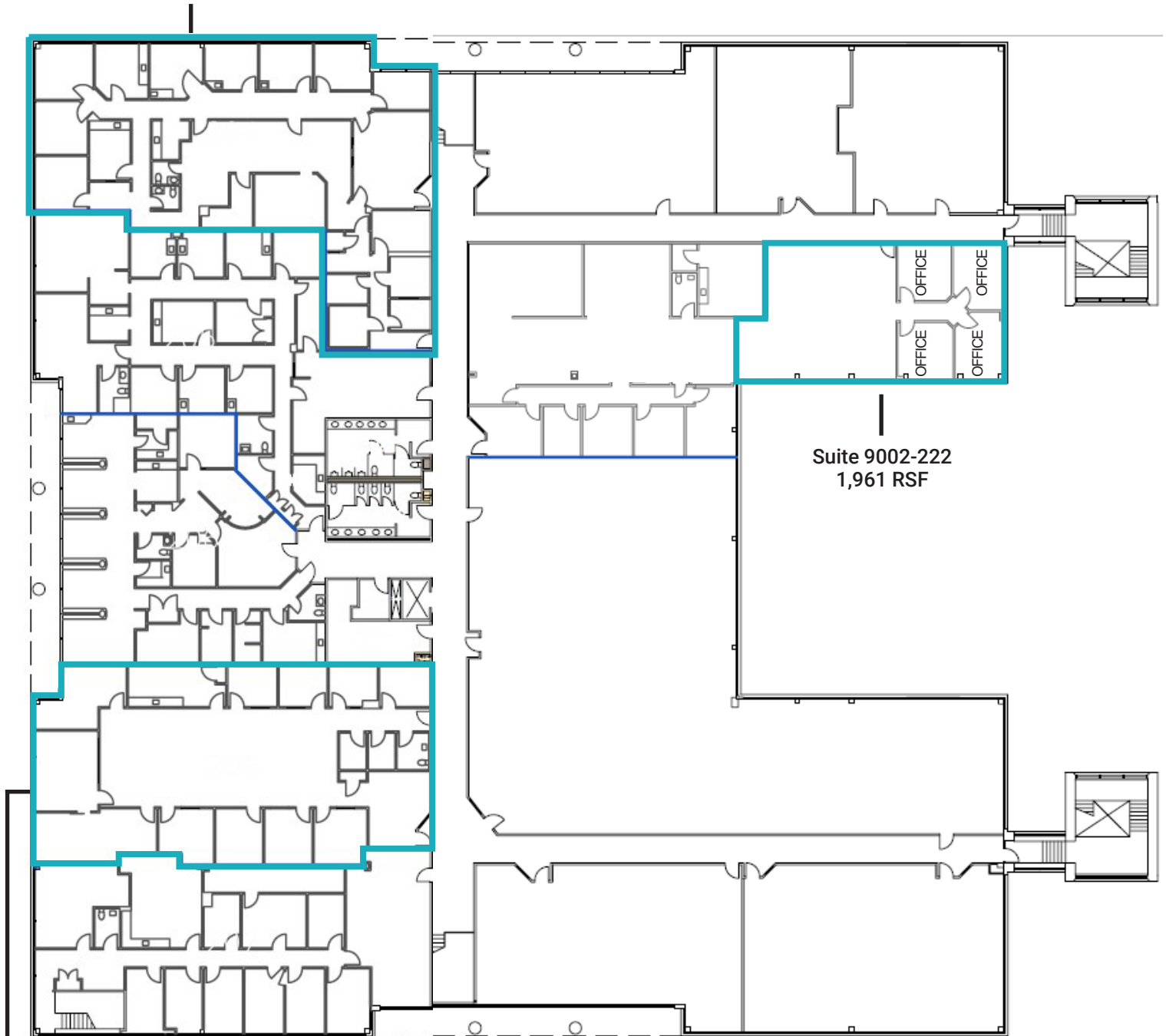
Lakeview Medical Office Park
8902-9002 N Meridian St. Indianapolis, IN

9002 N Meridian | 2nd Floor

Suite 9002-204
4,764 RSF

Suite 9002-222
1,961 RSF

Suite 9002-209
4,370 RSF





DEMOGRAPHICS (5 - mile radius)



181,008

Population



38.7

Median Age



77,824

Households



\$82,092

Median
Household
Income



CONTACTS

Charles Yeo, CCIM, CPM
SVP, Brokerage
317.288.9006
cyeo@cciin.com

Jennifer McAllister
Brokerage Associate
317.288.9022
jmcallister@cciin.com



CORNERSTONE