

# FOR LEASE

## LAKEVIEW MEDICAL OFFICE PARK



### PROPERTY DETAILS



- Building Size: 179,733 RSF
- 23,263 RSF For Lease
- Highly sought-after location off 91<sup>st</sup> & Meridian Street with easy access to US 31 & I-465
- Within 5 miles of several major hospitals, including IU Health North Hospital, Ascension St. Vincent Indianapolis Hospital, Ascension St. Vincent Carmel Hospital, and Franciscan Health Carmel
- Building features an interior courtyard
- Highly visible location with signage opportunities



**Lakeview Medical Office Park**  
8902-9002 N Meridian St.  
Indianapolis, IN 46260



### CONTACTS

**Charles Yeo, CCIM, CPM**  
SVP, Brokerage  
317.288.9006  
[cyeo@cciin.com](mailto:cyeo@cciin.com)

**Jennifer McAllister**  
Brokerage Associate  
317.288.9022  
[jmcallister@cciin.com](mailto:jmcallister@cciin.com)

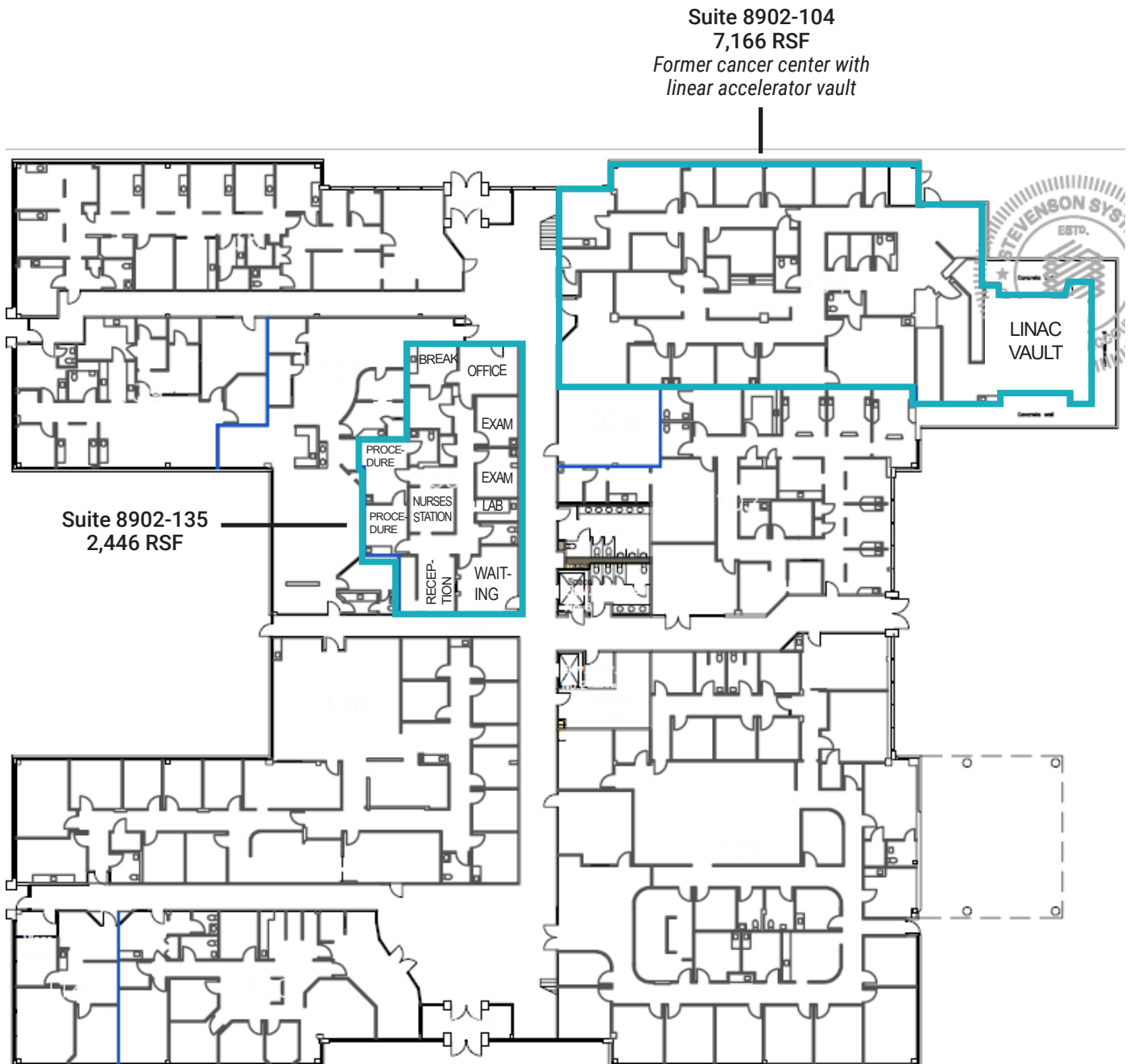


CORNERSTONE

# FLOOR PLANS

Lakeview Medical Office Park  
8902-9002 N Meridian St. Indianapolis, IN

## 8902 N Meridian | 1<sup>st</sup> Floor

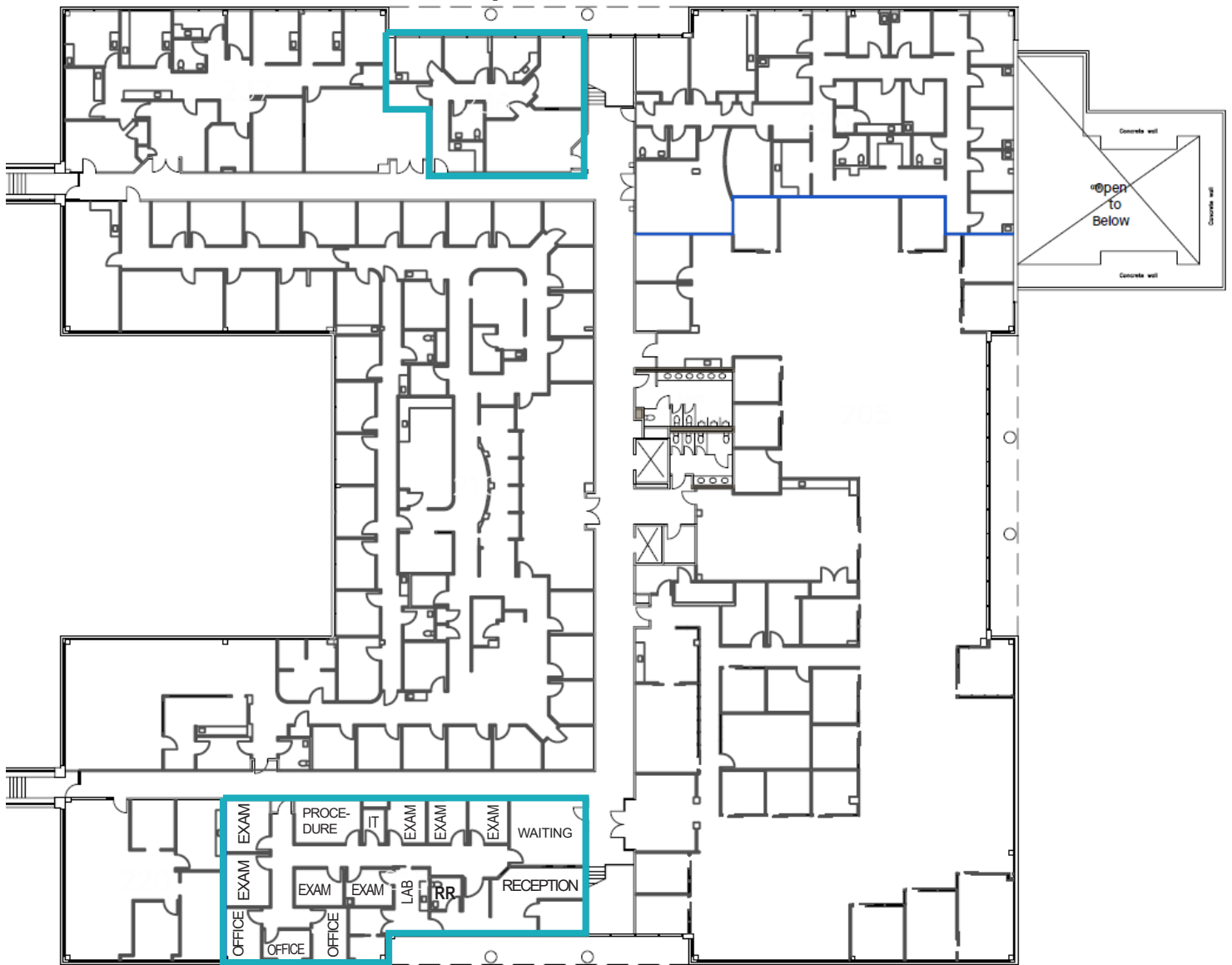


# FLOOR PLANS

Lakeview Medical Office Park  
8902-9002 N Meridian St. Indianapolis, IN

8902 N Meridian | 2<sup>nd</sup> Floor

Suite 8902-236  
1,524 RSF



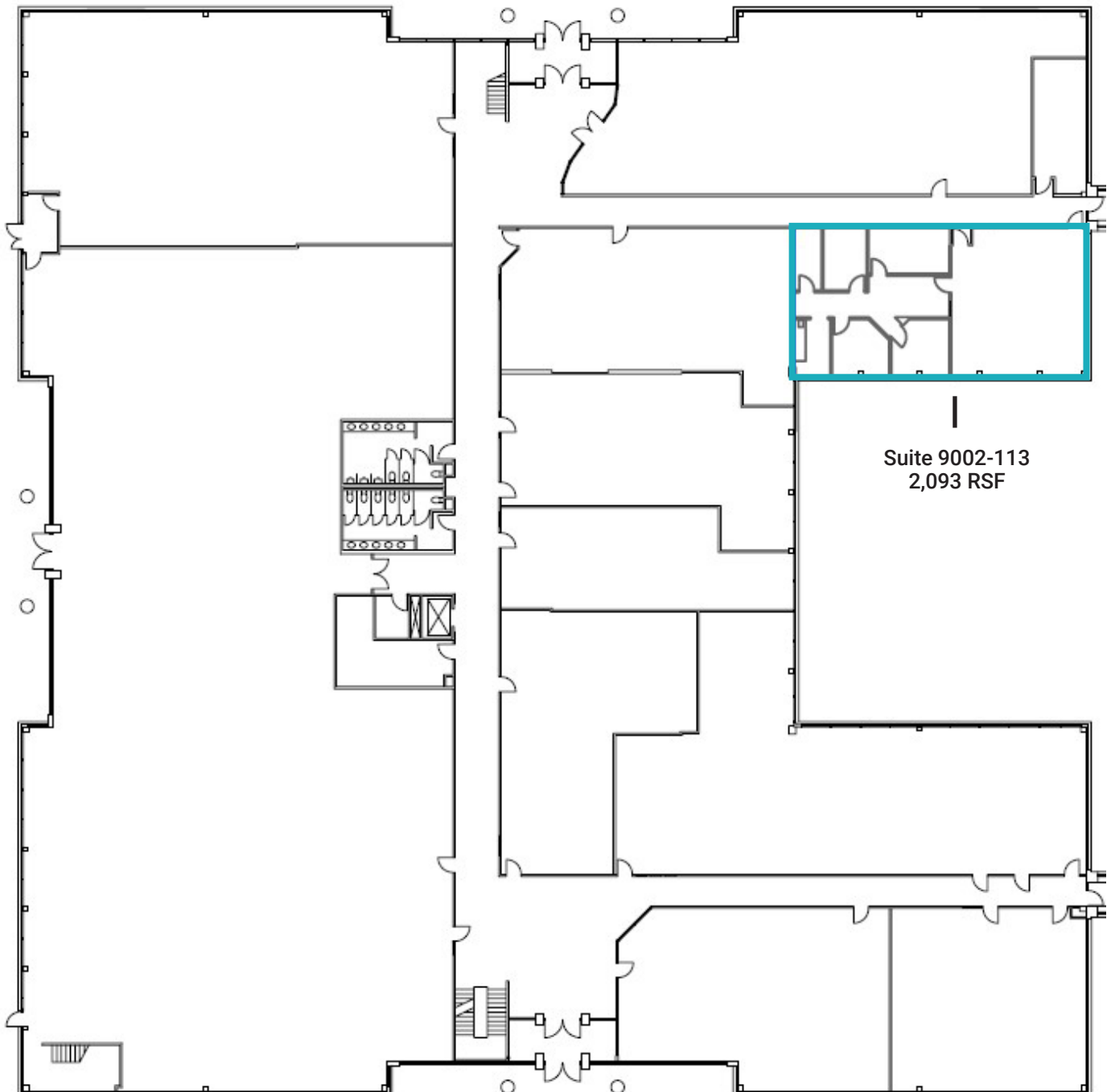
Suite 8902-215  
3,309 RSF  
*Move-in ready medical office*

# FLOOR PLANS

Lakeview Medical Office Park  
8902-9002 N Meridian St. Indianapolis, IN



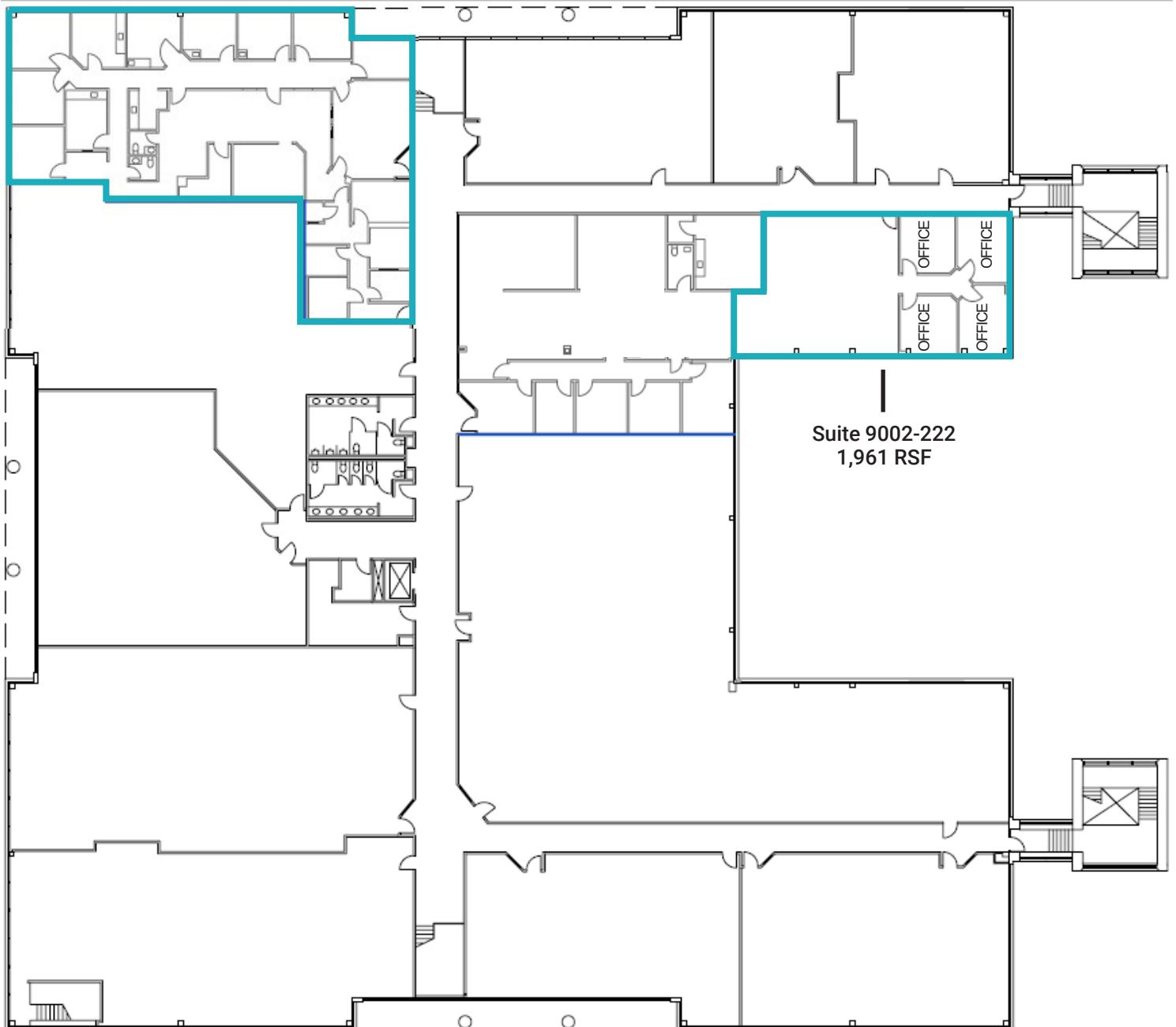
9002 N Meridian | 1<sup>st</sup> Floor





## 9002 N Meridian | 2<sup>nd</sup> Floor

Suite 9002-204  
4,764 RSF



Suite 9002-222  
1,961 RSF





## DEMOGRAPHICS (5 - mile radius)



181,008

Population



38.7

Median Age



77,824

Households



\$82,092

Median  
Household  
Income



## CONTACTS

Charles Yeo, CCIM, CPM  
SVP, Brokerage  
317.288.9006  
[cyeo@cciin.com](mailto:cyeo@cciin.com)

Jennifer McAllister  
Brokerage Associate  
317.288.9022  
[jmcallister@cciin.com](mailto:jmcallister@cciin.com)



CORNERSTONE