



FOR LEASE

PROPERTY HIGHLIGHTS:

- Building Size: 179,733 RSF
- 23,000 RSF Available For Lease
- Conveniently located off 91st and Meridian Street
- Highly sought-after location with easy access to US 31 and I-465
- Sits approximately 3 miles south of IU Health North Hospital, 4 miles east of St. Vincent Hospital, and 5 miles south of St. Vincent Carmel Hospital
- Features a private, landscaped center courtyard

8902-9002 N MERIDIAN ST.
INDIANAPOLIS, IN 46260

CONTACT:

Ross Goyer
EVP, Brokerage
317.288.9011
rgoyer@cciin.com

CORNERSTONE COMPANIES, INC.
8902 N Meridian Street, Suite 205
Indianapolis, IN 46260



For more, visit: CornerstoneCompaniesInc.com

8902:1ST FLOOR

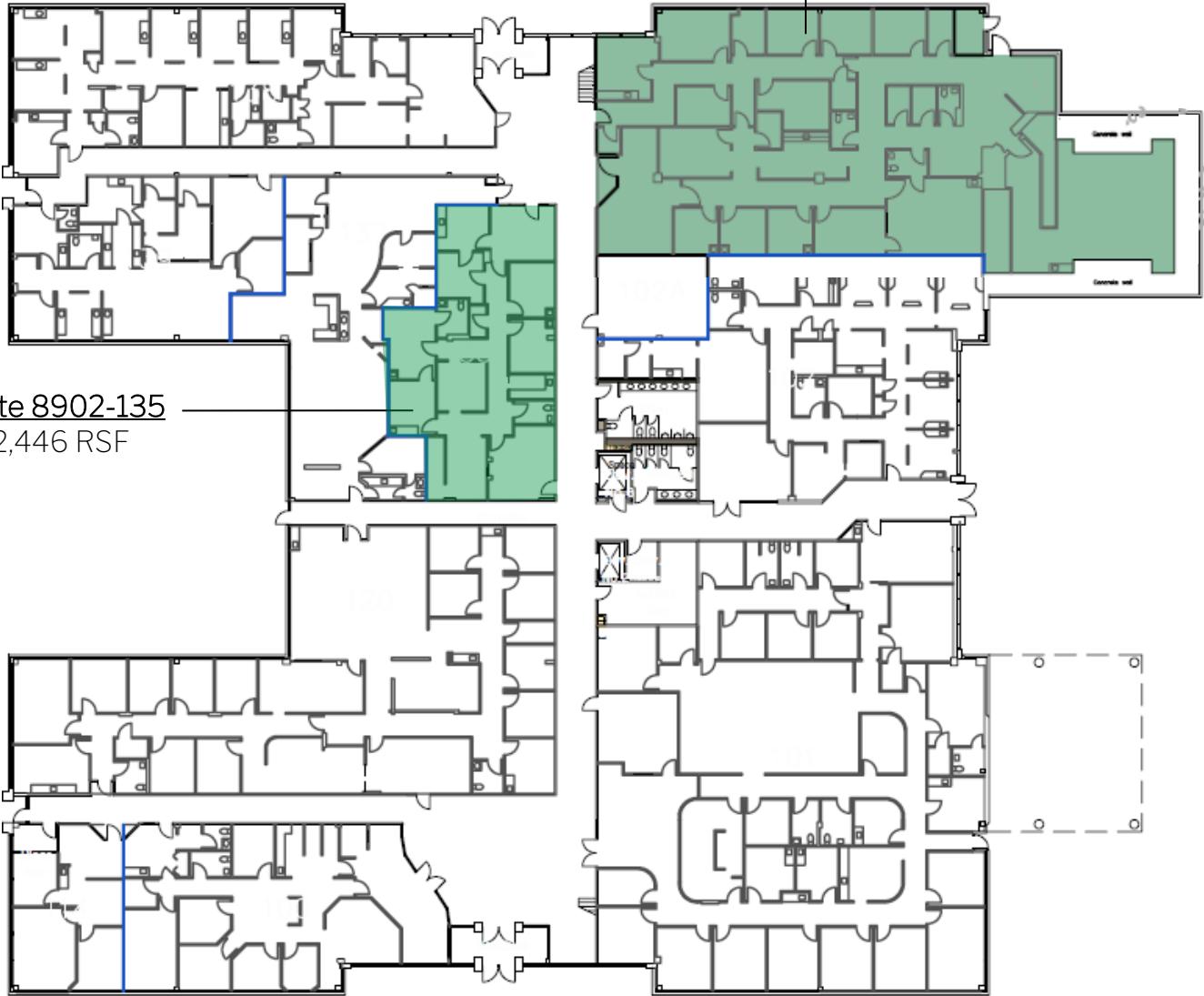
LAKEVIEW MEDICAL PLAZA
8902 & 9002 N. MERIDIAN STREET | INDIANAPOLIS, IN 46260

Suite 8902-104

7,166 RSF

*Former cancer center with
linear accelerator vault*

Suite 8902-135
2,446 RSF

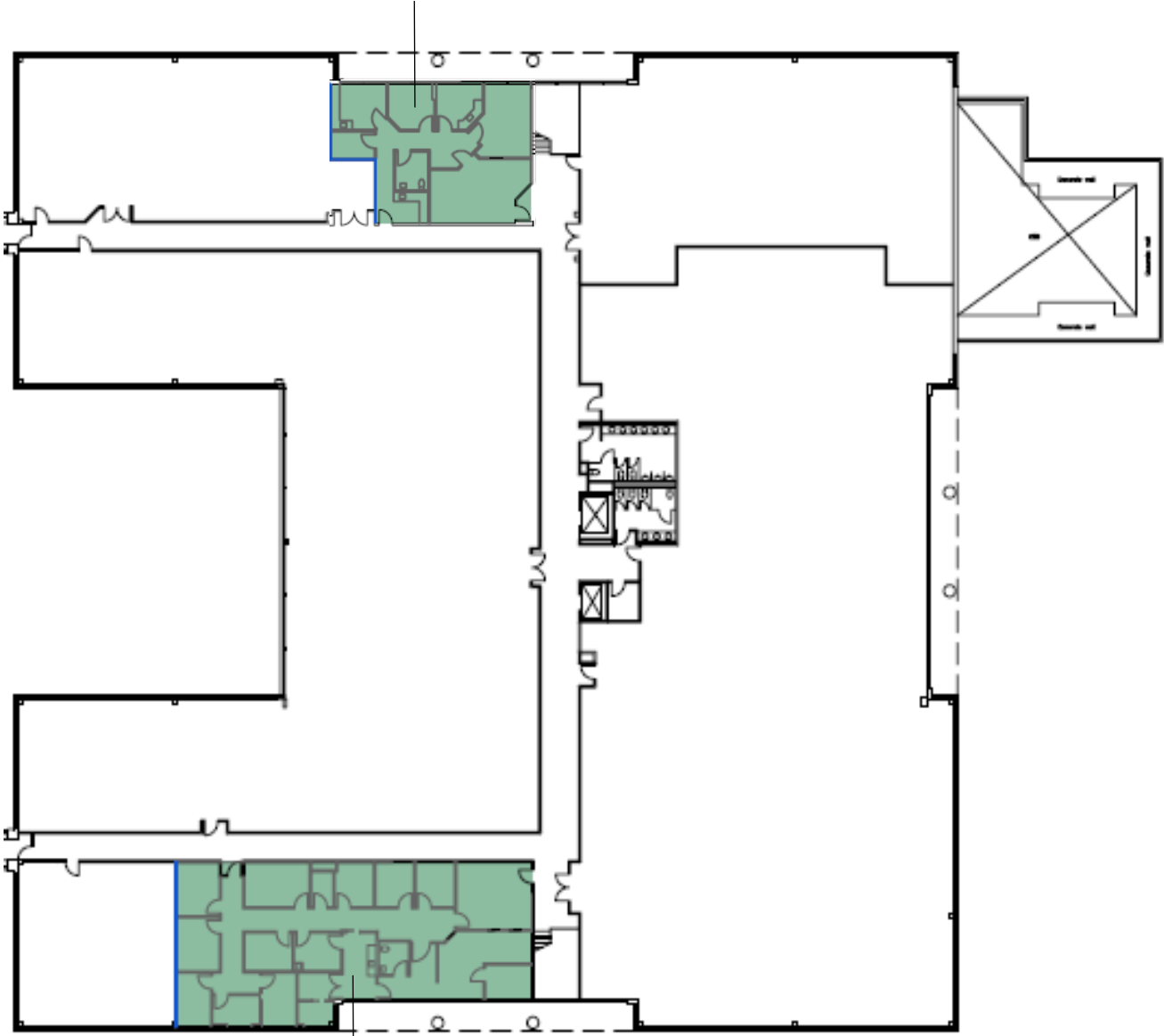


For more, visit: CornerstoneCompaniesInc.com

8902: 2ND FLOOR

LAKEVIEW MEDICAL PLAZA
8902 & 9002 N. MERIDIAN STREET | INDIANAPOLIS, IN 46260

Suite 8902-236
1,524 RSF



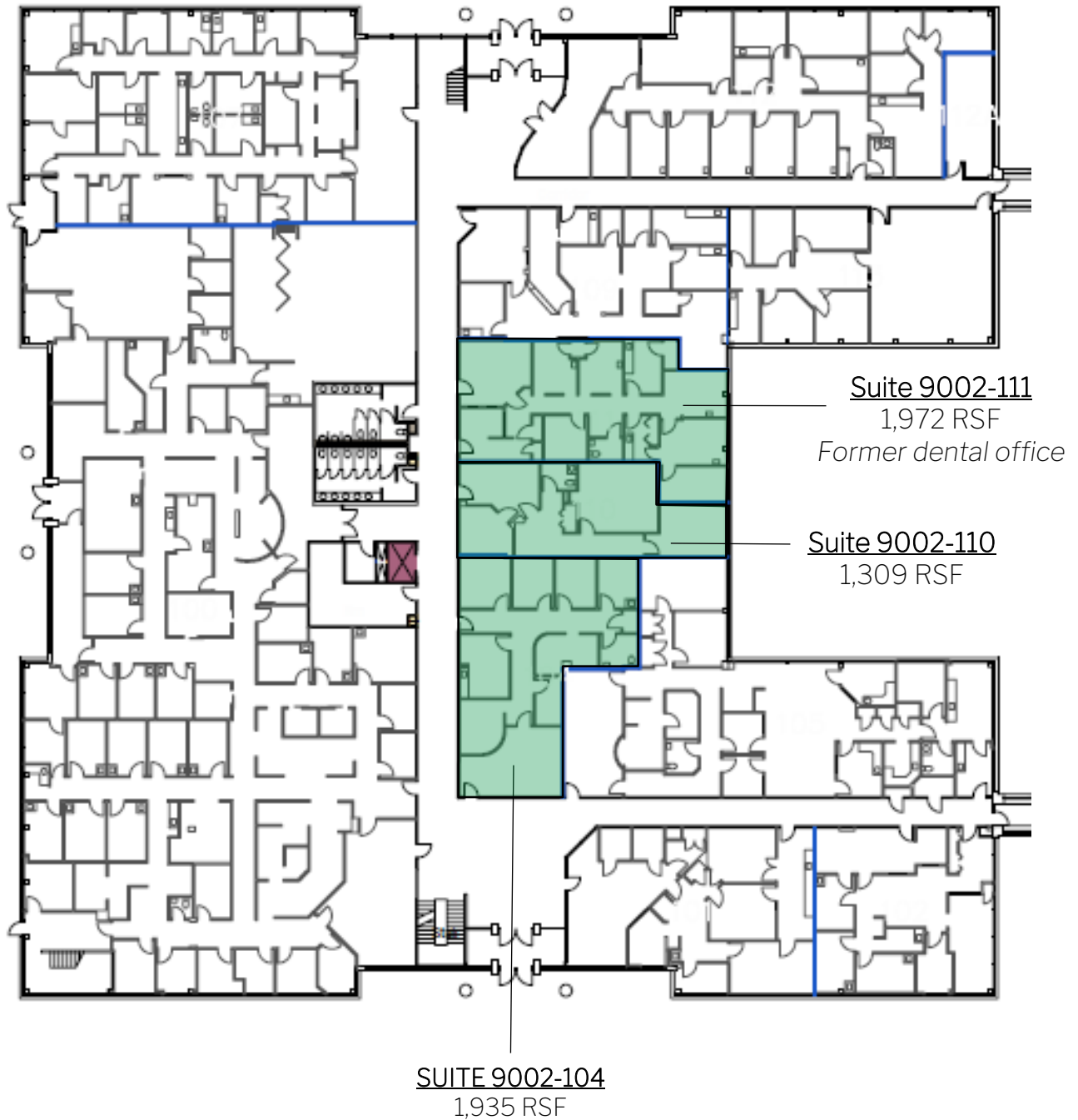
Suite 8902-215
3,309 RSF



For more, visit: CornerstoneCompaniesInc.com

9002:1ST FLOOR

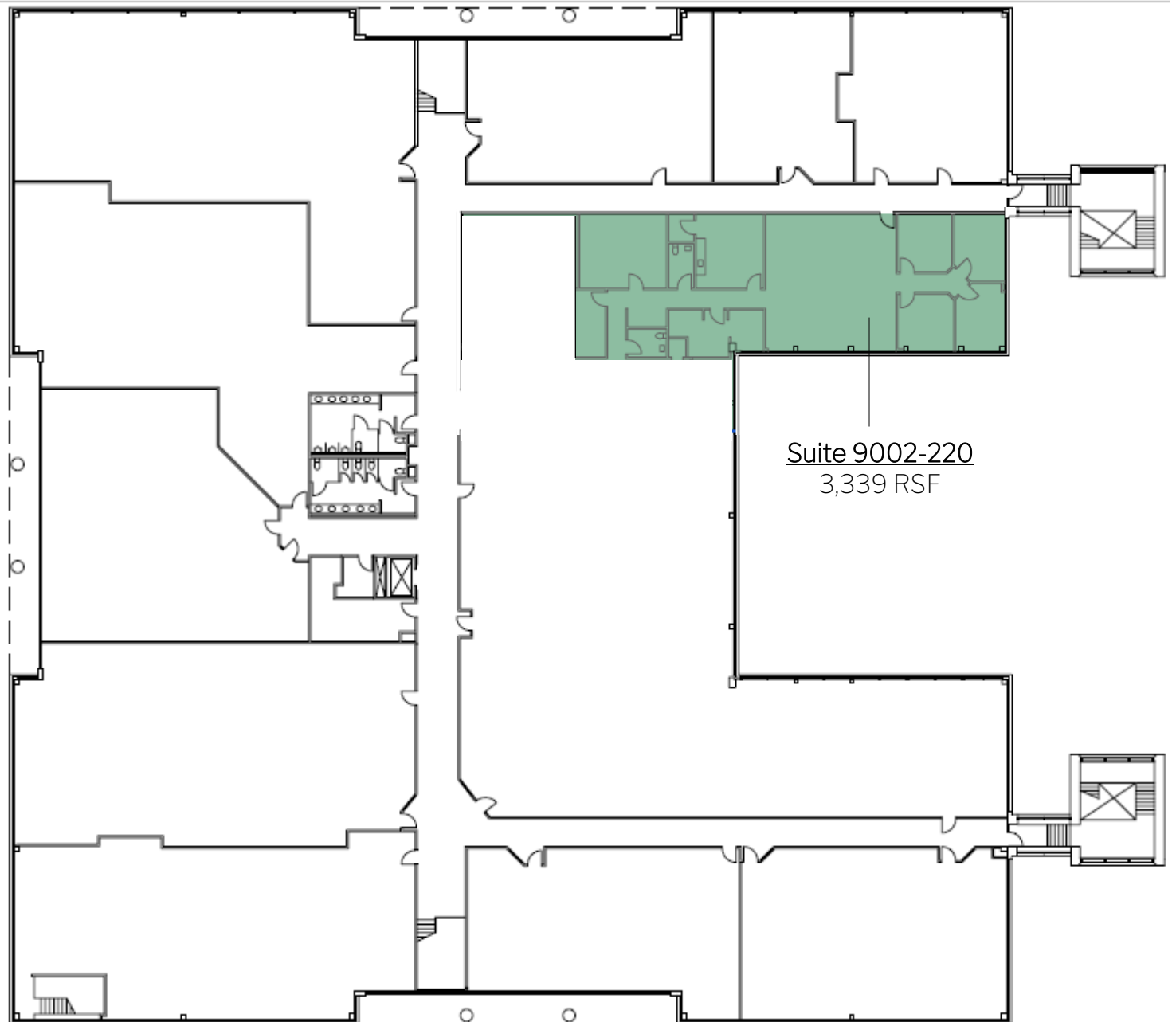
LAKEVIEW MEDICAL PLAZA
8902 & 9002 N. MERIDIAN STREET | INDIANAPOLIS, IN 46260



For more, visit: CornerstoneCompaniesInc.com

9002: 2ND FLOOR

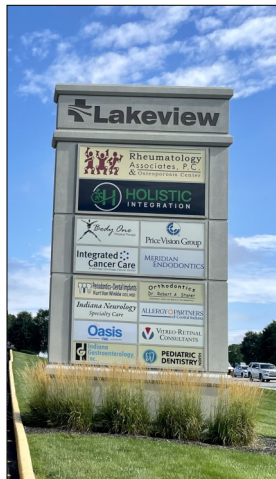
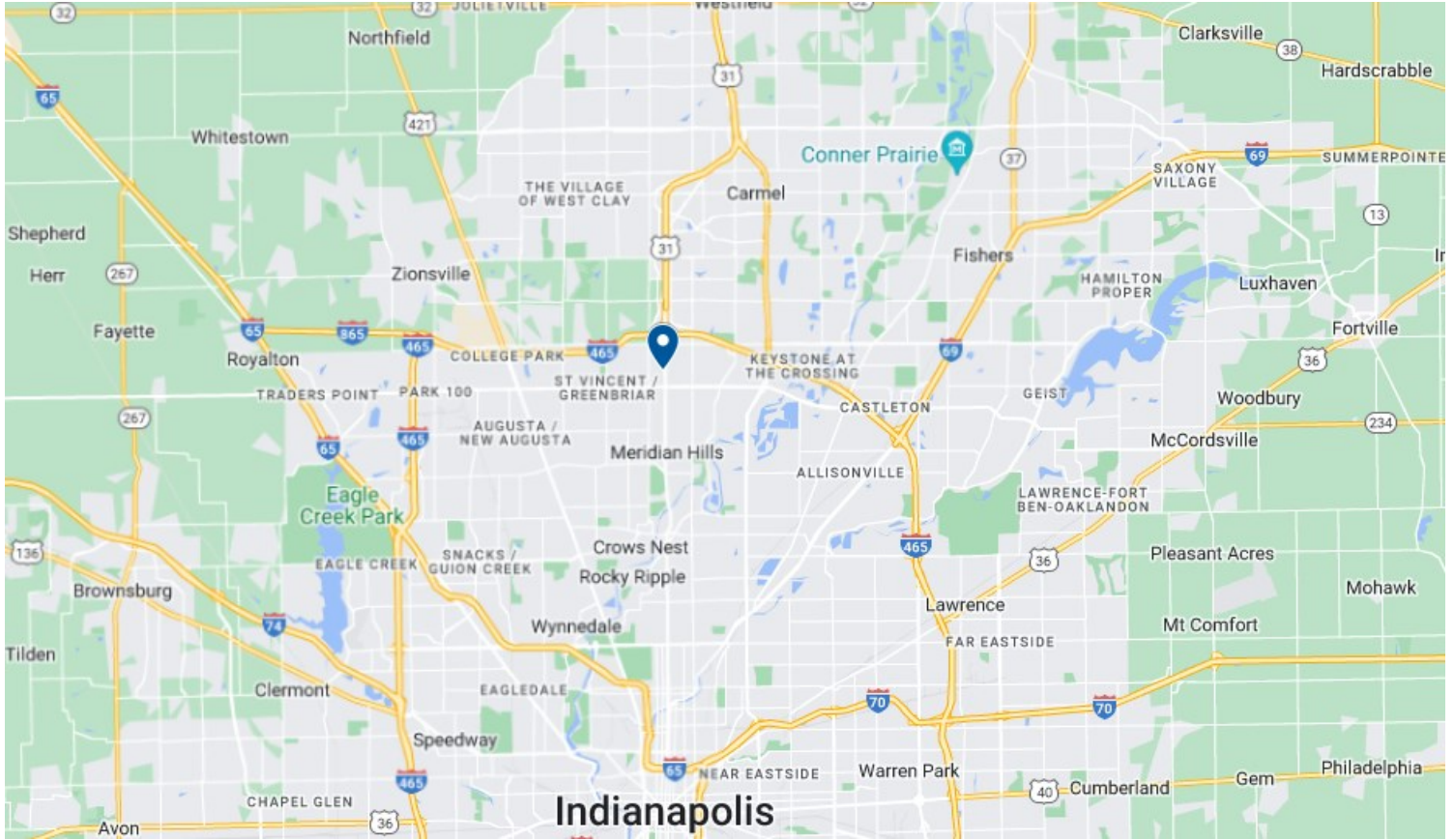
LAKEVIEW MEDICAL PLAZA
8902 & 9002 N. MERIDIAN STREET | INDIANAPOLIS, IN 46260



For more, visit: CornerstoneCompaniesInc.com

LOCATION

LAKEVIEW MEDICAL PLAZA
8902 & 9002 N. MERIDIAN STREET | INDIANAPOLIS, IN 46260



For more, visit: CornerstoneCompaniesInc.com