



## PROPERTY HIGHLIGHTS

- 23,910 RSF of medical office space available
- Situated just off 86th Street & Township Line Road
- Competitive rental rates and tenant construction allowances
- Adjacent to the Ascension St. Vincent Indianapolis Hospital & the Ascension St. Vincent Women's Hospital
- Less than 10 miles from the IU Health North Hospital, IU Health Methodist Hospital, and OrthoIndy Hospital



## CONTACT

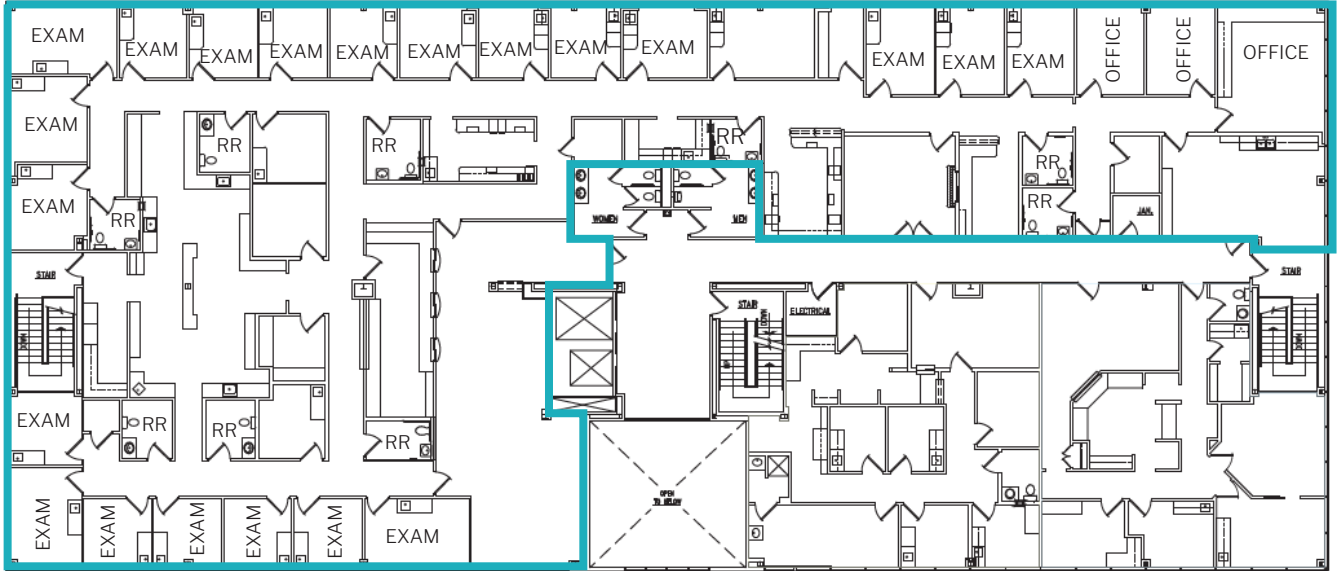
**Charles J. Yeo, CCIM, CPM**  
Senior Vice President, Brokerage  
317.288.9006  
CYeo@cciin.com

Cornerstone Companies, Inc.  
8902 N Meridian Street, Suite 205, Indianapolis, IN  
CornerstoneCompaniesInc.com | 317.841.9900

# FLOOR PLANS

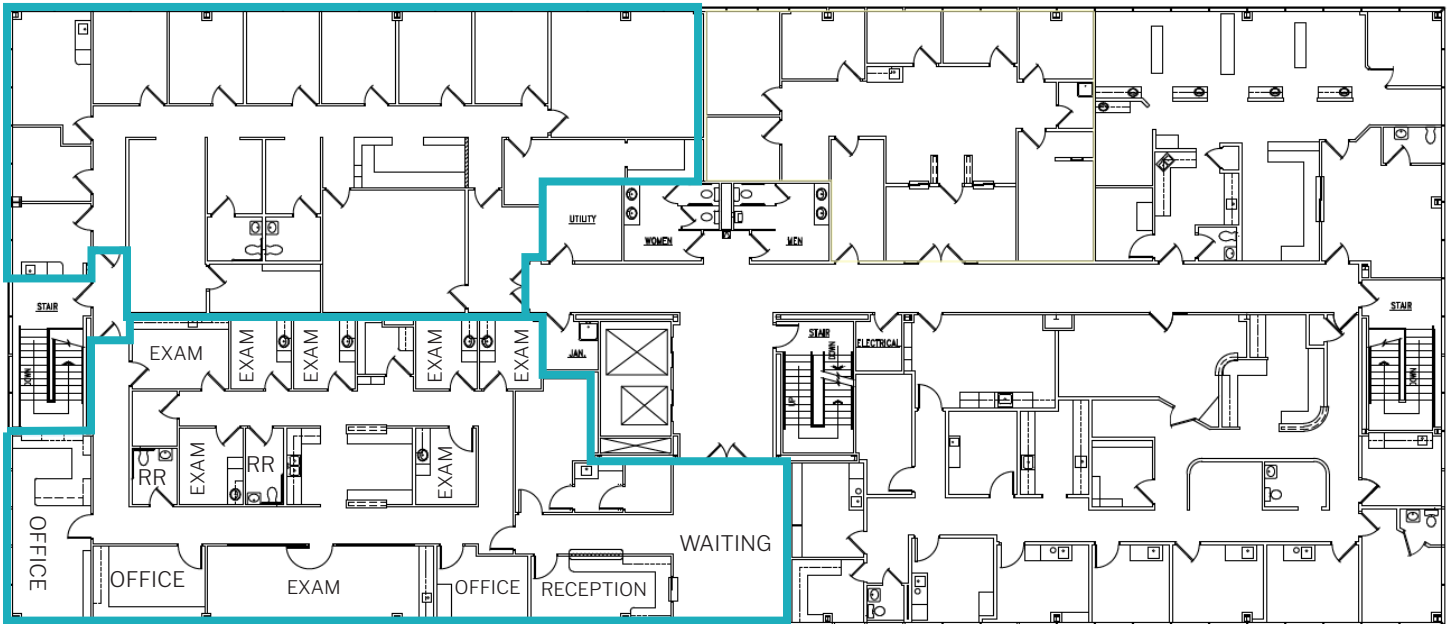
## 2ND FLOOR

Suite 200-220: 10,763 SF (*divisible*)



## 3RD FLOOR

Suite 320: 3,588 SF

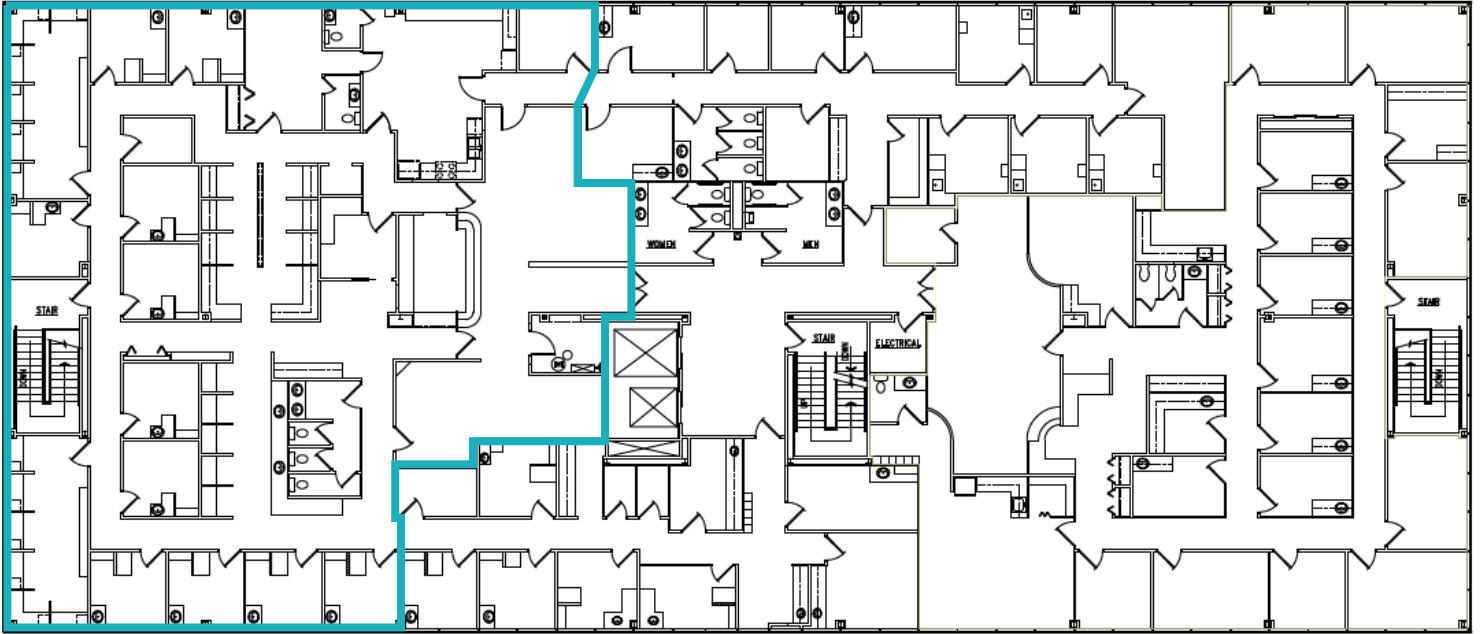


Suite 300: 3,868 SF

# FLOOR PLANS

## 4TH FLOOR

Suite 450: 5,691 SF





## OFFICE PARK LOCATION


\* Demographics within 5 mi

 168,611  
Population

 38.5  
Median Age

 72,699  
Households

 \$54,707  
Per Capita  
Income

 \$80,829  
Median  
Household  
Income

 CONTACT

**Charles J. Yeo, CCIM, CPM**  
Senior Vice President, Brokerage  
317.288.9006  
CYeo@cciin.com

 CORNERSTONE

© 2023 Cornerstone Companies, Inc. All rights reserved. Although the information contained herein has been obtained from sources deemed reliable, Owner, Cornerstone Companies, Inc., and/or their representatives, brokers or agents make no representation or warranty as to its accuracy or completeness. Any