

FOR LEASE

 8220 & 8240 Naab Rd, Indianapolis, IN 46260



PROPERTY HIGHLIGHTS

- 25,986 SF of Medical Office Space For Lease
- Max. Contiguous: 10,763 SF | Min. Divisible: 1,286 SF
- Located just off 86th Street & Township Line Road
- Prime healthcare setting; situated on the Ascension St. Vincent Hospital Campus and within 10 miles of several major hospitals, including IU Health North Hospital, Ascension St. Vincent Heart Center, IU Health Methodist Hospital, and Community Hospital North
- Competitive rental rates and tenant improvement allowances
- Recently completed building improvements including newly painted exterior, new landscaping, and common area upgrades

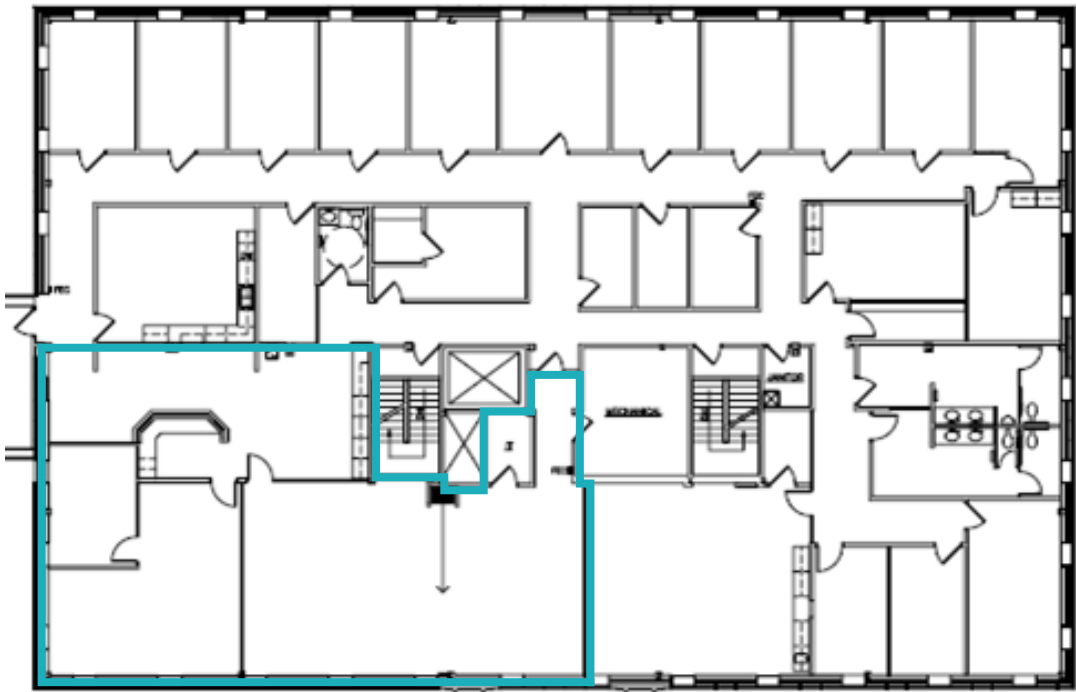


CONTACT

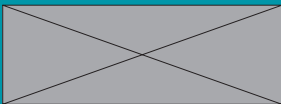
Charles J. Yeo, CCIM, CPM
Senior Vice President, Brokerage
317.288.9006
CYeo@cciin.com

Jennifer McAllister
Associate, Brokerage
317.288.9022
JMcAllister@cciin.com

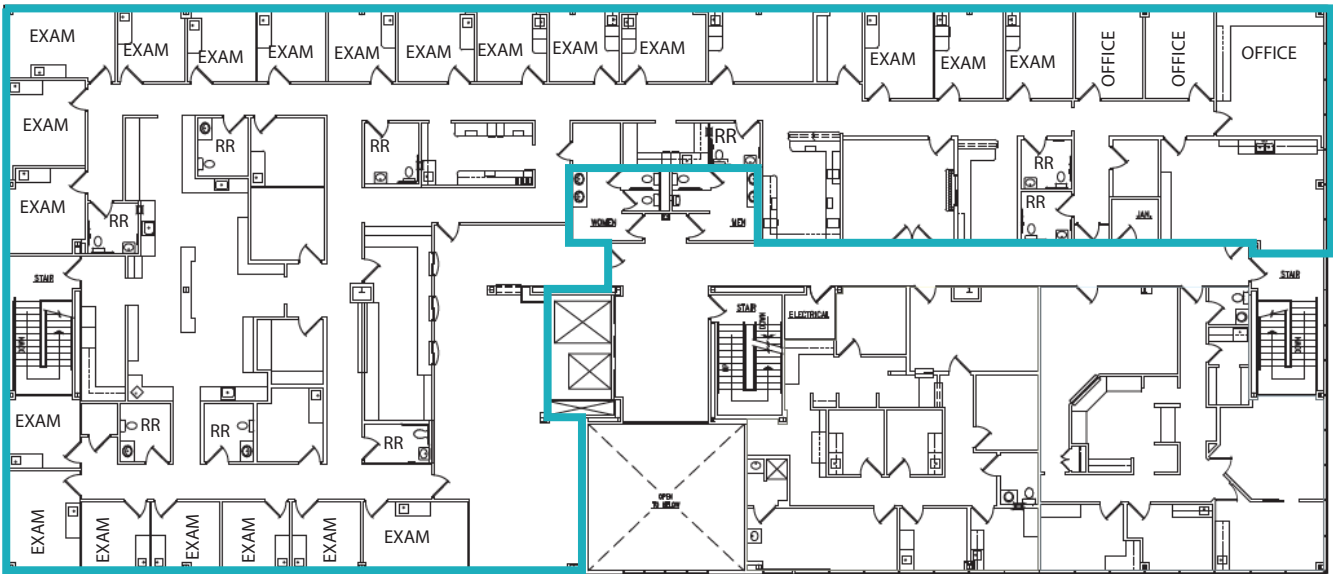
Cornerstone Companies, Inc.
8902 N Meridian Street, Suite 205, Indianapolis, IN
CornerstoneCompaniesInc.com | 317.841.9900



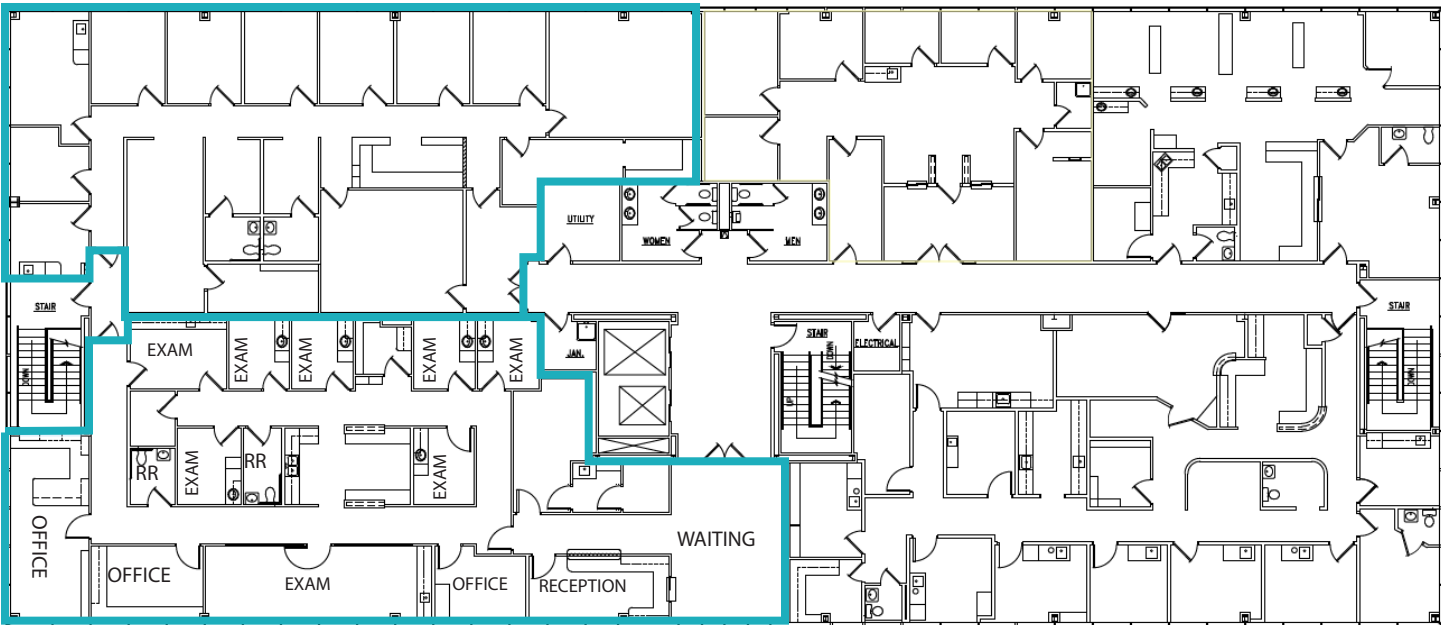
Suite 205
2,531 SF



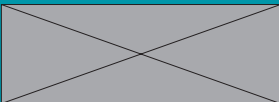
Suite 200-220: 10,763 SF (divisible)



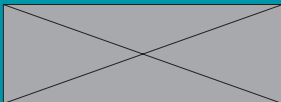
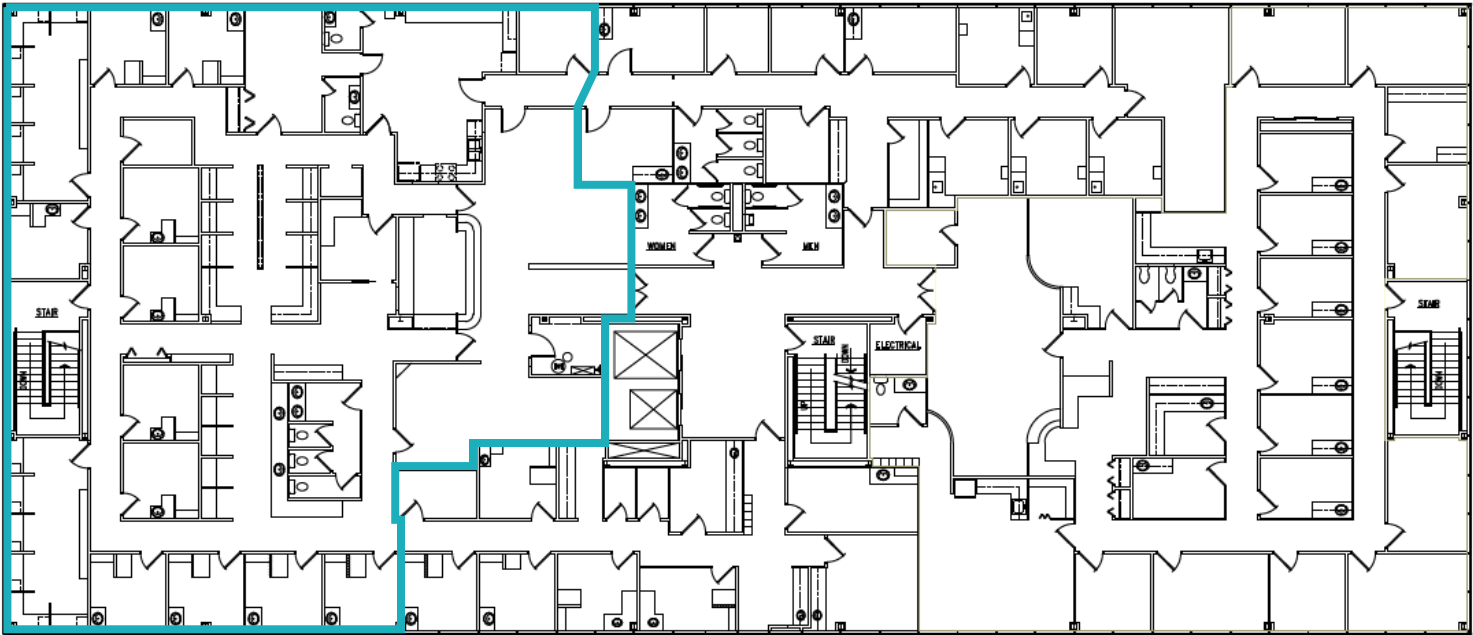
Suite 320: 3,588 SF



Suite 300: 3,868 SF



Suite 450: 5,691 SF



Peyton Manning
Children's Hospital
Pediatric Neurology



Ascension

86th St

NAAB RD

DUGAN DR

DUGAN DR

8240

8220

8260

DEMOGRAPHICS

*within 5 mi radius



168,611

Population



38.5

Median Age



72,699

Households



\$54,707

Per Capita
Income



\$80,829

Median
Household
Income



CONTACT

Charles J. Yeo, CCIM, CPM
Senior Vice President, Brokerage
317.288.9006
cyeo@cciin.com

Jennifer McAllister
Associate, Brokerage
317.288.9022
jmcallister@cciin.com



CORNERSTONE

© 2023 Cornerstone Companies, Inc. All rights reserved. Although the information contained herein has been obtained from sources deemed reliable, Owner, Cornerstone Companies, Inc., and/or their representatives, brokers or agents make no representation or warranty as to its accuracy or completeness. Any reliance on this information is solely at your own risk.