



# FOR LEASE

## PROPERTY HIGHLIGHTS:

- Building Size: 25,360 SF
- For Lease: 5,599 RSF medical office
- Located on Allisonville Road just north of 106th Street
- Easily accessible from I-69 in Fishers
- Less than 10 minutes from Downtown Fishers
- Located less than 10 miles from the Community Hospital Campus, IU North, and St. Vincent Carmel

10995 ALLISONVILLE ROAD  
FISHERS, IN

## CONTACT

Ross Goyer  
Executive Vice President  
317.288.9011  
RGoyer@cciin.com

## CORNERSTONE COMPANIES, INC.

8902 N. Meridian Street, Suite 205  
Indianapolis, IN 46260

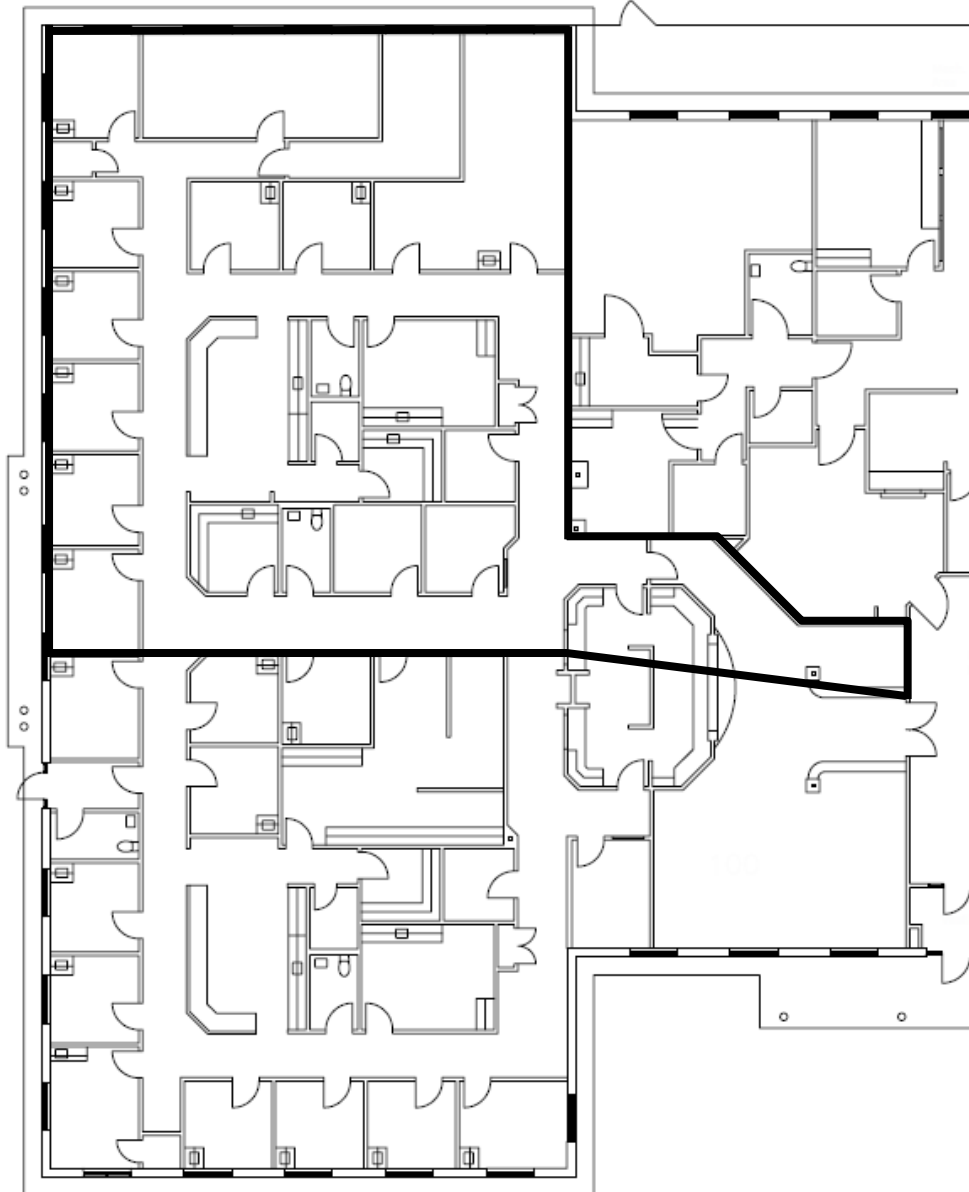


For more, visit: [CornerstoneCompaniesInc.com](http://CornerstoneCompaniesInc.com)

# FLOOR PLAN

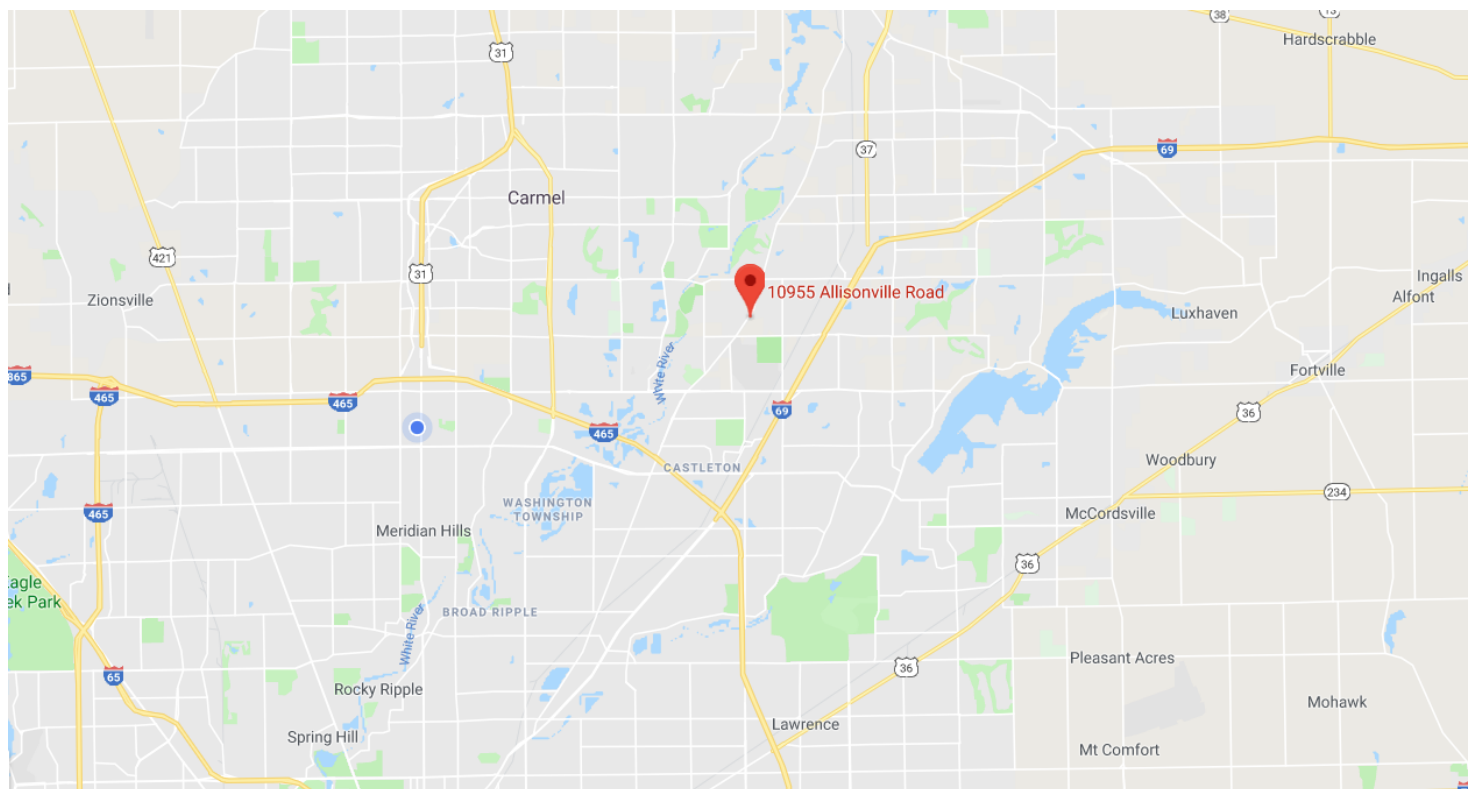
---

Suite 100  
5,599 SF



For more, visit: [CornerstoneCompaniesInc.com](http://CornerstoneCompaniesInc.com)

# LOCATION



For more, visit: [CornerstoneCompaniesInc.com](http://CornerstoneCompaniesInc.com)