



# FOR LEASE

## PROPERTY HIGHLIGHTS:

- Building Size: 38,865 SF
- 4,141 RSF of space available for lease.
- Located on River Road, just one mile east of downtown Noblesville
- Easily accessible from US HWY38 and USHWY 32
- Less than a half mile from Riverview Health Hospital Noblesville Campus
- Less than 10 miles from IU Health Saxony and St. Vincent Fishers
- Covered patient drop-off

## NOBLESVILLE MEDICAL ARTS BUILDING

18051 RIVER ROAD  
NOBLESVILLE, IN 46062

### CONTACT:

Charles J. Yeo  
Vice President  
317.288.9006  
CYeo@CornerstoneCompaniesInc.com

**CORNERSTONE COMPANIES, INC**  
8902 N. Meridian Street, Suite 205

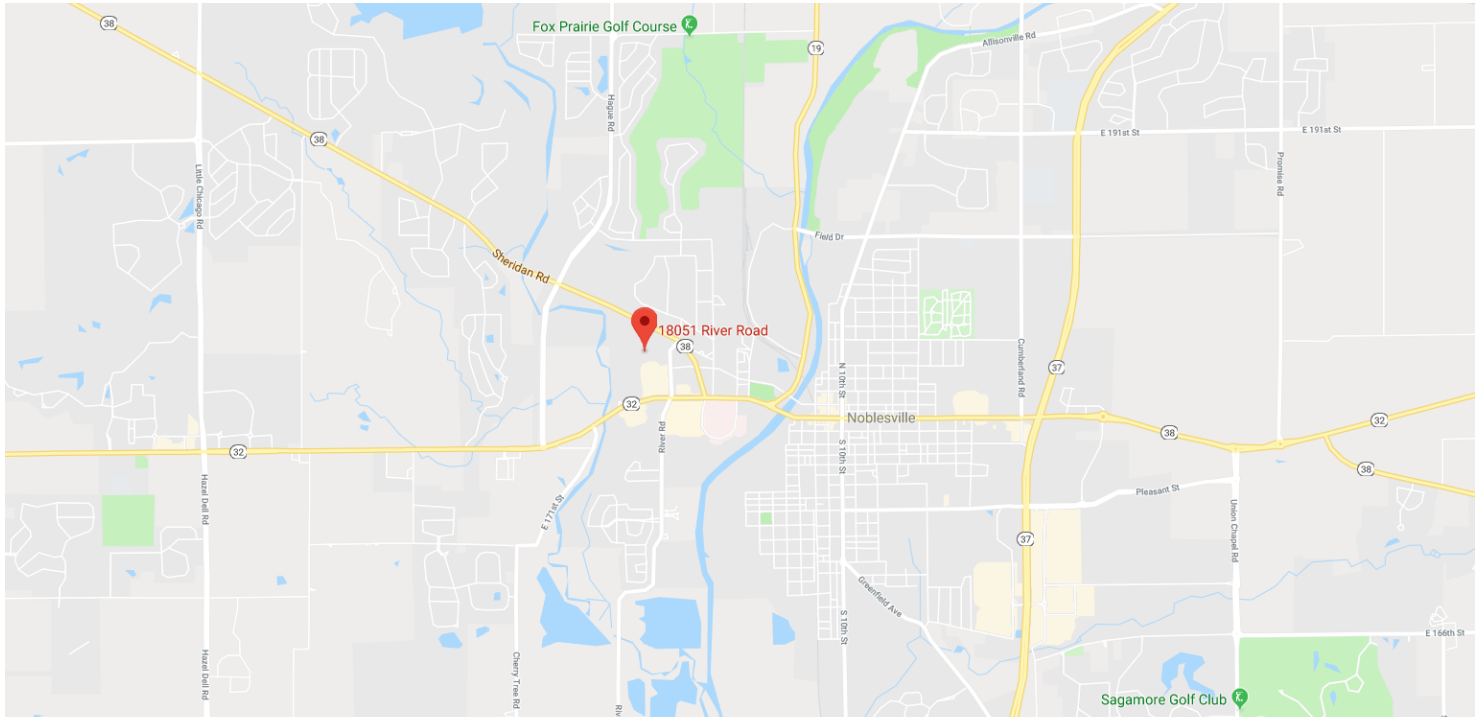
OWNED BY:

LEASED & MANAGED BY:



For more, visit: [CornerstoneCompaniesInc.com](http://CornerstoneCompaniesInc.com)

# LOCATION



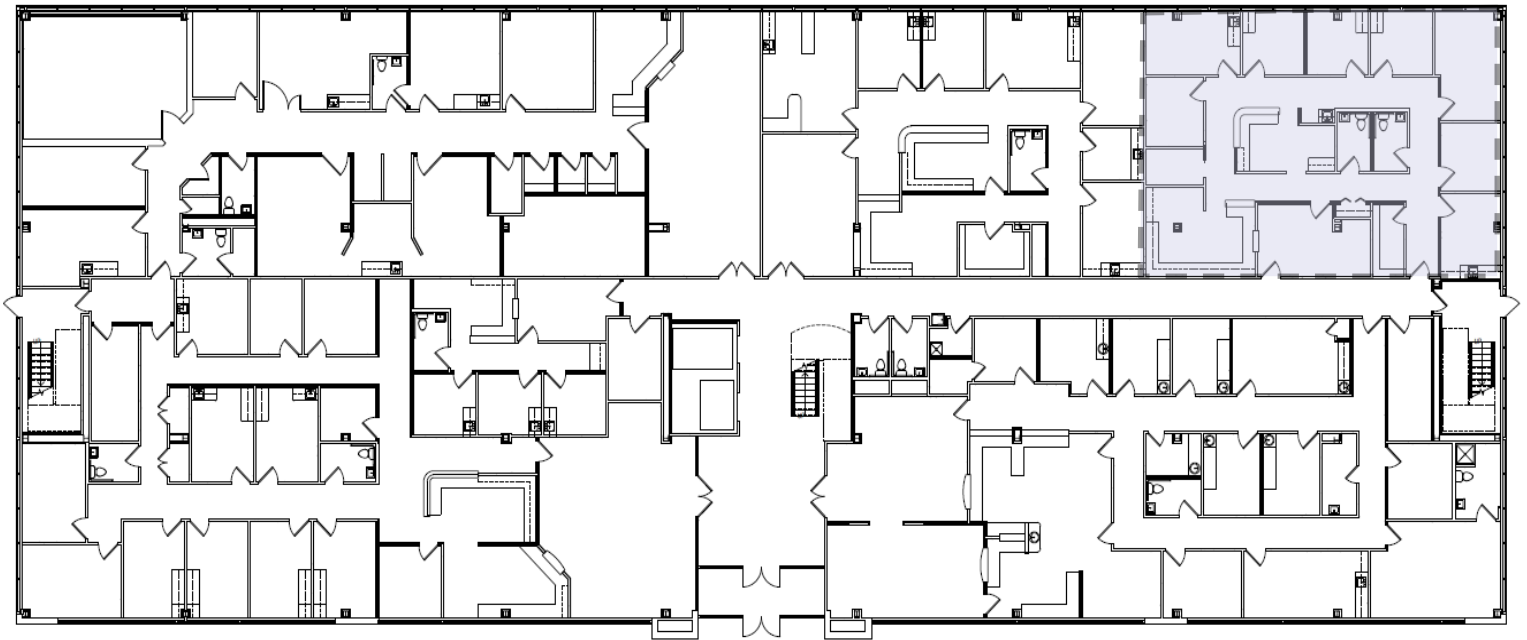
For more, visit: [CornerstoneCompaniesInc.com](http://CornerstoneCompaniesInc.com)

# FLOOR PLANS

---

## **1ST FLOOR**

SUITE 105 - 2,407 RSF  
AVAILABLE IMMEDIATELY



For more, visit: [CornerstoneCompaniesInc.com](http://CornerstoneCompaniesInc.com)



# FLOOR PLANS

---

## 2ND FLOOR



SUITE 201

1,734 RSF

AVAILABLE IMMEDIATELY



For more, visit: [CornerstoneCompaniesInc.com](http://CornerstoneCompaniesInc.com)