



FOR LEASE

PROPERTY HIGHLIGHTS:

- Building Size: 43,730 SF
- 2,431 SF for lease - 2nd gen medical office
- Premier medical office location
- Convenient access to SR 37
- Excellent visibility from 146th Street
- Adjacent to Community Health Pavilion Noblesville and approximately 5 miles from Riverview Health Hospital, St. Vincent Fishers Hospital, and IU Health Saxony Hospital
- Covered patient drop-off

RIVERVIEW MEDICAL ARTS BUILDING
14540 PRAIRIE LAKES BLVD. N
NOBLESVILLE, IN 46060

CONTACT:

Charles J. Yeo, CCIM, CPM
Senior Vice President, Brokerage
317.288.9006
CYeo@CornerstoneCompaniesInc.com

CORNERSTONE COMPANIES, INC.

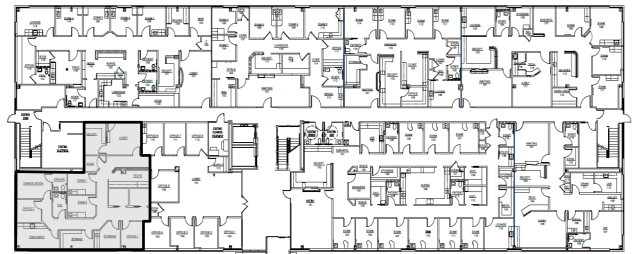
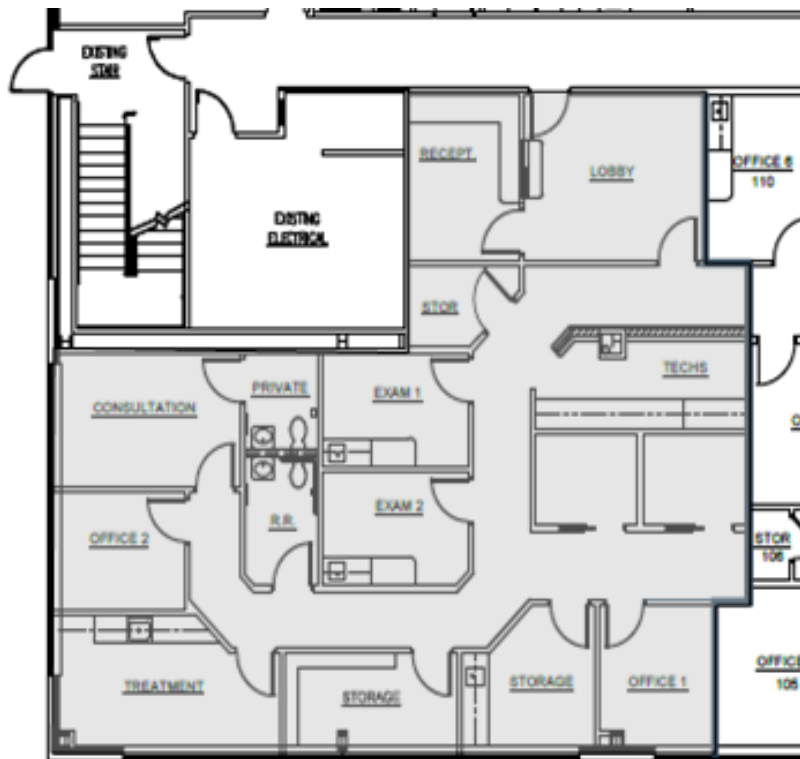
8902 N. Meridian Street, Suite 205
Indianapolis, IN 46260



FLOOR PLAN

1ST FLOOR

SUITE 101:
2,431 SF



LOCATION

