



FOR LEASE

PROPERTY HIGHLIGHTS:

- 2,334 SF available Q4 2024
- Building Size: 43,730 SF
- Located less than a half mile east of 146th Street and US 37 in Noblesville
- 5 miles from Riverview Health Hospital and St. Vincent Fishers Hospital and less than 6 miles from IU Health Saxony Hospital
- Covered patient drop-off
- Premier medical office space location

RIVERVIEW MEDICAL ARTS BUILDING
14540 PRAIRIE LAKES BLVD. N
NOBLESVILLE, IN 46060

CONTACT:

Charles J. Yeo, CCIM, CPM
Vice President
317.288.9006
CYeo@CornerstoneCompaniesInc.com

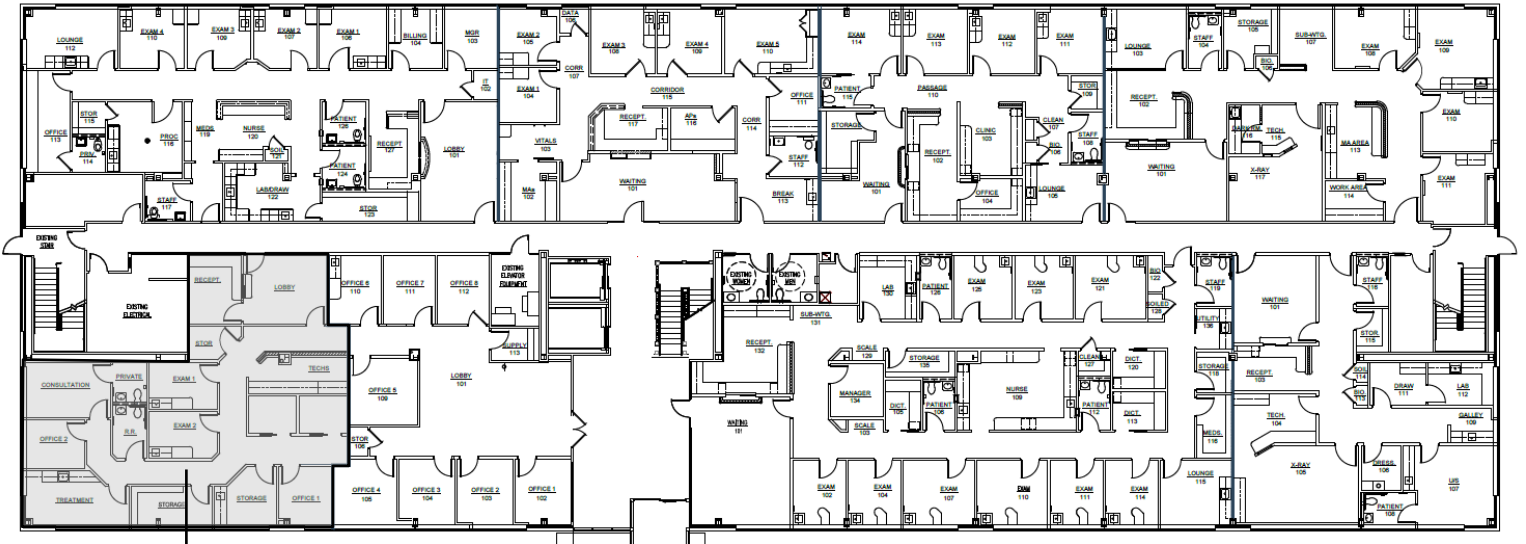
CORNERSTONE COMPANIES, INC.

8902 N. Meridian Street, Suite 205
Indianapolis, IN 46260



FLOOR PLAN

1ST FLOOR



SUITE 101:

2,334 SF

AVAILABLE Q4 2024



