



FOR LEASE

PROPERTY HIGHLIGHTS:

- Building Size: 25,750 SF
- 1,671 RSF of space available for lease.
- Located on Allisonville Road, just north of 106th Street,
- Easily accessible from I-69 in Fishers
- Less than 10 min. from Downtown Fishers.
- Located less than 10 miles from the Community Hospital Campus, IU North and St. Vincent Carmel.
- Max Contiguous Space Available: 1,671 RSF
- Min Divisible Space Available: 1,671 RSF

10995 ALLISONVILLE ROAD
FISHERS, IN

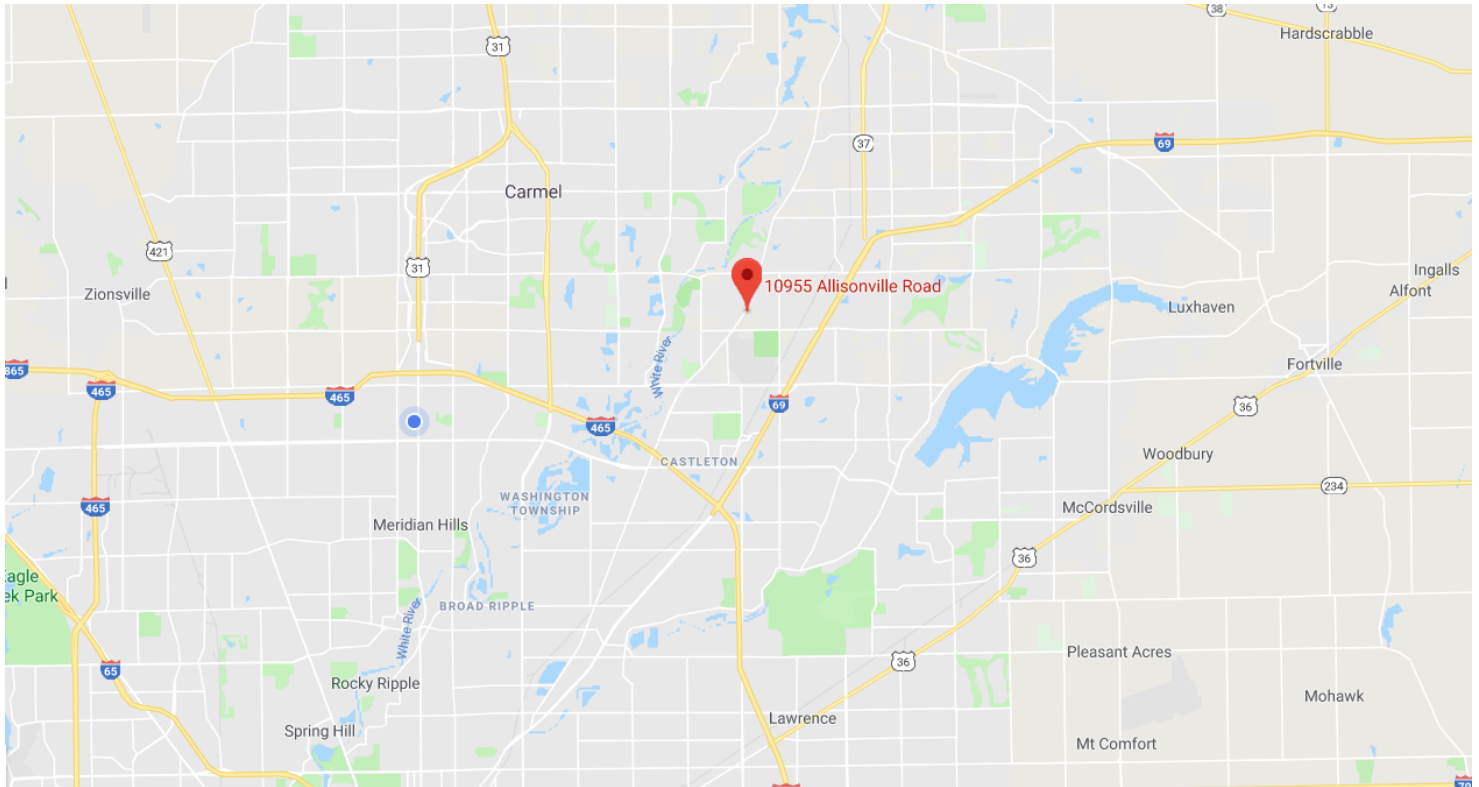
CONTACT

Ross Goyer
Senior Vice President
317.288.9011
RGoyer@cciin.com

CORNERSTONE COMPANIES, INC
8902 N. Meridian Street, Suite 205
Indianapolis, IN 46260

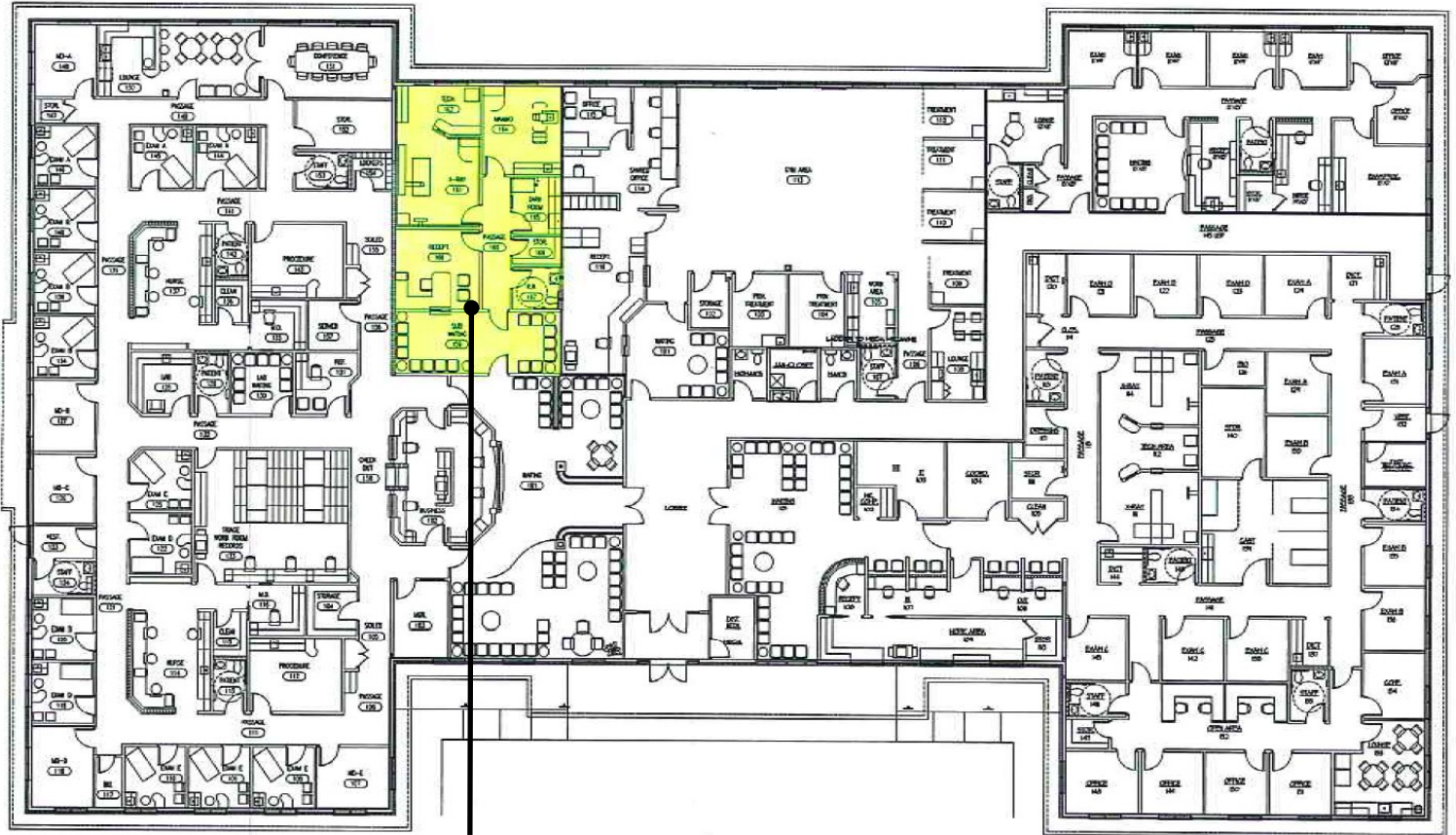


LOCATION



For more, visit: CornerstoneCompaniesInc.com

FLOOR PLANS



AVAILABLE:
SUITE 100B
1,671 RSF



For more, visit: CornerstoneCompaniesInc.com