

# FOR LEASE



 3631 N Morrison Rd. Muncie, IN



## PROPERTY HIGHLIGHTS

- 39,625 SF medical office building
- 3,544 RSF medical space for lease - 1st floor corner suite
- Approximately 1 mile from Ball State University and 3 miles from IU Health Ball Memorial Hospital
- Covered patient drop-off
- Ample parking
- Well-maintained and professionally managed building

 3631 N Morrison Rd.  
Muncie, IN 47304

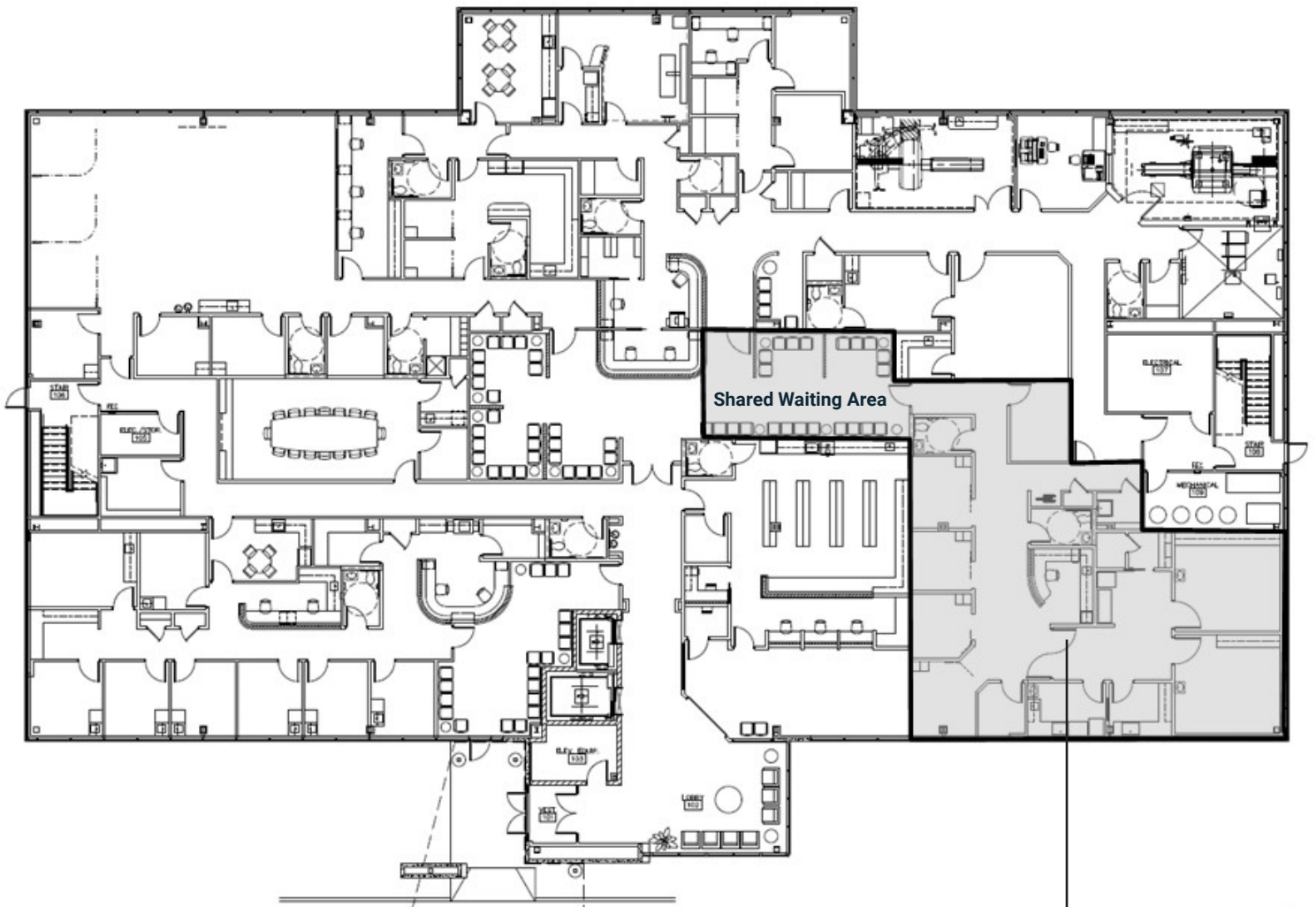
## CONTACT

**Bill McClamroch**  
Brokerage Associate  
317-919-2992  
[bmcclamroch@cciin.com](mailto:bmcclamroch@cciin.com)

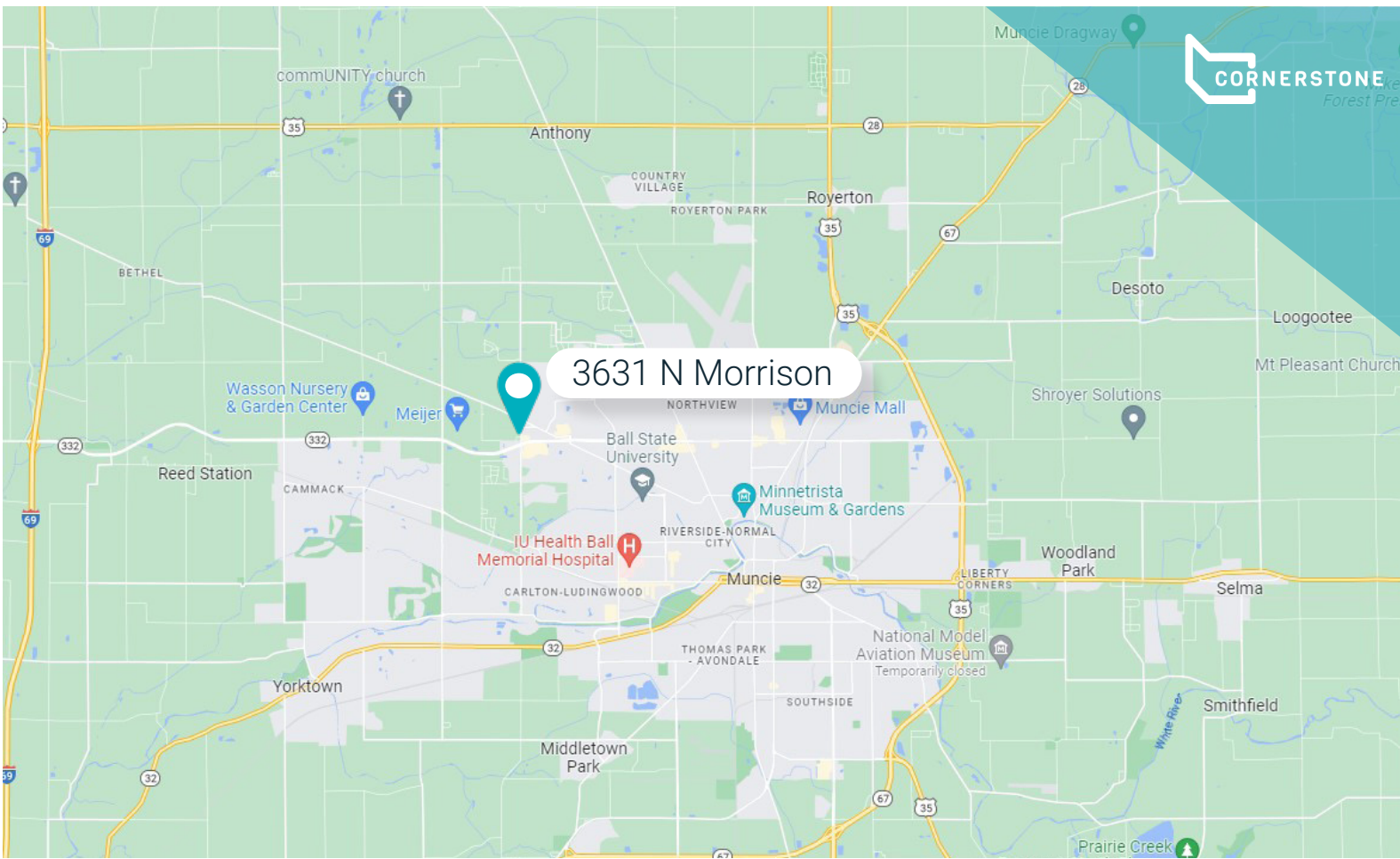
Cornerstone Companies, Inc.  
8902 N Meridian Street, Suite 205  
Indianapolis, IN 46260

# FLOOR PLAN

## 1st Floor



**Suite 106:**  
**3,544 RSF**



## DEMOGRAPHICS



73,984

Population



29,597

Households



45,324

Median Household Income



27,184

Per Capita Income



33

Median Age



## CONTACT

**Bill McClamroch**

Brokerage Associate

317-919-2992

[bmcclamroch@cciin.com](mailto:bmcclamroch@cciin.com)

Cornerstone Companies, Inc.  
8902 N Meridian Street, Suite 205  
Indianapolis, IN 46260