

FOR LEASE



 3631 N Morrison Rd. Muncie, IN



PROPERTY HIGHLIGHTS

- 39,625 SF medical office building
- 3,544 RSF medical space for lease - 1st floor corner suite
- Approximately 1 mile from Ball State University and 3 miles from IU Health Ball Memorial Hospital
- Covered patient drop-off
- Ample parking
- Well-maintained and professionally managed building

 3631 N Morrison Rd.
Muncie, IN 47304

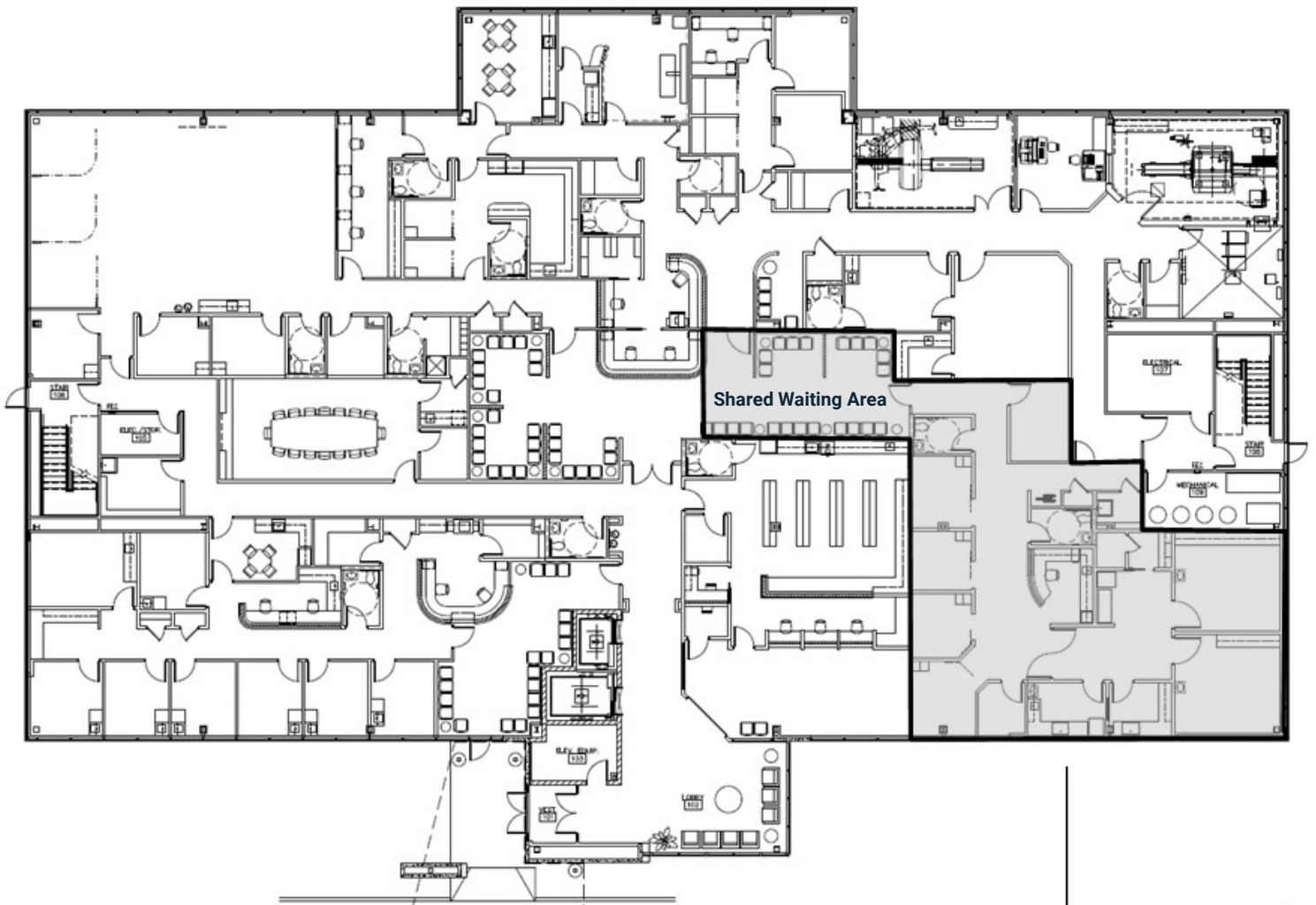
CONTACT

Bill McClamroch
Brokerage Associate
317-919-2992
bmcclamroch@cciin.com

Cornerstone Companies, Inc.
8902 N Meridian Street, Suite 205
Indianapolis, IN 46260

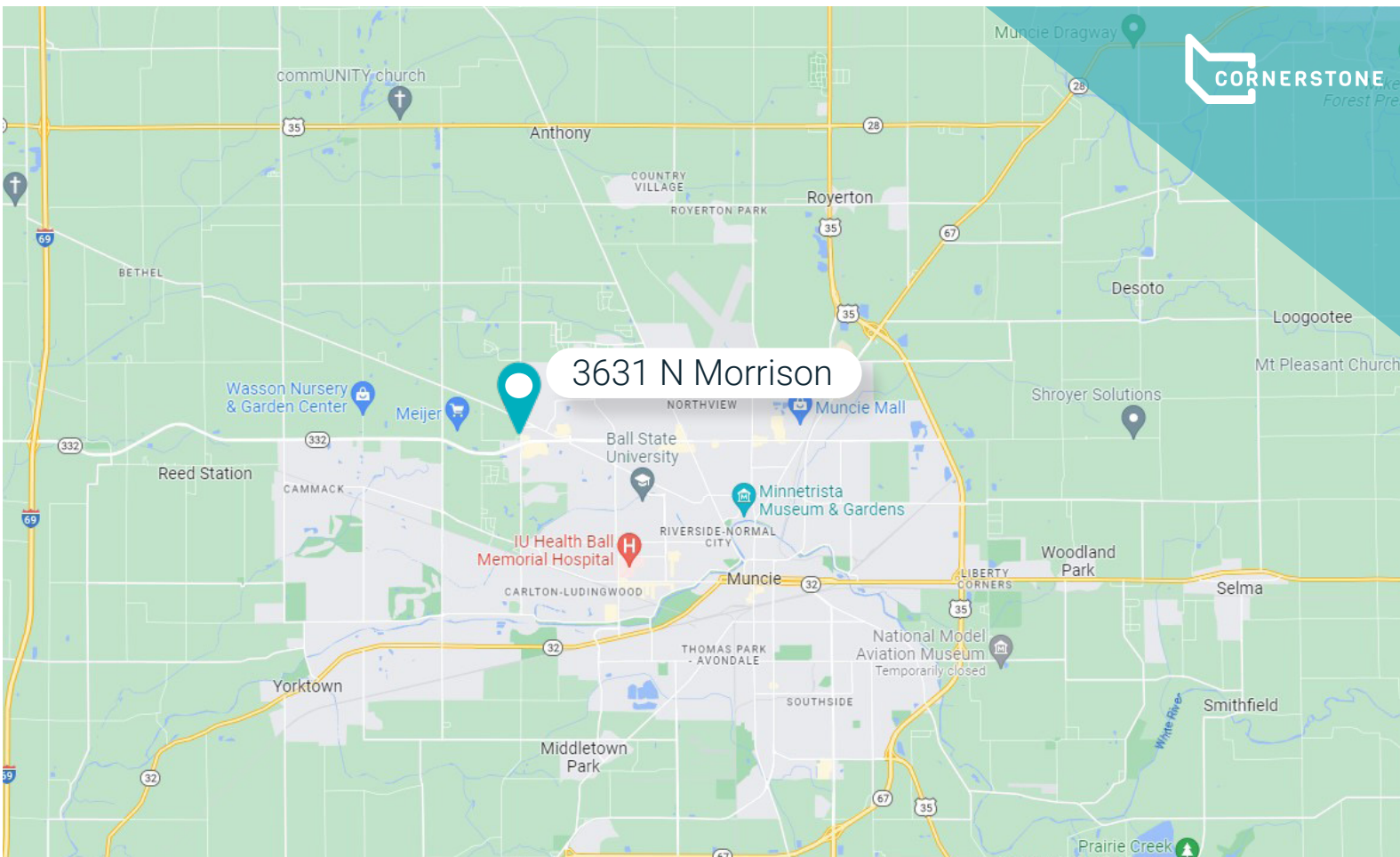
FLOOR PLAN

1st Floor



Suite 106:
3,544 RSF

[VIRTUAL TOUR](#)



DEMOGRAPHICS



73,984

Population



29,597

Households



45,324

Median Household Income



27,184

Per Capita Income



33

Median Age



CONTACT

Bill McClamroch

Brokerage Associate

317-919-2992

bmcclamroch@cciin.com

Cornerstone Companies, Inc.
8902 N Meridian Street, Suite 205
Indianapolis, IN 46260