



FOR LEASE

PROPERTY HIGHLIGHTS:

- Building Size: 27,530 SF
- Located off County Line Road, just west of US 31
- Adjacent to Community Hospital South
- Easy access to I-65 and I-465
- Ample parking available
- FREE rent based on term

SOUTHPOINTE MEDICAL OFFICE

8920 SOUTHPOINTE DRIVE
INDIANAPOLIS, IN 46277

CONTACT:

Charles J. Yeo
Vice President
317.288.9006
CYeo@cciin.com

CORNERSTONE COMPANIES, INC.

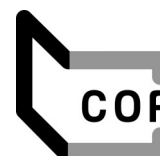
8902 N. Meridian Street, Suite 205
Indianapolis, IN 46260

NOW AVAILABLE:

SUITE D1:
3,515 RSF

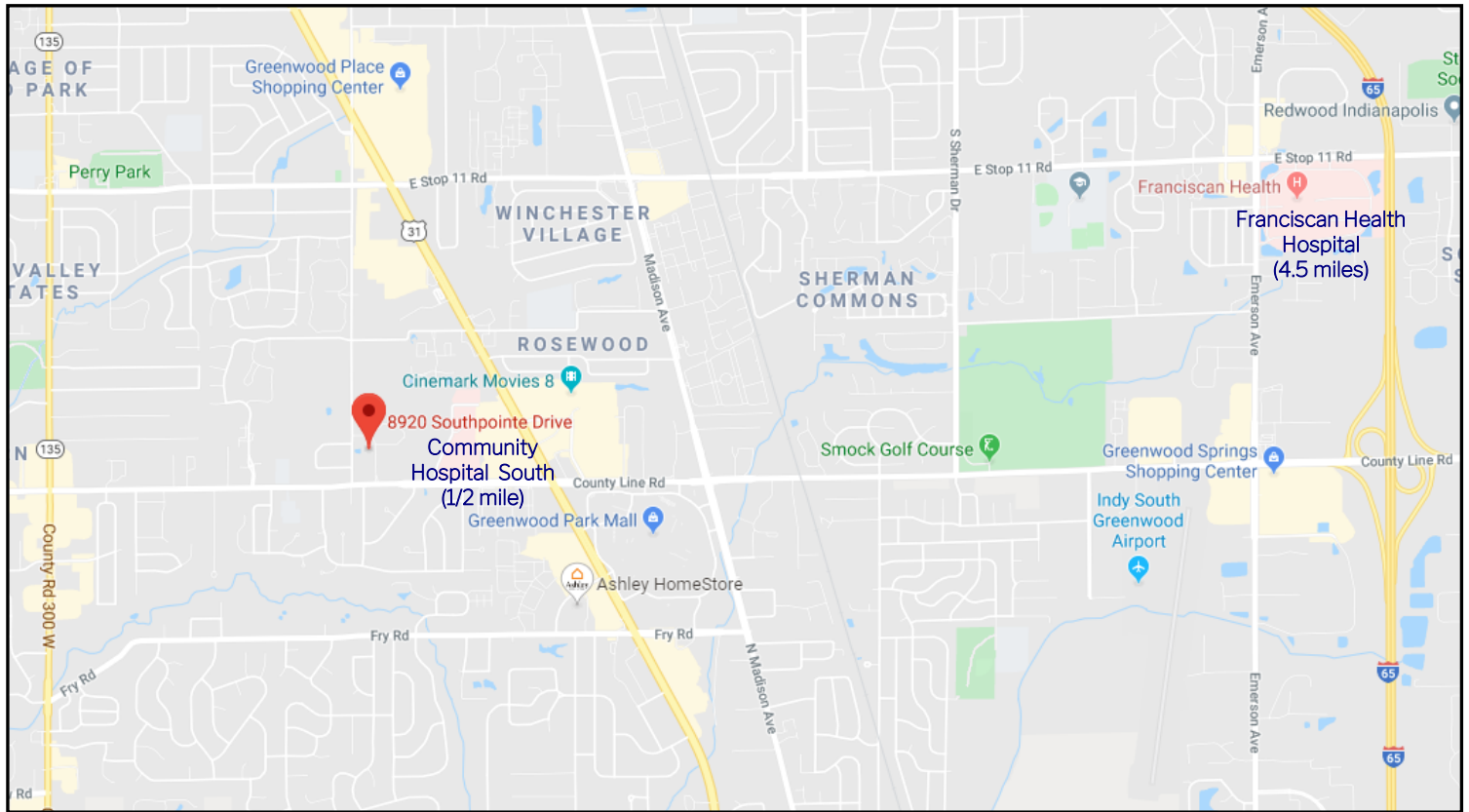


PHYSICIANS REALTY TRUST

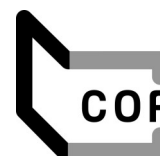


CORNERSTONE

LOCATION



PHYSICIANS REALTY TRUST

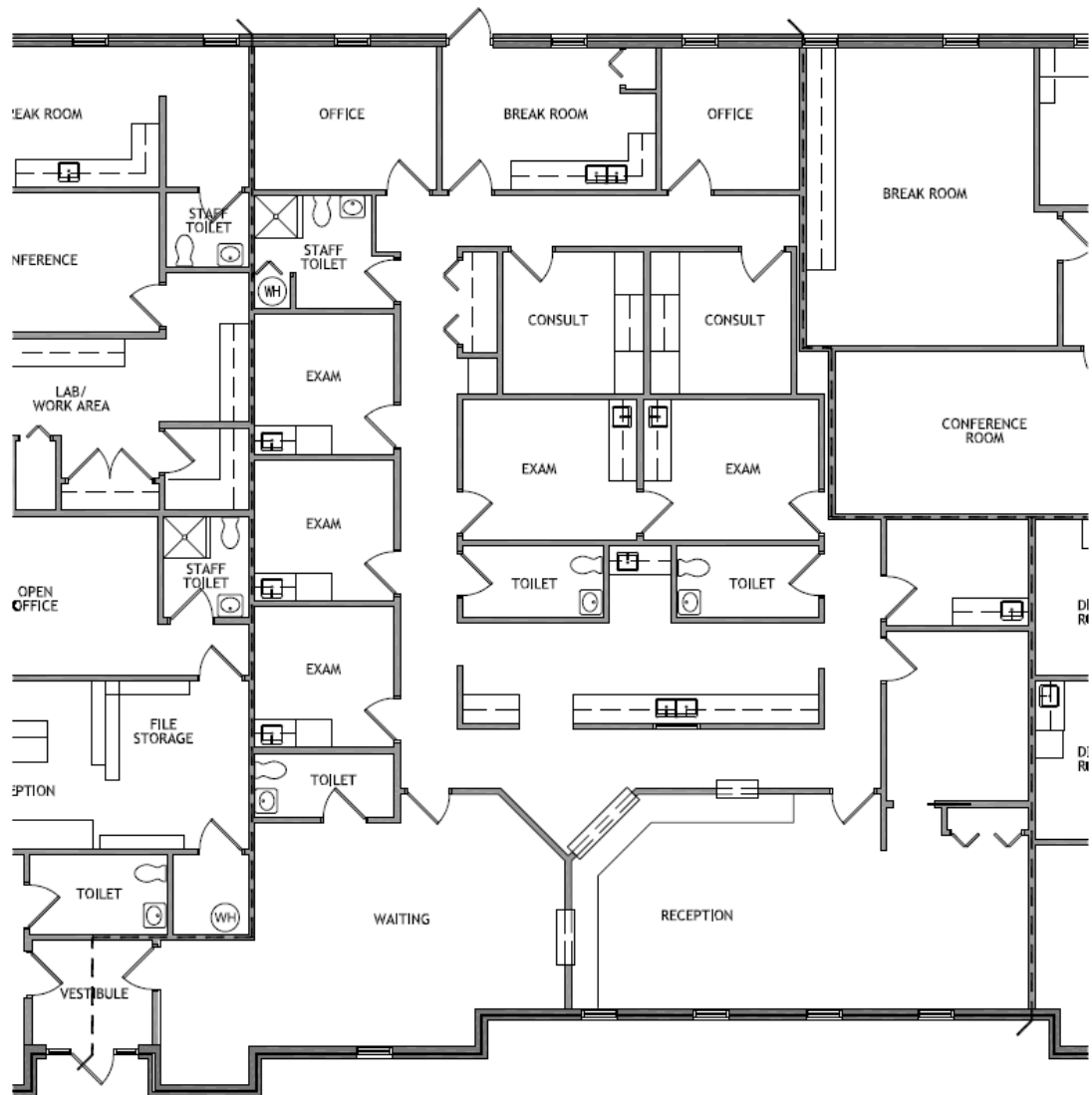


CORNERSTONE

FLOOR PLANS

SUITE D1

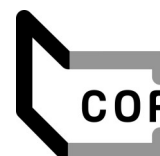
3,515 RSF



3,515 RENTABLE SF



PHYSICIANS REALTY TRUST



CORNERSTONE