

# FOR LEASE

5250 East US-36  
Avon, IN 46123

## PROPERTY DETAILS



- 14,374 RSF available for lease

- Building Size: 35,033 RSF



- Medical spec suite coming soon



- Located on US-36 with exposure to over 17,000 daily drivers



- Central to Avon, Danville, Brownsburg, and Plainfield



- Less than 4 miles from Hendricks Regional Health Main Hospital

Campus



## CONTACT

Charles J. Yeo, CCIM, CPM  
Senior Vice President, Brokerage  
317.288.9006  
[cyeo@cciin.com](mailto:cyeo@cciin.com)

HQ: Cornerstone Companies, Inc.  
8902 N Meridian Street, Suite 205  
Indianapolis, IN | 317.841.9900  
[cornerstonecompaniesinc.com](http://cornerstonecompaniesinc.com)



5250 East US-36  
Avon, IN 46123

5250 East US-36  
Avon, IN 46123

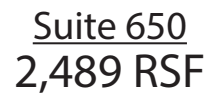


Suite 660  
2,489 RSF

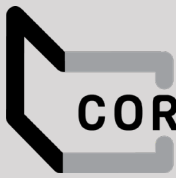
Suite 660  
2,489 RSF

Suite 670  
2,489 RSF

Suite 670  
2,489 RSF



Suite 650  
2,489 RSF



CORNERSTONE

# FLOOR PLAN

5250 East US-36

Avon, IN 46123



Suites Available

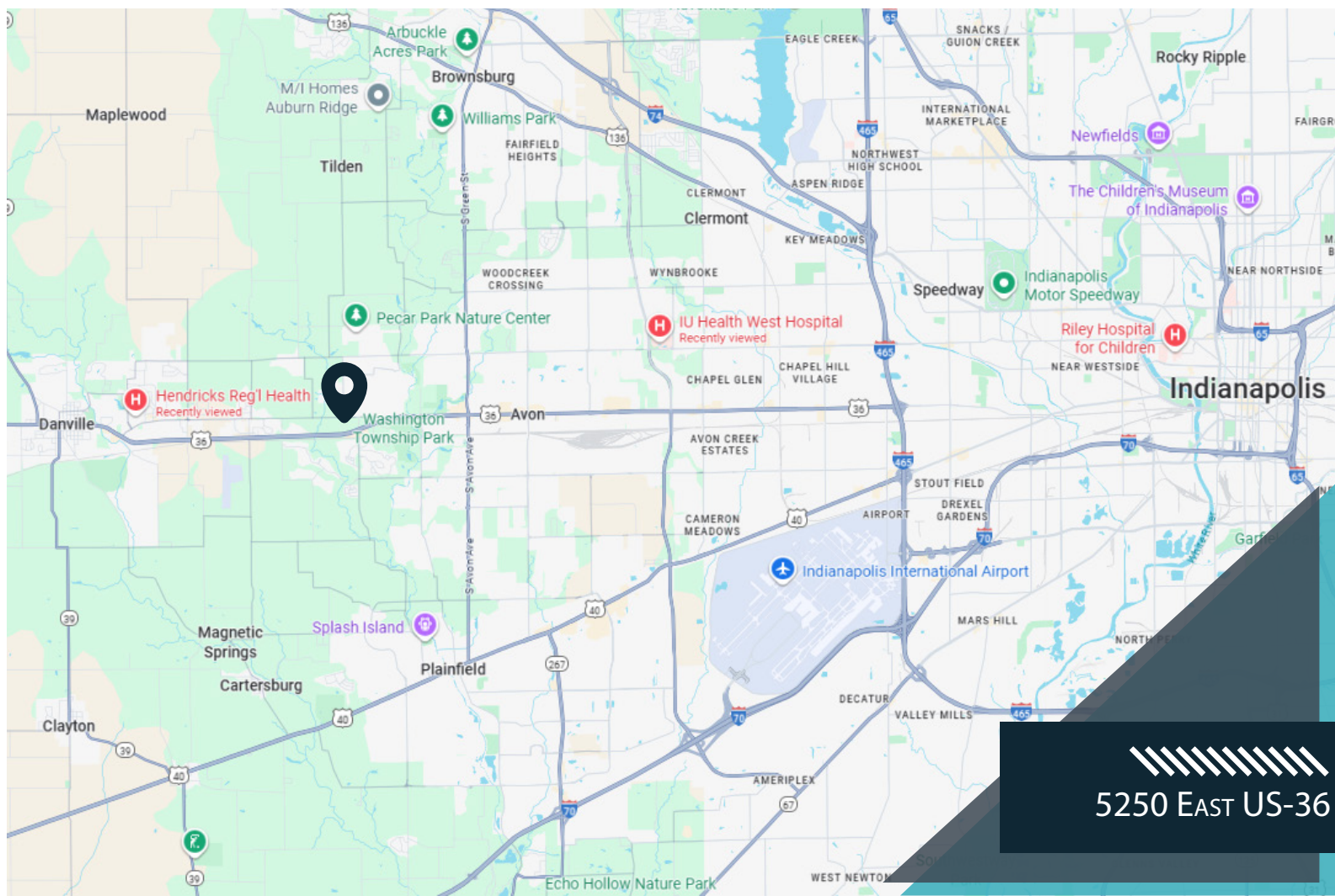
## 2nd Floor Medical Spec Suite

Suite 670A  
1,867 SF

Suite 670B  
1,852 SF







5250 EAST US-36

## DEMOGRAPHICS

(3 - mile radius)



25,620  
Population



43.2  
Median Age



9,473  
Households



\$107,374  
Median House-  
hold Income



\$127,723  
Average Household Income



CORNERSTONE



## CONTACT

Charles J. Yeo, CCIM, CPM  
Senior Vice President, Brokerage  
317.288.9006  
cyeo@cciin.com

Cornerstone Companies, Inc.  
8902 N Meridian Street, Suite 205  
Indianapolis, IN 46260